

NO. OF COPIES RECEIVED	5
DISTRIBUTION	
SANTA FE	/
FILE	/
U.S.G.S.	2
LAND OFFICE	
OPERATOR	/

NEW MEXICO OIL CONSERVATION COMMISSION

AUG 29 1977

G. C. C.
ARTESIA, OFFICE

30-015-22276

Form C-101
Revised 1-1-65

5A. Indicate Type of Lease	
STATE <input type="checkbox"/>	FEE <input checked="" type="checkbox"/>

5. State Oil & Gas Lease No.

APPLICATION FOR PERMIT TO DRILL, DEEPEN, OR PLUG BACK

1a. Type of Work		7. Unit Agreement Name	
b. Type of Well DRILL <input checked="" type="checkbox"/> DEEPEN <input type="checkbox"/> PLUG BACK <input type="checkbox"/> OIL WELL <input checked="" type="checkbox"/> GAS WELL <input type="checkbox"/> OTHER <input type="checkbox"/> SINGLE ZONE <input type="checkbox"/> MULTIPLE ZONE <input type="checkbox"/>		8. Farm or Lease Name Johnny	
2. Name of Operator Marbob Energy Corporation		9. Well No. # 1	
3. Address of Operator P O Box 304, Artesia, N. M. 88210		10. Field and Pool, or Wildcat Undes. Dayton Grayburg	
4. Location of Well UNIT LETTER O LOCATED 330 FEET FROM THE South LINE AND 1650 FEET FROM THE East LINE OF SEC. 35 T. 18 S R. 26 E N. MPM		12. County Eddy	
21. Elevations (Show whether DF, RT, etc.) 3294.3 Gr		19. Proposed Depth 1250'	19A. Formation Grayburg
21A. Kind & Status Plug, Bond statewide active		21B. Drilling Contractor Pennsylvania Drilling	20. Rotary or C.T. Rotary
22. Approx. Date Work will start 8-29-77			

PROPOSED CASING AND CEMENT PROGRAM

SIZE OF HOLE	SIZE OF CASING	WEIGHT PER FOOT	SETTING DEPTH	SACKS OF CEMENT	EST. TOP
10"	7"	20 #	700'	circulate	
6 1/2"	4 1/2"	10.5	1250'	250 sx	

We propose to drill a 10" hole to approximately 700', set 7" casing, circulate cement, reduce size of hole to 6 1/2" and drill on to top of San Andres to test Grayburg & Premier. If production is encountered will run 4 1/2" casing, circulate same. We do not anticipate the need for a blowout preventer program at this time.

APPROVAL VALID
FOR 90 DAYS UNLESS
DRILLING COMMENCED,

EXPIRES 11-29-77

IN ABOVE SPACE DESCRIBE PROPOSED PROGRAM; IF PROPOSAL IS TO DEEPEN OR PLUG BACK, GIVE DATA ON PRESENT PRODUCTIVE ZONE AND PROPOSED NEW PRODUCTIVE ZONE. GIVE BLOWOUT PREVENTER PROGRAM, IF ANY.

I hereby certify that the information above is true and complete to the best of my knowledge and belief.

Signed Secretary Hammond Title Secretary Date 8/26/77
(This space for State Use)

APPROVED BY W.A. Gressett TITLE SUPERVISOR, DISTRICT II DATE AUG 29 1977
CONDITIONS OF APPROVAL, IF ANY:

Cement must be circulated to
surface behind 7" & 4 1/2" casing

Notify N.M.O.C.C. in sufficient
time to witness cementing
the 7" casing

NEW MEXICO OIL CONSERVATION COMMISSION
WELL LOCATION AND ACREAGE DEDICATION PLAT

Form C-102
Supersedes C-128
Effective 1-1-65

All distances must be from the outer boundaries of the Section

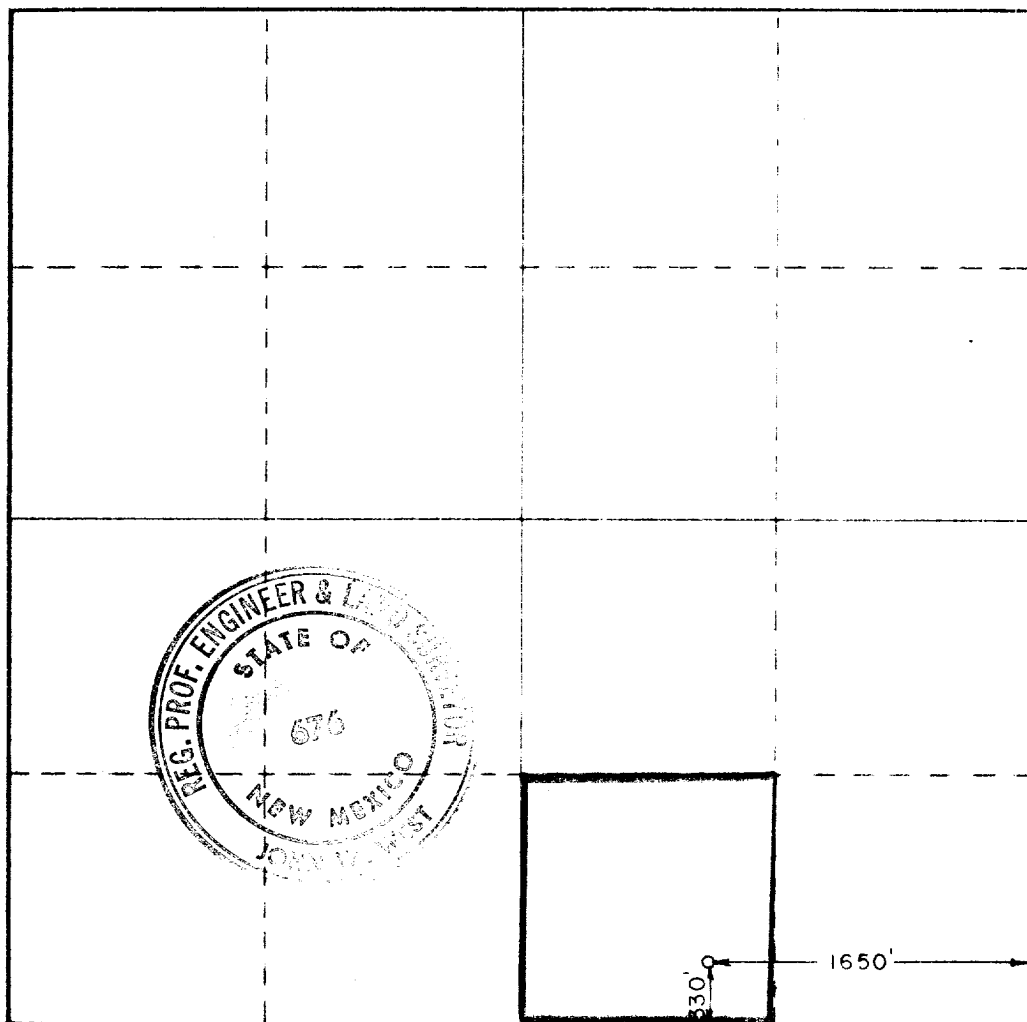
Operator MARBOB ENERGY CORP.		Lease Johnny		Well No. 1
Unit Letter O	Section 35	Township 18 S outh	Range 26 East	County Eddy
Actual Footage Location of Well: 330 feet from the South line and 1650 feet from the East line				
Ground Level Elev. 3294.3	Producing Formation Grayburg	Port Undesignated Dayton Grayburg Oil	Dedicated Acreage 40 Acres	

1. Outline the acreage dedicated to the subject well by colored pencil or hatchure marks on the plat below.
2. If more than one lease is dedicated to the well, outline each and identify the ownership thereof (both as to working interest and royalty).
3. If more than one lease of different ownership is dedicated to the well, have the interests of all owners been consolidated by communitization, unitization, force-pooling, etc?

☐ Yes ☐ No If answer is "yes," type of consolidation _____

If answer is "no," list the owners and tract descriptions which have actually been consolidated. (Use reverse side of this form if necessary.) _____

No allowable will be assigned to the well until all interests have been consolidated (by communitization, unitization, forced-pooling, or otherwise) or until a non-standard unit, eliminating such interests, has been approved by the Commission.



CERTIFICATION

I hereby certify that the information contained herein is true and complete to the best of my knowledge and belief.

Dorothy Hammond
Name

Dorothy Hammond
Position

Secretary-Treasurer
Company

Marbob Energy Corporation
Date

8-26-77

I hereby certify that the well location shown on this plat was plotted from field notes of actual surveys made by me or under my supervision, and that the same is true and correct to the best of my knowledge and belief.

Date Surveyed

August 25, 1977

Registered Professional Engineer and/or Land Surveyor

John M. West
Certificate No.

676

0 330 660 990 1320 1650 1980 2310 2640 2000 1500 1000 500 0