

NO. OF COPIES RECEIVED	5
DISTRIBUTION	
SATISFACTION	1
FILE	1 ✓
U.S.G.S.	2
LAND OFFICE	
OPERATOR	1

**RECEIVED**  
NEW MEXICO OIL CONSERVATION COMMISSION  
**SEP 1 1977**  
**O. C. C.**  
**ARTESIA, OFFICE**

30-015-22285  
Form C-101  
Revised 1-4-65

5A. Indicate Type of Lease  
STATE ☐ FEDERAL ☒  
5. State Oil & Gas Lease No.

**APPLICATION FOR PERMIT TO DRILL, DEEPEN, OR PLUG BACK**

1a. Type of Work b. Type of Well OIL WELL <input checked="" type="checkbox"/> GAS WELL <input type="checkbox"/> OTHER <input type="checkbox"/> SINGLE ZONE <input type="checkbox"/> MULTIPLE ZONE <input type="checkbox"/>		7. Unit Agreement Name <b>Ballard Grayburg</b> <b>San Andres Unit</b> 8. Farm or Lease Name <b>Tract No. 24</b>	
2. Name of Operator <b>Anadarko Production Company</b>		9. Well No. <b>3</b>	
3. Address of Operator <b>P. O. Box 67, Loco Hills, New Mexico 88255</b>		10. Field and Pool, or Wildcat <b>Loco Hills Queen</b> <b>Grayburg San Andres</b>	
4. Location of Well UNIT LETTER <b>K</b> LOCATED <b>2180</b> FEET FROM THE <b>South</b> LINE <b>2180</b> FEET FROM THE <b>West</b> LINE OF SEC. <b>5</b> TWP. <b>18S</b> RGE. <b>29E</b> NNPM		12. County <b>Eddy</b>	
19. Proposed Depth <b>2850'</b>		19A. Formation <b>Grayburg</b>	
20. Rotary or C.T. <b>Rotary</b>		21. Kind & Status Plug. Bond <b>Blanket</b>	
21A. Kind & Status Plug. Bond <b>Blanket</b>		21B. Drilling Contractor <b>W E K Drilling Co.</b>	
22. Approx. Date Work will start <b>11-15-77</b>		23. <b>3554 GR</b>	

**PROPOSED CASING AND CEMENT PROGRAM**

SIZE OF HOLE	SIZE OF CASING	WEIGHT PER FOOT	SETTING DEPTH	SACKS OF CEMENT	EST. TOP
12 1/2"	8 5/8"	24#	350'	150	100
7 7/8"	4 1/2"	10.5#	2,850	400	2,000

1. Rig up rotary tools.
2. Drill to approximately 350', set and cement 8 5/8" casing, install & test Series 900 double ram hydraulic blowout preventor.
3. Drill to T. D. 2850', set and cement 4 1/2" casing on T. D.
4. Run cased hole logs.
5. Perforate, acidize and frac Grayburg Zones.
6. Install pumping equipment and place well on production.

VALID  
FOR 90 DAYS UNLESS  
DRILLING COMMENCED,

EXPIRES 12-2-77

IN ABOVE SPACE DESCRIBE PROPOSED PROGRAM; IF PROPOSAL IS TO DEEPEN OR PLUG BACK, GIVE DATA ON PRESENT PRODUCTIVE ZONE AND PROPOSED NEW PRODUCTIVE ZONE. GIVE BLOWOUT PREVENTER PROGRAM, IF ANY.

I hereby certify that the information above is true and complete to the best of my knowledge and belief.

Original Signed by  
Signed Jerry E. Buckles Title Area Supervisor Date August 30, 1977

(This space for State Use)

APPROVED BY W. A. Gussert TITLE SUPERVISOR, DISTRICT II DATE SEP 2 1977

CONDITIONS OF APPROVAL, IF ANY:

Cement must be circulated to  
surface behind 8 5/8" casing

NEW MEXICO OIL CONSERVATION COMMISSION  
WELL LOCATION AND ACREAGE DEDICATION PLAT

Form C-102  
Supersedes C-128  
Effective 1-1-65

All distances must be from the outer boundaries of the Section

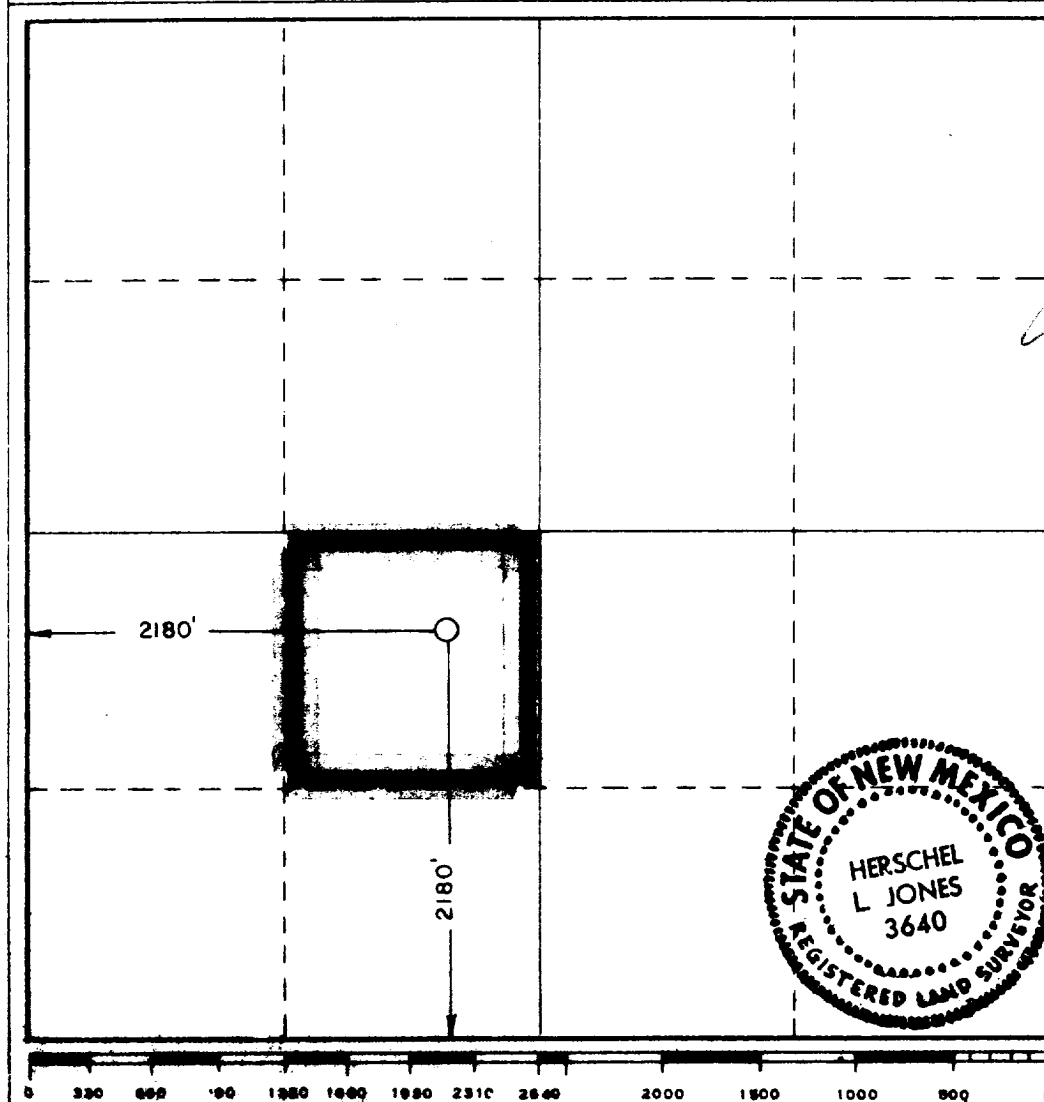
Operator <b>ANADARKO PRODUCTION COMPANY</b>		Lease <b>Ballard Grayburg San Andres 1.24</b>		Well No. <b>24-3</b>
Unit Letter <b>"K"</b>	Section <b>5</b>	Township <b>18 South</b>	Range <b>29 East</b>	County <b>Eddy</b>
Actual Footage Location of Well: <b>2180</b> feet from the <b>South</b> line and <b>2180</b> feet from the <b>West</b> line				
Ground Level Elev. <b>3554.6R</b>	Producing Formation <b>Grayburg</b>	Pool <b>Loco Hills Queen G.S.A.</b>	Dedicated Acreage: <b>40</b> Acres	

1. Outline the acreage dedicated to the subject well by colored pencil or hatchure marks on the plat below.
2. If more than one lease is dedicated to the well, outline each and identify the ownership thereof (both as to working interest and royalty).
3. If more than one lease of different ownership is dedicated to the well, have the interests of all owners been consolidated by communitization, unitization, force-pooling, etc?

☐ Yes ☐ No If answer is "yes," type of consolidation \_\_\_\_\_

If answer is "no," list the owners and tract descriptions which have actually been consolidated. (Use reverse side of this form if necessary.) \_\_\_\_\_

No allowable will be assigned to the well until all interests have been consolidated (by communitization, unitization, forced-pooling, or otherwise) or until a non-standard unit, eliminating such interests, has been approved by the Commission.



CERTIFICATION

I hereby certify that the information contained herein is true and complete to the best of my knowledge and belief.

Name  
*[Signature]*  
**Area Supervisor**  
Position  
**Anadarko Production Company**  
Company  
**August 30, 1977**  
Date

I hereby certify that the well location shown on this plat was plotted from field notes of actual surveys made by me or under my supervision, and that the same is true and correct to the best of my knowledge and belief.

Date Surveyed  
**August 19, 1977**  
Registered Professional Engineer and/or Land Surveyor

*[Signature]*  
Certificate No.  
**3640**