

NO. OF COPIES RECEIVED	
DISTRIBUTION	
SANTA FE	
FILE	
U.S.G.S.	
LAND OFFICE	
OPERATOR	

NEW MEXICO OIL CONSERVATION COMMISSION

RECEIVED

SEP 9 1977

O. C. C.

ARTESIA OFFICE

APPLICATION FOR PERMIT TO DRILL, DEEPEN, OR PLUG BACK

1a. Type of Work		7. Unit Agreement Name	
b. Type of Well DRILL <input checked="" type="checkbox"/> DEEPEN <input type="checkbox"/> PLUG BACK <input type="checkbox"/> OIL WELL <input checked="" type="checkbox"/> GAS WELL <input type="checkbox"/> OTHER <input type="checkbox"/> SINGLE ZONE <input type="checkbox"/> MULTIPLE ZONE <input type="checkbox"/>		8. Form or Lease Name Nickson "BM"	
2. Name of Operator Yates Petroleum Corporation		9. Well No. 4	
3. Address of Operator 207 South 4th Street - Artesia, NM 88210		10. Field and Pool, or Wildcat Penasco Draw (S.A. Yes)	
4. Location of Well UNIT LETTER L LOCATED 1650 FEET FROM THE South LINE AND 330 FEET FROM THE West LINE OF SEC. 30 T2N. 18S R6E 26E		17. County Eddy	
21. Elevations (Show whether DT, K, etc.) 3445' GR		21A. Kind & Status Plug, Bond Blanket	
21B. Drilling Contractor Verna Drilling Company		22. Approx. Date Work will start As soon as approved	

PROPOSED CASING AND CEMENT PROGRAM

SIZE OF HOLE	SIZE OF CASING	WEIGHT PER FOOT	SETTING DEPTH	SACKS OF CEMENT	EST. TOP
15"	10-3/4"	32#	Approx 500'	250 sx - Circulate	
9 1/2"	7"	20#	" 1150'	450 sx - Circulate	
6 1/4"	4 1/2 & 5 1/2" (taper)	29.5 & 14#	" 1150' 1550'	135 sacks - Circulate	

Propose to drill a San Andres Test to 1550' with approximately 500 feet of surface casing to shut off gravel and cavings, intermediate casing will be set 100 feet below the Artesian Water zone, a tapered production string will be run, if productive, perforated and stimulated as needed.

Mud Program: - FW gel w/Lcm to 1100'. FW to TD.

BOP Program: - BOP's will be installed on intermediate casing and tested for operational.

APPROVAL VALID  
FOR 90 DAYS UNLESS  
DRILLING COMMENCED,

EXPIRES 12-12-77

IN ABOVE SPACE DESCRIBE PROPOSED PROGRAM IF PROPOSAL IS TO DEEPEN OR PLUG BACK, GIVE DATA ON PRESENT PRODUCTIVE ZONE AND PROPOSED NEW PRODUCTIVE ZONE. GIVE BLOWOUT PREVENTER PROGRAM, IF ANY.

I hereby certify that the information above is true and complete to the best of my knowledge and belief.

Signed Christie Johnson Title Geol. Secty Date 9-8-77

(This space for State Use)

APPROVED BY W.A. Gressett TITLE SUPERVISOR, DISTRICT II DATE SEP 12 1977

CONDITIONS OF APPROVAL, IF ANY:

Cement must be circulated to surface behind 10 3/4" & 7" casing

Notify N.M.O.C.C. in sufficient time to witness cementing the 7" casing

NE EXICO OIL CONSERVATION COMMISSION  
WELL LOCATION AND ACREAGE DEDICATION PLAT

Form C-102  
Supersedes C-128  
Effective 1-1-65

All distances must be from the outer boundaries of the Section.

Operator <b>YATES PETROLEUM CORPORATION</b>			Lease <b>Nickson BM</b>		Well No. <b>#4</b>
Unit Letter <b>L</b>	Section <b>30</b>	Township <b>18South</b>	Range <b>26 East</b>	County <b>Eddy</b>	

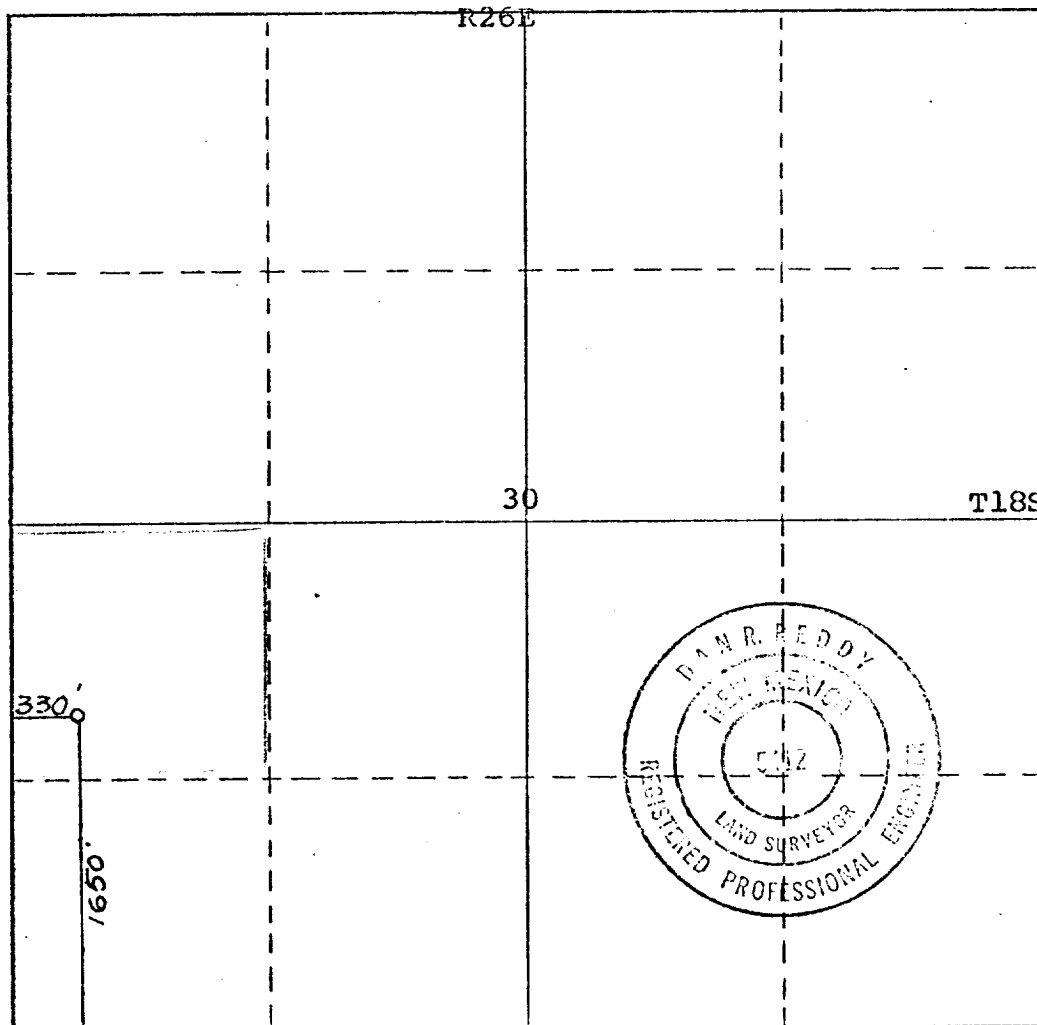
Actual Footage Location of Well: <b>1650'</b> feet from the <b>South</b> line and <b>330'</b> feet from the <b>West</b> line					
Ground Level Elev. <b>3445'</b>	Producing Formation <b>San Andres</b>	Pool <b>Penasco Draw SA, Yeso</b>	Dedicated Acreage: <b>38.93</b> <del>40</del> Acres		

1. Outline the acreage dedicated to the subject well by colored pencil or hatchure marks on the plat below.
2. If more than one lease is dedicated to the well, outline each and identify the ownership thereof (both as to working interest and royalty).
3. If more than one lease of different ownership is dedicated to the well, have the interests of all owners been consolidated by communitization, unitization, force-pooling, etc?

☐ Yes ☐ No If answer is "yes," type of consolidation \_\_\_\_\_

If answer is "no," list the owners and tract descriptions which have actually been consolidated. (Use reverse side of this form if necessary.) \_\_\_\_\_

No allowable will be assigned to the well until all interests have been consolidated (by communitization, unitization, forced-pooling, or otherwise) or until a non-standard unit, eliminating such interests, has been approved by the Commission.



CERTIFICATION

I hereby certify that the information contained herein is true and complete to the best of my knowledge and belief.

*Eddie M. Mahfood*

Name  
**Eddie M. Mahfood**

Position  
**Engineer**

Company  
**Yates Petroleum Corp.**

Date  
**9-8-77**

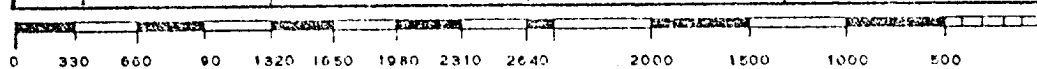
I hereby certify that the well location shown on this plat was plotted from field notes of actual surveys made by me or under my supervision, and that the same is true and correct to the best of my knowledge and belief.

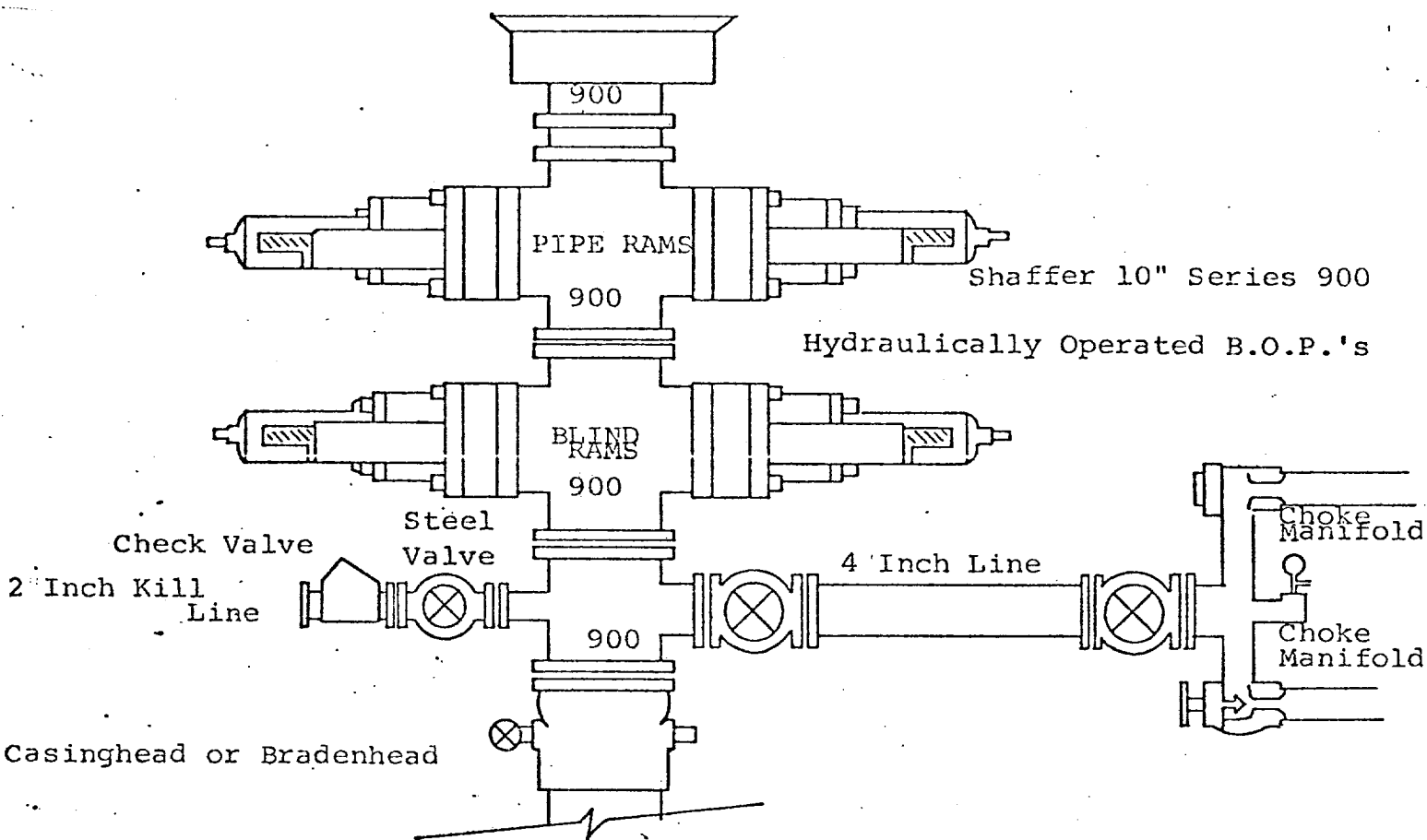
Date Surveyed  
**9/7/77**

Registered Professional Engineer and/or Land Surveyor

*Dan R. Reddy*

Certificate No.  
**5412 N.M.P.E.&L.S.**





THE FOLLOWING CONSTITUTE MINIMUM BLOWOUT PREVENTER REQUIREMENTS

1. All preventers to be hydraulically operated with secondary manual controls installed prior to drilling out from under casing.
2. Choke outlet to be a minimum of 4" diameter.
3. Kill line to be of all steel construction of 2" minimum diameter.
4. All connections from operating manifolds to preventers to be all steel, hole or tube a minimum of one inch in diameter.
5. The available closing pressure shall be at least 15% in excess of that required with sufficient volume to operate the B.O.P.'s.
6. All connections to and from preventer to have a pressure rating equivalent to that of the B.O.P.'s.
7. Inside blowout preventer to be available on rig floor.
8. Operating controls located a safe distance from the rig floor.
9. Hole must be kept filled on trips below intermediate casing. Operator not responsible for blowouts resulting from not keeping hole full.
10. D. P. float must be installed and used below zone of first gas intrusion.