

UNITED STATES
DEPARTMENT OF THE INTERIOR
GEOLOGICAL SURVEY

APPLICATION FOR PERMIT TO DRILL, DEEPEN, OR PLUG BACK

1a. TYPE OF WORK

DRILL ☒DEEPEN ☐PLUG BACK ☐

b. TYPE OF WELL

OIL
WELL ☐GAS
WELL ☒

OTHER

SINGLE
ZONE ☒MULTIPLE
ZONE ☐

2. NAME OF OPERATOR

Amoco Production Company

3. ADDRESS OF OPERATOR

P. O. Drawer A, Levelland, TX 79336

4. LOCATION OF WELL (Report location clearly and in accordance with any State requirements.)

At surface

1650' FEL x 1980' FNL Sec 3, (Unit G, SW/4, NE/4)

At proposed prod. zone

14. DISTANCE IN MILES AND DIRECTION FROM NEAREST TOWN OR POST OFFICE*

Approximately 11 Miles Southeast of Artesia, N.M.

16. DISTANCE FROM PROPOSED*

LOCATION TO NEAREST
PROPERTY OR LEASE LINE, FT.
(Also to nearest drlg. unit line, if any)

18. DISTANCE FROM PROPOSED LOCATION*

TO NEAREST WELL, DRILLING, COMPLETED,
OR APPLIED FOR, ON THIS LEASE, FT.

21. ELEVATIONS (Show whether DF, RT, GR, etc.)

3560.1 GR

23.

PROPOSED CASING AND CEMENTING PROGRAM

SIZE OF HOLE	SIZE OF CASING	WEIGHT PER FOOT	SETTING DEPTH	QUANTITY OF CEMENT
12½-11"	8 5/8"	24#	1800'	Circ to Surface
7 7/8"	5 ½"	14-15.5#	9400'	Sufficient to tie back into surface pipe.

After drilling, run logs and evaluate. Perforate and stimulate as necessary to attempt commercial production.

Mud Program: O- SCP Water & Native Mud
SCP- TD Brine & Native Mud

Gas is not committed

BOP Program attached.

Archaeological Reconnaissance attached.

IN ABOVE SPACE DESCRIBE PROPOSED PROGRAM: If proposal is to deepen or plug back, give data on present productive zone and proposed new productive zone. If proposal is to drill or deepen directionally, give pertinent data on subsurface locations and measured and true vertical depths. Give blowout preventer program, if any.

24.

SIGNED

Randy Atkins

TITLE

Staff Assistant (SG)

DATE

10-10-77

(This space for Federal or State office use)

PERMIT NO.

APPROVAL DATE

NOV 3 1977

APPROVED BY

Joe D. Lara

TITLE

ACTING DISTRICT ENGINEER

DATE

NOV 3 - 1977

CONDITIONS OF APPROVAL, IF ANY:

THIS APPROVAL IS RESCINDED IF OPERATIONS

ARE NOT COMMENCED WITHIN 3 MONTHS.

EXPIRES

FEB 3 - 1978

*See Instructions On Reverse Side

30-015-22342

5. LEASE DESIGNATION AND SERIAL NO.

LC 065478-b

6. IF INDIAN, ALLOTTEE OR TRIBE NAME

7. UNIT AGREEMENT NAME

8. FARM OR LEASE NAME

Amoco Fed "F" Gas Com

9. WELL NO.

1

10. FIELD AND POOL, OR WILDCAT

Scoggin Draw

11. SEC., T., R., M., OR BLK.
AND SURVEY OR AREA

3-18-27

12. COUNTY OR PARISH

Eddy

13. STATE

N.M.

17. NO. OF ACRES ASSIGNED
TO THIS WELL

320

20. ROTARY OR CABLE TOOLS

Rotary

22. APPROX. DATE WORK WILL START*

RECEIVED

OCT 17 1977

U.S. GEOLOGICAL SURVEY
ARTESIA, NEW MEXICO

NEW MEXICO OIL CONSERVATION COMMISSION
WELL LOCATION AND ACREAGE DEDICATION - LAT

Form C-122
Supersedes C-128
Effective 1-1-65

AMENDED PLAT

All distances must be from the outer boundaries of the Section

Lessee AMOCO Production Company			Lease AMOCO Fed. "F" Gas Com.			Well No. 1		
Section G	Section 3	Range 18 South	Range 27 East	County Eddy				

Acreage for the Location of Well: 1980		feet from the North line and		1650		feet from the East line	
Ground Level Elev. 3560.1	Producing Formation MORROW		Point SCOGGIN DRAW		Dedicated Acreage: 320		

- Outline the acreage dedicated to the subject well by colored pencil or hachure marks on the plat below.
- If more than one lease is dedicated to the well, outline and identify the ownership thereof (both as to working interest and royalty).
- If more than one lease of different ownership is dedicated to the well, have the interests of all owners been consolidated by communitization, unitization, force-pooling, etc?

☐ Yes ☐ No

If answer is "yes," type of consolidation

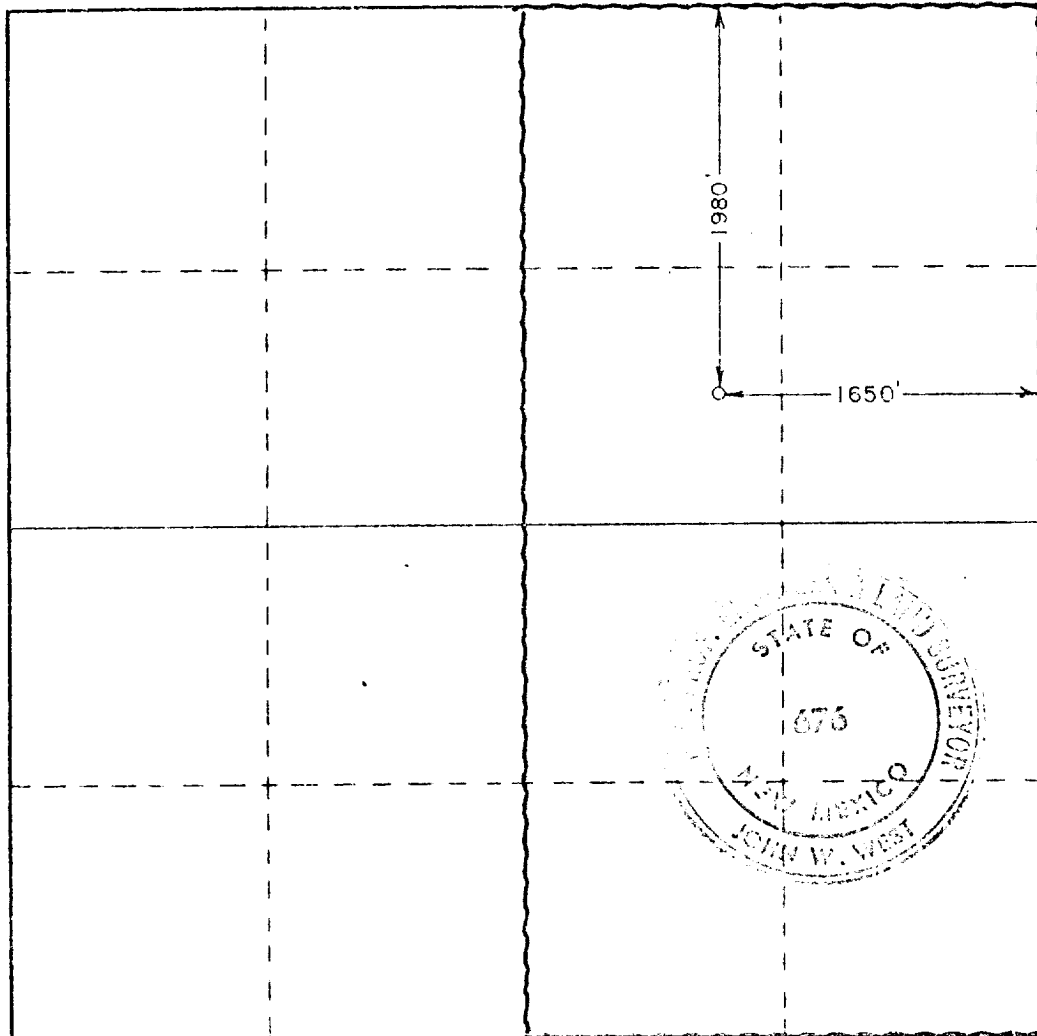
O. C. C.

ARTESIA OFFICE

U.S. GEOLOGICAL SURVEY
ARTESIA, NEW MEXICO

If answer is "no," list the owners and tract descriptions which have actually been consolidated. (Use reverse side of this form if necessary.)

No allowable will be assigned to the well until all interests have been consolidated (by communitization, unitization, forced-pooling, or otherwise) or until a non-standard unit, eliminating such interests, has been approved by the Commission.



CERTIFICATION

I hereby certify that the information contained herein is true and complete to the best of my knowledge and belief.

Name **Ray W. Cox**
Position **Administrative Assistant**
Company **AMOCO PRODUCTION COMPANY**
Date **11-9-77**

I hereby certify that the well location shown on this plat was plotted from field notes of actual surveys made by me or under my supervision, and that the same is true and correct to the best of my knowledge and belief.

Date Surveyed
September 15, 1977
Registered Professional Engineer and Land Surveyor

Charles West

Certificate No. **676**

AMENDED PLAT

NEW MEXICO OIL CONSERVATION COMMISSION
WELL LOCATION AND ACREAGE DEDICATION PLAT

Form C-102
Supersedes C-128
Effective 1-1-65

All distances must be from the outer boundaries of the Section

Operator AMOCO Production Company			Lease AMOCO Fed. "F" Gas Com.			Well No. 1		
Tract Letter G	Section 3	Township 18 South	Range 27 East	County Eddy				
Actual Well Location of Well:								
1980		feet from the North line and		1650		feet from the East line		
Ground Level Elev. 3560.1	Producing Formation MORROW		Pool SCOGGIN DRAW			Dedicated Acreage: 320		Acres

- Outline the acreage dedicated to the subject well by colored pencil or hachure marks on the plat below.
- If more than one lease is dedicated to the well, outline each and identify the ownership thereof (both as to working interest and royalty).
- If more than one lease of different ownership is dedicated to the well, have the interests of all owners been consolidated by communitization, unitization, force-pooling, etc?

RECEIVED

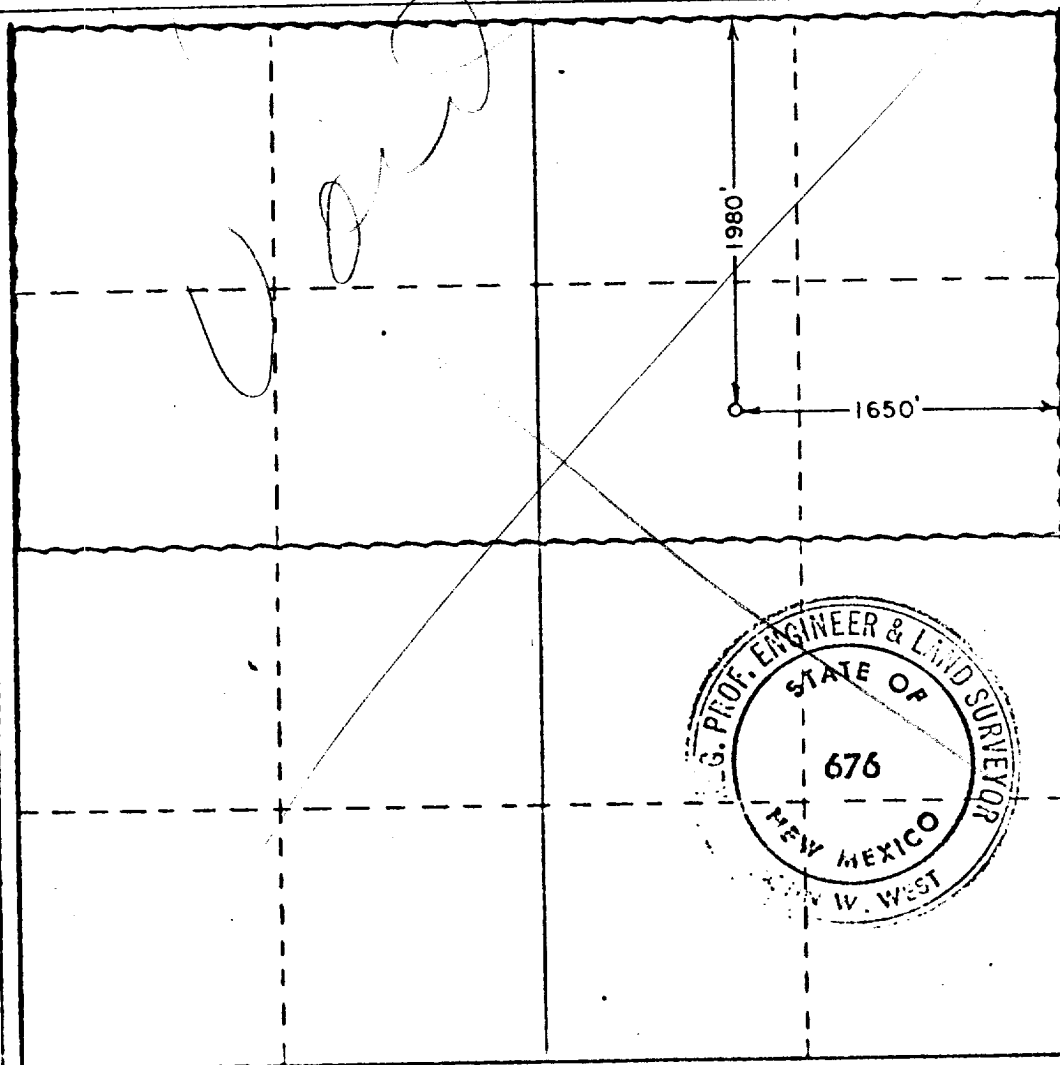
OCT 17 1977

**U.S. GEOLOGICAL SURVEY
ARTESIA, NEW MEXICO**

☐ Yes ☐ No If answer is "yes," type of consolidation _____

If answer is "no," list the owners and tract descriptions which have actually been consolidated. (Use reverse side of this form if necessary.) _____

No allowable will be assigned to the well until all interests have been consolidated (by communitization, unitization, forced-pooling, or otherwise) or until a non-standard unit, eliminating such interests, has been approved by the Commission.



CERTIFICATION

I hereby certify that the information contained herein is true and complete to the best of my knowledge and belief.

Name **Ray W. Cox**
Position **Administrative Assistant**

Company **AMOCO PRODUCTION COMPANY**

Date **9-30-77**

I hereby certify that the well location shown on this plat was plotted from field notes of actual surveys made by me or under my supervision, and that the same is true and correct to the best of my knowledge and belief.

Date Surveyed **September 15, 1977**

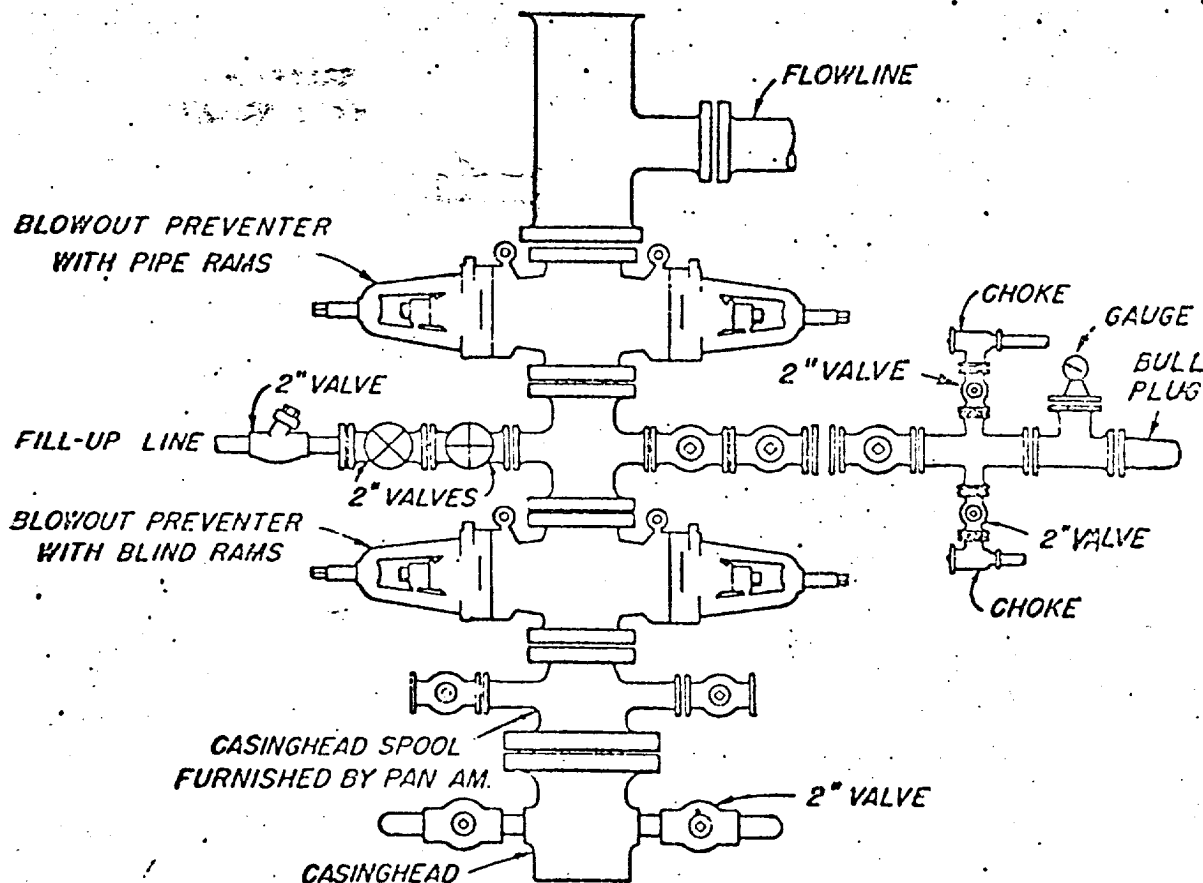
Registered Professional Engineer and/or Land Surveyor

[Signature]
Certificate No. **676**

ATTACHMENT "B"
NOTES

1. Blow-out preventers and master valve to be fluid operated and all fittings must be in good condition, 3,000# W.P. (6,000 p.s.i. test), minimum.
2. Equipment through which bit must pass shall be as large as the inside diameter of the casing that is being drilled through.
3. Nipple above blow-out preventer shall be same size as casing being drilled through.
4. Kelly cock required, 3,000# W.P. (6,000 p.s.i. test), minimum.
5. OMSCO or comparable safety valve must be available on rig floor at all times with proper connection or sub, 3,000# W.P. (6,000 p.s.i. test), minimum.
6. Blow-out preventers and master valve while drilling intermediate hole to 6,000' may be 2,000# W.P. (4,000 p.s.i. test), minimum.
7. Choke assembly, beyond second valve from cross, may be positioned (Optional) outside of derrick foundation.
8. Spool or cross may be eliminated if connections are available in the lower part of the blow-out preventer body.
9. Plug valves - gate valves are optional. Valves shown as 2" are minimum size.
10. Casing head and casing head spool, including attached valves, to be furnished by Pan American.
11. Rams in preventers will be installed as follows:

When drilling, use:	When running casing, use:
Top Preventer - Drill pipe rams	Top Preventer - Casing rams
Bottom Preventer - Blind rams or master valve	Bottom Preventer - Blind rams or master valve.



BLOWOUT PREVENTER HOOK-UP
PAN AMERICAN PETROLEUM CORP.

EXHIBIT D-1 MODIFIED

JUNE 1, 1962