

N MEXICO OIL CONSERVATION COMMISS
WELL LOCATION AND ACREAGE DEDICATION PLAT

Form C-102
 Supersedes C-128
 Effective 1-1-65

All distances must be from the outer boundaries of the Section

Operator Aztec Oil and Gas Company			Lease Palmillo State Com.		Well No. 2
Unit Letter J	Section 32	Township 18 South	Range 29 East	County Eddy	
Actual Well Location of Well:					
1796 feet from the South line and		1980 feet from the East line			
Ground Elev. Elev. 3420.8	Producing Formation Morrow	Pool North Turkey Track		Dedicated Acreage: 296.84	Acres

1. Outline the acreage dedicated to the subject well by colored pencil or hatchure marks on the plat below.

2. If more than one lease is dedicated to the well, outline each and identify the ownership thereof (both as to working interest and royalty)

3. If more than one lease of different ownership is dedicated to the well, have the interests of all owners been consolidated by communitization, unitization, force-pooling, etc?

☒ Yes ☐ No If answer is "yes," type of consolidation

If answer is "no," list the owners and tract descriptions which have actually been consolidated (Use reverse side of this form if necessary.)

No allowable will be assigned to the well until all interests have been consolidated (by communitization, unitization, forced-pooling, or otherwise) or until a non-standard unit, eliminating such interests, has been approved by the Commission.

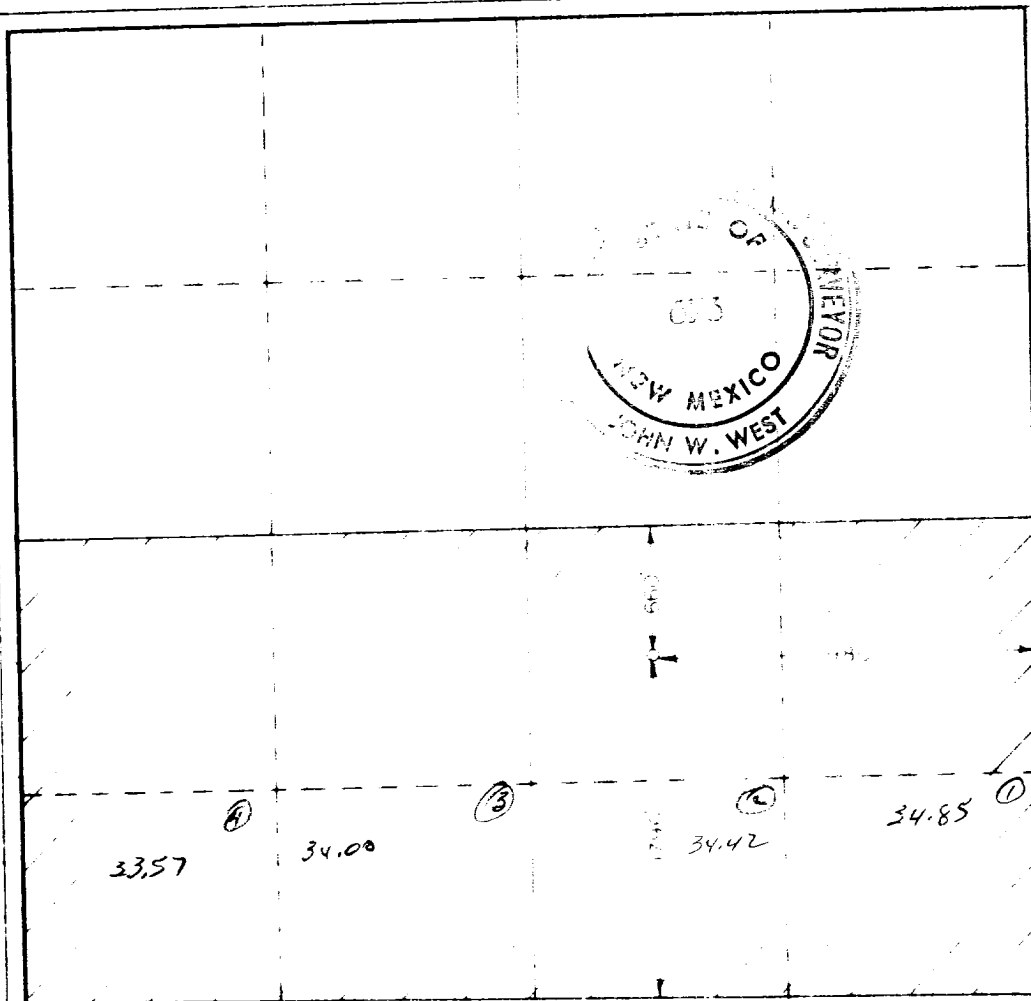
RECEIVED

NOV 14 1977

O. C. C.

ARTESIA, OFFICE

See attached



CERTIFICATION

I hereby certify that the information contained herein is true and complete to the best of my knowledge and belief.

Name **John W West**
 Position **Agent**

Company
Aztec Oil & Gas Co.

Date
Nov. 10, 1977

I hereby certify that the well location shown on this plat was plotted from field notes of actual surveys made by me or under my supervision, and that the same is true and correct to the best of my knowledge and belief.

Date Surveyed
November 8, 1977

Registered Professional Engineer and/or Land Surveyor

John W West
 Certificate No. **676**

