

MEXICO OIL CONSERVATION COMMISSION
WELL LOCATION AND ACREAGE DEDICATION PLAT

Form C-102
Supersedes C-128
Effective 1-1-65

All distances must be from the outer boundaries of the Section.

Operator Petroleum Reserve Corporation		Lease Elliott-Fed.		Well No. 1
Unit Letter H	Section 30	Township 18 South	Range 30 East	County Eddy
Actual Footage Location of Well: 1980 feet from the North line and 660 feet from the East line				
Ground Level Elev. 3474	Producing Formation Morrow		Pool Wildcat	Dedicated Acreage: 320 Acres

1. Outline the acreage dedicated to the subject well by colored pencil or hachure marks on the plat below.
2. If more than one lease is dedicated to the well, outline each and identify the ownership thereof (both as to working interest and royalty).
3. If more than one lease of different ownership is dedicated to the well, have the interests of all owners been consolidated by communitization, unitization, force-pooling, etc?

RECEIVED

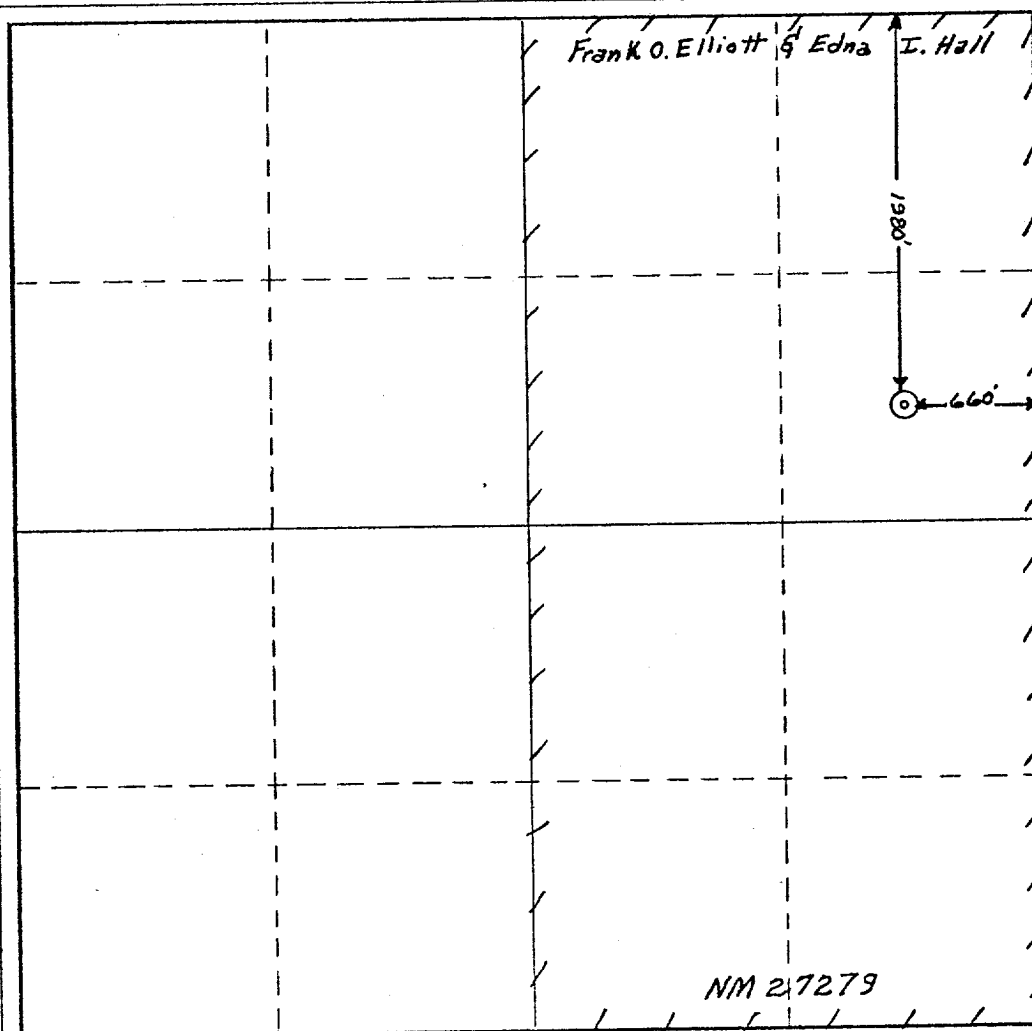
OCT 19 1977

**U. S. GEOLOGICAL SURVEY
ARTESIA, NEW MEXICO**

☐ Yes ☐ No If answer is "yes," type of consolidation _____

If answer is "no," list the owners and tract descriptions which have actually been consolidated. (Use reverse side of this form if necessary.) _____

No allowable will be assigned to the well until all interests have been consolidated (by communitization, unitization, forced-pooling, or otherwise) or until a non-standard unit, eliminating such interests, has been approved by the Commission.



CERTIFICATION

I hereby certify that the information contained herein is true and complete to the best of my knowledge and belief.

Name

Position

Wm. B. Johnston

Company

Petroleum Reserve Corp.

Date

10/13/77

I hereby certify that the well location shown on this plat was plotted from field notes of actual surveys made by me or under my supervision, and that the same is true and correct to the best of my knowledge and belief.

Date Surveyed

10/10/77

Registered Professional Engineer
and/or Land Surveyor

Certificate No.

NM 27279

0 330 550 900 1320 1650 1980 2310 2640 2000 1500 1000 500 0