

NEW MEXICO OIL CONSERVATION COMMISSION
WELL LOCATION AND ACREAGE DEDICATION AT

Form C-102
Supersedes C-128
Effective 1-1-65

All distances must be from the outer boundaries of the Section.

| | | | | |
|--|--------------------------------------|-----------------------------|--|-----------------------|
| Operator YATES PETROLEUM CORPORATION | | Lease Federal AB | | Well No. 5 |
| Unit Letter L | Section 21 | Township 18 South | Range 25 East | County Eddy |
| Actual Footage Location of Well: 1980 feet from the South line and 660 feet from the West line. | | | | |
| Ground Level Elev. 3560.8 | Producing Formation Morrow | Pool | Dedicated Acreage: 320 Acres | |

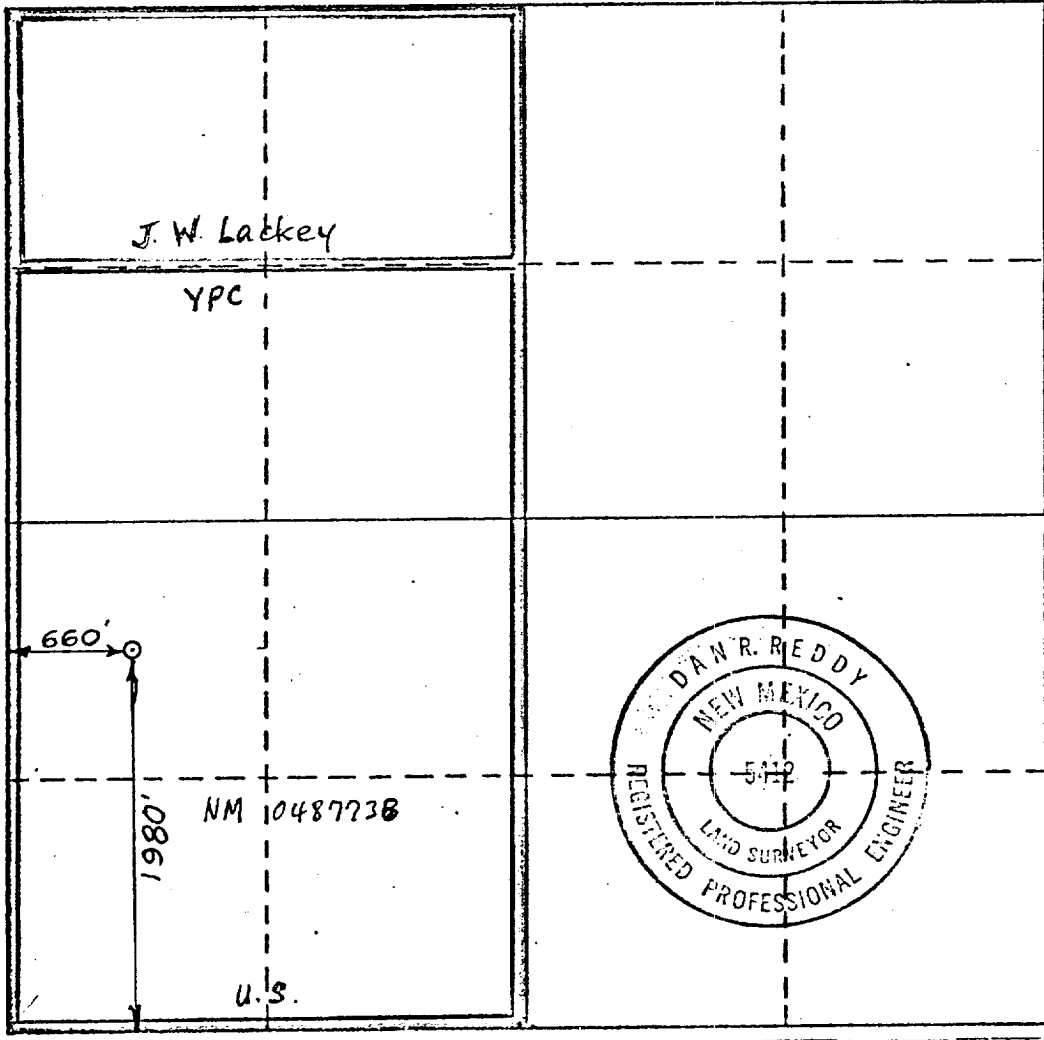
- Outline the acreage dedicated to the subject well by colored pencil or other marks on the plat below.
- If more than one lease is dedicated to the well, outline each and identify the ownership thereof (both as to working interest and royalty).
- If more than one lease of different ownership is dedicated to the well, have the interests of all owners been consolidated by communitization, unitization, force-pooling, etc?

RECEIVED
JAN 12 1978
D. G. GEOLOGICAL SURVEY
ARTESIA, NEW MEXICO

Yes No If answer is "yes," type of consolidation Being Communitized

If answer is "no," list the owners and tract descriptions which have actually been consolidated. (Use reverse side of this form if necessary.)

No allowable will be assigned to the well until all interests have been consolidated (by communitization, unitization, forced-pooling, or otherwise) or until a non-standard unit, eliminating such interests, has been approved by the Commission.



CERTIFICATION

I hereby certify that the information contained herein is true and complete to the best of my knowledge and belief.

Eddie M. Mahfood
Name
EDDIE M. MAHFOOD
Position
ENGINEER
Company
YATES PETROLEUM CORP
Date
1-9-78

I hereby certify that the well location shown on this plat was plotted from field notes of actual surveys made by me or under my supervision, and that the same is true and correct to the best of my knowledge and belief.

Date Surveyed
Jan. 7, 1978
Registered Professional Engineer and/or Land Surveyor
Dan R. Reddy
Certificate No.
NM PE&LS 5412

