

UNITED STATES
DEPARTMENT OF THE INTERIOR
GEOLOGICAL SURVEY

30-015-22506

5. LEASE DESIGNATION AND SERIAL NO.

LC-029420-B

6. IF INDIAN, ALLOTTEE OR TRIBE NAME

7. UNIT AGREEMENT NAME

Skelly Unit

8. FAIRM OR LEASE NAME

9. WELL NO.

10. FIELD AND FOOT, OR WILDCAT

11. SEC., T., R., M., OR PLK.

AND SURVEY OR AREA

12. COUNTY OR PARISH

Eddy

13. STATE

N.M.

APPLICATION FOR PERMIT TO DRILL, DEEPEN, OR PLUG BACK

1a. TYPE OF WORK

DRILL ☒DEEPEN ☐PLUG BACK ☐

b. TYPE OF WELL

OIL
WELL ☒GAS
WELL ☐

OTHER

SINGLE
ZONE ☒MULTIPLE
ZONE ☐

2. NAME OF OPERATOR

Getty Oil Company

3. ADDRESS OF OPERATOR

P. O. Box 730; Hobbs, New Mexico 88240

4. LOCATION OF WELL (Report location clearly and in accordance with any State requirements.)

At surface

At proposed prod. zone

14. DISTANCE IN MILES AND DIRECTION FROM NEAREST TOWN OR POST OFFICE*

5 miles Southwest of Maljamar, N.M.

15. DISTANCE FROM PROPOSED*

LOCATION TO NEAREST
PROPERTY OR LEASE LINE, FT.
(Also to nearest drilg. unit line, if any)

1980'

18. DISTANCE FROM PROPOSED LOCATION*

TO NEAREST WELL, DRILLING, COMPLETED,
OR ABANDONED, ON THIS LEASE, FT.

150'

16. NO. OF ACRES IN LEASE

4040

19. PROPOSED DEPTH

2600

17. NO. OF ACRES ASSIGNED
TO THIS WELL

40

20. ROTARY OR CABLE TOOLS

Rotary

21. ELEVATIONS (Show whether DF, RT, GR, etc.)

3787 GR

22. APPROX. DATE WORK WILL START*

APRIL 1978

23. PROPOSED CASING AND CEMENTING PROGRAM

SIZE OF HOLE	SIZE OF CASING	WEIGHT PER FOOT	SETTING DEPTH	QUANTITY OF CEMENT
12 1/2	8 5/8 K-55	24	700	290 SXS
7 7/8	5 1/2 K-55	14	2600	*

* To be determined by cal.iber log

- The geologic surface formation is Triassic redbeds with a coverage of Quaternary sand dunes.
- The estimated tops of important geologic markers are:
 - anhydrite - 400'
 - salt top - 600'
 - salt base - 1600'
 - yates - 1750'
 - Seven Rivers 2100'
- The estimated depths for oil and gas production will be from 2100' to TD.
- The above casing program will be new casing.
- See reverse side for control equipment schematics.
- Will use approximately 500 bbls. total of 10.5# brine water from surface to TD.
- A sub will be on the floor @ all times w/full opening valve.
- A possibility of coring from 2100 to T.D. Decision to be made at a later date. Logging will be CNL-FDC and DLL-RXO. Will run temperature survey to determine cement top behind 5 1/2 casing.
- No abnormal pressures or temperatures or H₂S gas expected.
- Anticipate starting in latter half of 1st quarter 1978 w/a duration of 5 days.

RECEIVED

MAR 7-1978

U.S. GEOLOGICAL SURVEY
ARTESIA, NEW MEXICO

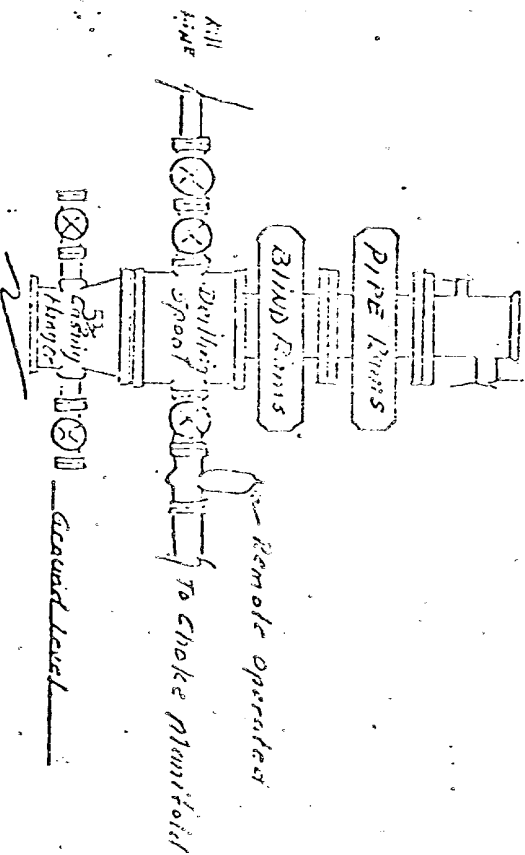
24. IN CASE OF STATE RESCINDING PROPOSED PROGRAM: If proposed to deepen or plug back, give data on present productive zone and proposed new productive zone. If proposed to drill or deepen directionally, give pertinent data on old surface locations and measured and true vertical depth. Give 11 most pertinent points, if any.

APPROVED BY [Signature] TITLE Area Superintendent DATE APR 17 1978

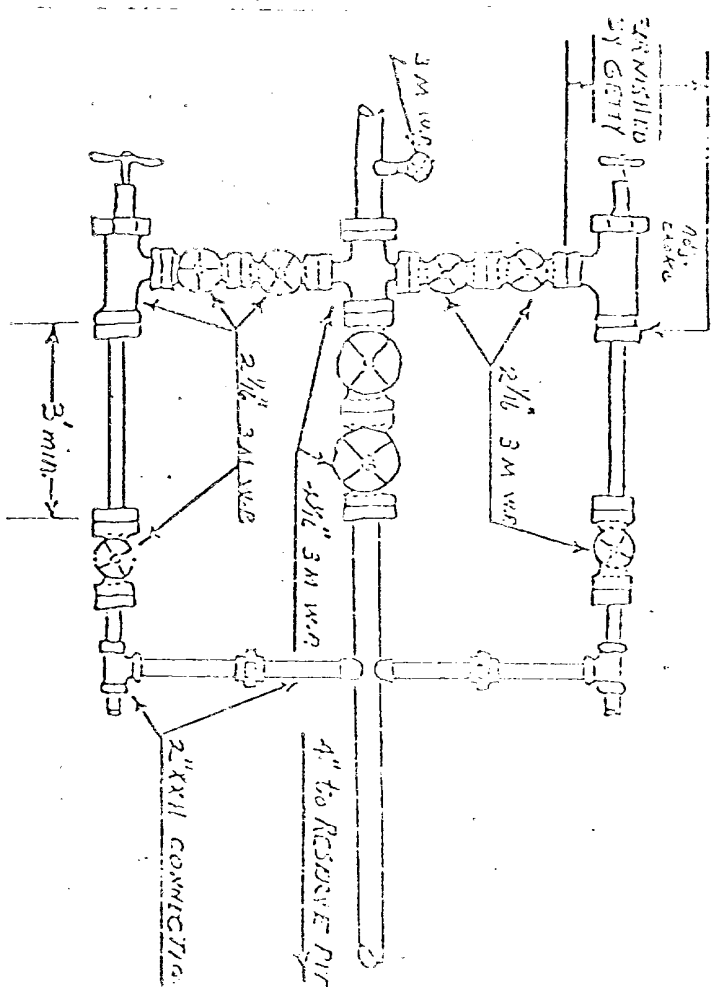
(This space for Federal or State office use)

APPROVED BY [Signature] TITLE ACTING DISTRICT ENGINEER DATE APR 17 1978THIS APPROVAL IS RESCINDED IF OPERATIONS
ARE NOT COMMENCED WITHIN 3 MONTHS.
EXPIRES III 17 1979

Furnished by City.



Q11 3000 psi W.D.



MANIFOLD SHOWN IS MINIMUM THAT IS ACCEPTABLE.

NEW MEXICO OIL CONSERVATION COMMISSION
WELL LOCATION AND ACREAGE DEDICATION PLAT

Corrected

Form C-102
Supersedes C-128
Effective 1-1-65

All distances must be from the outer boundaries of the Section.

Operator GETTY OIL COMPANY		Lease Skelly Unit		Well No. 137
Unit Letter "C"	Section 28	Township 17 South	Range 31 East	County Eddy
Actual Postage Location of Well:				
810	feet from the North	line and	2080	feet from the West line
Ground Level Elev. 3787	Producing Formation 7-Rivers	Pool Fren 7 Rivers	Dedicated Acreage 40	

- Outline the acreage dedicated to the subject well by colored pencil or hatchure marks on the plat below.
- If more than one lease is dedicated to the well, outline each and identify the ownership thereof (both as to working interest and royalty).
- If more than one lease of different ownership is dedicated to the well, have the interests of all owners been consolidated by communitization, unitization, force-pooling, etc?

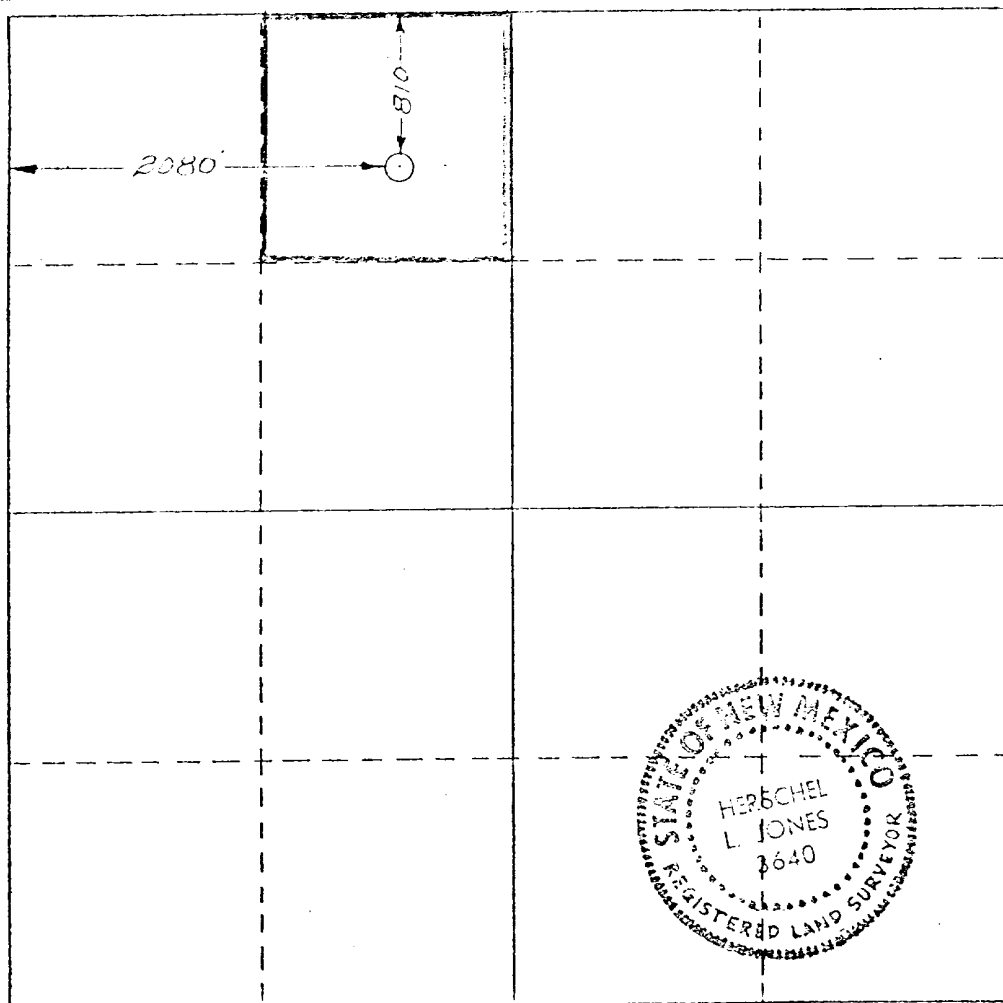
☐ Yes ☐ No

If answer is "yes," type of consolidation

If answer is "no," list the owners and tract descriptions which have not been consolidated. (Use reverse side of this form if necessary.)

No allowable will be assigned to the well until all interests have been consolidated (by communitization, unitization, forced-pooling, or otherwise) or until a non-standard unit, eliminating such interests, has been approved by the Commission.

RECEIVED
APR 11 1978
U.S. DEPARTMENT OF THE INTERIOR
BUREAU OF LAND SURVEY
ARTESIA, NEW MEXICO



CERTIFICATION

I hereby certify that the information contained herein is true and complete to the best of my knowledge and belief.

Dale R. Crockett

Name

Dale R. Crockett

Position

Area Superintendent

Company

Getty Oil Company

Date

4-4-78

I hereby certify that the well location shown on this plat was plotted from field notes of actual surveys made by me or under my supervision, and that the same is true and correct to the best of my knowledge and belief.

Date Surveyed

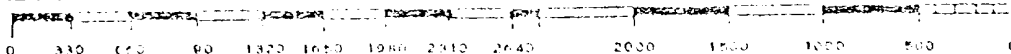
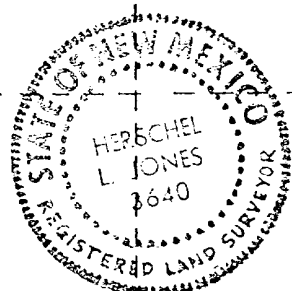
April 4, 1978

Registered Professional Engineer and/or Land Surveyor

Herchel L. Jones

Certificate No.

3640



NL MEXICO OIL CONSERVATION COMMISSION
WELL LOCATION AND ACREAGE DEDICATION PLAT

Form C-102
Supersedes C-128
Effective 1-1-65

All distances must be from the outer boundaries of the Section.

Operator GETTY OIL COMPANY			Lease Skelly Unit			Well No. 137		
Unit Letter C	Section 28	Township 17 South	Range 31 East	County Eddy				
Actual Footage Location of Well: 810 feet from the North line and 1980 feet from the West line								
Ground Level Elev. 3787	Producing Formation 7-Rivers		Pool Fren			Dedicated Acreage: 40 Acres		

1. Outline the acreage dedicated to the subject well by colored pencil or hachure marks on the plat below.
2. If more than one lease is dedicated to the well, outline each and identify the ownership thereof (both as to working interest and royalty).
3. If more than one lease of different ownership is dedicated to the well, have the interests of all owners been consolidated by communitization, unitization, force-pooling, etc?

RECEIVED

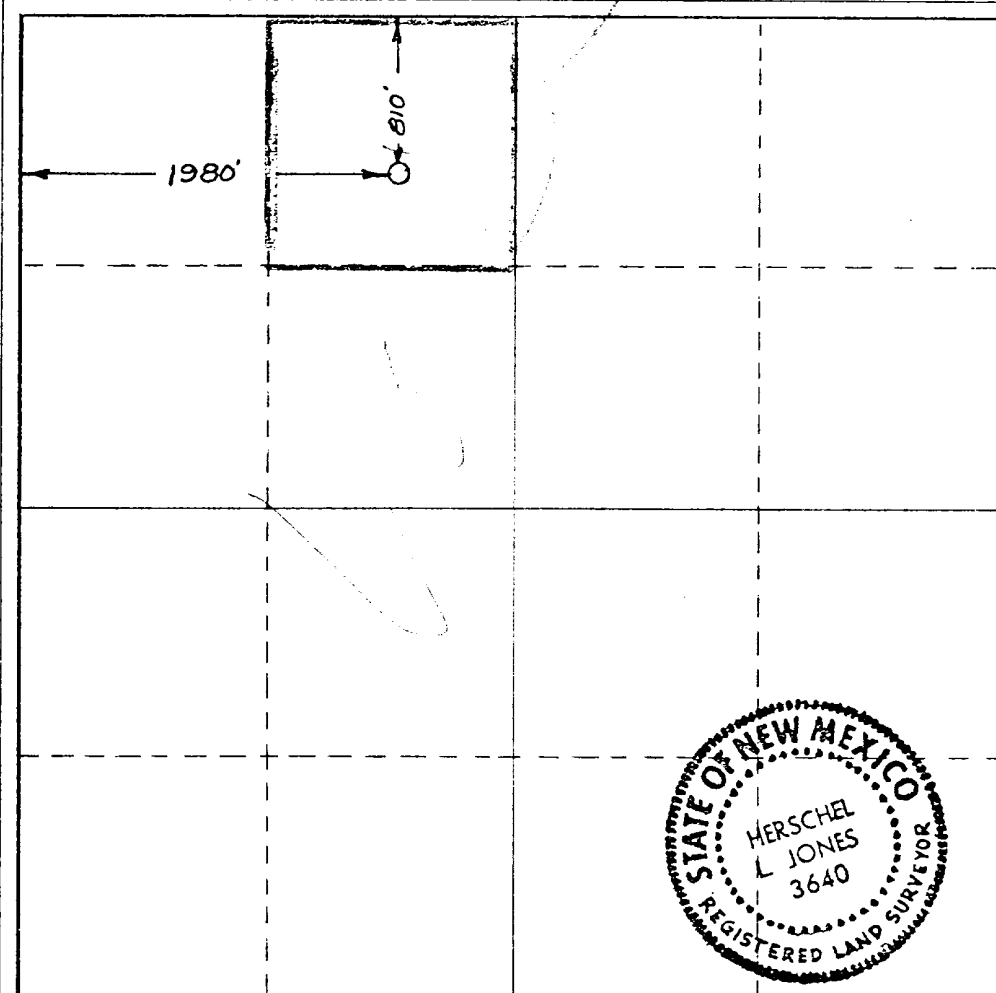
MAR 7-1978

☐ Yes ☐ No If answer is "yes," type of consolidation _____

**U.S. GEOLOGICAL SURVEY
ARTESIA, NEW MEXICO**

If answer is "no," list the owners and tract descriptions which have actually been consolidated. (Use reverse side of this form if necessary.) _____

No allowable will be assigned to the well until all interests have been consolidated (by communitization, unitization, forced-pooling, or otherwise) or until a non-standard unit, eliminating such interests, has been approved by the Commission.



CERTIFICATION

I hereby certify that the information contained herein is true and complete to the best of my knowledge and belief.

Name
Dale R. Crockett
Position
Area Superintendent
Company
Getty Oil Company
Date
March 6, 1978

I hereby certify that the well location shown on this plat was plotted from field notes of actual surveys made by me or under my supervision, and that the same is true and correct to the best of my knowledge and belief.

Date Surveyed
February 20, 1978
Registered Professional Engineer
and/or Land Surveyor

[Signature]
Certificate No. **3640**

