

WELL LOCATION AND ACREAGE DEDICATION PLAT

Form C-102
Supersedes C-128
Effective 1-1-65

All distances must be from the outer boundaries of the Section.

Operator Hondo Drilling Company			Lease Alscott Fed.		Well No. 3
Unit Letter 0	Section 31	Township 18S	Range 29E	County Eddy	
Actual Footage Location of Well: 660 feet from the South line and 1980 feet from the E line NMPM					
Ground Level Elev. 3398'	Producing Formation Morrow		Pool <i>U.S. Well</i> Turkey Track-Morrow		Dedicated Acreage: 32.54 276.4 Acres

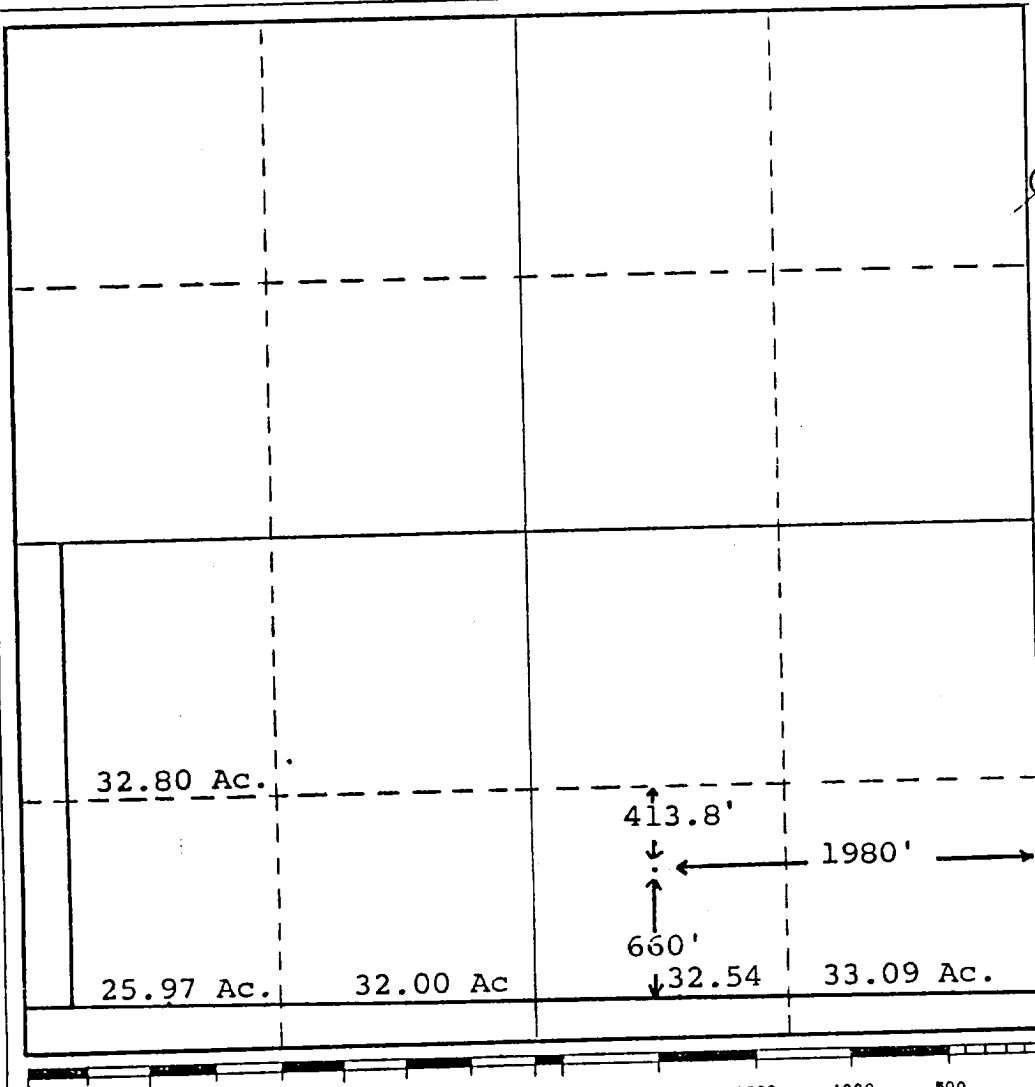
1. Outline the acreage dedicated to the subject well by colored pencil or hachure marks on the plat below.
2. If more than one lease is dedicated to the well, outline each and identify the ownership thereof (including working interest and royalty).
3. If more than one lease of different ownership is dedicated to the well, have the interests of all owners been consolidated by communitization, unitization, force-pooling, etc?

☐ Yes ☐ No If answer is "yes," type of consolidation _____

If answer is "no," list the owners and tract descriptions which have actually been consolidated. (Use reverse side of this form if necessary.) _____

No allowable will be assigned to the well until all interests have been consolidated (by communitization, unitization, forced-pooling, or otherwise) or until a non-standard unit, eliminating such interests, has been approved by the Commission.

RECEIVED
APR 28 1978
U.S. GEOLOGICAL SURVEY
ARTESIA, NEW MEXICO



CERTIFICATION

I hereby certify that the information contained herein is true and complete to the best of my knowledge and belief.

Nathan Outlaw
Name
Nathan Outlaw
Position
President
Company
Hondo Drilling Co.
Date
4-21-78

I hereby certify that the well location shown on this plat was plotted from field notes of actual surveys made by me or under my supervision, and that the same is true and correct to the best of my knowledge and belief.

Date Surveyed
4-21-78

Registered Professional Engineer and/or Land Surveyor

N. Raymond Lamb
N. Raymond Lamb
Certificate No.
929