

OCC COPY
UNITED STATES
DEPARTMENT OF THE INTERIOR
GEOLOGICAL SURVEYSUBMIT IN TRIPLICATE*
(Other instructions on
reverse side)Copy to 87
Form approved.
Budget Bureau No. 42-R1425.

30-015-22559

APPLICATION FOR PERMIT TO DRILL, DEEPEN, OR PLUG BACK

1a. TYPE OF WORK

DRILL ☒DEEPEN ☐PLUG BACK ☐

5. LEASE DESIGNATION AND SERIAL NO.

NM 0557371

6. IF INDIAN, ALLOTTEE OR TRIBE NAME

7. UNIT AGREEMENT NAME
Empire Abo Pressure
Maintenance Project

8. FARM OR LEASE NAME

Empire Abo Unit "K"

9. WELL NO.

184

10. FIELD AND POOL, OR WILDCAT

X Empire Abo

11. SEC., T., R., M., OR BLK.
AND SURVEY OR AREA

1-18S-27E

12. COUNTY OR PARISH

Eddy

13. STATE

N.M.

b. TYPE OF WELL

OIL
WELL ☒GAS
WELL ☐

OTHER

SINGLE
ZONE ☒MULTIPLE
ZONE ☐

2. NAME OF OPERATOR

Atlantic Richfield Company ✓

3. ADDRESS OF OPERATOR

P. O. Box 1710, Hobbs, New Mexico 88240

4. LOCATION OF WELL (Report location clearly and in accordance with any State requirements.)*

At surface

2290' FSL & 2445' FWL (Unit letter K)

At proposed prod. zone

as above

14. DISTANCE IN MILES AND DIRECTION FROM NEAREST TOWN OR POST OFFICE*

RECEIVED

MAY 26 1978

O. C. C.

ARTESIA, OFFICE

10. DISTANCE FROM PROPOSED*

LOCATION TO NEAREST
PROPERTY OR LEASE LINE, FT.
(Also to nearest drlg. unit line, if any)

16. NO. OF ACRES IN LEASE

17. NO. OF ACRES ASSIGNED
TO THIS WELL

40

18. DISTANCE FROM PROPOSED LOCATION*
TO NEAREST WELL, DRILLING, COMPLETED,
OR APPLIED FOR, ON THIS LEASE, FT.

19. PROPOSED DEPTH

6200'

20. ROTARY OR CABLE TOOLS

Rotary

21. ELEVATIONS (Show whether DF, RT, GR, etc.)

3618.0' GR

22. APPROX. DATE WORK WILL START*

7/15/78

23.

PROPOSED CASING AND CEMENTING PROGRAM

SIZE OF HOLE	SIZE OF CASING	WEIGHT PER FOOT	SETTING DEPTH	QUANTITY OF CEMENT
11"	8-5/8" OD	24# K-55	1000'	400 sx
7-7/8"	5-1/2" OD	14# K-55	6000'	
		15.5# K-55	6200'	1205 sx

Propose to drill an infill development well within the Empire Abo Unit area to more economically recover additional oil reserves and conserve reservoir pressure in accordance with Unit OCC Rules & Regulations NSL-915 as amended.

Blowout Preventer program attached.

RECEIVED

APR 21 1978

U.S. GEOLOGICAL SURVEY
ARTESIA, NEW MEXICO

IN ABOVE SPACE DESCRIBE PROPOSED PROGRAM: If proposal is to deepen or plug back, give data on present productive zone and proposed new productive zone. If proposal is to drill or deepen directionally, give pertinent data on subsurface locations and measured and true vertical depths. Give blowout preventer program, if any.

24.

SIGNED

TITLE

Dist. Drlg. Supt.

DATE

4/12/78

(This space for Federal or State office use)

PERMIT NO.

APPROVAL DATE

MAY 24 1978

APPROVED BY

TITLE

ACTING DISTRICT ENGINEER

DATE

MAY 24 1978

CONDITIONS OF APPROVAL, IF ANY:

THIS APPROVAL IS RESCINDED IF OPERATIONS
ARE NOT COMMENCED WITHIN 3 MONTHS.

EXPIRES AUG 24 1978

*See Instructions On Reverse Side

MEXICO OIL CONSERVATION COMMISSION
WELL LOCATION AND ACREAGE DEDICATION PLAT

Form C-102
Supersedes C-128
Effective 1-1-65

All distances must be from the outer boundaries of the Section

Operator Atlantic Richfield Company			Lease Empire Abo Unit "K"			Well No. 184		
Unit Letter K	Section 1	Township 18 South	Range 27 East	County Eddy				
Actual Footage Location of Well: 2290 feet from the South line and 2445 feet from the West line								
Ground Level Elev. 3618.0	Producing Formation Abo Reef			Lease Empire Abo			Total Acreage 40 Acres	

1. Outline the acreage dedicated to the subject well by colored pencil or hatchure marks on the plat below.
2. If more than one lease is dedicated to the well, outline each and identify the ownership thereof (both as to working interest and royalty).
3. If more than one lease of different ownership is dedicated to the well, have the interests of all owners been consolidated by communitization, unitization, force-pooling, etc?

RECEIVED

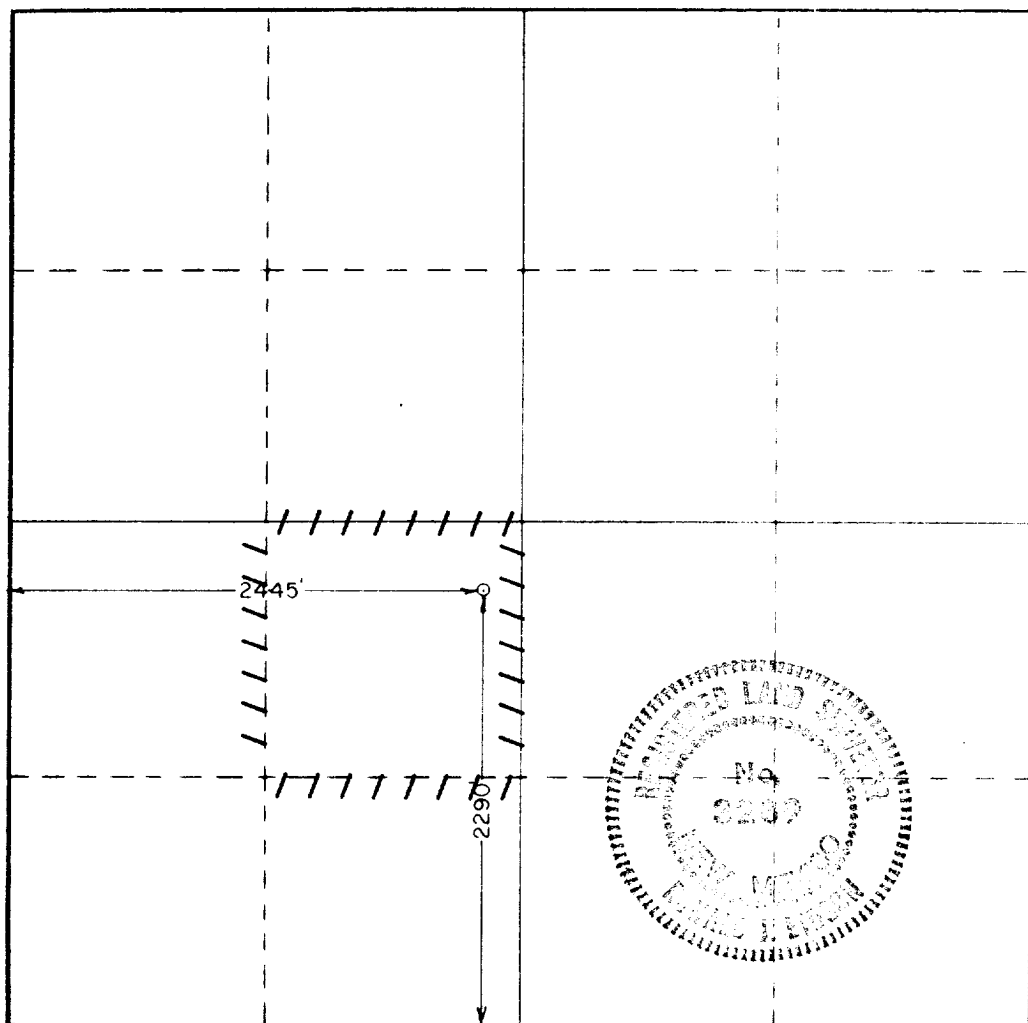
APR 21 1978

**U.S. GEOLOGICAL SURVEY
ARTESIA, NEW MEXICO**

☒ Yes ☐ No If answer is "yes," type of consolidation **Unitization**

If answer is "no," list the owners and tract descriptions which have actually been consolidated (Use reverse side of this form if necessary.) _____

No allowable will be assigned to the well until all interests have been consolidated (by communitization, unitization, forced-pooling, or otherwise) or until a non-standard unit, eliminating such interests, has been approved by the Commission.



CERTIFICATION

I hereby certify that the information contained herein is true and complete to the best of my knowledge and belief

[Signature]

Dist. Drlg. Supt.

Atlantic Richfield Company

4/12/78

I hereby certify that the well location shown on this plat was plotted from field notes of actual surveys made by me or under my supervision and that the same is true and correct to the best of my knowledge and belief

Feb. 15, 1978

Registered Professional Engineer
and Land Surveyor

[Signature: Ronald J. Eidson]

Certificate No. **John W. West 676**
Ronald J. Eidson 3239

