

UNITED STATES
DEPARTMENT OF THE INTERIOR

REVERSE SIDE

GEOLOGICAL SURVEY

30-015-22564

APPLICATION FOR PERMIT TO DRILL, DEEPEN, OR PLUG BACK

1A. TYPE OF WORK

DRILL ☒

DEEPEN ☐

PLUG BACK ☐

B. TYPE OF WELL

OIL
WELL ☒

GAS
WELL ☐

OTHER ☐

2. NAME OF OPERATOR

The Eastland Oil Company

3. ADDRESS OF OPERATOR

704 Western United Life Building, Midland, Texas 79701

4. LOCATION OF WELL (Report location clearly and in accordance with any State requirements.)*

At surface

660' FNL, 330' FWL
At proposed prod. zone

14. DISTANCE IN MILES AND DIRECTION FROM NEAREST TOWN OR POST OFFICE*

9 miles SE Loco Hills, New Mexico

O. C. C.

ARTESIA, OFFICE

10. DISTANCE FROM PROPOSED*

LOCATION TO NEAREST
PROPERTY OR LEASE LINE, FT. 330' from lease line
(Also to nearest drlg. unit line, if any)

16. NO. OF ACRES IN LEASE

120

17. NO. OF ACRES ASSIGNED
TO THIS WELL

40

18. DISTANCE FROM PROPOSED LOCATION*

TO NEAREST WELL, DRILLING, COMPLETED,
OR APPLIED FOR, ON THIS LEASE, FT. 480'

19. PROPOSED DEPTH

3,700

20. ROTARY OR CABLE TOOLS

Rotary

21. ELEVATIONS (Show whether DF, RT, GR, etc.)

3654' GR

22. APPROX. DATE WORK WILL START*

May 20, 1978

23.

PROPOSED CASING AND CEMENTING PROGRAM

SIZE OF HOLE	SIZE OF CASING	WEIGHT PER FOOT	SETTING DEPTH	QUANTITY OF CEMENT
11"	8 5/8"	24#	700'	350 sx Class C 2% CaCl
7 7/8"	4 1/2"	9.5#	3700'	200 sx 50-50 pozmix
				500 sx Lite

Arco - Federal #4 is to be drilled on the same 40 acre proration unit as Arco-Federal #1. Upon completion of Well #4 as a producing well, #1 will be plugged and abandoned. Drilling will be done with a small rotary rig to a depth of approximately 3700 feet in Grayburg sands productive in the Power Grayburg San Andres Pool. Additional geological tops are: Base of salt - 1610', Queen 2770', and Grayburg 3250'.

An 8" series 900 AP13M double BOP will be installed on the surface casing and tested before drilling out cement. No abnormal pressure or temperature is anticipated. Brine water will be used for mud to 3200' at which point saltwater gell and starch will be added. No DST's or cores are planned. At total depth, a GR-Neutron log will be run from 400' - TD. Anticipated starting date is May 20, 1978 with 10 days for completion.

IN ABOVE SPACE DESCRIBE PROPOSED PROGRAM: If proposal is to deepen or plug back, give data on present productive zone and proposed new productive zone. If proposal is to drill or deepen directionally, give pertinent data on subsurface locations and measured and true vertical depths. Give blowout preventer program, if any.

24.

SIGNED

George D. Neal

TITLE

Superintendent

DATE

4-14-78

(This space for Federal or State office use)

PERMIT NO.

APPROVAL DATE

MAY 26 1978

APPROVED BY

CONDITIONS OF APPROVAL, IF ANY:

Joe H. Lara

TITLE

ACTING DISTRICT ENGINEER

DATE

MAY 26 1978

THIS APPROVAL IS RESCINDED IF OPERATIONS
ARE NOT COMMENCED WITHIN 3 MONTHS.

EXPIRES

AUG 26 1978

*See Instructions On Reverse Side

MEXICO OIL CONSERVATION COMMISS
WELL LOCATION AND ACREAGE DEDICATION PLAT

Form 1
Supersedes C-1211
Effective 1-1-65

All distances must be from the outer boundaries of the Section.

Operator Eastland Oil Co.			Lease Arco Fed.		Well No. 4
Unit Letter D	Section 5	Township 18 South	Range 31 East	County Eddy	
Actual Footage Location of Well: 660 feet from the North line and 330 feet from the West line					
Ground Level Elev. 3654.0	Producing Formation Grayburg		Pool Power Grayburg San Andres		Dedicated Acreage: 40 39.97 Acres

1. Outline the acreage dedicated to the subject well by colored pencil or hachure marks on the plat below.
2. If more than one lease is dedicated to the well, outline each and identify the ownership thereof (both as to working interest and royalty).
3. If more than one lease of different ownership is dedicated to the well, have the interests of all owners been consolidated by communitization, unitization, force-pooling, etc?

☐ Yes ☐ No If answer is "yes," type of consolidation _____

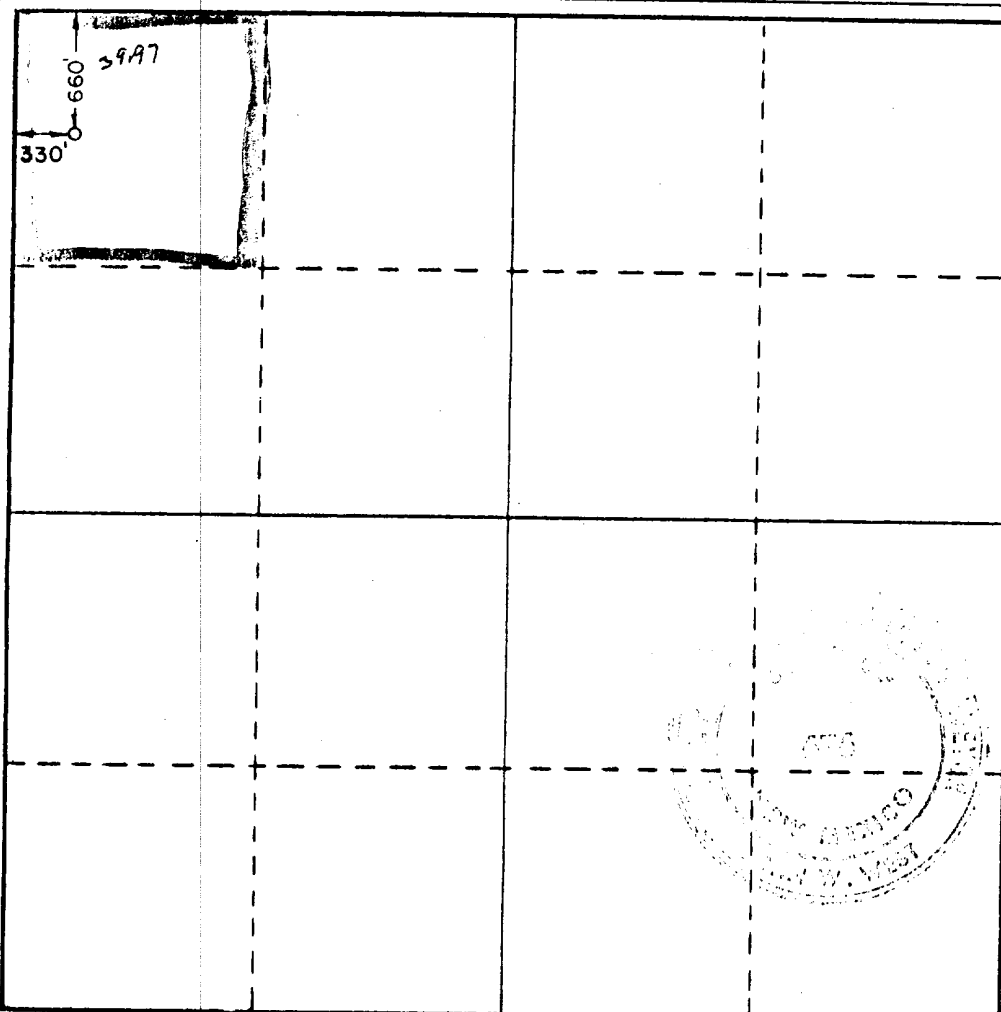
If answer is "no," list the owners and tract descriptions which have actually been consolidated. (Use reverse side of this form if necessary.) _____

No allowable will be assigned to the well until all interests have been consolidated (by communitization, unitization, forced-pooling, or otherwise) or until a non-standard unit, eliminating such interests, has been approved by the Commission.

RECEIVED

APR 20 1978

**U.S. GEOLOGICAL SURVEY
ARTESIA, NEW MEXICO**



CERTIFICATION

I hereby certify that the information contained herein is true and complete to the best of my knowledge and belief.

George D. Neal
Name

George D. Neal

Position

Superintendent

Company

The Eastland Oil Company

Date

April 14, 1978

I hereby certify that the well location shown on this plat was plotted from field notes of actual surveys made by me or under my supervision, and that the same is true and correct to the best of my knowledge and belief.

Date Surveyed

4/7/78

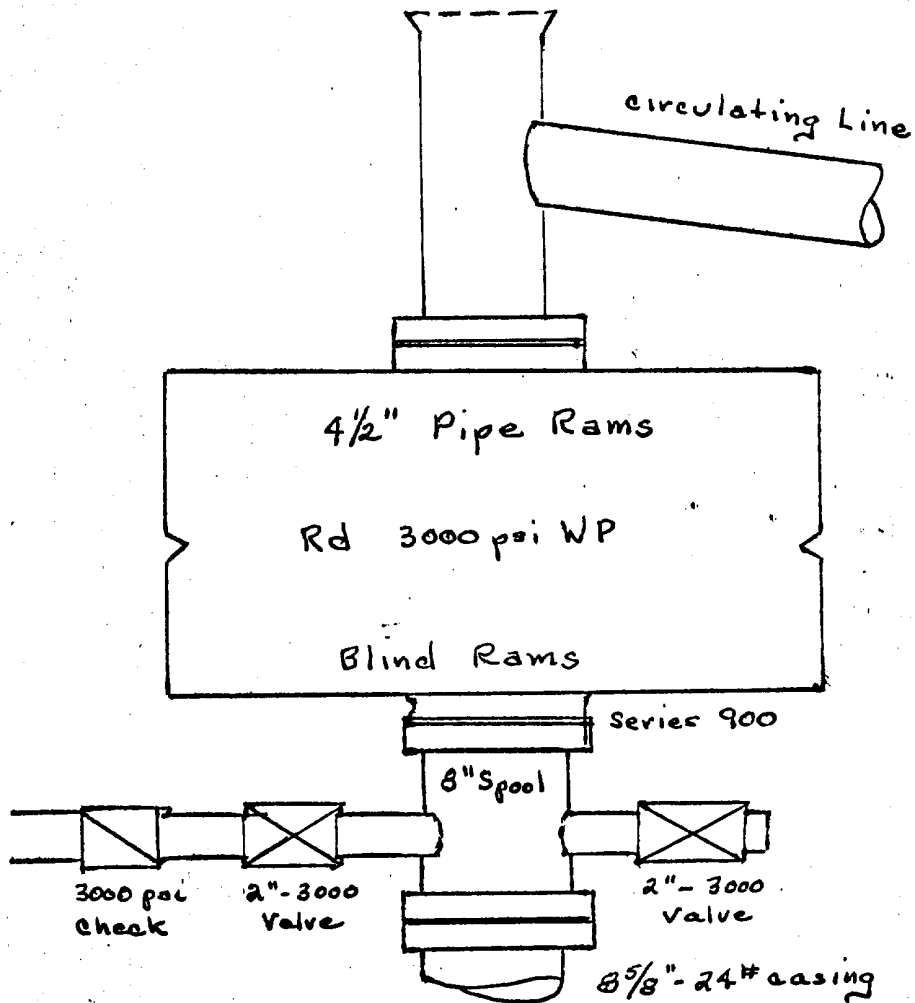
Registered Professional Engineer and/or Land Surveyor

John W. West
Certificate No. John W. West 679

Ronald J. Edson 5259

Exhibit D

The Eastland Oil Company
ARCO-Federal #4



Manual BOP for 8 5/8" casing

THE EASTLAND OIL COMPANY
ARCO - FEDERAL WELL NO. 4
660' FNL and 330' FWL
Sec. 5, T18S, R31E
Eddy County, New Mexico

RECEIVED

APR 20 1978

U.S. GEOLOGICAL SURVEY
ARTESIA, NEW MEXICO

SURFACE USE AND OPERATIONS PLAN

1. Existing roads: U. S. G. S. topographic map marked as Exhibit A shows existing roads with exit from State highway 31. A lease road extends from the highway and passes by the location.
2. Planned access roads: No additional access roads will be needed. No fences will be crossed and no cattle guards will be used.
3. Location of existing wells: All wells within a one-mile radius of the proposed location are marked on Exhibit A.
4. Location of tank batteries, production facilities and service lines: Production from this well will go into the existing tank battery shown on well plot and marked Exhibit B. A flow line will be laid on the surface from the well to the battery, a distance of approximately 1000 feet. Produced formation water will go to the disposal well from the treater by an existing fiber glass line.
5. Location and type of water supply: Water needed for drilling will be trucked from Loco Hills. No water supply will be developed on the lease.
6. Source of construction materials: Cacliche for the location pad will be hauled from an existing pit in Section 1, 1 1/2 miles from the location. Surface material moved to level the location will be retained to refill pits.
7. Method for handling waste disposal: Waste material including cuttings, garbage, and drilling fluids will be contained in pits at the location. Incendiary material will be burned on location. After drying out, pits will be covered. Produced oil will be contained in test tanks and moved to tank battery upon completion.
8. Ancillary facilities: No camps or airstrips will be required.
9. Well site layout: Exhibit C.
10. Plans for restoration of the surface: The surface is loose sand with limited vegetation. After completion or P&A of the well, the surface will be leveled as soon as the pits are dry (approximately 60 days). All waste will be covered.

THE EASTLAND OIL COMPANY
ARCO - FEDERAL WELL NO. 4
SURFACE USE AND OPERATIONS PLAN (cont'd - Page Two)

OTHER INFORMATION:

11. The surface ownership is Federal and the only surface use is live stock grazing. There is no water source in the area and the general terrain is rolling sand dunes.

12. Lessee's or operator's representative:

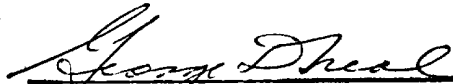
George D. Neal
704 Western United Life Building
Midland, Texas 79701

Telephone: A/C 915 683-6293

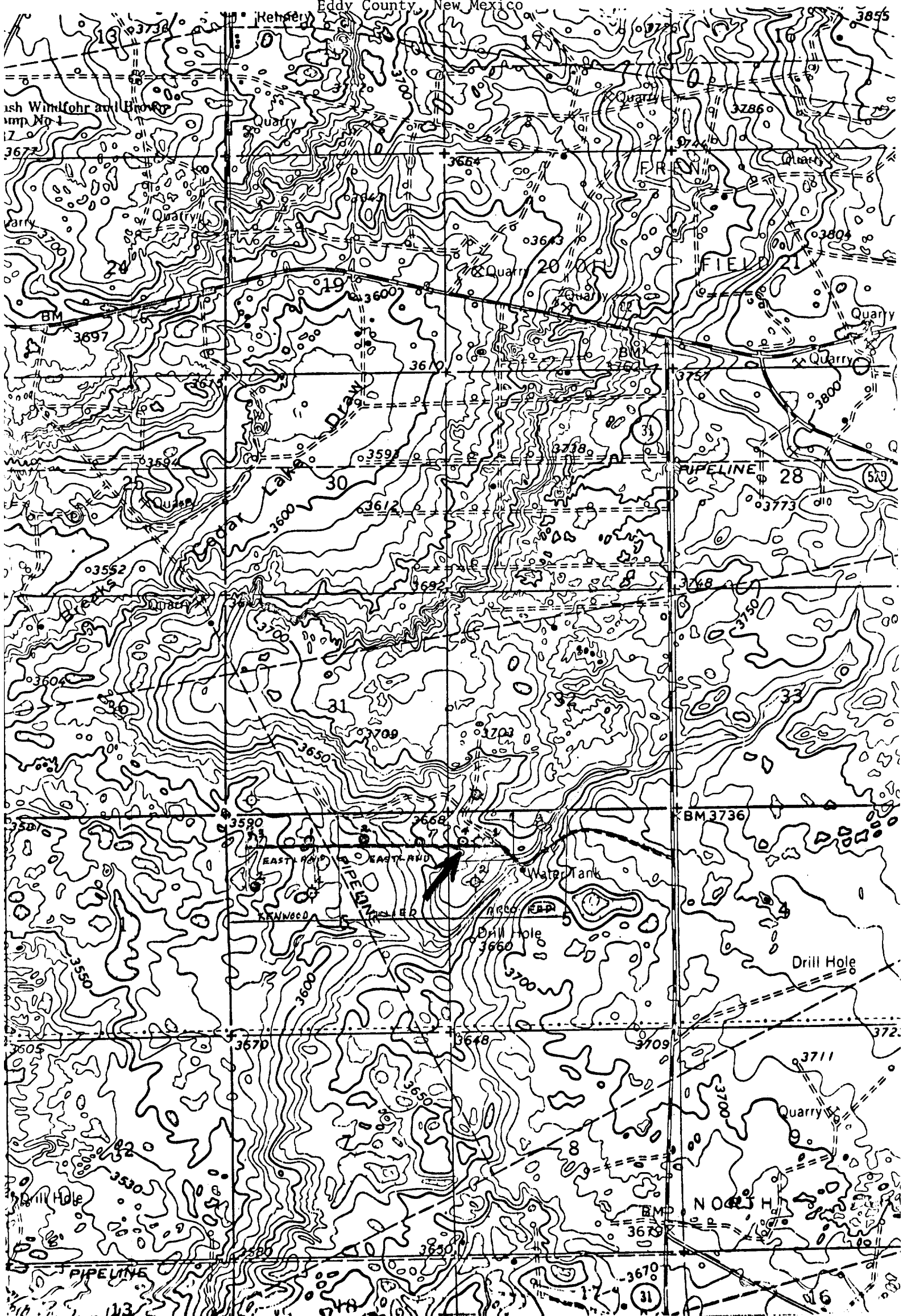
13. Certification -

I hereby certify that I, or persons under my direct supervision, have inspected the proposed drillsite and access route; that I am familiar with the conditions which presently exist; that the statements made in this plan are, to the best of my knowledge, true and correct; and, that the work associated with the operations proposed herein will be performed by The Eastland Oil Company and its contractors and subcontractors in conformity with this plan and the terms and conditions under which it is approved.

April 14, 1978


George D. Neal
Superintendent

ARCO-FEDERAL #4
Eddy County, New Mexico



WELL LOCATION AND ACREAGE DEDICATION PLAT

Effective 11-65

Exhibit "B"

All distances must be from the outer boundaries of the Section.

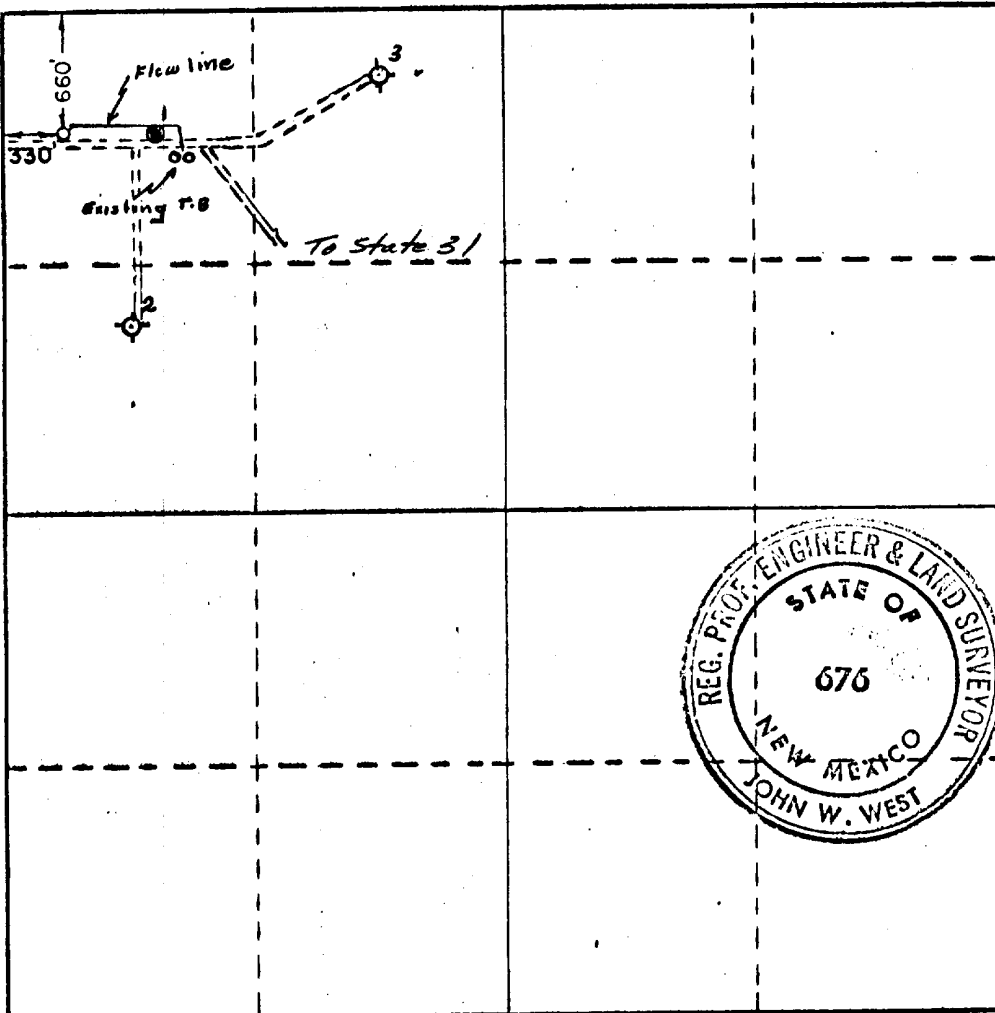
Operator Eastland Oil Co.			Lease Arco Fed.		Well No. 4
Unit Letter D	Section 5	Township 18 South	Range 31 East	County Eddy	
Actual Footage Location of Well: 660 feet from the North line and 330 feet from the West line					
Ground Level Elev. 3654.0	Producing Formation Grayburg	Pool Power Grayburg San Andres		Dedicated Acreage: 40 Acres	

1. Outline the acreage dedicated to the subject well by colored pencil or hachure marks on the plat below.
2. If more than one lease is dedicated to the well, outline each and identify the ownership thereof (both as to working interest and royalty).
3. If more than one lease of different ownership is dedicated to the well, have the interests of all owners been consolidated by communitization, unitization, force-pooling, etc?

☐ Yes ☐ No If answer is "yes," type of consolidation _____

If answer is "no," list the owners and tract descriptions which have actually been consolidated. (Use reverse side of this form if necessary.) _____

No allowable will be assigned to the well until all interests have been consolidated (by communitization, unitization, forced-pooling, or otherwise) or until a non-standard unit, eliminating such interests, has been approved by the Commission.



CERTIFICATION

I hereby certify that the information contained herein is true and complete to the best of my knowledge and belief.

Name

George D. Neal

Position

Superintendent

Company

The Eastland Oil Company

Date

April 14, 1978

I hereby certify that the well location shown on this plat was plotted from field notes of actual surveys made by me or under my supervision, and that the same is true and correct to the best of my knowledge and belief.

Date Surveyed

4/7/78

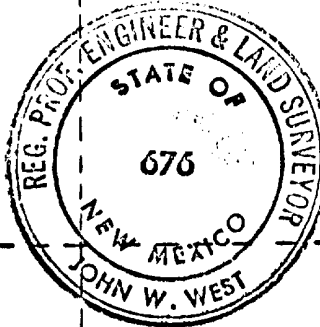
Registered Professional Engineer
and/or Land Surveyor

John W. West

Certificate No. John W. West

676

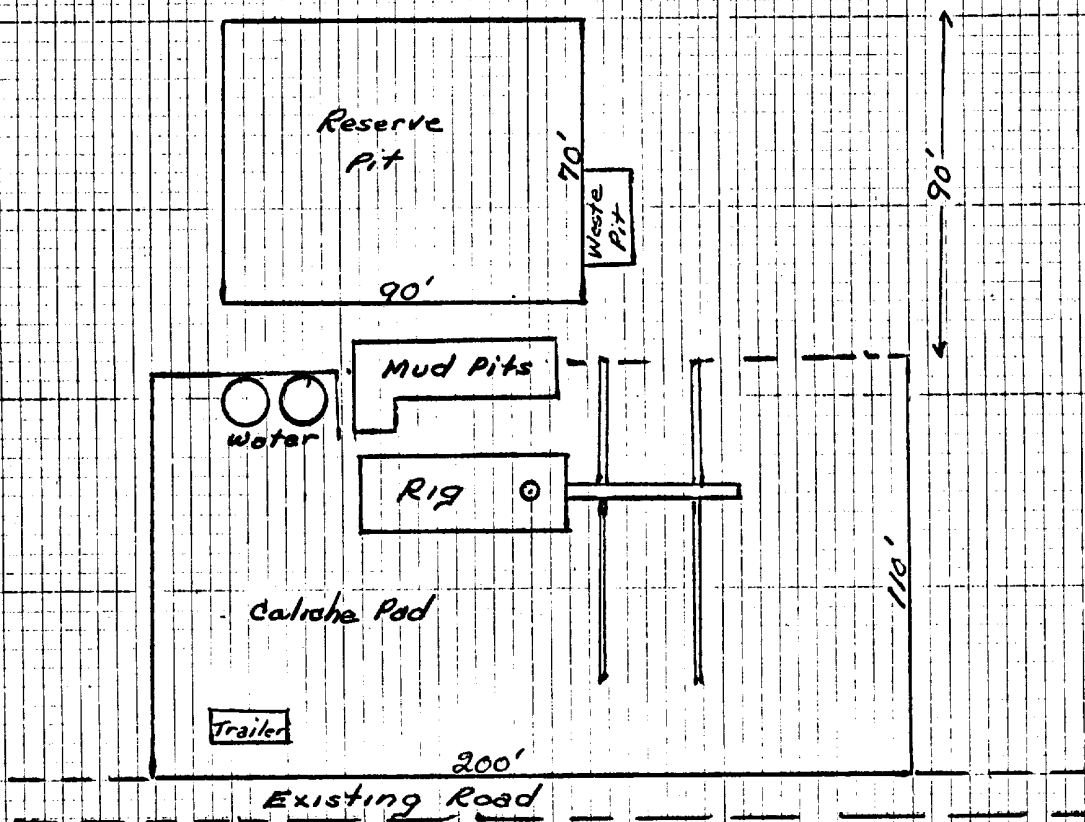
Ronald J. Egan 1259



The Eastland Oil Company
ARCO-Federal #4
Exhibit C



Scale: 1" = 50'



Sandy Surface w/ Light Vegetation