

UNITED STATES
DEPARTMENT OF THE INTERIOR
BUREAU OF LAND MANAGEMENT

SUBMIT IN T
(Other, Instruc
verse side)

Form approved.
Budget Bureau No. 1004-0135
Expires August 31, 1985

3. LEASE DESIGNATION AND SERIAL NO.

LC-067858

SUNDRY NOTICES AND REPORTS ON WELLS

(Do not use this form for proposals to drill or to deepen or plug back to a different reservoir.
Use "APPLICATION FOR PERMIT—" for such proposals.)

1.

OIL WELL ☒ GAS WELL ☐ OTHER ☐

2. NAME OF OPERATOR

ARCO OIL AND GAS COMPANY

3. ADDRESS OF OPERATOR

P.O. Box 1710, Hobbs, New Mexico 88240

4. LOCATION OF WELL (Report location clearly and in accordance with any State requirements.
See also space 17 below.)

At surface

625' FNL and 175' FWL (Unit Letter D)

14. PERMIT NO.

15. ELEVATIONS (Show whether DF, RT, GR, etc.)

3540.6 GR

7. UNIT AGREEMENT NAME

EMPIRE ABO PRESSURE
MAINTENANCE PROJECT

8. FARM OR LEASE NAME

EMPIRE ABO UNIT

9. WELL NO.

EMBIRE ABO UNIT "M" #132

10. FIELD AND POOL, OR WILDCAT

EMPIRE ABO

11. SEC., T., R., M., OR BLK. AND
SURVEY OR AREA

11-18S-27E

12. COUNTY OR PARISH

EDDY

13. STATE

NM

16. Check Appropriate Box To Indicate Nature of Notice, Report, or Other Data

NOTICE OF INTENTION TO:

TEST WATER SHUT-OFF

FRACTURE TREAT

SHOOT OR ACIDIZE

REPAIR WELL

(Other)

PULL OR ALTER CASING

MULTIPLE COMPLETE

ABANDON*

CHANGE PLANS

SUBSEQUENT REPORT OF:

WATER SHUT-OFF

FRACTURE TREATMENT

SHOOTING OR ACIDIZING

(Other) TEMPORARY ABANDON

(Note: Report results of multiple completion on Well
Completion or Recompletion Report and Log form.)

REPAIRING WELL

ALTERING CASING

ABANDONMENT*

X

17. DESCRIBE PROPOSED OR COMPLETED OPERATIONS (Clearly state all pertinent details, and give pertinent dates, including estimated date of starting any proposed work. If well is directionally drilled, give subsurface locations and measured and true vertical depths for all markers and zones pertinent to this work.)

TA & HOLD WELL BORE FOR FIELD BLOW DOWN.

6-9-89 MIRU DDP. SDON

6-10-89 R.O. RU Hot Oiler, pump 60 BPW down casing to kill well. N/D W/H N/U BOP
POH w/tbg. S.N., P.N. and MA.

6-14-89 R.O. RIH w/Hyd set CIBP to 6030'. Set Bridge Plug. Circulate down tubing
back of casing 100 barrels 8.6# brine w/WT675 chemical. Shut-in casing
press up to 500# air working out of casing. Bled off. Press back up to 500#.
Held for 25 minutes. POH w/tbg. ND BOP N/U W/H. Left one jt 2-3/8" tubing
on wrap around. Chart attached. RDCL.

CIBP set @ 6030' above Pengo tool which had been previously squeezed. Tool was
@ 6034'.

18. I hereby certify that the foregoing is true and correct

SIGNED

TITLE Services Supervisor

DATE 7/6/89

(This space for Federal or State office use)

APPROVED BY

TITLE

DATE

CONDITIONS OF APPROVAL, IF ANY:

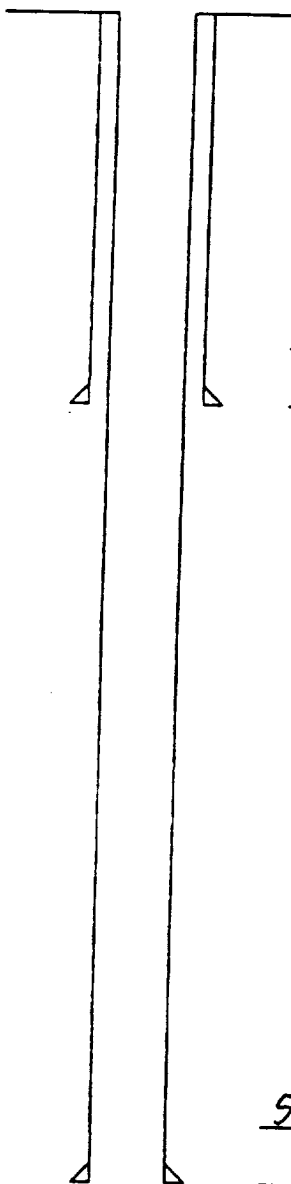
12 MONTH PERIOD

7/14/90

*See Instructions on Reverse Side

SJS

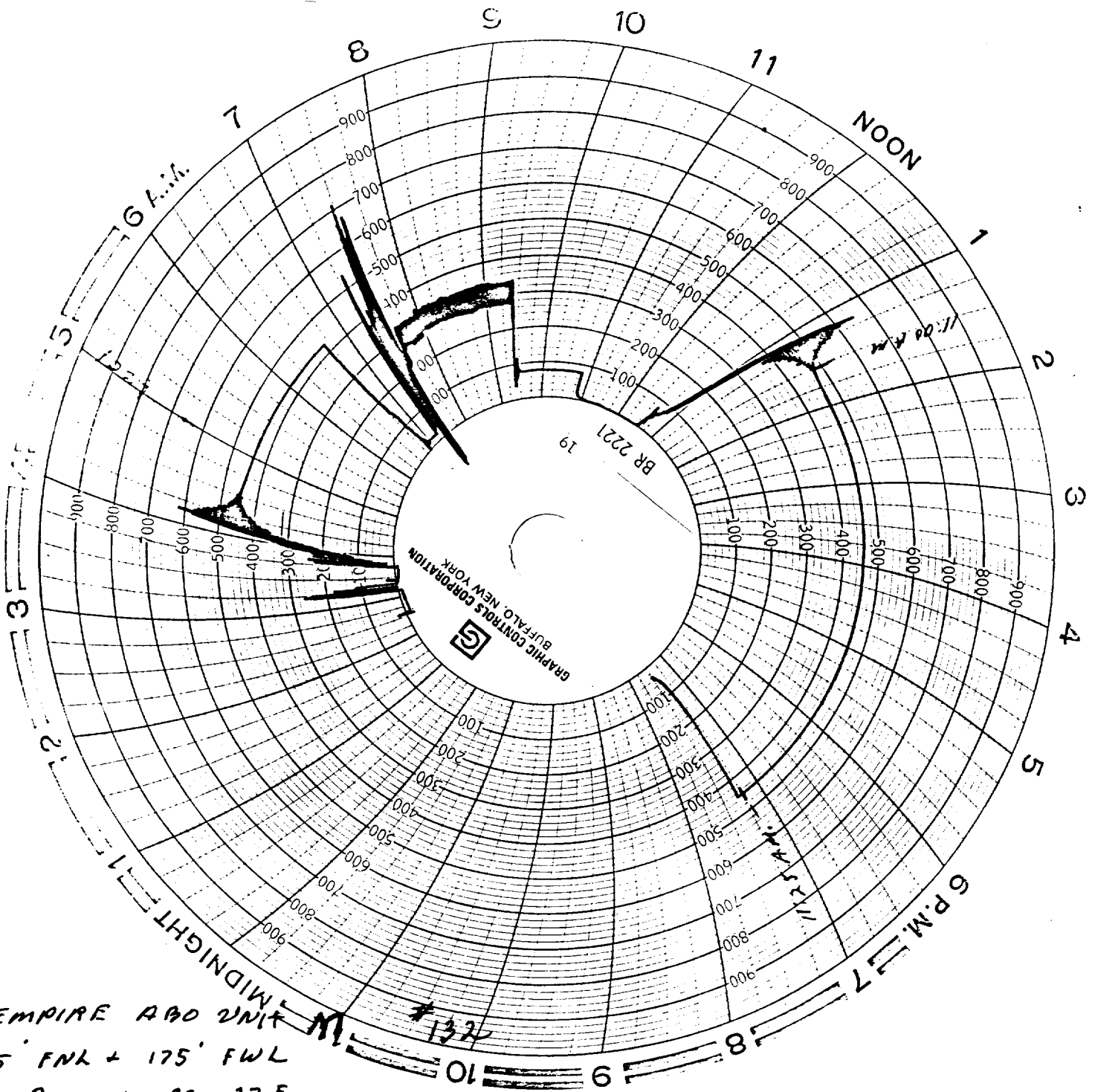
FIELD	OPERATOR	DATE
EMPIRE ABO	ARCO OIL & GAS CO	5-14-89
LEASE	WELL NO.	LOCATION
EMPIRE ABO UNIT M-18	132	625' FNL + 175' FNL UNIT D 11-185-27E



8 5/8 " CASING SET AT 1000 ' WITH 625 SX OF
 _____ CEMENT HOLE SIZE 11 " TOC @ SURFACE

5 1/2 " CASING SET AT 6190 ' WITH 1300 SX OF
 _____ CEMENT HOLE SIZE 7 7/8 " TOC @ SURFACE

TOTAL DEPTH 6200 '
 PERFS 6090' TO 6100'



EMPIRE ABO UNIT
625' FNK + 175' FWL
UNIT D 11-185-27E
EDDT COUNTY

SET CIBP + TEST CSG