

NEW MEXICO OIL CONSERVATION COMMISSION
WELL LOCATION AND ACREAGE DEDICATION PLAT

Form C-102
Supersedes C-128
Effective 1-1-65

All distances must be from the outer boundaries of the Section.

Operator Anadarko Production Co.		Lease 66 S. 117. Ballard Tract 10		Well No. 5
Unit Letter "A"	Section 5	Township 18	Range 29	County Eddy
Actual Footage Location of Well:				
990 feet from the North line and		730 feet from the East line		
Ground Level Elev. 3552.6	Producing Formation Grayburg	Pool Loco Hills Queen Grayburg San Andres		Dedicated Acreage: 40 Acres

1. Outline the acreage dedicated to the subject well by colored pencil or hachure mark on the plat below.
2. If more than one lease is dedicated to the well, outline each and identify the ownership thereof (both as to working interest and royalty).
3. If more than one lease of different ownership is dedicated to the well, have the interests consolidated by communitization, unitization, force-pooling, etc?

RECEIVED

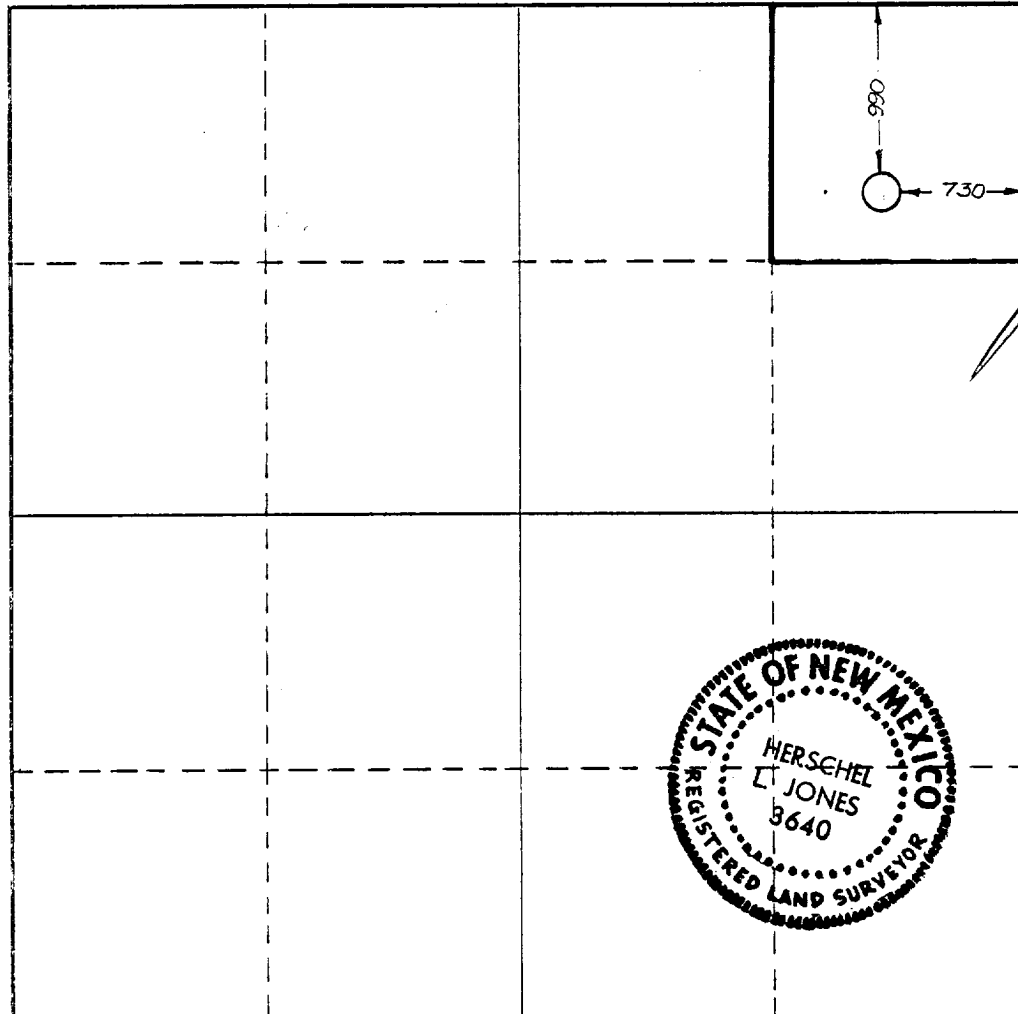
JUN 8 1978

**U.S. GEOLOGICAL SURVEY
ARTESIA, NEW MEXICO**

☒ Yes ☐ No If answer is "yes," type of consolidation **Unitization**

If answer is "no," list the owners and tract descriptions which have actually been consolidated. (Use reverse side of this form if necessary.)

No allowable will be assigned to the well until all interests have been consolidated (by communitization, unitization, forced-pooling, or otherwise) or until a non-standard unit, eliminating such interests, has been approved by the Commission.



CERTIFICATION

I hereby certify that the information contained herein is true and complete to the best of my knowledge and belief.

Name **Jerry E. Buckles**

Position **Area Supervisor**

Company **Anadarko Production**

Date **April 28, 1978**

I hereby certify that the well location shown on this plat was plotted from field notes of actual surveys made by me or under my supervision, and that the same is true and correct to the best of my knowledge and belief.

April 24, 1978

Date Surveyed

Registered Professional Engineer and/or Land Surveyor

Certificate No. **3640**

