

NO. OF COPIES RECEIVED	5
DISTRIBUTION	
SANTA FE	1
FILE	1
U.S.G.S.	2
LAND OFFICE	
OPERATOR	1

RECEIVED
 NEW MEXICO OIL CONSERVATION COMMISSION
 DEC - 6 1978
O. C. C.
ARTESIA, OFFICE

30-015-22755

Form C-101
 Revised 1-1-65

5A. Indicate Type of Lease STATE <input type="checkbox"/> FEE <input checked="" type="checkbox"/>
5. State Oil & Gas Lease No.
7. Unit Agreement Name
8. Farm or Lease Name Waldrip "JY"
9. Well No. 1
10. Field and Pool, or Wildcat Atoka Yeso
12. County Eddy
19. Proposed Depth Approx 3300
19A. Formation Yeso
20. Rotary or C.T. Rotary
21. Elevations (Show whether DF, RT, etc.) 3358' GR
21A. Kind & Status Plug. Bond Blanket
21B. Drilling Contractor LaRue & Muncy
22. Approx. Date Work will start As soon as approved

APPLICATION FOR PERMIT TO DRILL, DEEPEN, OR PLUG BACK	
1a. Type of Work	
b. Type of Well DRILL <input checked="" type="checkbox"/> DEEPEN <input type="checkbox"/> PLUG BACK <input type="checkbox"/>	
OIL WELL <input checked="" type="checkbox"/> GAS WELL <input type="checkbox"/> OTHER <input type="checkbox"/> SINGLE ZONE <input type="checkbox"/> MULTIPLE ZONE <input type="checkbox"/>	
2. Name of Operator Yates Petroleum Corporation	
3. Address of Operator 207 South 4th Street - Artesia, NM 88210	
4. Location of Well UNIT LETTER L LOCATED 2310 FEET FROM THE South LINE AND 330 FEET FROM THE West LINE OF SEC. 34 TWP. 18S RGE. 26E NMPM	
21. Elevations (Show whether DF, RT, etc.) 3358' GR	
21A. Kind & Status Plug. Bond Blanket	
21B. Drilling Contractor LaRue & Muncy	
22. Approx. Date Work will start As soon as approved	

PROPOSED CASING AND CEMENT PROGRAM

SIZE OF HOLE	SIZE OF CASING	WEIGHT PER FOOT	SETTING DEPTH	SACKS OF CEMENT	EST. TOP
9-4/8"	7"	20#	Approx 1120'	550 sx	Circulate
6 1/4"	5 1/2" & 4 1/2"	14# for 9.5#	3300'	175 sx	Circulate

We propose to drill a Yeso and San Andres test. Casing will be set at least 100' below the Artesian Water zone and cemented to the surface. Production casing will be a tapered 5 1/2" and 4 1/2" string and cemented to the surface. If commercial will perforate and Sand Frac for production.

Mud Program: FW Gel & LCM to 1120', fresh water to TD.

BOP Program: BOP's will be installed on the 7" casing and tested.

APPROVAL VALID
 FOR 90 DAYS UNLESS
 DRILLING COMMENCED,

EXPIRES 3-7-79

IN ABOVE SPACE DESCRIBE PROPOSED PROGRAM; IF PROPOSAL IS TO DEEPEN OR PLUG BACK, GIVE DATA ON PRESENT PRODUCTIVE ZONE AND PROPOSED NEW PRODUCTIVE ZONE. GIVE BLOWOUT PREVENTER PROGRAM, IF ANY.

I hereby certify that the information above is true and complete to the best of my knowledge and belief.

Signed Christine J. Janssen Title Geol. Secty Date 12-6-78

(This space for State Use)

APPROVED BY W. A. Gressett TITLE SUPERVISOR, DISTRICT II DATE DEC - 7 1978

CONDITIONS OF APPROVAL, IF ANY:

Cement will be 1120' to
 7" casing

Notify N.M.O.C.C. in sufficient
 time to witness cementing
 the 7"

WELL LOCATION AND ACREAGE DEDICATION PLAT

Form C-128
Supersedes C-128
Effective 1-1-65

All distances must be from the outer boundaries of the Section.

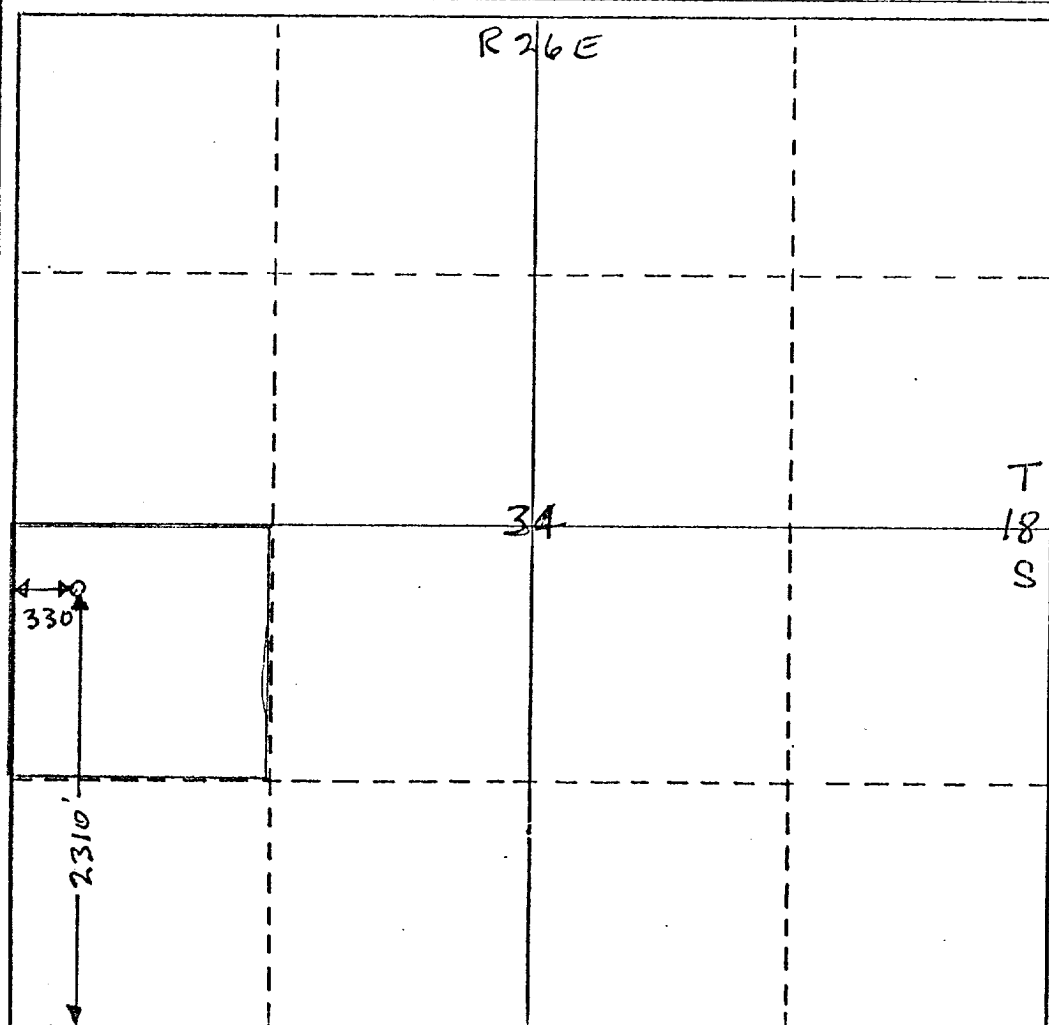
Operator YATES PETROLEUM CORP			Lease WALDRIP JY		Well No. 1
Unit Letter L	Section 34	Township 18-S	Range 26-E	County EDDY	
Actual Footage Location of Well: 2310 feet from the South line and 330 feet from the West line					
Ground Level Elev. 3358	Producing Formation Yeso, S.A.	Pool Und. ATOKA Yeso	Dedicated Acreage 40 Acres		

1. Outline the acreage dedicated to the subject well by colored pencil or hatchure marks on the plat below.
2. If more than one lease is dedicated to the well, outline each and identify the ownership thereof (both as to working interest and royalty).
3. If more than one lease of different ownership is dedicated to the well, have the interests of all owners been consolidated by communitization, unitization, force-pooling, etc?

☐ Yes ☐ No If answer is "yes," type of consolidation _____

If answer is "no," list the owners and tract descriptions which have actually been consolidated. (Use reverse side of this form if necessary.) _____

No allowable will be assigned to the well until all interests have been consolidated (by communitization, unitization, forced-pooling, or otherwise) or until a non-standard unit, eliminating such interests, has been approved by the Commission.



CERTIFICATION

I hereby certify that the information contained herein is true and complete to the best of my knowledge and belief.

Eddie M. Mahfood
Name

EDDIE M. MAHFOOD

Position
ENGINEER

Company
YATES PETROLEUM CORP

Date
12-5-78

I hereby certify that the well location shown on this plat was plotted from field notes of actual surveys made by me or under my supervision, and that the same is true and correct to the best of my knowledge and belief.

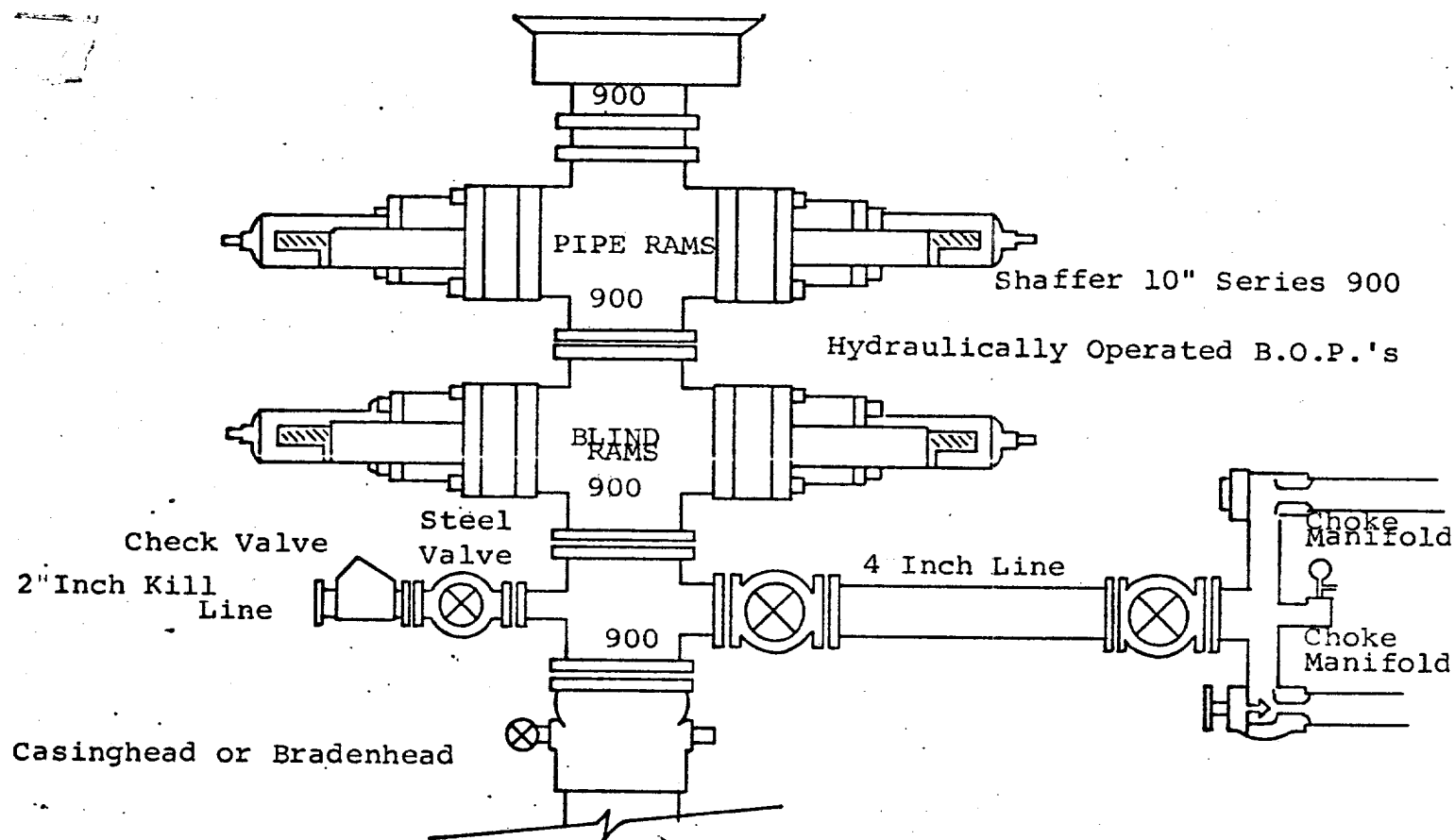
DAN R. REDDY
REGISTERED PROFESSIONAL ENGINEER
NEW MEXICO
#5412

Date Surveyed

Registered Professional Engineer and/or Land Surveyor

Dan R. Reddy

Certificate No.
NM PE&LS #5412



THE FOLLOWING CONSTITUTE MINIMUM BLOWOUT PREVENTER REQUIREMENTS

1. All preventers to be hydraulically operated with secondary manual controls installed prior to drilling out from under casing.
2. Choke outlet to be a minimum of 4" diameter.
3. Kill line to be of all steel construction of 2" minimum diameter.
4. All connections from operating manifolds to preventers to be all steel. hole or tube a minimum of one inch in diameter.
5. The available closing pressure shall be at least 15% in excess of that required with sufficient volume to operate the B.O.P.'s.
6. All connections to and from preventer to have a pressure rating equivalent to that of the B.O.P.'s.
7. Inside blowout preventer to be available on rig floor.
8. Operating controls located a safe distance from the rig floor.
9. Hole must be kept filled on trips below intermediate casing. Operator not responsible for blowouts resulting from not keeping hole full.
10. D. P. float must be installed and used below zone of first gas intrusion.