

NEW MEXICO OIL CONSERVATION COMMISSION  
REQUEST FOR ALLOWABLE  
AND  
AUTHORIZATION TO TRANSPORT OIL AND NATURAL GAS

RECEIVED  
APR 24 1980  
O. C. D.  
ARTESIA, OFFICE

Yates Petroleum Corporation  
207 South 4th Street-Artesia, NM 88210

Well No. 1  
Pool Name Undesignated  
Kind of Lease NM-9538  
State, Federal or Fee Federal

Unit Letter K  
1980  
Feet From The South  
Line and 1980  
Feet From The West

Line of Section 13  
Township 18S  
Range 24E  
County Eddy

Designate Type of Completion - (X)  
Oil Well  
Gas Well  
New Well  
Workover  
Deepen  
Plug Back  
Same Res'v.  
Diff. Res'v.

DATE Spudded 3-5-80  
Date Compl. Ready to Prod. 4-10-80  
Total Depth 8800'  
P.B.T.D. 8358'

Locations (DF, RKB, RT, GR, etc.) 3667' GR  
Name of Producing Formation Atoka  
Top Oil/Gas Pay 8148'

Perforations 8148-8158'  
Tubing Depth 8106'

Depth Casing Shoe 8402'

HOLE SIZE 17 1/2"  
12 1/4"  
7-7/8"

CASING & TUBING SIZE 13-3/8"  
8-5/8"  
4 1/2"  
2-3/8"

DEPTH SET 320'  
1014'  
8402'  
8106'

SACKS CEMENT 325  
600  
1425

TEST DATA AND REQUEST FOR ALLOWABLE  
OIL WELL  
Date First New Oil Run To Tanks  
Date of Test  
Producing Method (Flow, pump, gas lift, etc.)

Length of Test  
Tubing Pressure  
Casing Pressure  
Choke Size

Actual Prod. During Test  
Oil-Bbls.  
Water-Bbls.  
Gas-MCF

GAS WELL  
Actual Prod. Test-MCF/D 2550  
Length of Test 24  
Bbls. Condensate/MMCF  
Gravity of Condensate

Testing Method (pitot, back pr.) Back Pressure  
Tubing Pressure (Shut-in) 2312#  
Casing Pressure (Shut-in) Pkr  
Choke Size 1/2"

CERTIFICATE OF COMPLIANCE  
I hereby certify that the rules and regulations of the Oil Conservation Commission have been complied with and that the information given above is true and complete to the best of my knowledge and belief.

Christine Tomlinson-Geol. Secty.  
4-24-80

OIL CONSERVATION COMMISSION  
APPROVED JUN 10 1980  
BY W. A. Gressett  
SUPERVISOR, DISTRICT II

This form is to be filed in compliance with RULE 1104.  
If this is a request for allowable for a newly drilled or deepened well, this form must be accompanied by a tabulation of the production tests taken on the well in accordance with RULE 110.  
All sections of this form must be filled out completely for all wells on new and recompleted wells.  
Fill out only Sections I, II, III, and VI for changes of owner, well name or number, or transportation of other such change of condition.

NEW MEXICO OIL CONSERVATION DIVISION

P. O. DRAWER "DD"

ARTESIA, NEW MEXICO 88210

RECEIVED

JUN 9 1980

O. C. D.  
ARTESIA, OFFICE

AIR MAIL

NOTICE OF GAS CONNECTION

DATE June 5, 1980

This is to notify the Oil Conservation Division that connection for the  
purchase of gas from the Yates Petroleum Corporation

Operator

Spearman "KQ" Federal Com.

Lease

13-18S-24E, Eddy County

S.T.R.

Well #1 - Unit Letter "K"

Well Unit

*Richard Knob Atoka man*

~~Wildcat (Atoka)~~

Pool

Transwestern

Name of purchaser

was made on

June 4, 1980

Transwestern Pipeline Company

Company

*H. N. Aicklen*

H. N. Aicklen

Representative

Supervisor Gas Purchase Contract Administration

Title

cc: Operator  
Oil Conservation Division - Santa Fe

NEW MEXICO OIL CONSERVATION COMMISSION  
WELL LOCATION AND ACREAGE DEDICATION PLAT

Form C-102  
Supersedes C-128  
Effective 1-1-65

All distances must be from the outer boundaries of the Section.

|                                                |                      |                                         |                         |                       |
|------------------------------------------------|----------------------|-----------------------------------------|-------------------------|-----------------------|
| Operator<br><b>Yates Petroleum Corporation</b> |                      | Lease<br><b>Spearman KQ Federal Com</b> |                         | Well No.<br><b>1</b>  |
| Unit Letter<br><b>K</b>                        | Section<br><b>13</b> | Township<br><b>18South</b>              | Range<br><b>24 East</b> | County<br><b>Eddy</b> |

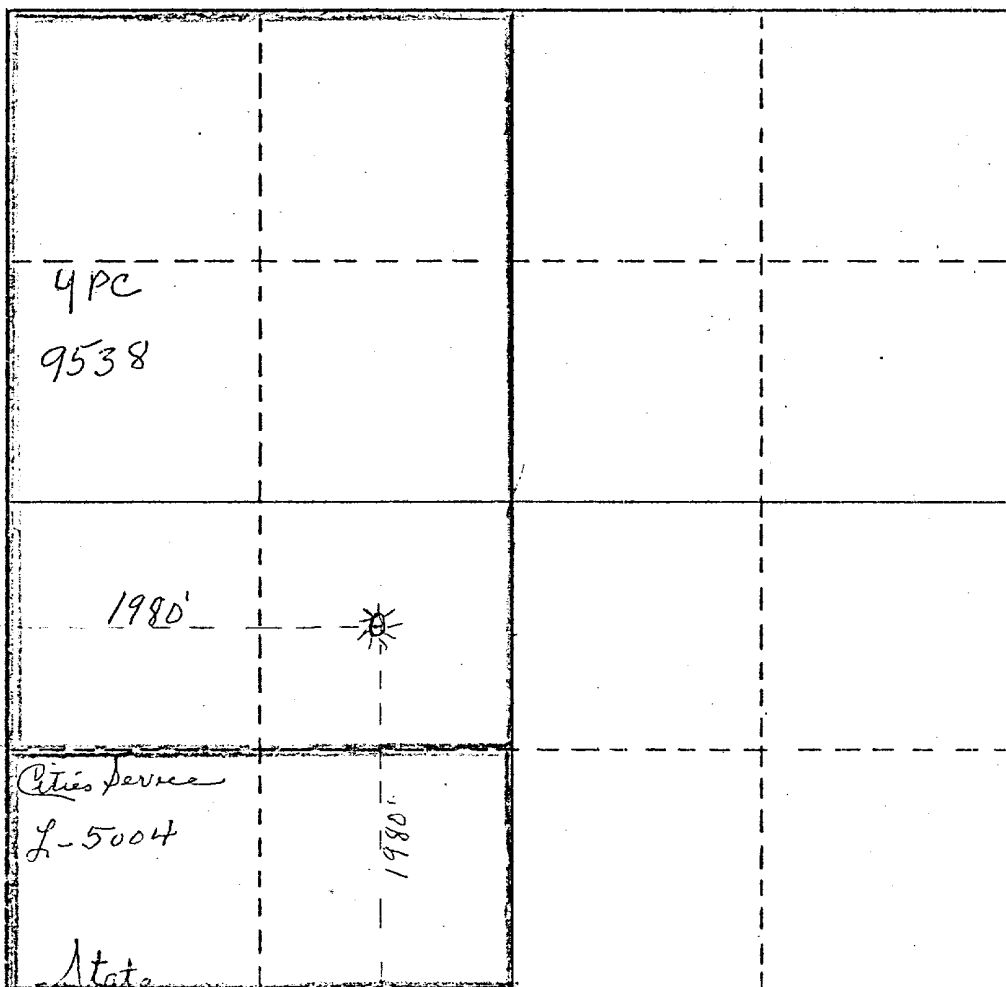
|                                                                                                                                |                                     |                                                         |                                  |       |
|--------------------------------------------------------------------------------------------------------------------------------|-------------------------------------|---------------------------------------------------------|----------------------------------|-------|
| Actual Footage Location of Well:<br><b>1980</b> feet from the <b>South</b> line and <b>1980</b> feet from the <b>West</b> line |                                     |                                                         |                                  |       |
| Ground Level Elev.<br><b>3666.8</b>                                                                                            | Producing Formation<br><b>Atoka</b> | Pool Undesignated<br><b>Richard Knob Atoka - Morrow</b> | Dedicated Acreage:<br><b>320</b> | Acres |

- Outline the acreage dedicated to the subject well by colored pencil or hachure marks on the plat.
- If more than one lease is dedicated to the well, outline each and identify the ownership thereof (both as to working interest and royalty).
- If more than one lease of different ownership is dedicated to the well, have the interests of all owners been consolidated by communitization, unitization, force-pooling, etc?

☒ Yes ☐ No If answer is "yes," type of consolidation Being Communitized

If answer is "no," list the owners and tract descriptions which have actually been consolidated. (Use reverse side of this form if necessary.)

No allowable will be assigned to the well until all interests have been consolidated (by communitization, unitization, forced-pooling, or otherwise) or until a non-standard unit, eliminating such interests, has been approved by the Commission.



CERTIFICATION

I hereby certify that the information contained herein is true and complete to the best of my knowledge and belief.

*Eddie M. Mahfood*  
Name

Eddie M. Mahfood

Position  
Engineer

Company  
Yates Petroleum Corporation

Date  
4-30-80

I hereby certify that the well location shown on this plat was plotted from field notes of actual surveys made by me or under my supervision, and that the same is true and correct to the best of my knowledge and belief.

Refer to Original Plat

Date Surveyed  
Dated 2-8-79

Registered Professional Engineer and/or Land Surveyor

Certificate No.