

NO. OF COPIES RECEIVED	5
DISTRIBUTION	
SANTA FE	/
FILE	/
U.S.G.S.	2
LAND OFFICE	
OPERATOR	/

NEW MEXICO OIL CONSERVATION COMMISSION

RECEIVED

MAR 9 - 1979

O. C. C.  
ARTESIA, OFFICE

30-015-22870

Form C-101  
Revised 1-1-55

APPLICATION FOR PERMIT TO DRILL, DEEPEN, OR PLUG BACK			
1a. Type of Work		7. Unit Agreement Name	
b. Type of Well DRILL <input checked="" type="checkbox"/> DEEPEN <input type="checkbox"/> PLUG BACK <input type="checkbox"/> OIL WELL <input checked="" type="checkbox"/> GAS WELL <input type="checkbox"/> OTHER <input type="checkbox"/> SINGLE ZONE <input checked="" type="checkbox"/> MULTIPLE ZONE <input type="checkbox"/>		8. Farm or Lease Name Wright JA	
2. Name of Operator Yates Petroleum Corporation		9. Well No. 4	
3. Address of Operator 207 S. 4th Street, Artesia, New Mexico 88210		10. Field and Pool, or Wildcat Atoka Yeso	
4. Location of Well UNIT LETTER F LOCATED 1650 FEET FROM THE North LINE AND 1650 FEET FROM THE West LINE OF SEC. 34 TWP. 18S RGE. 26E NMPM		12. County Eddy	
19. Proposed Depth Approx. 3150'		19A. Formation Yeso	
20. Rotary or C.T. Rotary		21. Elevations (Show whether DF, RT, etc.) 3361'	
21A. Kind & Status Plug. Bond Blanket		21B. Drilling Contractor LaRue & Muncy	
22. Approx. Date Work will start As soon as approved			

PROPOSED CASING AND CEMENT PROGRAM

SIZE OF HOLE	SIZE OF CASING	WEIGHT PER FOOT	SETTING DEPTH	SACKS OF CEMENT	EST. TOP
9 5/8"	7"	20#	Approx. 1120'	550 sx	circulate
6 1/4"	5 1/2" or 4 1/2"	14# or 9.5#	Approx. 3150'	175 sx	circulate

We propose to drill a Yeso and San Andres test. Casing will be set at least 100' below the Artesian Water Zone and cemented to the surface. Production casing will be a tapered 5 1/2" and 4 1/2" string and cemented to the surface. If commercial, will perforate and stimulate for production.

MUD PROGRAM: FW Gel & LCM to 1120', fresh water to TD.

BOP PROGRAM: BOP's will be installed on the 7" casing and tested.

APPROVAL VALID  
FOR 90 DAYS UNLESS  
DRILLING COMMENCED,

EXPIRES 6-9-79

IN ABOVE SPACE DESCRIBE PROPOSED PROGRAM: IF PROPOSAL IS TO DEEPEN OR PLUG BACK, GIVE DATA ON PRESENT PRODUCTIVE ZONE AND PROPOSED NEW PRODUCTIVE ZONE. GIVE BLOWOUT PREVENTER PROGRAM, IF ANY.

I hereby certify that the information above is true and complete to the best of my knowledge and belief.

Signed Eddie L. Kaufman Title Engineer Date March 8, 1979

(This space for State Use)

APPROVED BY W. A. Gussert TITLE SUPERVISOR, DISTRICT II DATE MAR - 9 1979

CONDITIONS OF APPROVAL, IF ANY:

Cement must be circulated to  
surface behind 7" casing

Notify N.M.O.C.C. in sufficient  
time to witness cementing  
the 7" casing

**NEW MEXICO OIL CONSERVATION COMMISSION**  
**WELL LOCATION AND ACREAGE DEDICATION PLAT**

Form C-102  
 Supersedes C-128  
 Effective 1-1-65

All distances must be from the outer boundaries of the Section.

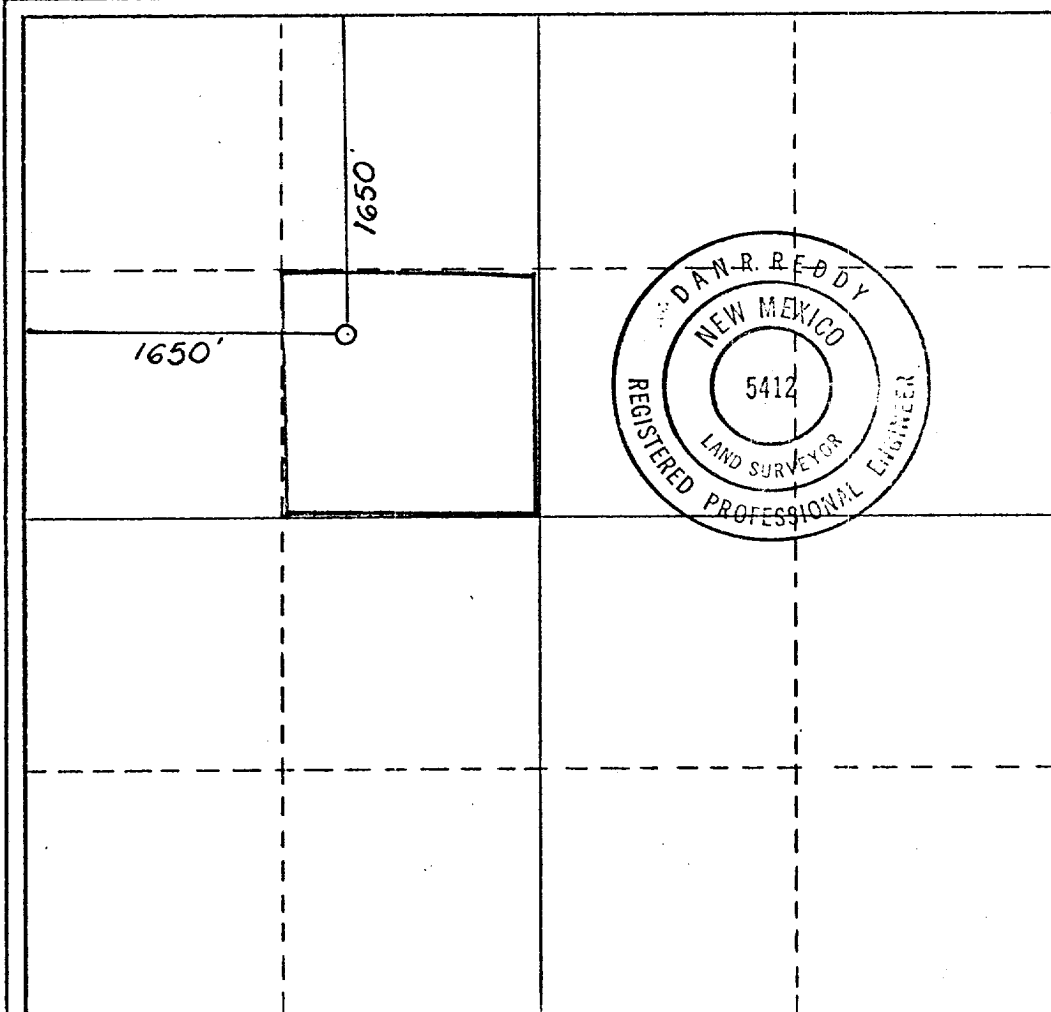
Operator <b>YATES PETROLEUM CORPORATION</b>			Lease <b>Wright JA</b>		Well No. <b>4</b>
Unit Letter <b>F</b>	Section <b>34</b>	Township <b>18 South</b>	Range <b>26 East</b>	County <b>Eddy</b>	
Actual Footage Location of Well:					
<b>1650</b> feet from the <b>North</b> line and		<b>1650</b> feet from the <b>West</b> line			
Ground Level Elev. <b>3361.0</b>	Producing Formation <b>YESO, S.A.</b>	Pool <b>ATOKA (YESO, S.A.)</b>	Dedicated Acreage: <b>40</b> Acres		

1. Outline the acreage dedicated to the subject well by colored pencil or hachure marks on the plat below.
2. If more than one lease is dedicated to the well, outline each and identify the ownership thereof (both as to working interest and royalty).
3. If more than one lease of different ownership is dedicated to the well, have the interests of all owners been consolidated by communitization, unitization, force-pooling, etc?

☐ Yes ☐ No If answer is "yes," type of consolidation \_\_\_\_\_

If answer is "no," list the owners and tract descriptions which have actually been consolidated. (Use reverse side of this form if necessary.) \_\_\_\_\_

No allowable will be assigned to the well until all interests have been consolidated (by communitization, unitization, forced-pooling, or otherwise) or until a non-standard unit, eliminating such interests, has been approved by the Commission.



**CERTIFICATION**

I hereby certify that the information contained herein is true and complete to the best of my knowledge and belief.

*Eddie M. Mahood*  
 Name

**EDDIE M. MAHOOD**  
 Position

**ENGINEER**  
 Company

**YATES PETROLEUM CORP**  
 Date

**3-8-79**

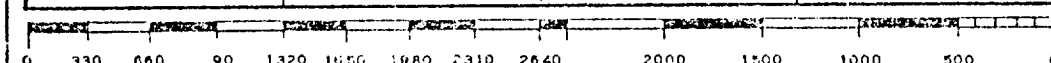
I hereby certify that the well location shown on this plat was plotted from field notes of actual surveys made by me or under my supervision, and that the same is true and correct to the best of my knowledge and belief.

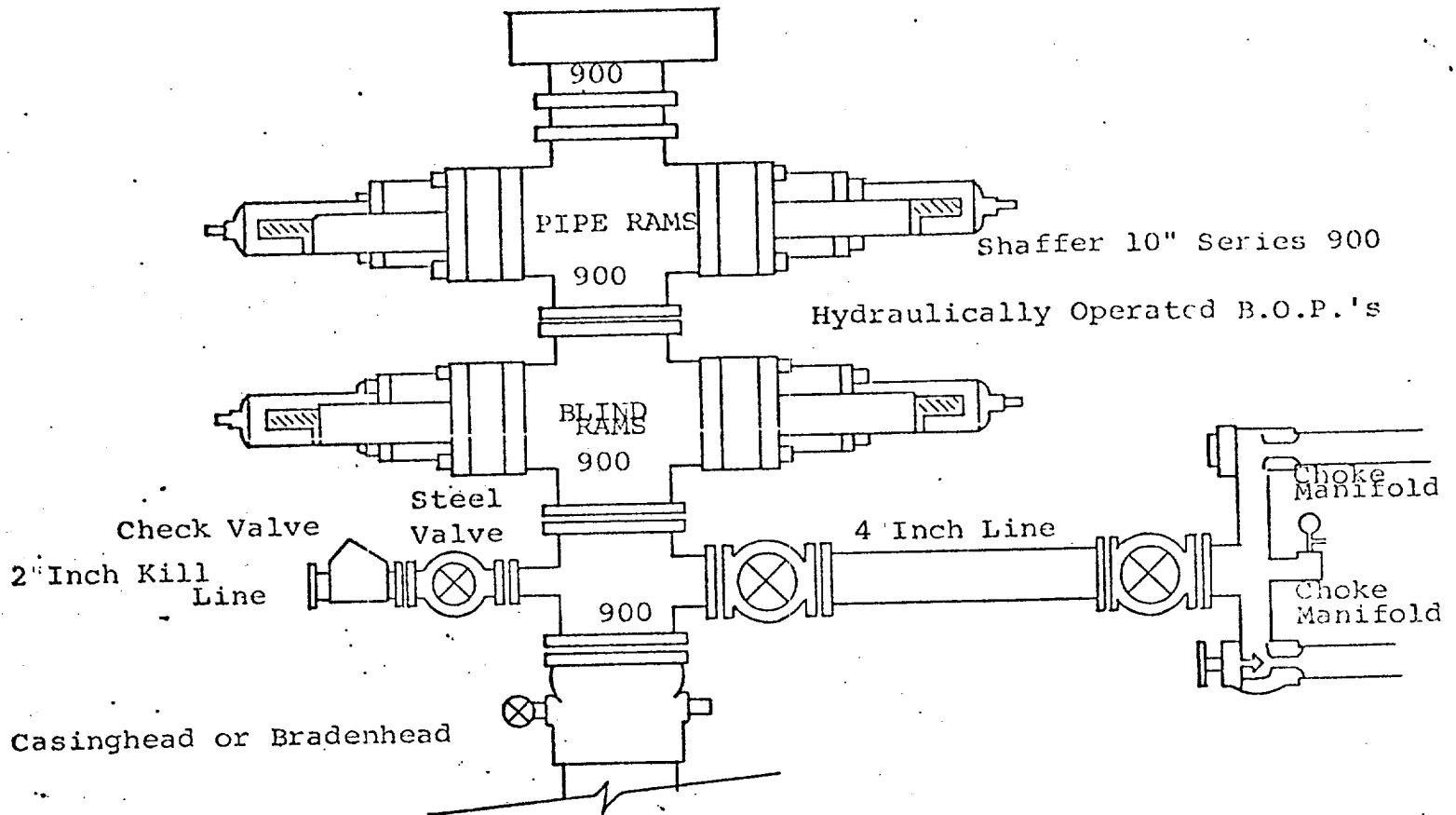
Date Surveyed  
**March 8, 1979**

Registered Professional Engineer and/or Land Surveyor

*Dan R. Reddy*  
 Certificate No.

**New Mexico PE&LS #5412**





# THE FOLLOWING CONSTITUTE MINIMUM BLOWOUT PREVENTER REQUIREMENTS

1. All preventers to be hydraulically operated with secondary manual controls installed prior to drilling out from under casing.
2. Choke outlet to be a minimum of 4" diameter.
3. Kill line to be of all steel construction of 2" minimum diameter.
4. All connections from operating manifolds to preventers to be all steel. hole or tube a minimum of one inch in diameter.
5. The available closing pressure shall be at least 15% in excess of that required with sufficient volume to operate the B.O.P.'s.
6. All connections to and from preventer to have a pressure rating equivalent to that of the B.O.P.'s.
7. Inside blowout preventer to be available on rig floor.
8. Operating controls located a safe distance from the rig floor.
9. Hole must be kept filled on trips below intermediate casing. Operator not responsible for blowouts resulting from not keeping hole full.
10. D. P. float must be installed and used below zone of first gas intrusion.