

UNITED STATES
DEPARTMENT OF THE INTERIOR
GEOLOGICAL SURVEYSUBMIT IN TRIPLICATE*
(Other instr. is on
reverse)Form approved.
Budget Bureau No. 42-R1425.

30-015-23073

5. BASIS OF LOCATION AND DEPTH, NO.

NM-025503

6. IF INDIAN, ALLOTTEE OR TRIBE NAME

NOV 26 1979

7. UNIT AGREEMENT NAME

C. C. C.

8. FARM OR LEASE NAME

Ginsberg Federal

9. WELL NO.

#15

10. FIELD AND TOOL, OR WILDCAT

d Shugart y-5A

11. SEC., T., R., M., OR B.LK.
AND SURVEY OR AREA

u-l-a Sec. 35, T.18S, R.30E

12. COUNTY OR PARISH

Eddy

New Mexico

17. NO. OF ACRES ASSIGNED
TO THIS WELL

40

20. ROTARY OR CABLE TOOL

Rotary

22. APPROX. DATE WORK WILL START

November 21, 1979

1a. TYPE OF WORK

DRILL ☒DEEPEN ☐PLUG BACK ☐

b. TYPE OF WELL

OIL
WELL ☒GAS
WELL ☐

OTHER

SINGLE
ZONE ☐MULTIPLE
ZONE ☐

2. NAME OF OPERATOR

Hanson Oil Corporation

3. ADDRESS OF OPERATOR

P. O. Box 1515, Roswell, New Mexico, 88201

4. LOCATION OF WELL (Report location clearly and in accordance with any State requirements.)*

At surface

990' FEL & 330' FNL, NE/4 NE/4 Sec. 35, T.18S, R.30E

At proposed prod. zone

990' FEL & 330' FNL

14. DISTANCE IN MILES AND DIRECTION FROM NEAREST TOWN OR POST OFFICE*

6 miles south of Loco Hills, New Mexico

15. DISTANCE FROM PROPOSED*

LOCATION TO NEAREST
PROPERTY OR LEASE LINE, FT.
(Also to nearest drig. unit line, if any)

330'

16. NO. OF ACRES IN LEASE

800

18. DISTANCE FROM PROPOSED*

TO NEAREST WELL, DRILLING COMPLETED,
OR APPLIED FOR, ON THIS LEASE, FT.

1302'

19. PROPOSED DEPTH

3600'

21. ELEVATIONS (Show whether DF, RT, GR, etc.)

3428.7' G.L.

23.

PROPOSED CASING AND CEMENTING PROGRAM

SIZE OF HOLE	SIZE OF CASING	WEIGHT PER FOOT	SETTING DEPTH	QUANTITY OF CEMENT
11"	8-5/8"	24#	710'	200 sx circ.
7-7/8"	5-1/2"	14#	3600'	200 sx

It is proposed to drill the above captioned well to a depth of 3600' or a depth sufficient to test the Grayburg formation. If oil or gas in commercial quantities is found, the well will be perforated and stimulated as conditions require. B.O.P. will be used during drilling and completion operations.

RECEIVED
NOV 15 1979
U.S. GEOLOGICAL SURVEY
ARTESIA, NEW MEXICO

IN ABOVE SPACE DESCRIBE PROPOSED PROGRAM: If proposal is to deepen or plug back, give data on present productive zone and proposed new productive zone. If proposal is to drill or deepen directionally, give pertinent data on subsurface locations and measured and true vertical depths. Give blowout preventer program, if any.

24.

SIGNED

A. J. Deane

TITLE

Vice-President, Drilling & Production

DATE 11-14-79

(This space for Federal or State office use)

PERMIT NO.

APPROVAL DATE

11-19-79

APPROVED BY

TITLE

DATE

CONDITIONS OF APPROVAL, IF ANY:

*See Instructions On Reverse Side

NEW MEXICO OIL CONSERVATION COMMISSION
WELL LOCATION AND ACREAGE DEDICATION PLAT

Form No. 1
Supersedes Form 128
1-1-77

All distances must be from the outer boundaries of the Section

Operator HANSON OIL CORP.		Lease Ginsberg Fed.		Section 15	
Plot Letter A	Section 35	Range 18 South	Meridian 30 East	County Eddy	
Actual Electric Location of Well: 330 feet from the North line and 990 feet from the East line					
Ground Level Elev. 3428.7	Producing Formation Grayburg	Well Name und. Shugart Y-SA-S		Well Number 40	

- Outline the acreage dedicated to the subject well by colored pencil or hashure marks on the plot below.
 - If more than one lease is dedicated to the well, outline each and identify the ownership (with as to working interest and royalty).
 - If more than one lease of different ownership is dedicated to the well, have the interests consolidated by communitization, unitization, force-pooling, etc.
- ☐ Yes ☐ No If answer is "yes," type of consolidation _____

RECEIVED

NOV 26 1979

O. C. C.

ARTESIA, OFFICE

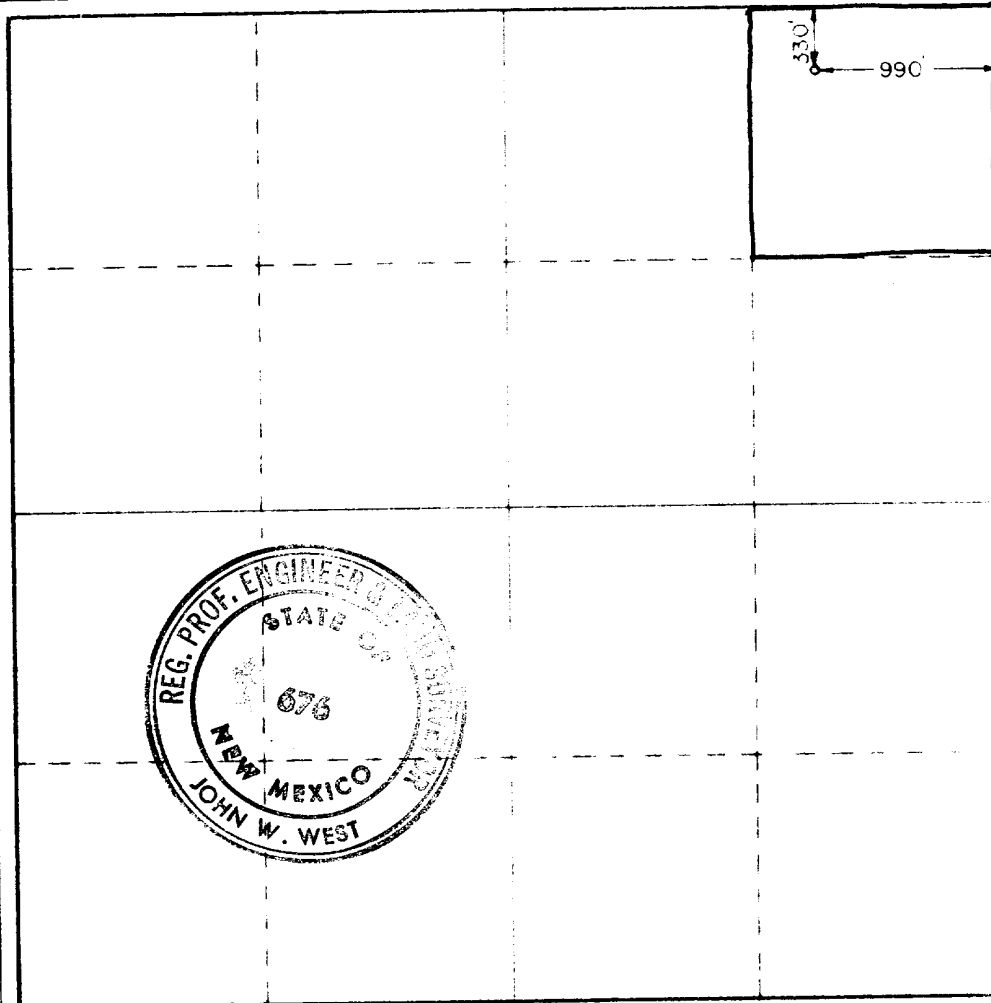
RECEIVED

NOV 15 1979

U.S. GEOLOGICAL SURVEY
ARTESIA, NEW MEXICO

If answer is "no," list the owners and tract descriptions which have actually been consolidated (Use reverse side of this form if necessary).

No allowable will be assigned to the well until all interests have been consolidated (by communitization, unitization, forced-pooling, or otherwise) or until a non-standard unit, eliminating such interests, has been approved by the Commission.



CERTIFICATION

I hereby certify that the information furnished herein is true and complete to the best of my knowledge and belief.

A. J. Deans
A. J. Deans

Vice-Pres., Drilling & Prod.

November 14, 1979

I hereby certify that the well location shown on this plat was plotted from field notes of actual surveys made by me or under my supervision and that the same is true and correct to the best of my knowledge and belief.

November 7, 1979

John W. West
John W. West
Patrick A. Romero
Ronald J. Eidson

676
6668
3239

0 330 660 990 1320 1650 1980 2310 2640 2970 3300 3630 3960 4290 4620 4950 5280 5610 5940 6270 6600 6930 7260 7590 7920 8250 8580 8910 9240 9570 9900



United States Department of the Interior

GEOLOGICAL SURVEY

P. O. Box 26124
Albuquerque, New Mexico 87125

RECEIVED

NOV 26 1979

D. C. C.
ARTESIA, OFFICE

NOV 19 1979

Hanson Oil Corporation
P. O. Box 1515
Roswell, New Mexico 88201

HANSON OIL CORPORATION
Ginsberg Fed No. 15
330 FNL 990 FEL Sec. 35 T.18S R.30E
Eddy County Lease No. NM 025503

Gentlemen:

Above Data Required on Well Sign

Your APPLICATION FOR PERMIT TO DRILL the above-described well in the Secretary's Oil-Potash Area to a depth of 3,000 feet to test the Grayburg is hereby approved subject to compliance with the OIL AND GAS OPERATING REGULATIONS (30 CFR 221) and the following conditions:

1. Drilling operations authorized are subject to compliance with the attached General Requirements for Oil and Gas Operations on Federal Leases, dated July 1, 1978.
2. Prior to commencing construction of road, pad, or other associated developments, operator will provide the dirt contractor with a copy of the Surface Use Plan and these Conditions of Approval including the attached General Requirements.
3. Submit a Daily Report of Operations from spud date until the well is completed and the Well Completion Report (form 9-330) is filed. The report should not be less than 8" x 5" in size and each page should identify the well.
4. All permanent above-ground structures and equipment shall be painted in accordance with the attached Painting Guidelines. The color used should simulate Sandstone Brown (Federal Standard No. 595A, color 20318 or 30318).
5. Before drilling below the 8-5/8" casing, the blowout preventer assembly will consist of a minimum of one annular type and two ram type preventers.
6. Notify the Survey in sufficient time to witness the cementing of the 8-5/8" and 5-1/2" casing.



- 7.. Cement behind the 8-5/8" casing must be circulated.
8. Special stipulations: Use existing ranch road to location.
Center line stakes are offset center
five (5) feet.
9. Please have anyone contacting the Survey in regard to this well to
identify the well with all of the information required above for
the well sign.

Sincerely yours,

(ORIG. SGD.) JAMES W. SUTHERLAND

Area Oil and Gas Supervisor

Enclosure

cc:

Regional Manager, Denver
Mining Branch (2)
BLM, Roswell (w/cy Notice)
NMOCD, Artesia (2) (w/2 cys Notice)
Artesia
Roswell (w/cy Notice)
Area (potash)
Area (chrono.)
District (potash)
District (chrono)

APPLICATION FOR DRILLING

GINSBERG FEDERAL #15

EDDY COUNTY, NEW MEXICO

In conjunction with permitting subject well for drilling in Section 35, T.18S, R.30E, Hanson Oil Corporation submits the following 10-points of pertinent information in accordance with United States Geological Survey letter of July 1, 1976:

1. The surface formation is Pleistocene and Holocene.
2. The estimated tops geologic markers are as follows:

Anhydrite	499'
Salt	669'
Base of Salt	1667'
Yates	1867'
Queen	2903'
Penrose	3117'
Grayburg	3316'
T.D.	3600'

3. The depth at which water is expected to be encountered is at 235'.
The depth at which oil and gas is expected to be encountered is at 1867'.

4. Casing Program:

24# K-55, 8-5/8" to 710' (New)
14# K-55, 5-1/2" to 3600' (New)

5. Blowout preventer: Ram type, series 900 with double hydraulic 12' rams. This is a Schaffer blowout preventer (300# working pressure) with a Hydrill closing unit. The fill, kill and choke lines are indicated on the blowout preventer specification sheet Exhibit #7.

6. Circulating Medium: Earthen pits will be used to hold mud and cuttings and the drilling fluid as follows:

SURFACE: (0-710')

Drill and set surface casing with a Hydrogel - Lime slurry (40 - 50 Sec./Qt. viscosity).

OPEN HOLE: (710' - T.D.)

Drill out from under surface casing with brine water to minimize leeching Salt Section. We suggest circulating the reserve pit to minimize solids build-up. At Top of Queen we suggest coming back into working pits and mudding up with Brinegel and Loid for a mud with the following properties:

Weight	10.1 - 10.3 ppg
Viscosity	34 - 36 sec
Fluid Loss	10 - 12 ml

A fluid with the above properties should be adequate to provide safe logging and casing operations.

APPLICATION FOR DRILLING (Continued)

GINSBERG FEDERAL #15

EDDY COUNTY, NEW MEXICO

7. Auxiliary Equipment: Kelly cocks and flats at the bit will not be used in drilling the subject well. The mud system (pit levels) will be monitored visually by the rig crew. A sub with a full opening valve in good working order for stabbing into the drill pipe will be available on the drilling rig floor.
8. Testing and Logging Program: No D.S.T.'s will be taken. No cores are planned. Gamma-Ray Caliper and Formation Density Logs will be run from base of surface to T.D.
9. No abnormal bottom hole pressure (BHP) is anticipated. Based on off-setting BHP data, the BHP in the subject well is anticipated to be 1404# at 3600'. This is equivalent to a pressure gradient of .39 lbs. per foot of depth.
10. The anticipated starting date is November 21, 1979, with completion of drilling operations on November 27, 1979. Stimulating and completion of well would be immediately after drilling operations are finished.

SURFACE USE AND OPERATIONS PLAN

GINSBERG FEDERAL #15

EDDY COUNTY, NEW MEXICO

RECEIVED
NOV 15 1979
U.S. GEOLOGICAL SURVEY
ARTESIA, NEW MEXICO

The following multipoint requirements and surface use plan is submitted for the subject well by Hanson Oil Corporation:

1. Existing Roads

- A. Proposed well as staked. See Surveyor's Plat.
- B. As shown, the planned well is approximately six (6) miles South of Loco Hills, New Mexico. To reach the planned well take Highway 82 East from Artesia, New Mexico to where Road 31 intersects Highway 82; turn South on Road 31 for 6.7 miles; turn West and continue over existing caliche road for 3½ miles in a Westerly direction; turn South at cattleguard and continue on 500' of access road to location as staked.
- C. Existing Roads: See Exhibit #1
- D. See Exhibit #1
- E. Not applicable
- F. Existing roads will be bladed and watered as is necessary to maintain a useable road.

2. Planned Access Roads: See Exhibit #1

- 1. Width: See Exhibit #5
- 2. Maximum grades: See Exhibit #5
- 3. Turnouts: See Exhibit #1
- 4. Drainage Design: See Exhibit #5
- 5. No culverts will be necessary as only insignificant, widely dispursed drainage could occur across the proposed route. No major cuts or fills will be necessary.
- 6. Surfacing Material: All construction materials will be of local origin and no surface material will be disturbed except for the grading of the actual access road and location.
- 7. Gates are not necessary; cattleguards: See Exhibit #1; no fence cut will be made.
- 8. Planned access road has been center-line flagged.

SURFACE USE AND OPERATIONS PLAN (Continued)

GINSBERG FEDERAL #15

EDDY COUNTY, NEW MEXICO

3. Location of existing wells in a one-mile radius are shown on Exhibit #2.

- (1) Water Wells: None
- (2) Abandoned Wells: Section 35 - See Exhibit #2
- (3) Temporarily abandoned wells: None
- (4) Disposal wells: None
- (5) Drilling wells: None
- (6) Producing wells: Sections 25, 26, 35 & 36 - See Exhibit #2
- (7) Shut-in wells: None
- (8) Injection wells: None
- (9) Monitoring or observation wells for other resources: None

4. Location of existing and/or proposed facilities:

- A. There are existing facilities within a one-mile radius from location owned or controlled by Hanson Oil Corporation - See Exhibit #2
- B. In the event production is established, Hanson Oil Corporation will build a tank battery on the well pad.
 - (1) Proposed location of tank battery to be on well pad.
 - (2) Dimensions of facilities - See Exhibit #3
 - (3) All construction material will be of local origin and no surface material will be disturbed except those necessary for the actual grading of well pad.
 - (4) The entire tank battery will be surrounded by a 3' ditch and 2½' fire wall to prevent overflow spillage into surrounding drainage areas. The entire tank battery will then be fenced. Any pits left open will be flagged to protect waterfowl if this precautionary measure is deemed necessary by the Wildlife Management.
- C. Rehabilitation of disturbed areas:

If production is established, following completion of tank battery erection, necessary well producing equipment, etc., all pits with the exception of a flare pit, will be filled (after they dry up) and the surrounding location leveled. Disturbed area no longer needed for operations will then be reseeded using as much topsoil as possible and utilizing seed types and quantities as recommended for this area by agronomist and the Bureau of Land Management. All reseeded will be done with a reasonable effort to establish a more attractive soil stabilizing growth of vegetation than what previously existed at the site. Reseeding will take place at the first opportunity following completion of well in accordance with the recommended seasonal periods (late Spring). The unused disturbed area then will be fenced from time of reseeded until grass is established.

SURFACE USE AND OPERATIONS PLAN (Continued)

GINSBERG FEDERAL #15

EDDY COUNTY, NEW MEXICO

5. Location and Type of Water Supply:

- A. Water to be used in drilling the proposed well will be hauled from producing wells in Sec. 29, T.18S, R.31E.
- B. Said water will be transported by truck over improved and proposed access road shown on Exhibit #1.
- C. No water wells are planned to be drilled on the lease in connection with the drilling of the proposed well.

6. Source of Construction Materials:

- A. All construction material will be of local origin and no surface areas will be disturbed except for the actual grading of the road and drilling site.
- B. No construction material will be moved from Federal or Indian land.
- C. Materials such as sand, gravel and stone, if used, will be moved from a private source.
- D. See Exhibit #1.

7. Methods for Handling Waste Disposal:

- (1) Cuttings: Drill cuttings will be accumulated in the earthen reserve pit and after the pit has dried will be bladed into the bottom of the pit and buried.
- (2) Drilling Fluids: The drilling fluids will be pumped out of the reserve pit and disposed of in a more suitable pit, after any oil accumulation in the pit has been removed and hauled in the production facility for recovery.
- (3) Produced Fluids (oil, water): If production is established, oil will be trucked by the purchaser over access road shown on Exhibit #1. Water will be trucked to an approved water disposal system over the same road.
- (4) Sewage: Sewage will be contained in a chemical latrine.
- (5) Trash and garbage will be contained in an earthen pit. See Exhibit #4, and buried following drilling operations. Said pit to be fenced with small mesh wire to prevent wind from scattering trash before being burned or buried.
- (6) Following completion of drilling operations, all pits will be filled (after they dry up) and area surrounding the location leveled.

SURFACE USE AND OPERATIONS PLAN (Continued)

GINSBERG FEDERAL #15

EDDY COUNTY, NEW MEXICO

8. Ancillary Facilities:

No Auxilliary facilities will be constructed.

9. Well Site Layout:

- (1) Cross sections of drill pad - See Exhibit #6
- (2) See Exhibit #4
- (3) See Exhibit #4
- (4) Statement as to whether pits are to be lined or unlined:
Pits will be unlined.

10. Plans for Restoration of Surface:

- (1) Following completion of drilling operations, any oil accumulation in pits will be removed and hauled to a production facility to be recovered. All pits will be filled (after they dry up) and the area surrounding the locaiton leveled. The location will then be graded to conform with the original topography and contours made as are necessary to achieve the same. All waste material will be buried in an earthen pit following completion of operations.
- (2) Reseeding of the drillsite, including access roads, will take place at the first opportunity following completion of operations in accordance with the recommended seasonal seeding periods. All reseedng will be as recommended for this area by agronomist and the Bureau of Land Management.
- (3) Prior to rig release, pits will be fenced and so maintained until clean-up operations are complete. After the location has been leveled and all pits backfilled, said location will be fenced from time of reseedng until grass is established.
- (4) Any oil accumulations in pits shall be removed and hauled to production facility for recovery. In the event it becomes necessary to leave oil in any pit for any reason, we will install overhead flagging.
- (5) Commencement of rehabilitation operations shall begin immediately after rig release and shall continue in a good and workmanlike manner until complete.

11. Other information:

- (1) The area around the drilling site is small sand dunes. The surface supports a sparse growth of grass with a few clumps of cactus.
- (2) There are no other surface use activities planned. The surface at the location is Federally owned.

SURFACE USE AND OPERATIONS PLAN (Continued)

GINSBERG FEDERAL #15

EDDY COUNTY, NEW MEXICO

11. Other Information (Continued):

(3) There are no fresh water wells near the proposed location. No lakes, streams, no occupied dwellings, no known archeological historical or cultural sites in the general area of the location.

12. The Hanson Oil Corporation representative conducting this drilling operation is:

Mr. A. J. Deans
P. O. Box 1515
Roswell, New Mexico 88201

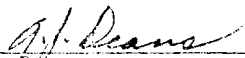
Phone No. (505) 622-7330 - Office
(505) 622-7364 - Home

CERTIFICATION

I hereby certify that I, or persons under my direct supervision have inspected the proposed drillsite and access route; that I am familiar with the conditions which presently exist; that the statements made in this plan are to the best of my knowledge true and correct; and that work associated with the operations proposed herein will be performed by Hanson Oil Corporation and its contractors and subcontractors in conformity with this plan and the terms and conditions under which it is approved.

November 14, 1979

(Date)



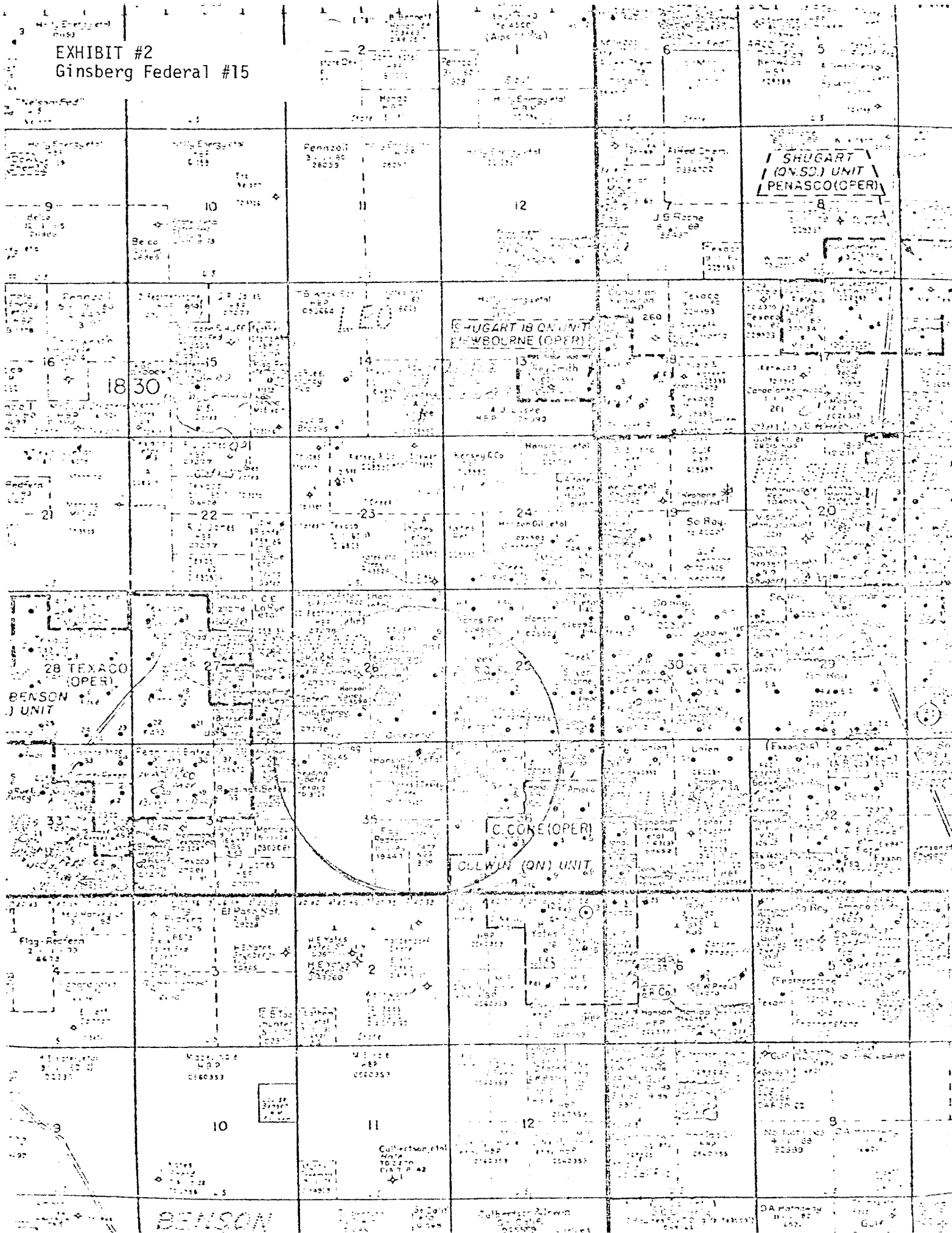
A. J. Deans
Vice-President, Drilling & Production

EXHIBIT #1
Ginsberg Federal #15

Topographic map showing the area around Walters Lake and Hatberrit Lake. The map includes a grid with section numbers (e.g., 20, 21, 22, 23, 24, 25, 26, 27, 28, 29, 30, 31, 32, 33) and elevation contours. Key features include:

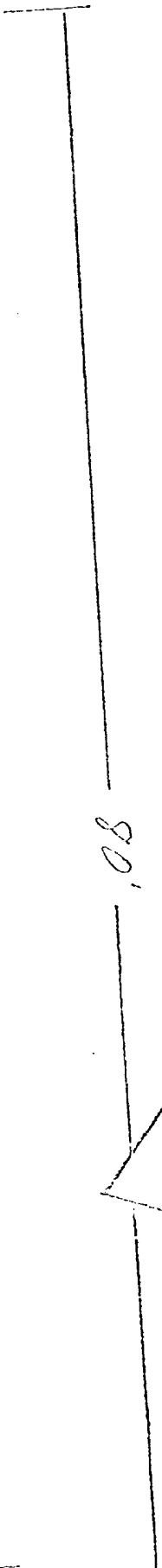
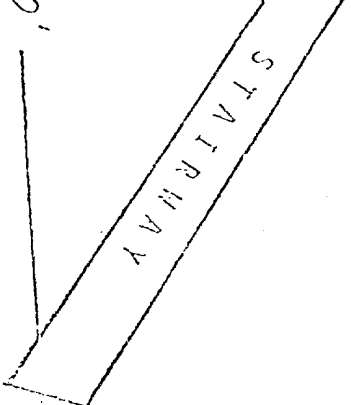
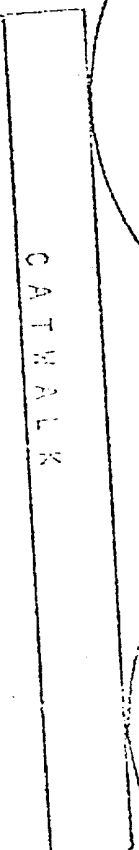
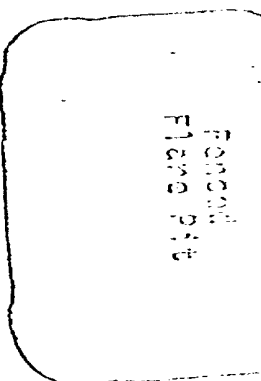
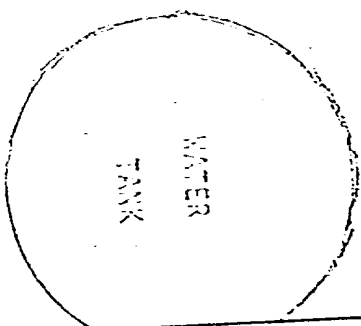
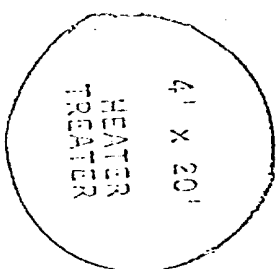
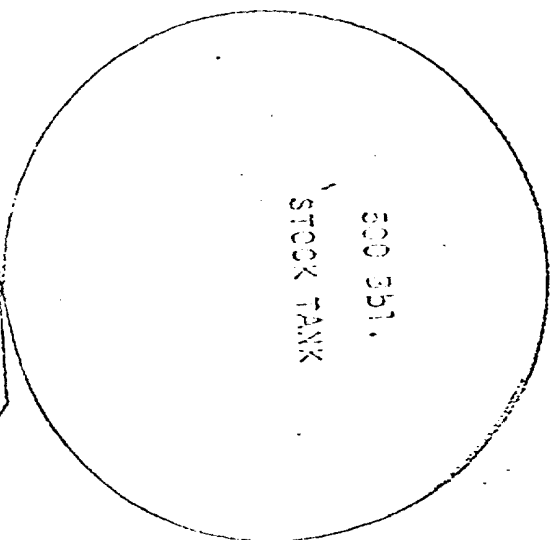
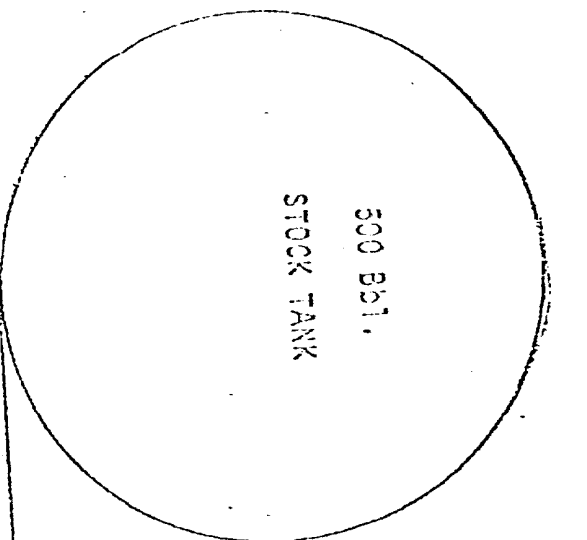
- Walters Lake** (top center)
- Hatberrit Lake** (bottom center)
- CLAYTON** (bottom left)
- Satuna** (bottom center)
- Canyon** (bottom right)
- ST. R. 31** (top right)
- 6.7 miles** (top right)
- 3.5 miles** (middle right)
- 500' OF NEW ROAD** (middle left)
- CATTLE GUARD** (middle left)

EXHIBIT #2
Ginsberg Federal #15



HANSON OIL CORPORATION

LEASE Ginsberg Federal #15



South
END
OF TANK BATTERY

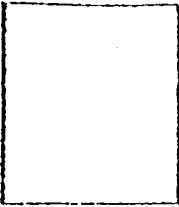
150'

Battery to be surrounded by 3' ditch & 25' Firewall



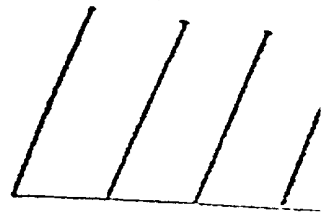
NORTHWEST

TRASH &
BURN PIT



150'

PIPE RACK



PARKING AREA

100'

60'

90'

PIT

PIT

10'

14'

14'

54'

DOG HOUSE

WATER
TANK

HOUSE AND
NORTH

PUMP

PUMP

150'

PIT

FUEL TANK

LITE PLANT

LATRINE



EXHIBIT "4"

HANSON OIL CORPORATION

LEASE Ginsberg Federal #15

HANSON OIL CORPORATION

EXHIBIT "5"

LEASE Ginsberg Federal

WELL #15

CROSS-SECTION OF PLANNED ACCESS ROAD

TOP VIEW

CROSS - SECTION

1st Drainage

EXISTING SURFACE

PLANNED SURFACE AFTER GRADING

IBIT #6

HANSON OIL CORPORATION

LEASE Ginsberg Federal

WELL #15

CROSS SECTION OF DRILLING SITE

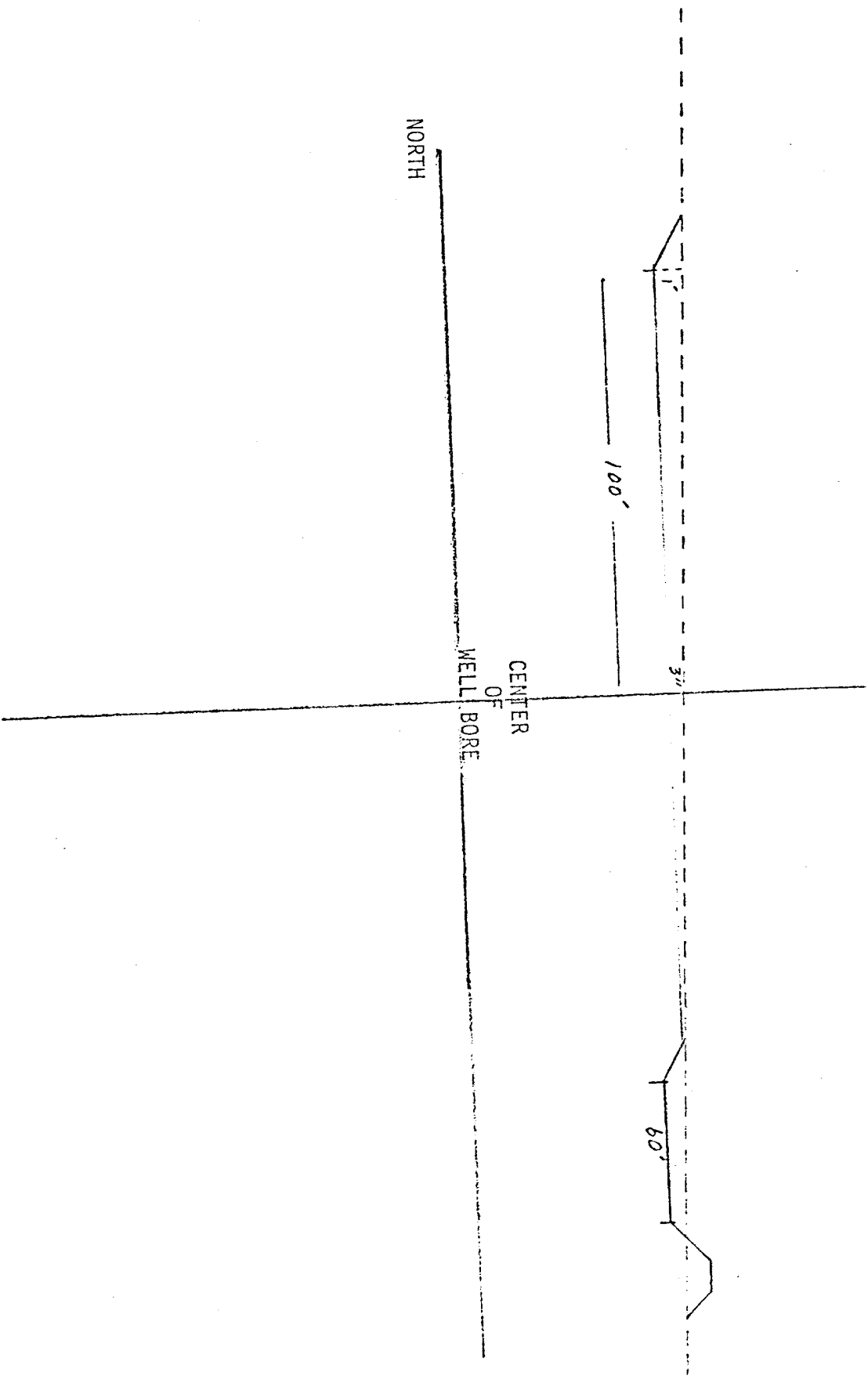
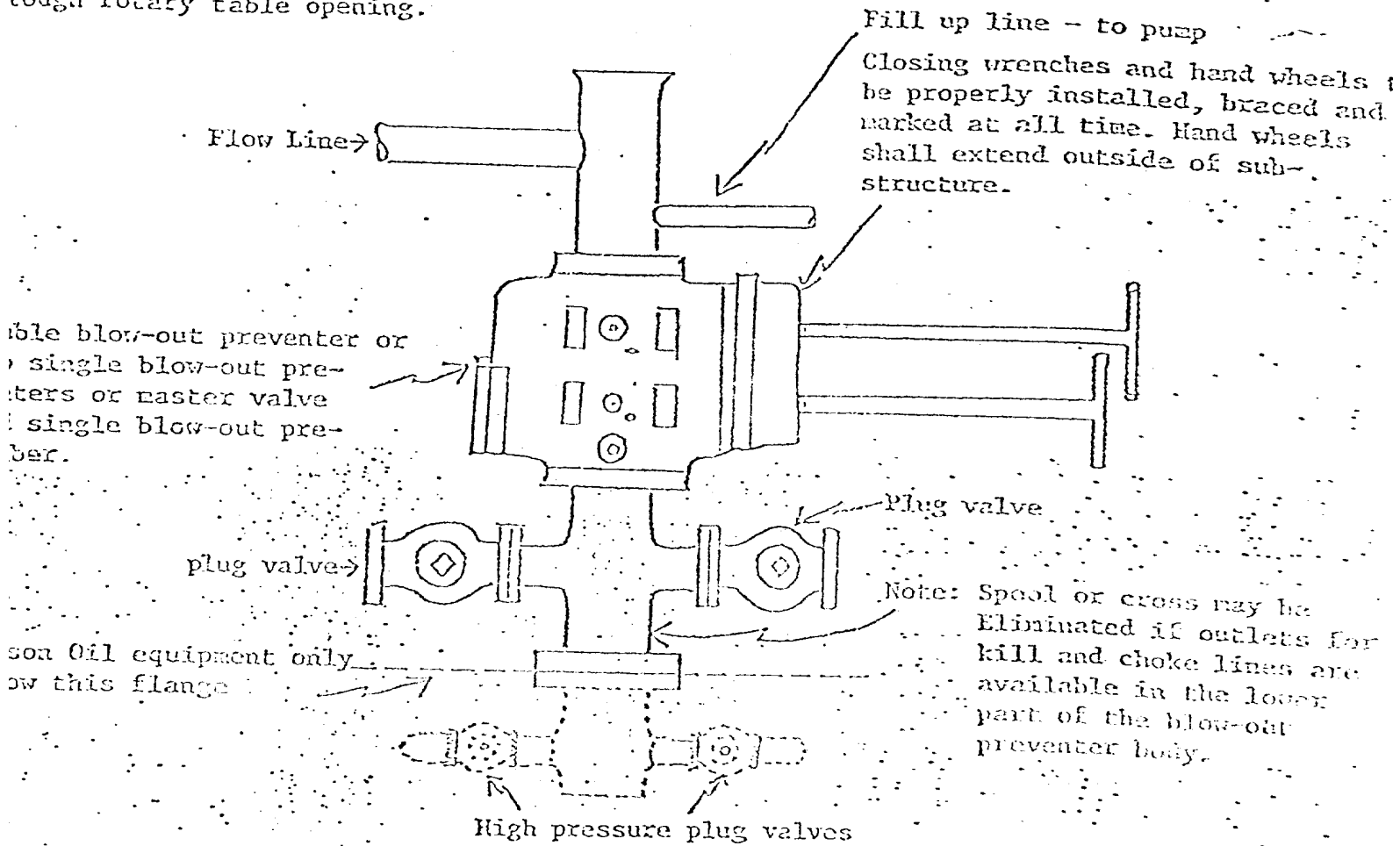


EXHIBIT VII

filling nipple to be so constructed that it can be removed, without use of a welder, through rotary table opening.



NOTE:

drilling use:
Preventer-Blind rams or master valve
on Preventer-Drill pipe rams

running casing use:
Preventer-Casing rams
on Preventer-Blind rams or master valve

1. Blow-out preventers, master valve and all fittings must be in good condition 2,000% W.P. (4,000 P.S.I. test) minimum.
2. Equipment through which bit must pass shall be as large as inside diameter of the casing that is being drilled through.
3. Nipple above blow-out preventer shall be same size as casing being drilled through.
4. All fittings to be flanged.
5. Safety Valve (2" minimum opening) with sub or connection to drill pipe on rig floor at all times.

Archaeological Clearance Report
for
Hanson Oil Corporation

Ginsberg Federal Well No. 15

Prepared

By

Charles A. Aylward

and

J. Loring Haskell

Submitted

By

Dr. J. Loring Haskell
Principal Investigator
New Mexico Archaeological Services, Inc.
Carlsbad, New Mexico

12 November 1979

Permit No. 79-NM-166

Introduction

On 9 November 1979, New Mexico Archaeological Services, Inc., (NMAS), Carlsbad, undertook for Hanson Oil Corporation, an archaeological reconnaissance of federal lands administered by the Bureau of Land Management in Eddy County, New Mexico. Reconnoitered areas will be impacted by the construction of a drill location and an associated access road. This project was advanced by Mr. A.J. Deans, Hanson Oil Corporation, Roswell, and administered by Dr. J. Loring Haskell, Principal Investigator, NMAS, Inc. This reconnaissance was undertaken by Mr. Charles A. Aylward, Research Associate, NMAS.

Survey Technique

For this investigation, Hanson Oil Corporation's proposed location was reconnoitered for evidence of man's past activities by walking it in a series of 20 ft wide, close interval (15° or less), zigzag transects. In addition, an added zone embracing 20 ft on each side of the staked 400 X 400 ft location, and hence lying outside the bounds of the proposed work area, was reconnoitered by a similar means as was the access road. Methodologically, this procedure served to promote optimal conditions for the visual examination of areas to be impacted by construction-related activities.

Ginsberg Federal Well No. 15

Location

The proposed location will measure 400 X 400 ft on federal lands and will be situated 330 ft from the north line and 990 ft from the east line of:

Section 35, T18S, R30E, NMPM, Eddy County, NM

Thus it will be situated in the:

NE $\frac{1}{4}$ NE $\frac{1}{4}$, Section 35, T18S, R30E, NMPM, Eddy County, NM

The associated access road will measure 12 X 300 ft and will be situated in the:

NE $\frac{1}{4}$ NE $\frac{1}{4}$, Section 35, T18S, R30E, NMPM, Eddy County, NM

SE $\frac{1}{4}$ SE $\frac{1}{4}$, Section 26, T18S, R30E, NMPM, Eddy County, NM

Map Reference: USGS CLAYTON BASIN QUADRANGLE, 15 Minute Series, 1942.

Terrain

Topographically, the proposed work area is situated within the Loco Hills District. As a whole, this district is marked by coppice-type dune features dating from Pleistocene- and Holocene times. To the south, the horizon is crenulated by a prominent ridge. Associated soil individuals consist of poorly compacted sandy loams and loamy sands belonging to the Typic Torriossament subgroup. Inclusions are limited to angular caliche gravels and cobbles. This landform is subject to sheetwash and gullying; drainage is toward the south to south-southwest.

Floristics

Pedons support an overstory of mixed Prosopis juliflora, Condalia ericoides, Larrea tridentata, and Yucca elata. Gutierrezia sarothrae ranges in frequency from common to the point where it assumes dominance. Commonly observed forbs include: Euphorbia sp., Solanum elaeagnifolium, Abutilon sp., Xanthium sp., Croton sp., Astragalus sp., Cercium sp., and an unidentified member of the Chenop-Asteraceae. Well represented

grasses include: Bouteloua curtipendula, Setaria macrostachys, Panicum sp., Sporobolus sp., and Tridens pulchellus.

Cultural Resources

No archaeological sites or isolated manifestations were recorded during this reconnaissance. Widely scattered burned- and fire-cracked caliche cobbles were noted in the northeastern corner of the staked location. Cultural resources were not associated with them. They are situated in the:

NW1/4NE1/4, Section 35, T18S, R30E, NMPM, Eddy County, NM

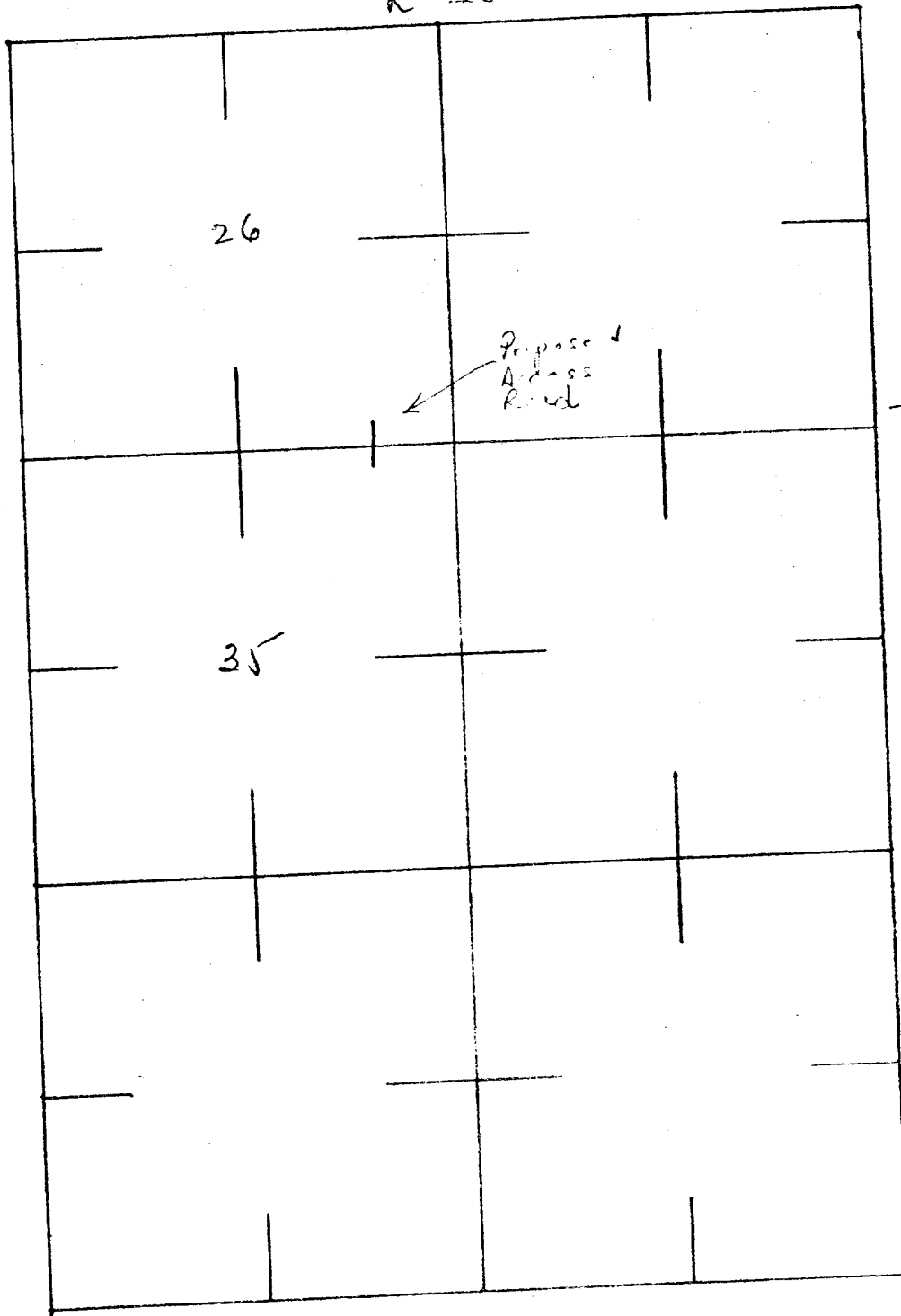
UTM: Zone 13, N3,619,450; E599,675

Map Reference: USGS CLAYTON BASIN QUADRANGLE, 15 Minute Series, 1942.

Recommendations

WMAS recommends clearance for Hanson Oil Company's proposed Ginsberg Federal Well No. 15 and its access road and suggests that work-related activities proceed in accordance with company plans. Clearance, of course, is granted by the Bureau of Land Management.

R-30-E



T-19-S

Proposed Access Road to Hanson Oil Company's Ginsberg Federal Well No. 15, Eddy County, New Mexico.

