

30-015-23113

NO. OF COPIES RECEIVED	10
DISTRIBUTION	
SANTA FE	1
FILE	1
U.S.G.S.	2
LAND OFFICE	1
OPERATOR	1

NEW MEXICO OIL CONSERVATION COMMISSION

DEC 1 1980

O. C. D.
ARTESIA, OFFICE

Form C-101
Revised 1-1-65

5A. Indicate Type of Lease
STATE ☒ FEE ☐
5. State Oil & Gas Lease No.
E-7255

APPLICATION FOR PERMIT TO DRILL, DEEPEN, OR PLUG BACK

1a. Type of Work RE-ENTRY ☒ DRILL ☐ DEEPEN ☐ PLUG BACK ☐
b. Type of Well OIL WELL ☒ GAS WELL ☐ OTHER ☐ SINGLE ZONE ☐ MULTIPLE ZONE ☐
2. Name of Operator Marbob Energy Corporation
3. Address of Operator P.O. Box 304, Artesia, N.M. 88210
4. Location of Well UNIT LETTER J LOCATED 1650 FEET FROM THE South LINE
AND 1980 FEET FROM THE East LINE OF SEC. 8 TWP. 18S RGE. 28E NMPM
19. Proposed Depth 2,500'
19A. Formation Grayburg
20. Rotary or C.T. Reverse Unit
21. Elevations (Show whether DE, RT, etc.) 3627' GR
21A. Kind & Status Plug. Bond Statewide Active
21B. Drilling Contractor Marbob Energy Corp.
22. Approx. Date Work will start 12/2/80

7. Unit Agreement Name West Artesia Grbg. Unit
8. Farm or Lease Name Tr. 6 West Artesia Grbg. Unit
9. Well No. Tract 6, Well #20
10. Field and Pool, or Wildcat Artesia Grayburg
12. County Eddy

PROPOSED CASING AND CEMENT PROGRAM					
SIZE OF HOLE	SIZE OF CASING	WEIGHT PER FOOT	SETTING DEPTH	SACKS OF CEMENT	EST. TOP
17 1/2	13 3/8"	48	405	425	circ.
12 1/4	9 5/8"	36 + 40	2778	1200	circ.

Well has 2778' of 9 5/8" 40# J-55 in hole, we propose to dig out cellar, drill out cement plugs to 2500' and attempt to complete in the Grayburg formation.

FOR 90 DAYS UNLESS
DRILLING COMMENCED,
EXPIRES 3-2-81

Formerly Aminoil #8 St. Com. #1 TD 10560 P+ A 5-27-80

IN ABOVE SPACE DESCRIBE PROPOSED PROGRAM: IF PROPOSAL IS TO DEEPEN OR PLUG BACK, GIVE DATA ON PRESENT PRODUCTIVE ZONE AND PROPOSED NEW PRODUCTIVE ZONE. GIVE BLOWOUT PREVENTER PROGRAM, IF ANY.

I hereby certify that the information above is true and complete to the best of my knowledge and belief.
Signed Carolyn Orris Title Production Clerk Date 12/1/80
(This space for State Use)

APPROVED BY W. A. Gressett TITLE SUPERVISOR DATE DEC 2 1980
CONDITIONS OF APPROVAL, IF ANY:

NEW MEXICO OIL CONSERVATION COMMISSION
WELL LOCATION AND ACREAGE DEDICATION PLAT

Form C-102
 Supersedes C-128
 Effective 1-1-65

All distances must be from the outer boundaries of the Section.

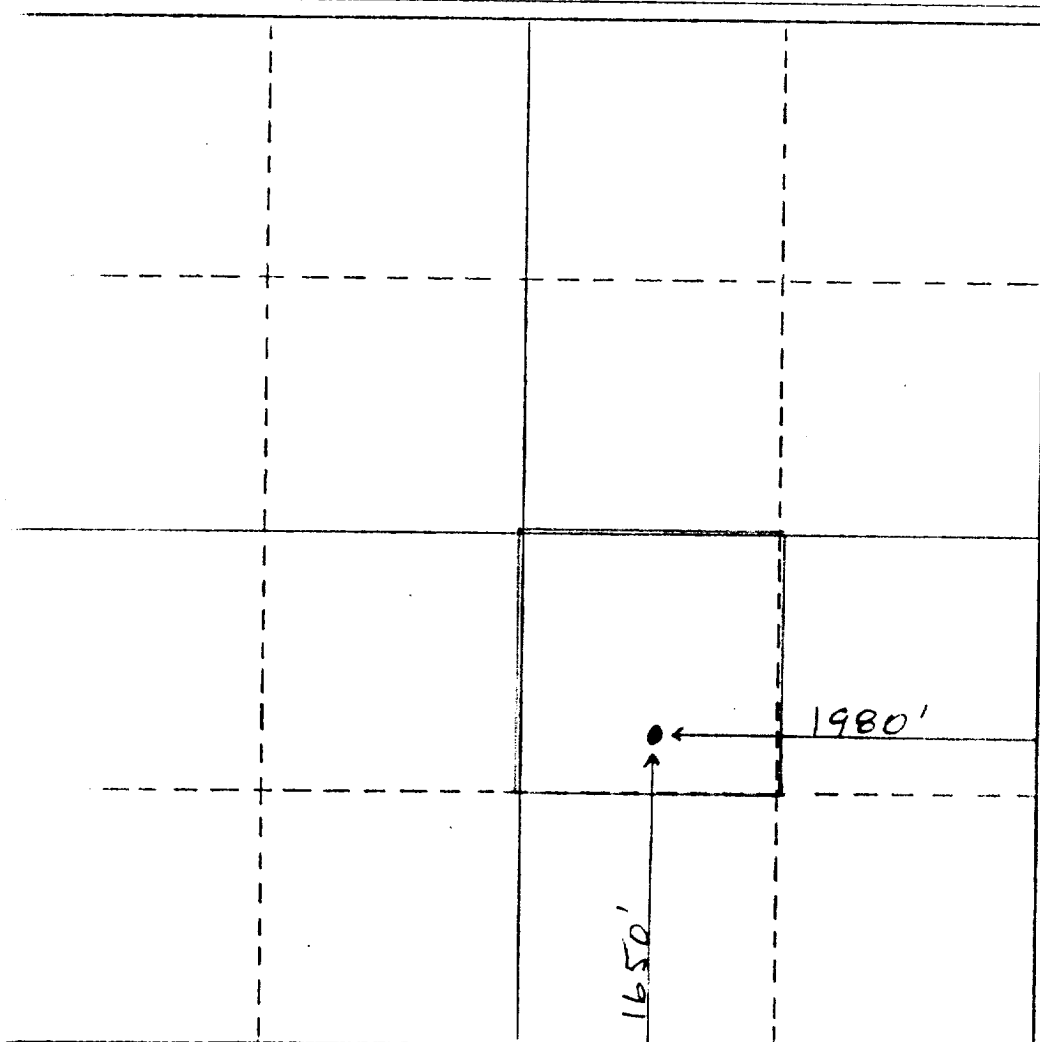
Operator Marbob Energy Corporation			Lease West Artesia Grayburg Unit Tract 6		Well No. 20
Well Letter J	Section 8	Township 18S	Range 28E	County Eddy	
Actual Footage Location of Well: 1650 feet from the South line and 1980 feet from the East line Sound Level Elev. 3627' GR Producing Formation Grayburg Pool Artesia, Grayburg Dedicated Acres per Acre 40					

1. Outline the acreage dedicated to the subject well by colored pencil or hachure marks on the plat below.
2. If more than one lease is dedicated to the well, outline each and identify the ownership thereof (both as to working interest and royalty).
3. If more than one lease of different ownership is dedicated to the well, have the interests of all owners been consolidated by communitization, unitization, force-pooling, etc?

☐ Yes ☐ No If answer is "yes," type of consolidation _____

If answer is "no," list the owners and tract descriptions which have actually been consolidated. (Use reverse side of this form if necessary.) _____

No allowable will be assigned to the well until all interests have been consolidated (by communitization, unitization, forced-pooling, or otherwise) or until a non-standard unit, eliminating such interests, has been approved by the Commission.



CERTIFICATION

I hereby certify that the information contained herein is true and complete to the best of my knowledge and belief.

Carolyn Orris

Name
Production Clerk
 Position
Marbob Energy Corp.
 Company
12/1/80
 Date

I hereby certify that the well location shown on this plat was plotted from field notes of actual surveys made by me or under my supervision, and that the same is true and correct to the best of my knowledge and belief.

Refer to original plat

Date Surveyed

Registered Professional Engineer and/or Land Surveyor

Certificate No.

330 660 990 1320 1650 1980 2310 2640 2970 3300 3630 3960 4290 4620 4950 5280 5610 5940 6270 6600