

Form 9-331 C  
(May 1963)SUBMIT IN DUPLICATE\*  
(Other instructions on  
reverse side)Form approved.  
Budget Bureau No. 42-R1425.UNITED STATES  
DEPARTMENT OF THE INTERIOR  
GEOLOGICAL SURVEY

## APPLICATION FOR PERMIT TO DRILL, DEEPEN, OR PLUG BACK

1a. TYPE OF WORK

DRILL ☒OCT 25 1979  
U.S. GEOLOGICAL SURVEY  
ARTESIA, NEW MEXICOPLUG BACK ☐

b. TYPE OF WELL

OIL  
WELL ☐GAS  
WELL ☒OTHER ☐SINGLE  
ZONE ☐RECEIVED  
ZONE ☐

2. NAME OF OPERATOR

Yates Petroleum Corporation

APR 7 1980

3. ADDRESS OF OPERATOR

207 South 4th Street, Artesia, New Mexico 88210

O.C.D.

4. LOCATION OF WELL (Report location clearly and in accordance with any State requirements.)

At surface

1980' FWL and 1680' FWL

At proposed prod. zone

Same

14. DISTANCE IN MILES AND DIRECTION FROM NEAREST TOWN OR POST OFFICE\*

22 miles ESE of Artesia, New Mexico 88210

15. DISTANCE FROM PROPOSED\*

LOCATION TO NEAREST  
PROPERTY OR LEASE LINE, FT.  
(Also to nearest drlg. unit line, if any)

1980'

16. NO. OF ACRES IN LEASE

360

17. NO. OF ACRES ASSIGNED  
TO THIS WELL

320

18. DISTANCE FROM PROPOSED LOCATION\*

TO NEAREST WELL, DRILLING, COMPLETED,  
OR APPLIED FOR, ON THIS LEASE, FT.

19. PROPOSED DEPTH

11,400'

20. ROTARY OR CABLE TOOLS

Rotary

21. ELEVATIONS (Show whether DF, RT, GR, etc.)

3438.2 GL

22. APPROX. DATE WORK WILL START\*

As soon as approved

23.

## PROPOSED CASING AND CEMENTING PROGRAM

SIZE OF HOLE	SIZE OF CASING	WEIGHT PER FOOT	SETTING DEPTH	QUANTITY OF CEMENT
17 1/2"	13 3/8"	48# J-55	450'	465 sx Circulate
12 1/4"	8 5/8"	24# J-55	2900'	800 sx Circulate
7 7/8"	5 1/2"	17#-20# N-80	11400'	350 sx

Propose to drill and test the Morrow and intermediate horizons. Will set approximately 450' surface casing to shut off gravel and casing, and will set intermediate casing at 2900', with both strings being circulated. If commercial will run 5 1/2" and cement with at least 600' of cover.

MUD PROGRAM: FW gel and LCM to 2900'; water to 8400'; Starch-Drispak- KCL to 10,400'; and flosal-Drispak-KCL to TD.

BOP PROGRAM: BOP's and hydril on 8 5/8" casing and tested, pipe rams tested daily, blind rams on trips; yellow jacket, pit level control and flow sensor on prior to Wolfcamp.

GAS NOT DEDICATED.

IN ABOVE SPACE DESCRIBE PROPOSED PROGRAM: If proposal is to deepen or plug back, give data on present productive zone and proposed new productive zone. If proposal is to drill or deepen directionally, give pertinent data on subsurface locations and measured and true vertical depths. Give blowout preventer program, if any.

24.

SIGNED

TITLE Engineer

DATE 10/25/79

(This space for Federal or State office use)

PERMIT NO.

APPROVAL DATE

4-4-80

APPROVED BY

TITLE

DATE

CONDITIONS OF APPROVAL, IF ANY:

NEW MEXICO OIL CONSERVATION COMMISSION  
WELL LOCATION AND ACREAGE DEDICATION PLAT

Form C-102  
Supersedes C-128  
Effective 1-1-65

All distances must be from the outer boundaries of the Section.

Operator <b>Yates Petroleum Corporation</b>			Lease <b>Dixon Yates LM Federal</b>		Well No. <b>1</b>
Unit Letter <b>G</b>	Section <b>28</b>	Township <b>18 South</b>	Range <b>29 East</b>	County <b>Eddy</b>	
Actual Footage Location of Well: <b>1680 1980</b> feet from the <b>North</b> line and <b>1980</b> feet from the <b>East</b> line					
Ground Level Elev. <b>3438.2</b>	Producing Formation <b>Morrow</b>	Pool <b>Wildcat</b>		Dedicated Acreage: <b>320</b> Acres	

1. Outline the acreage dedicated to the subject well by colored pencil or hatchure marks on the plat below.
2. If more than one lease is dedicated to the well, outline each and identify the ownership thereof (both as to working interest and royalty).
3. If more than one lease of different ownership is dedicated to the well, have the interests of all owners been consolidated by communitization, unitization, force-pooling, etc?

RECEIVED

APR 7 1980

O. C. D.  
ARTESIA, OFFICE

RECEIVED

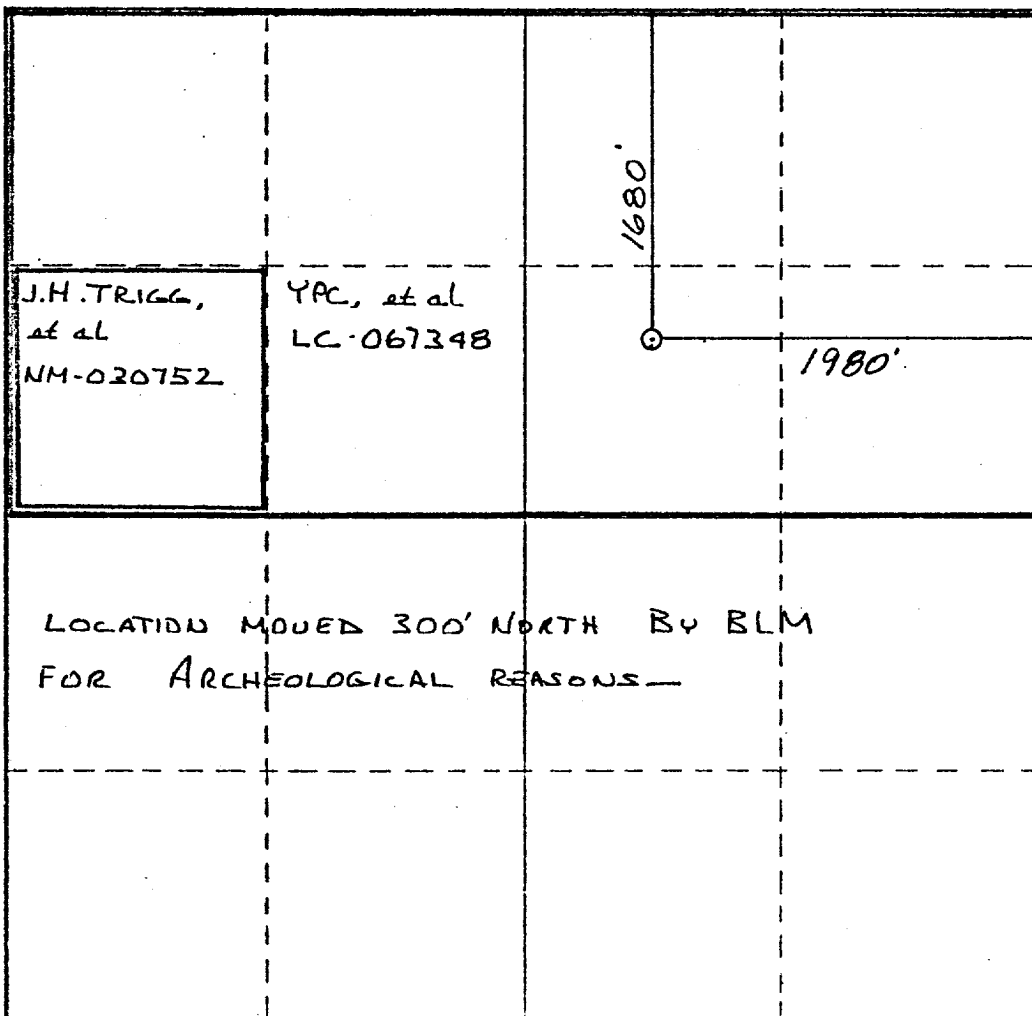
MAR 4 1980

U.S. GEOLOGICAL SURVEY  
ARTESIA, NEW MEXICO

☒ Yes ☐ No If answer is "yes," type of consolidation To Be Communitized

If answer is "no," list the owners and tract descriptions which have actually been consolidated. (Use reverse side of this form if necessary.)

No allowable will be assigned to the well until all interests have been consolidated (by communitization, unitization, forced-pooling, or otherwise) or until a non-standard unit, eliminating such interests, has been approved by the Commission.



CERTIFICATION

I hereby certify that the information contained herein is true and complete to the best of my knowledge and belief.

*Gliserio Rodriguez*  
Name

Gliserio Rodriguez

Position

Geographer

Company

Yates Petroleum Corp.

Date

I hereby certify that the well location shown on this plat was plotted from field notes of actual surveys made by me or under my supervision, and that the same is true and correct to the best of my knowledge and belief.

REFER TO ORIGINAL  
PLAT DATED

Date Surveyed

SEPT. 23, 1979

Registered Professional Engineer  
and/or Land Surveyor

Certificate No.

NEW MEXICO OIL CONSERVATION COMMISSION  
WELL LOCATION AND ACREAGE DEDICATION PLAT

Form C-102  
Supersedes C-128  
Effective 1-1-65

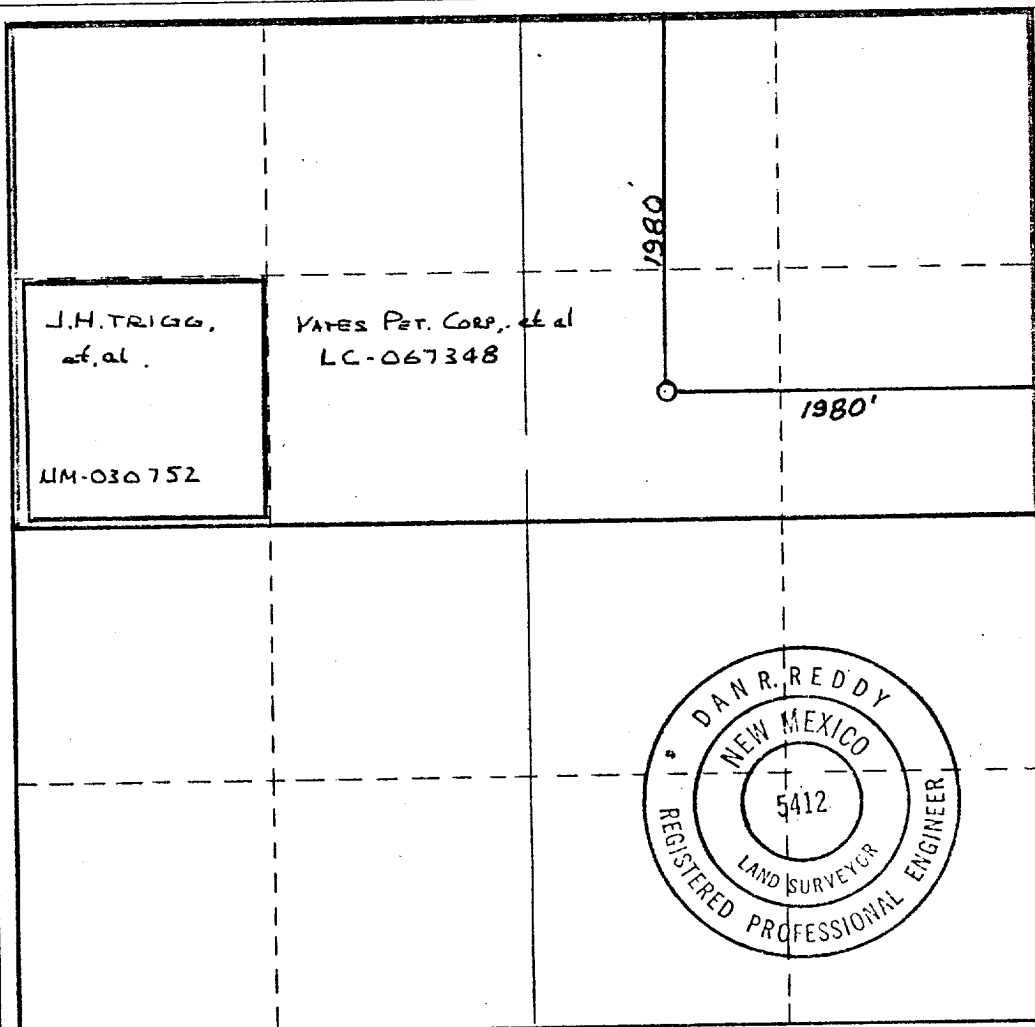
All distances must be from the outer boundaries of the Section.

Operator <b>YATES PETROLEUM CORPORATION</b>		Lease <b>Dixon Yates LM Federal</b>		Well No. <b>1</b>
Unit Letter <b>G</b>	Section <b>28</b>	Township <b>18 South</b>	Range <b>29 East</b>	County <b>Eddy</b>
Actual Footage Location of Well: <b>1980</b> feet from the <b>North</b> line and <b>1980</b> feet from the <b>East</b> line				
Ground Level Elev. <b>3438.2</b>	Producing Formation <b>MCKINLEY</b>	Pool <b>WILDCAT</b>	Dedicated Acreage: <b>320</b> Acres	

- Outline the acreage dedicated to the subject well by colored pencil or hachure marks on the plat below.
- If more than one lease is dedicated to the well, outline each and identify the ownership thereof (both as to working interest and royalty).
- If more than one lease of different ownerships is dedicated to the well, have the interests of all owners been consolidated by communitization, unitization, or forced-pooling?

☒ Yes ☐ No If answer is "yes," specify consolidation TO BE COMMUNITIZED  
If answer is "no," list the owners and fact descriptions which have actually been consolidated. (Use reverse side of this form if necessary.)

No allowable will be assigned to the well until all interests have been consolidated (by communitization, unitization, forced-pooling, or otherwise) or until a non-standard unit, eliminating such interests, has been approved by the Commission.



CERTIFICATION

I hereby certify that the information contained herein is true and complete to the best of my knowledge and belief.

*Alfredo Rodriguez*  
Name  
GLISERIC RODRIGUEZ  
Position  
GEOGRAPHER  
Company  
YATES PETROLEUM CORP.  
Date  
SEPT 25, 1979

I hereby certify that the well location shown on this plat was plotted from field notes of actual surveys made by me or under my supervision, and that the same is true and correct to the best of my knowledge and belief.

Date Surveyed  
Sept. 23, 1979

Registered Professional Engineer and/or Land Surveyor

*Dan R. Reddy*  
Certificate No.  
NM PE&LS #5412

0 330 660 990 1320 1650 1980 2310 2640 2000 1500 1000 500 0



# United States Department of the Interior

GEOLOGICAL SURVEY  
P. O. Drawer U  
Artesia, New Mexico 88210

RECEIVED

APR 7 1980

O. C. D.  
ARTESIA, OFFICE

April 4, 1980

Yates Petroleum Corporation  
207 South Fourth Street  
Artesia, New Mexico 88210

Gentlemen:

YATES PETROLEUM CORPORATION  
Dixon Yates IM Fed No. 1  
1680 FNL 1980 FEL Sec. 28 T.18S R.29E  
Eddy County Lease LC 067348

Above Data Required on Well Sign

Your APPLICATION FOR PERMIT TO DRILL the above-described well to a depth of 11,400 feet to test the Morrow is hereby approved subject to compliance with the OIL AND GAS OPERATING REGULATIONS (30 CFR 221) and the following conditions:

1. Drilling operations authorized are subject to compliance with the attached General Requirements for Oil and Gas Operations on Federal Leases, dated July 1, 1978.
2. Prior to commencing construction of road, pad, or other associated developments, operator will provide the dirt contractor with a copy of the Surface Use Plan and these Conditions of Approval including the attached General Requirements.
3. All access roads will be limited to a 12 foot wide driving surface, excluding turnarounds. Surface disturbance associated with road construction will be limited to 20 feet in width.
4. Submit a Daily Report of Operations from spud date until the well is completed and the Well Completion Report (form 9-330) is filed. The report should not be less than 8" x 5" in size and each page should identify the well.
5. All permanent above-ground structures and equipment shall be painted in accordance with the attached Painting Guidelines. The color used should simulate Sandstone Brown (Federal Standard No. 595A, color 20318 or 30318).
6. Before drilling below the 8-5/8" casing, the blowout preventer assembly will consist of a minimum of one annular type and two ram type preventers.
7. A kelly cock will be installed and maintained in operable condition.

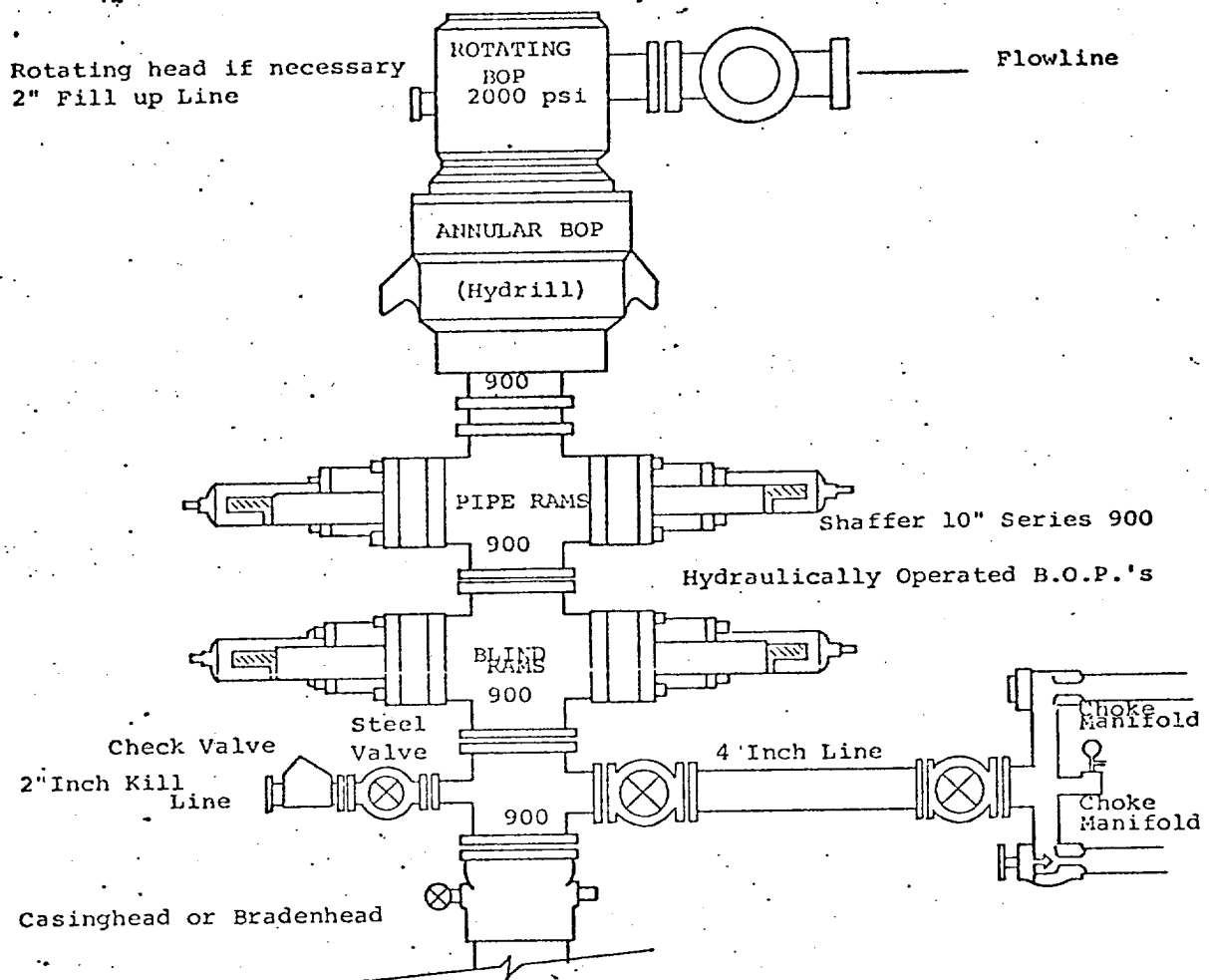
8. After setting the 8-5/8" casing string and before drilling into the Wolfcamp formation, the blowout preventers and related control equipment shall be pressure tested to rated working pressures by an independent service company. Any equipment failing to test satisfactorily shall be repaired or replaced. This office should be notified in sufficient time for a representative to witness the tests and shall be furnished a copy of the pressure test report.
9. Mud system monitoring equipment, with derrick floor indicators and visual and audio alarms, shall be installed and operating before drilling into the Wolfcamp formation and used until production casing is run and cemented. Monitoring equipment shall consist of the following:
  - (1) A recording pit level indicator to determine pit volume gains and losses.
  - (2) A mud volume measuring device for accurately determining mud volume necessary to fill the hole on trips.
  - (3) A flow sensor on the flow-line to warn of any abnormal mud returns from the well.
10. Notify the Survey by telephone 24 hours prior to spudding well.
11. Notify the Survey in sufficient time to witness the cementing of the 8-5/8" casing.
12. Cement behind the 13-3/8" and 8-5/8" casing must be circulated.
13. Please have anyone contacting the Survey in regard to this well to identify the well with all of the information required above for the well sign.

Sincerely yours,

(C. H. Stewart)  
George H. Stewart

George H. Stewart  
Acting District Engineer

## EXHIBIT B



### THE FOLLOWING CONSTITUTE MINIMUM BLOWOUT PREVENTER REQUIREMENTS

1. All preventers to be hydraulically operated with secondary manual controls installed prior to drilling out from under casing.
2. Choke outlet to be a minimum of 4" diameter.
3. Kill line to be of all steel construction of 2" minimum diameter.
4. All connections from operating manifolds to preventers to be all steel. hole or tube a minimum of one inch in diameter.
5. The available closing pressure shall be at least 15% in excess of that required with sufficient volume to operate the B.O.P.'s.
6. All connections to and from preventer to have a pressure rating equivalent to that of the B.O.P.'s.
7. Inside blowout preventer to be available on rig floor.
8. Operating controls located a safe distance from the rig floor.
9. Hole must be kept filled on trips below intermediate casing. Operator not responsible for blowouts resulting from not keeping hole full.
10. D. P. float must be installed and used below zone of first gas intrusion.

Yates Petroleum Corporation  
Dixon Yates "LM" Federal #1  
/680' 1980' FNL and 1980' FEL  
Section 28 - T18S - R29E  
Eddy County, New Mexico

In conjunction with Form 9-331C, Application for Permit to Drill subject well, Yates Petroleum Corporation submits the following ten items of pertinent information in accordance with USGS requirements:

1. The geologic surface formation is sandy alluvium.
2. The estimate tops of geologic markers are as follows:

San Andres	2853'	Atoka	10394'
1st Bone Springs	6718'	Morrow	10845'
3rd Bone Springs	8338'	L. Morrow Marker	11137'
Wolfcamp	8684'	TD	11400'
Cisco	9603'		
Strawn	10066'		

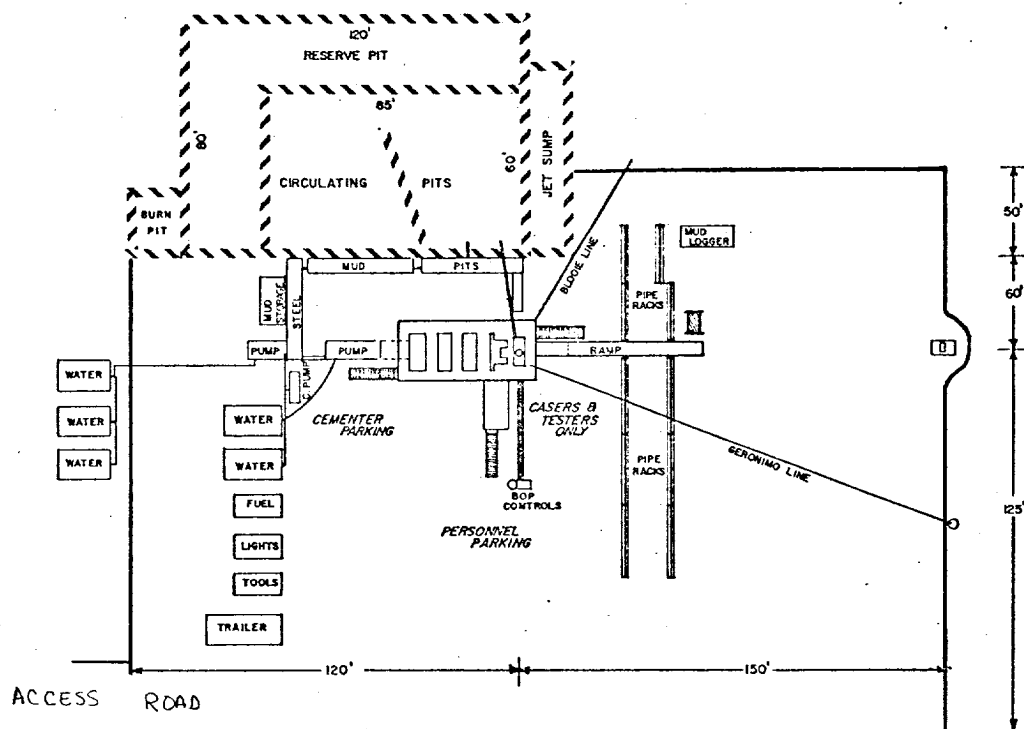
3. The estimated depths at which anticipated water, oil, or gas formations are expected to be encountered:

Water: Approximately 210' - 250'

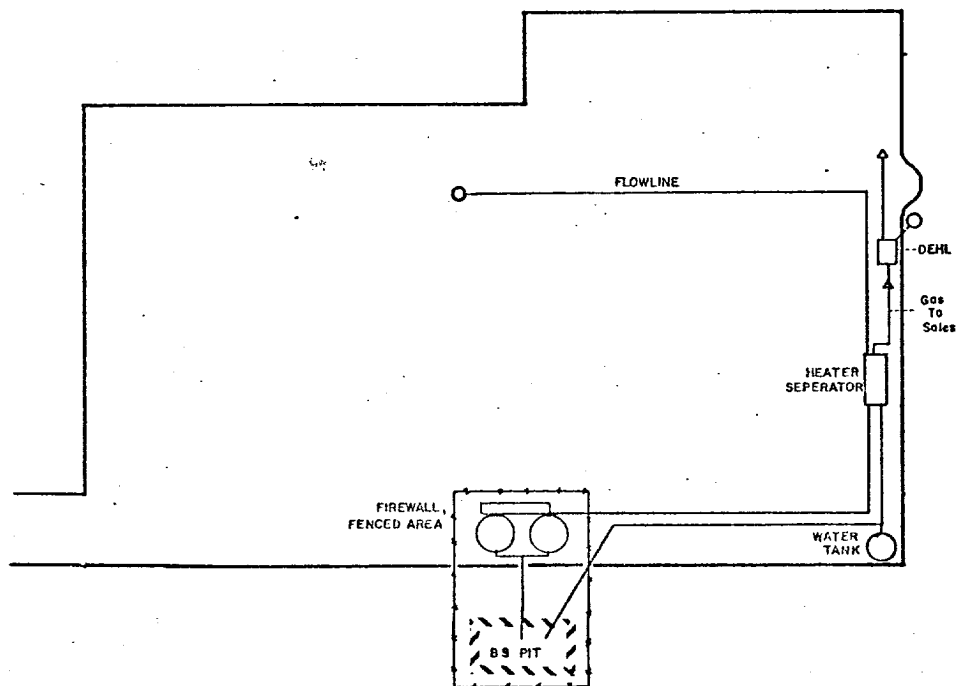
Oil or Gas:	S.A.	2850' - 3000'	Atoka	10,400' - 10,650'
	Wolfcamp	8690' - 9000'	Morrow	10,850' - 11,000'

4. Proposed Casing Program: See Form 9-331C.
5. Pressure Control Equipment: See Form 9-331C and Exhibit B.
6. Mud Program: See Form 9-331C.
7. Auxiliary Equipment: Kelly Cock; pit level indicators and flow sensor equipment; sub with full-opening valve on floor, drill pipe connection.
8. Testing, Logging and Coring Program:  
DST's: As Warranted  
Logging: Intermediate - T.D.  
Coring: CNL-FDC T. D. to casing with GR-CNL on to surface and  
DLL from T. D. to casing with selected min. R O.  
x
9. No abnormal pressures or temperatures are indicated.
10. Anticipated starting date: As soon as possible after approval.

# YATES PETROLLUM CORPORATION



DRILLING RIG LAYOUT  
Scale: 1 inch = 50 feet



TANK BATTERY LAYOUT  
Scale: 1 inch = 50 Feet