

NO. OF COPIES RECEIVED	
DISTRIBUTION	
SANTA FE	1
FILE	1 ✓
U.S.G.S.	1
LAND OFFICE	1
OPERATOR	1

NEW MEXICO OIL CONSERVATION COMMISSION

RECEIVED

APR 4 1980

O. C. D.

30-015-23278

Form C-101
Revised 1-1-65

5A. Indicate Type of Lease	
STATE <input checked="" type="checkbox"/>	FEE <input type="checkbox"/>
5. State Oil & Gas Lease No.	
B-11594-3	

APPLICATION FOR PERMIT TO DRILL, DEEPEN, OR PLUG BACK

1a. Type of Work		7. Unit Agreement Name	
b. Type of Well OIL WELL <input checked="" type="checkbox"/> GAS WELL <input type="checkbox"/> OTHER <input type="checkbox"/>		8. Farm or Lease Name Travis B State	
2. Name of Operator Harvey E. Yates Company ✓		9. Well No. 1	
3. Address of Operator P. O. Box 1933, Roswell, N. M. 88201		10. Field and Pool, or Wildcat Travis Upper Penn	
4. Location of Well UNIT LETTER F LOCATED 1980 FEET FROM THE North LINE AND 1980 FEET FROM THE West LINE OF SEC. 13 TWP. 18 RGE. 28 NMPM		12. County Eddy	
19. Proposed Depth 10,000'		19A. Formation Canyon	
20. Rotary or C.T. Rotary		21. Kind & Status Plug. Bond \$50,000 Blanket	
21A. Kind & Status Plug. Bond \$50,000 Blanket		21B. Drilling Contractor Moranco	
22. Approx. Date Work will start June 10, 1980		23. Elevation (Show whether DE, RT, etc.) 3604.5' GL	

PROPOSED CASING AND CEMENT PROGRAM

SIZE OF HOLE	SIZE OF CASING	WEIGHT PER FOOT	SETTING DEPTH	SACKS OF CEMENT	EST. TOP
17-1/2"	13-3/8"	48#	350'	Circulate	
12-1/4"	9-5/8"	32#, 36#	300 2900'	Circulate	
8-7/8"	7"	23#, 26#	10000'	Sufficient to cover 600' above pay zone	

APPROVAL VALID
FOR 90 DAYS UNLESS
DRILLING COMMENCED,

EXPIRES 7-9-80

IN ABOVE SPACE DESCRIBE PROPOSED PROGRAM: IF PROPOSAL IS TO DEEPEN OR PLUG BACK, GIVE DATA ON PRESENT PRODUCTIVE ZONE AND PROPOSED NEW PRODUCTIVE ZONE. GIVE BLOWOUT PREVENTER PROGRAM, IF ANY.

I hereby certify that the information above is true and complete to the best of my knowledge and belief.

Signed W. A. Gussert Title Vice President Date 4-3-80
(This space for State Use)

APPROVED BY W. A. Gussert TITLE SUPERVISOR, DISTRICT II DATE APR 9 1980

CONDITIONS OF APPROVAL, IF ANY:

Set 9 3/8" to 3100 as noted above
notify this office immediately if water flow is encountered

WELL LOCATION AND ACREAGE DEDICATION PLAT

Effective 10-85

All distances must be from the outer boundaries of the Section

Operator Harvey E. Yates Co.		Lessee Travis B. State		Acres 1
Section F	Section 1	Township 18 South	Range 28 East	County Eddy
Approximate Location of Well: <div style="display: flex; justify-content: space-between;"> 1980 feet from the North line and 1920 feet from the West line </div>				
Ground Level Elev. 3604.5	Producing Formation Canyon	Travis Upper Penn		80

1. Outline the acreage dedicated to the subject well by colored pencil or hatchure marks on the plat below

2. If more than one lease is dedicated to the well, outline each and identify the ownership thereof (both as to working interest and royalty).

3. If more than one lease of different ownership is dedicated to the well, have the interests of all owners been consolidated by communitization, unitization, force-pooling, etc?

RECEIVED

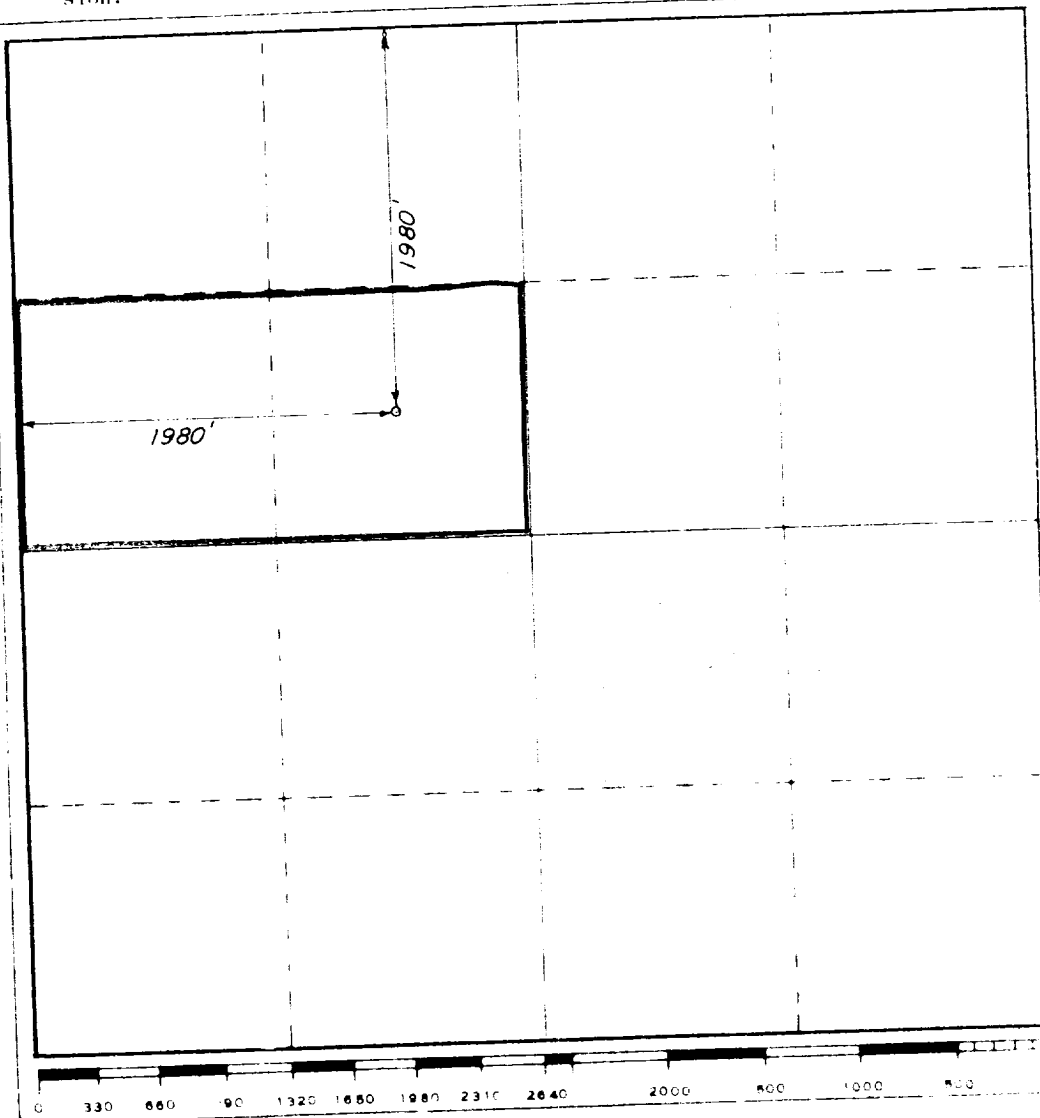
APR 4 1980

**O. C. D.
ARTESIA, OFFICE**

☐ Yes ☐ No If answer is "yes," type of consolidation _____

If answer is "no," list the owners and tract descriptions which have actually been consolidated. (Use reverse side of this form if necessary.) _____

No allowable will be assigned to the well until all interests have been consolidated (by communitization, unitization, forced-pooling, or otherwise) or until a non-standard unit, eliminating such interests, has been approved by the Commission.



CERTIFICATION

I hereby certify that the information contained herein is true and complete to the best of my knowledge and belief.

John E. Yates

Vice President

Harvey E. Yates Company

April 3, 1980

I hereby certify that the well location shown on this plat was plotted from field notes of a survey made by me or under my supervision and that the same is true and correct to the best of my knowledge and belief.

9-26-1980

John W. West

Certified by **JOHN W. WEST** 876
PATRICK A. ROMERO 8883
Ronald J. Eidson 3239

10000

Sec. 13 Township No. 10 of Range No. 26

<p>102670 FM 2405-2 65 352 21 220</p>	<p>7D2421 0 95 205 21 205 21 205 21 205</p>	<p>23437 7 280 95 270 7 280 2220</p>	
<p>102670 FM 2405-2 65 352 21 220</p>	<p>0</p>	<p>128 200 6 32 7 280</p>	
<p>102432654 5 240-120 0 7D2903 6 230-210 24 230-240</p>	<p>13 200 2 200 7D3018 0 7 2809-100 6 200 100 240-210</p>	<p>7D3000 6 200 2 200</p>	<p>7D3003 6 200 7 200</p>
<p>0</p>	<p>7D2026 6 320 2 200 0</p>		

DRAWWORKS

Brewster N-7-2W

Drum: 1-1/8" Lebus grooved

Compound: 2-engine oil bath chain drive

Brake: Hydromatic Parkersburg 40" Single

ENGINES

Two 410-H.P. D353TA Caterpillar Diesel.

DERRICK

Lee C. Moore, 127', 440,000 lb. nominal capacity.

SUBSTRUCTURE

Lee C. Moore, 10' high, 440,000 lb. nominal capacity.

MUD PUMPS

Pump No. 1: Emsco DB700. 700 H.P. with steel fluid end. 4 3/4" - 7 3/4" liners, 16" stroke. Compound-driven.

Pump No. 2: National C-250, powered by D353 Caterpillar diesel.

DRILL STRING

8400' - 4 1/2" Grade E, 16.60 lb.

3000' - 4 1/2" Grade E, 20 lb.

Tool Joints: 4" H-90, 6" OD

Thirty Drilco spiral-grooved 6 1/2" OD, 2 1/4" ID.

With 4" H-90 Joints.

Other sized drillpipe & drillcollars available.

BLOWOUT PREVENTERS

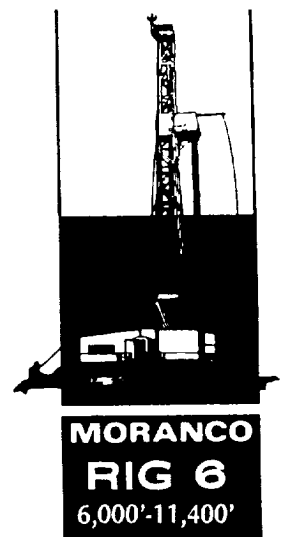
One Shaffer LWS hydraulic double 10" x 900 series. One Hydril 10" x 900 series.

Choke manifold 4" x 900 series flanged connections.

Payne 4 valve accumulator closing unit.

MUD SYSTEM

3 - 30 x 7 1/2 x 6 steel pits, with 700 Bbl. capacity. Complete low pressure circulating system, consisting of four submerged mud guns and two counter sunk jets in each pit. System utilizes a 6 x 8 centrifugal pump, powered by diesel.



MUD HOUSE

One - 8' x 30' Steel Storage House.

COMMUNICATIONS

24-Hour direct telephone interconnection through Hobbs (A.C. 505-397-3291) or Midland - Odessa (A.C. 915-563-0562).

OTHER EQUIPMENT

BLOCKS - McKissick 350 Ton

HOOK - BJ4300 350 Ton

SWIVEL - NAT N47 200 Ton

LIGHT PLANTS - Two 15 KW AC generators, powered by diesel engines.

LIGHTS - AC fluorescent or mercury - All vapor proof.

SHALE SHAKER - Link belt, single screen.

FRESH WATER STORAGE - two 500 Bbl., horizontal tanks.

HOUSING - 1 - 8' x 36' airconditioned trailer house, with sleeping and cooking facilities.

