

UNITED STATES
DEPARTMENT OF THE INTERIOR
GEOLOGICAL SURVEY

30-05-23369

APPLICATION FOR PERMIT TO DRILL, DEEPEN, OR PLUG BACK

1a. TYPE OF WORK

DRILL ☒DEEPEN ☐PLUG BACK ☐

b. TYPE OF WELL

OIL
WELL ☒GAS
WELL ☐OTHER ☐SINGLE
ZONE ☐MULTIPLE
ZONE ☐

2. NAME OF OPERATOR

Frostman Oil Corp.

3. ADDRESS OF OPERATOR

PO Box 161, Artesia, NM 88210

4. LOCATION OF WELL (Report location clearly and in accordance with any State requirements)

At surface

At proposed prod. zone

990' FNL & 330' FEL
U.S. GEOLOGICAL SURVEY
ARTESIA, NEW MEXICO

14. DISTANCE IN MILES AND DIRECTION FROM NEAREST TOWN OR POST OFFICE*

21 miles SSE of Artesia, NM

15. DISTANCE FROM PROPOSED*

LOCATION TO NEAREST
PROPERTY OR LEASE LINE, FT.
(Also to nearest drlg. unit line, if any)

330'

16. NO. OF ACRES IN LEASE

40

17. NO. OF ACRES ASSIGNED
TO THIS WELL

40

18. DISTANCE FROM PROPOSED LOCATION*
TO NEAREST WELL, DRILLING COMPLETED,
OR APPLIED FOR, ON THIS LEASE, FT.

19. PROPOSED DEPTH

3000'

20. ROTARY OR CABLE TOOLS

Rotary

21. ELEVATIONS (Show whether DF, RT, GR, etc.)

3431 G.L.

22. APPROX. DATE WORK WILL START*

ASAP

23.

PROPOSED CASING AND CEMENTING PROGRAM

SIZE OF HOLE	SIZE OF CASING	WEIGHT PER FOOT	SETTING DEPTH	QUANTITY OF CEMENT
11"	8 5/8"	24#	approx 350'	250 sx circulate
7 7/8"	4 1/2"	9 1/4#	3000'	300 sx

We propose to drill and test the San Andres and Intermediate formations. Approx. 350' of surface casing will be set to shut off gravel and cavings. 4 1/2" production casing will be run, perforated, and possible sand frac'd for production.

BOP Program: A 10" 900 series Shaffer Type F Double B.O.P. will be used in drilling this well.

Mud Program: Fresh water gel to 950'; water to TD.

RECEIVED

JUN 13 1980

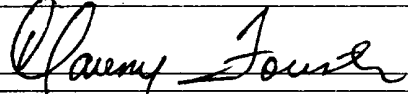
O. C. D.

ARTESIA, OFFICE

IN ABOVE SPACE DESCRIBE PROPOSED PROGRAM: If proposal is to deepen or plug back, give data on present productive zone and proposed new productive zone. If proposal is to drill or deepen directionally, give pertinent data on subsurface locations and measured and true vertical depths. Give blowout preventer program, if any.

24.

SIGNED



TITLE President

DATE 5/29/80

(This space for Federal or State office use)

PERMIT NO.

APPROVAL DATE

June 11, 1980

APPROVED BY

TITLE

DATE

CONDITIONS OF APPROVAL, IF ANY:

*See Instructions On Reverse Side

**NEW MEXICO OIL CONSERVATION COMMISSION
WELL LOCATION AND ACREAGE DEDICATION PLAT**

Form C-102
Supersedes C-128
Effective 1-1-65

All distances must be from the outer boundaries of the Section.

Operator Frostman Oil Corp.			Lease Sively Federal		Well No. 1
Unit Letter A	Section 31	Township 18 South	Range 29 East	County Eddy	
Actual Footage Location of Well: 990 feet from the North line and 330 feet from the East line					
Ground Level Elev. 3431.2	Producing Formation Q., G., SA		Pool Und. So Loco Hills Q., G., SA		Dedicated Acreage: 40 Acres

1. Outline the acreage dedicated to the subject well by colored pencil or hatchure marks on the plat below.
2. If more than one lease is dedicated to the well, outline each and identify the ownership thereof (both as to working interest and royalty).
3. If more than one lease of different ownership is dedicated to the well, have the interests of all owners been consolidated by communitization, unitization, force-pooling, etc?

☐ Yes ☐ No If answer is "yes," type of consolidation _____

If answer is "no," list the owners and tract descriptions which have actually been consolidated. (Use reverse side of this form if necessary.) _____

No allowable will be assigned to the well until all interests have been consolidated (by communitization, unitization, forced-pooling, or otherwise) or until a non-standard unit, eliminating such interests, has been approved by the Commission.

RECEIVED

MAY 28-1980

U.S. GEOLOGICAL SURVEY
ARTESIA, NEW MEXICO

REG. PROF. ENGINEER & LAND SURVEYOR
 STATE OF
676
 NEW MEXICO
 JOHN W. WEST

CERTIFICATION

I hereby certify that the information contained herein is true and complete to the best of my knowledge and belief.

Clarence Forister

Name
Clarence Forister

Position
President

Company
Frostman Oil Corp.

Date
5/29/80

I hereby certify that the well location shown on this plat was plotted from field notes of actual surveys made by me or under my supervision, and that the same is true and correct to the best of my knowledge and belief.

Date Given
April 21, 1980

Registered Professional Engineer and/or Land Surveyor

John W. West

Certificate No. **JOHN W. WEST 676**
PATRICK A. ROMERO 6063
Ronald J. Eidson 3239

0 200 400 600 800 1000 1200 1400 1600 1800 2000 2200 2400 2600 2800 3000



N.M.O.C.D. COPY

United States Department of the Interior

RECEIVED

GEOLOGICAL SURVEY

P. O. Drawer U
Artesia, New Mexico 88210

JUN 13 1980

O. C. D.

June 11, 1980 ARTESIA, OFFICE

Frostman Oil Corporation
P. O. Box 161
Artesia, New Mexico 88210

Gentlemen:

FROSTMAN OIL CORPORATION Sivley Fed No. 1 990 FNL 330 FEL Sec. 31 T.18S R.29E Eddy County Lease No. NM-0924
--

Above Data Required on Well Sign

Your APPLICATION FOR PERMIT TO DRILL the above-described well to a depth of 3,000 feet to test the San Andres formation is hereby approved subject to compliance with the OIL AND GAS OPERATING REGULATIONS (30 CFR 221) and the following conditions:

1. Drilling operations authorized are subject to compliance with the GENERAL REQUIREMENTS FOR OIL AND GAS OPERATIONS ON FEDERAL LEASES, dated July 1, 1978.
2. Prior to commencing construction of road, pad, or other associated developments, operator will provide the dirt contractor with a copy of the SURFACE USE PLAN and this approval including the GENERAL REQUIREMENTS.
3. All access roads will be limited to a 12 foot wide driving surface, excluding turnarounds. Surface disturbance associated with road construction will be limited to 20 feet in width.
4. Submit a Daily Report of Operations from spud date until the Well Completion Report (form 9-330) is filed. The progress report should be not less than 8" x 5" in size and each page should identify the well.
5. All permanent above-ground structures and equipment shall be painted in accordance with the attached Painting Requirements. The color used should simulate Sandstone Brown (Federal Standard No. 595A, color 20318 or 30318).
6. Notify the Survey by telephone 24 hours prior to spudding well.
7. Cement behind the 8-5/8" casing must be circulated.

8. Special Stipulations: Use pipeline road for access to location.
9. Please have anyone contacting the Survey in regard to this well to identify the well with all of the information required above for the well sign.

Sincerely yours,

George H. Stewart
Acting District Engineer

MULTI-POINT SURFACE USE AND OPERATIONS PLAN

Frostman Oil Corporation
Sively Federal #1
Section 31 - T18S - R29E
990' FW - 330' FEI
(Developmental Well)

RECEIVED

MAY 28 1980

U.S. GEOLOGICAL SURVEY

ARTESIA, NEW MEXICO

This plan is submitted with Form 9-331C, Application for Permit to Drill, covering the above described well. The purpose of this plan is to describe the location of the proposed well, the proposed construction activities and operations plan, the magnitude of surface disturbance involved, and the procedures to be followed in rehabilitating the surface after completion of the operations, so that a complete appraisal can be made of the environmental effect associated with the operation.

1. EXISTING ROADS.

Exhibit A is a portion of a USGS topographic map showing the wells and roads in the vicinity of the proposed location. The proposed wellsite is located approximately 22 miles SSE of Artesia, New Mexico and the access route to the location is Exhibit A.

DIRECTIONS:

1. Proceed east from Artesia on Highway 82 for a distance of approximately 14 miles.
2. Turn southeast on to State 360 for approximately 7 miles. Turn SSW at Hondo Drilling Company sign for 2.4 miles. Turn west for .5 mile.
3. New road starts here going north.

2. PLANNED ACCESS ROAD.

- A. The proposed new access will be approximately 650' in length from point of origin to the edge of the drilling pad. The road will lie in a south-to-north direction.
- B. The new road will be 12 feet in width (driving surface).
- C. The new road will be bladed and crowned, with drainage on one side.
- D. The new road has been flagged and the route of the road is clearly visible.

3. LOCATION OF EXISTING WELLS.

- A. Drilling activity, mostly shallow wells within a one-mile radius of the wellsite is shown on Exhibit A. There is a deep well in Section 28 and 33-18-29.

4. LOCATION OF EXISTING AND/OR PROPOSED FACILITIES.

- A. There are no production facilities on this lease at the present time.
- B. In the event that the well is productive, the necessary production facilities will be installed on the drilling pad. If the well is productive oil, a gas or diesel self-contained unit will be used to provide the necessary power. No power will be required if the well is productive of gas.

5. LOCATION AND TYPE OF WATER SUPPLY.

- A. It is planned to drill the proposed well with a fresh water system. The water will be obtained from commercial sources and will be hauled to the location by truck over the existing and proposed roads shown in Exhibit A.

6. SOURCE OF CONSTRUCTION MATERIALS.

- A. Caliche required for construction of the drilling pad and the new access road will be obtained from the existing federal pit in Section 31 T18S-R29E NE $\frac{1}{4}$.

7. METHODS OF HANDLING WASTE DISPOSAL.

- A. Drill cuttings will be disposed of in the reserve pits.
- B. Drilling fluids will be allowed to evaporate in the reserve pits until the pits are dry.
- C. Water produced during operations will be collected in tanks until hauled to an approved disposal system, or separate disposal application will be submitted to the USCS for appropriate approval.
- D. Oil produced during operation will be stored in tanks until sold.
- E. Current laws and regulations pertaining to the disposal of human waste will be complied with.
- F. Trash, waste paper, garbage and junk will be buried in a separate trash pit and covered with a minimum of 24 inches dirt. All waste material will be contained to prevent scattering by the wind.
- G. All trash and debris will be buried or removed from the wellsite within 30 days after finishing drilling and/or completion operations.

8. ANCILLARY FACILITIES.

- A. None required.

9. WELLSITE LAYOUT.

- A. Exhibit C shows the relative location and dimensions of the well pad, the reserve pits, etc.
- B. The location surface is undulating, minor cuts or fills will be needed in the pad area.
- C. The reserve pits will be plastic lined.
- D. A 400' x 400' area has been staked and flagged.

10. PLANS FOR RESTORATION OF THE SURFACE.

- A. After finishing drilling and/or completion operations, all equipment and other material not needed for further operations will be removed. The location will be cleaned of all trash and junk to leave the wellsite in as aesthetically pleasing a condition as possible.
- B. Unguarded pits, if any, containing fluids will be fenced until they have been filled.
- C. If the proposed well is non-productive, all rehabilitation and/or vegetation requirements of the BLM and USGS will be complied with and will be accomplished as expeditiously as possible. All pits will be filled leveled within 90 days after abandonment.

11. OTHER INFORMATION.

- A. Topography: The land surface in the vicinity of the wellsite is in sand dunes. The immediate area of the wellsite is discussed above in paragraph 9B.
- B. Flora and Fauna: The vegetation cover consists of prairie grass, prairie flowers, reasewood and miscellaneous desert growth. No wildlife was observed but the wildlife in the area probably includes those typical of semi-arid desert land. The area is used for cattle grazing.
- C. There are no ponds, lakes, or rivers in the area.
- D. There are no inhabited dwellings in the vicinity of the proposed well.
- E. Surface Ownership: The wellsite is on federal surface.
- F. There is no evidence of any archeological, historical, or cultural sites in the area. See Arch Report.

12. OPERATOR'S REPRESENTATIVE.

- A. The field representatives responsible for assuring compliance with the approved surface use plan are:

Clarence Forister
Frostman Oil Corporation
PO Box 161
Artesia, NM 88210
(505) 746-3344

13. CERTIFICATION.

I hereby certify that I, or persons under my direct supervision, have inspected the proposed drillsite and access route, that I am familiar with the conditions which presently exist; that the statements made in this plan are to the best of my knowledge, true and correct; and, that the work associated with the operations proposed herein will be performed by Frostman Oil Corporation and its subcontractors in conformity with this plan and the terms and conditions under which it is approved.

May 29, 1980
Date

Clarence Forister
Clarence Forister, Operator

Frostman Oil Corporation
Sively Federal #1
990' FWL - 330' FEI
Section 31 - T18S - R29E
Eddy County, New Mexico

In conjunction with Form 9-331C, Application for Permit to Drill subject well Frostman Oil Corporation submits the following ten items of pertinent information in accordance with USGS requirements:

1. The geologic surface formation is sandy alluvium.
2. The estimate tops of geologic markers are as follows:

Queen	1790'
Grayburg	2145'
San Andres	2605'
Lovington sand	2810'
TD	3000'

3. The estimated depths at which anticipated water, oil, or gas formations are expected to be encountered:

Water: Approximately 200-240'

Oil or Gas: S.A. 2670-3000'

4. Proposed Casing Program: See Form 9-331C.
5. Pressure Control Equipment: See Form 9-331C and Exhibit B.
6. Mud Program: See Form 9-331C.
7. Auxiliary Equipment: Blowout preventer.
8. Testing, Logging, and Coring Program:
Logging: CNL - F/D TD to 500' DLI
Samples: 10' samples 500' to TD
9. No abnormal pressures or temperatures are indicated.
10. Anticipated starting date: As soon as possible after approval.

NEW MEXICO
(EDDY COUNTY)
OIL CITY QUADRANGLE
15-MINUTE SERIES

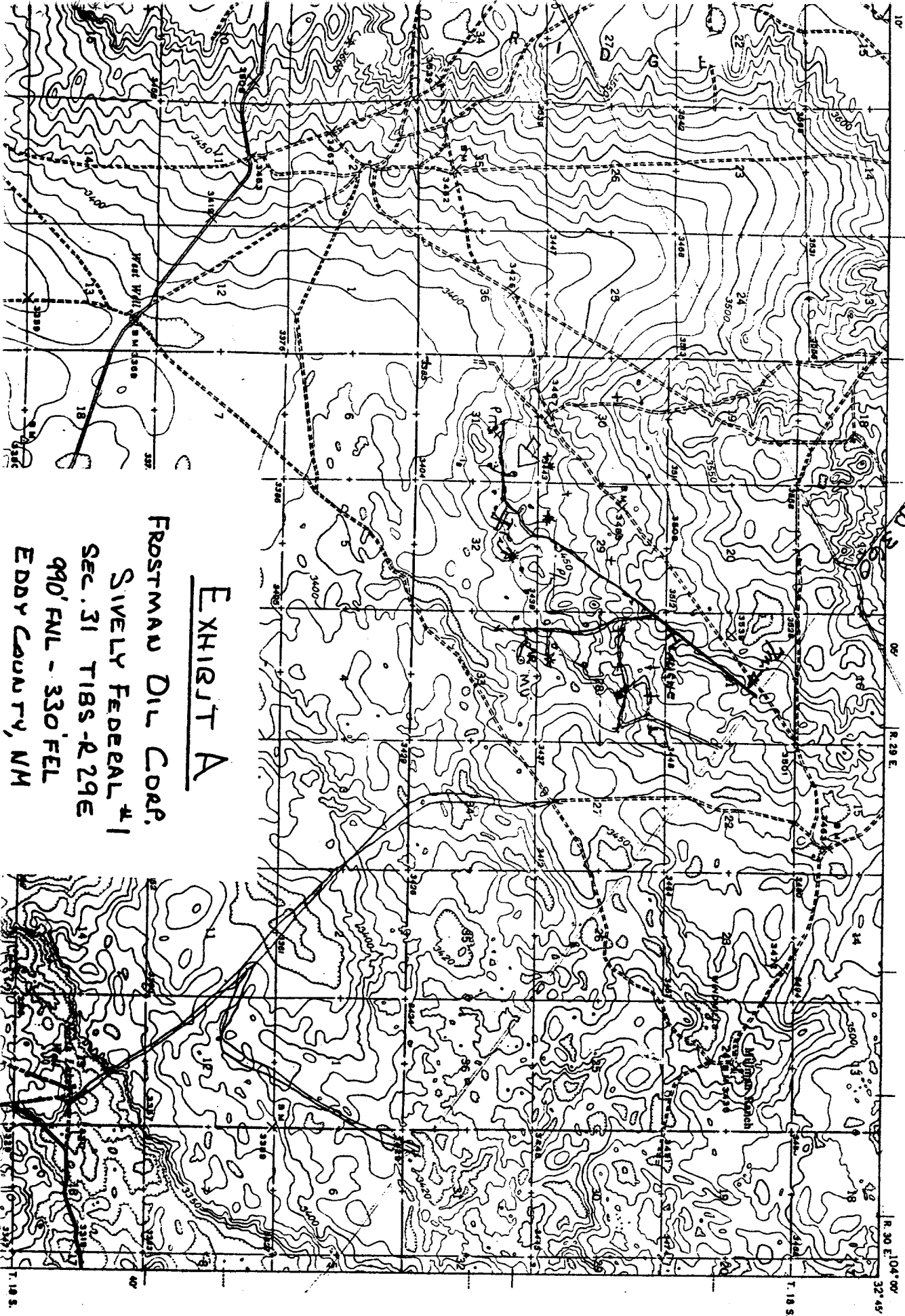


EXHIBIT A

FROSTMAN DR. CORP.
SIVELY FEDERAL #1
SEC. 31 T18S-R29E
990' FNL - 330' FEL
EDDY COUNTY, NM

30-015-23369

OCRID 24164

PROP 24454

POO1 39524

