

NO. OF COPIES RECEIVED	
DISTRIBUTION	
SANTA FE	1
FILE	1
U.S.G.S.	2
LAND OFFICE	1
OPERATOR	1

NEW MEXICO OIL CONSERVATION COMMISSION

RECEIVED
JUL 15 1980
O. C. D.
ARTESIA, OFFICE

30-015-23415
Form C-101
Revised 1-1-65

5A. Indicate Type of Lease
STATE ☒ FILE ☐
5. State Oil & Gas Lease No.
L-122

APPLICATION FOR PERMIT TO DRILL, DEEPEN, OR PLUG BACK

1a. Type of Work b. Type of Well DILL <input checked="" type="checkbox"/> DEEPEN <input type="checkbox"/> PLUG BACK <input type="checkbox"/> OIL WELL <input checked="" type="checkbox"/> GAS WELL <input type="checkbox"/> OTHER <input type="checkbox"/> SINGLE ZONE <input type="checkbox"/> MULTIPLE ZONE <input type="checkbox"/>		7. Unit Agreement Name
2. Name of Operator Yates Petroleum Corporation		8. Farm or Lease Name Penasco "IW" shallow
3. Address of Operator 207 South 4th Street, Artesia, New Mexico 88210		9. Well No. 5
4. Location of Well UNIT LETTER I LOCATED 1650 FEET FROM THE South LINE AND 330 FEET FROM THE East LINE OF SEC. 31 TWP. 18S RGE. 25E NMPH		10. Field and Pool, or Unit Agreement Penasco Draw
		12. County Eddy
19. Proposed Depth 3100		19A. Formation Yeso
20. Rotary or C.T. Rotary		
21. Elevations (Show whether DF, RI, etc.) 3615'	21A. Kind & Status Plug, Bend Blanket	21B. Drilling Contractor Cactus Drilling Co.
		22. Approx. Date Work will start ASAP

PROPOSED CASING AND CEMENT PROGRAM

SIZE OF HOLE	SIZE OF CASING	WEIGHT PER FOOT	SETTING DEPTH	SACKS OF CEMENT	EST. TOP
15"	10 3/4"	32.75	approx. 360'	350	circulated
9 5/8"	7"	20#	approx. 1000'	650	circulated
6 1/4"	4 1/2"	9.5	approx. 3100'	375	circulated

Propose to drill a Yeso test well. Approximately 360' of surface casing will be set to shut off gravel and caving, and intermediate casing will be set 100' below the Artesian Water Zone. A 4 1/2" production string will be run to TD and all strings circulated. Well will be perforated and stimulated for production.

MUD PROGRAM: F.W. gel and LCM to 1000', fresh water to TD.

BOP PROGRAM: BOP's will be installed on the 7" casing and tested, pipe rams daily blind rams on trips.

APPROVAL VALID
FOR 90 DAYS UNLESS
DRILLING COMMENCED,

EXPIRES 10-16-80

IN ABOVE SPACE DESCRIBE PROPOSED PROGRAM; IF PROPOSAL IS TO DEEPEN OR PLUG BACK, GIVE DATA ON PRESENT PRODUCTIVE ZONE AND PROPOSED NEW PRODUCTIVE ZONE. GIVE BLOWOUT PREVENTER PROGRAM, IF ANY.

I hereby certify that the information above is true and complete to the best of my knowledge and belief.

Signed Alvin F. [Signature] Title Geographer Date 7/15/80

(This space for State Use)

APPROVED BY W. A. Gussert TITLE SUPERVISOR, DISTRICT II DATE JUL 16 1980

CONDITIONS OF APPROVAL, IF ANY:

Cement must be circulated to
surface behind all casing

Notify N.M.O.C.C. in sufficient
time to witness cementing
the 7" casing

NEW MEXICO OIL CONSERVATION COMMISSION
WELL LOCATION AND ACREAGE DEDICATION PLAT

Form C-102
Supersedes C-128
Effective 1-1-65

All distances must be from the outer boundaries of the Section.

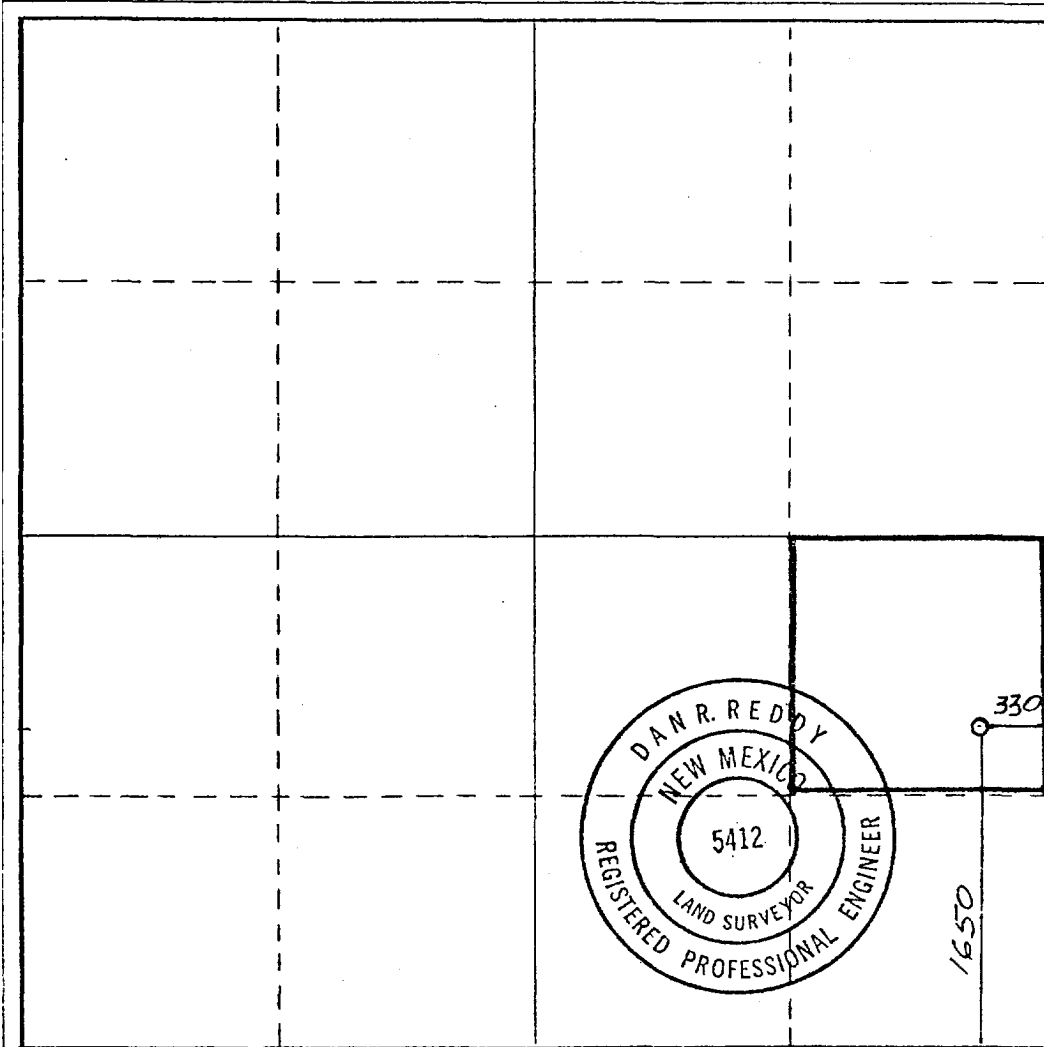
Operator Yates Petroleum Corporation			Lease Penasco IW State		Well No. 5
Unit Letter I	Section 31	Township 18 South	Range 25 East	County Eddy	
Actual Footage Location of Well: 1650 feet from the South line and 330 feet from the East line					
Ground Level Elev. 3615	Producing Formation YESO		Pool PENASCO DEAN SA-YESO ASSOC.		Dedicated Acreage: 40 Acres

1. Outline the acreage dedicated to the subject well by colored pencil or hachure marks on the plat below.
2. If more than one lease is dedicated to the well, outline each and identify the ownership thereof (both as to working interest and royalty).
3. If more than one lease of different ownership is dedicated to the well, have the interests of all owners been consolidated by communitization, unitization, force-pooling, etc?

☐ Yes ☐ No If answer is "yes," type of consolidation _____

If answer is "no," list the owners and tract descriptions which have actually been consolidated. (Use reverse side of this form if necessary.) _____

No allowable will be assigned to the well until all interests have been consolidated (by communitization, unitization, forced-pooling, or otherwise) or until a non-standard unit, eliminating such interests, has been approved by the Commission.



CERTIFICATION

I hereby certify that the information contained herein is true and complete to the best of my knowledge and belief.

Gliserio Rodriguez
Name
GLISERIO RODRIGUEZ

Position
GEOGRAPHER

Company
YATES PETROLEUM CORP

Date
JULY 14 1980

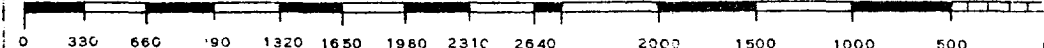
I hereby certify that the well location shown on this plat was plotted from field notes of actual surveys made by me or under my supervision, and that the same is true and correct to the best of my knowledge and belief.

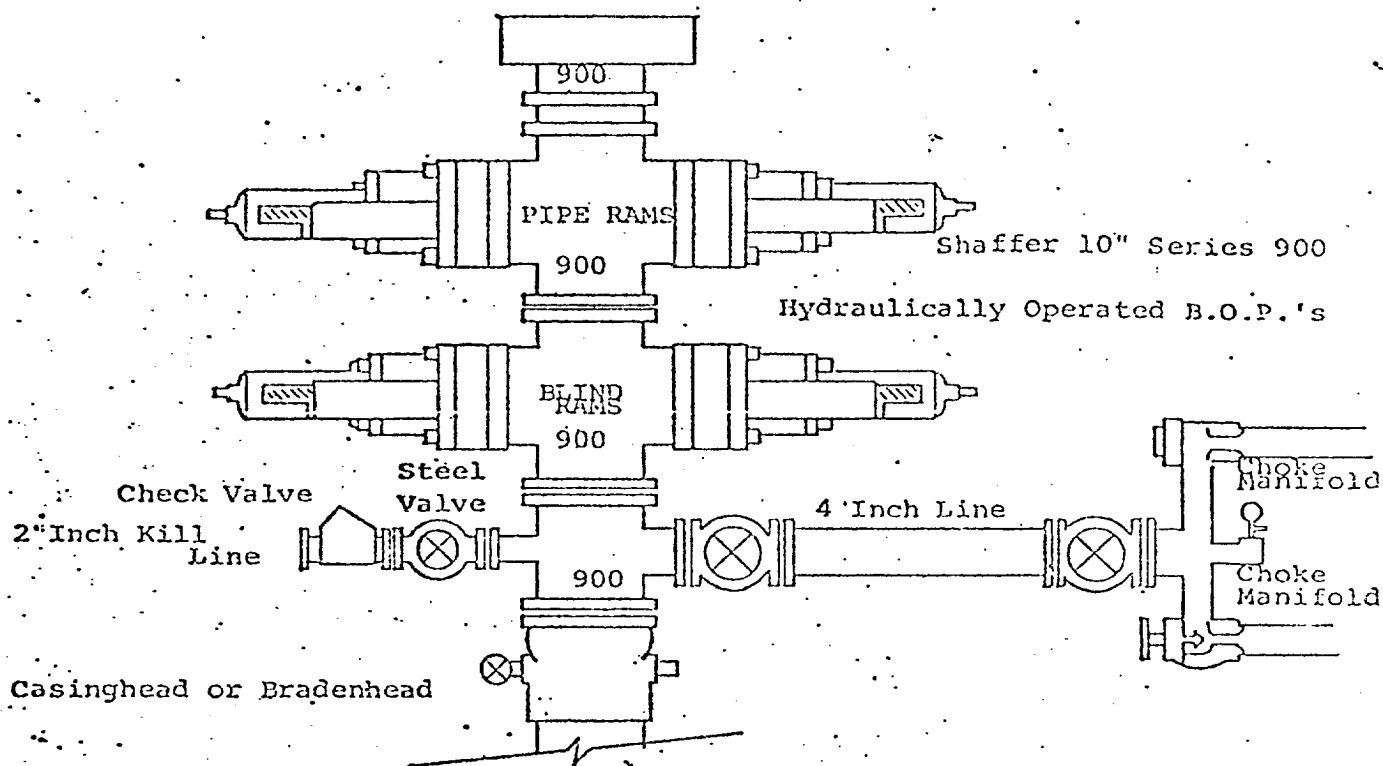
Date Surveyed
July 11, 1980

Registered Professional Engineer and/or Land Surveyor

Dan R. Reddy
Certificate No.

NMPE&LS #5412





THE FOLLOWING CONSTITUTE MINIMUM BLOWOUT PREVENTER REQUIREMENTS

1. All preventers to be hydraulically operated with secondary manual controls installed prior to drilling out from under casing.
2. Choke outlet to be a minimum of 4" diameter.
3. Kill line to be of all steel construction of 2" minimum diameter.
4. All connections from operating manifolds to preventers to be all steel, hole or tube a minimum of one inch in diameter.
5. The available closing pressure shall be at least 15% in excess of that required with sufficient volume to operate the B.O.P.'s.
6. All connections to and from preventer to have a pressure rating equivalent to that of the B.O.P.'s.
7. Inside blowout preventer to be available on rig floor.
8. Operating controls located a safe distance from the rig floor.
9. Hole must be kept filled on trips below intermediate casing. Operator not responsible for blowouts resulting from not keeping hole full.
10. D. P. float must be installed and used below zone of first gas intrusion.