

NEW MEXICO OIL CONSERVATION COMMISSION
WELL LOCATION AND ACREAGE DEDICATION PLAT

AMENDED

Form C-102
Supersedes C-128
Effective 1-1-65

All distances must be from the outer boundaries of the Section.

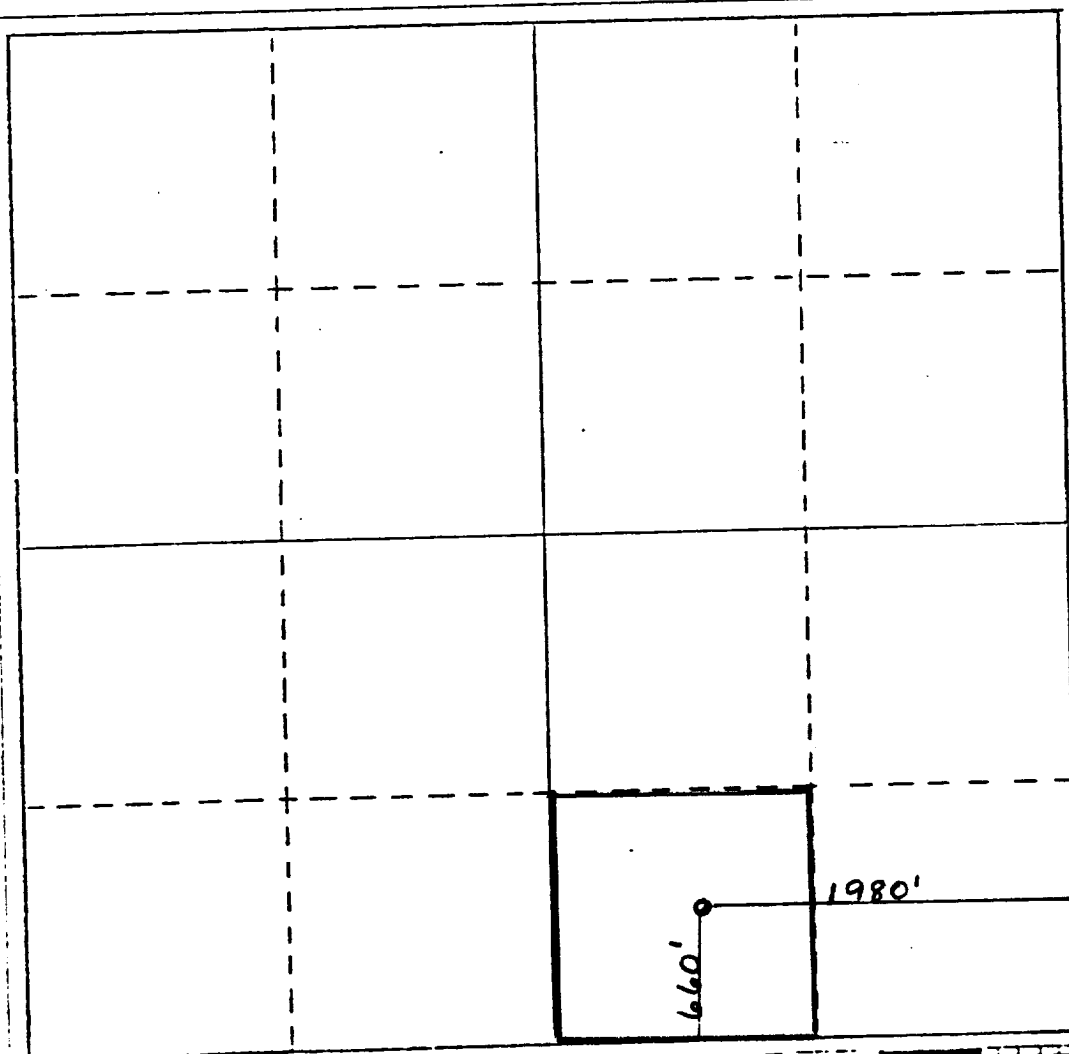
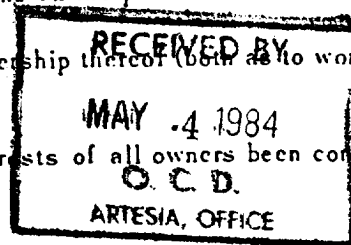
Operator Tenneco Oil Company ✓		Lease State JL 36		Well No. 1
Unit Letter O	Section 36	Township 18S	Range 29E	County Eddy
Actual Footage Location of Well: 660 feet from the south line and 1980 feet from the East line				
Ground Level Elev. 3435'	Producing Formation Queen	Pool So. Leonard (Queen) - Grayburg	Dedicated Acreage: 40 Acres	

1. Outline the acreage dedicated to the subject well by colored pencil or hachure marks on the plat below.
2. If more than one lease is dedicated to the well, outline each and identify the ownership thereof (both as to working interest and royalty).
3. If more than one lease of different ownership is dedicated to the well, have the interests of all owners been consolidated by communitization, unitization, force-pooling, etc?

☐ Yes ☐ No If answer is "yes," type of consolidation _____

If answer is "no," list the owners and tract descriptions which have actually been consolidated. (Use reverse side of this form if necessary.) _____

No allowable will be assigned to the well until all interests have been consolidated (by communitization, unitization, forced-pooling, or otherwise) or until a non-standard unit, eliminating such interests, has been approved by the Commission.



CERTIFICATION

I hereby certify that the information contained herein is true and complete to the best of my knowledge and belief.

Anita Gray

Name

Anita Gray

Position

Production Analyst

Company

Tenneco Oil Company

Date

May 2, 1984

I hereby certify that the well location shown on this plat was plotted from field notes of actual surveys made by me or under my supervision, and that the same is true and correct to the best of my knowledge and belief.

Date Surveyed

Prepared by Professional Engineer and/or Land Surveyor

Certificate No.

3120 1920 1820 1720 1620 1520 1420 1320 1220 1120 1020 920 820 720 620 520 420 320 220 120 0