

NEW MEXICO OIL CONSERVATION COMMISSION  
DRAWER DD  
ARTESIA, NEW MEXICO

FIELD REPORT FOR CEMENTING OF WELLS

Operator <u>Yates Petr Corp</u>		Lease <u>Penasco IW Shallow</u>		Well # <u>7</u>	
Location of Well	Unit <u>19805 666W L</u>	Section <u>31</u>	Township <u>18</u>	Range <u>25</u>	County <u>Eddy</u>
Drilling Contractor	<u>Landis #4</u>		Type of Equipment <u>Rotary ASAP</u>		

\* Witness

APPROVED CASING PROGRAM

Size of Hole	Size of Casing	Weight Per Foot	New or Used	Depth	Sacks Cement
17 1/2	13 3/8	48# J-SS		370	350 SX Circ
12 1/4	8 5/8	24# J-SS		1100	550 SX Circ
7 7/8	5 1/2 - 4 1/2	15.5# - 17# K-SS		9250	300 SX

Casing Data: 10.5 - 11.6# K-SS

Surface            joints of            inch            # Grade           

           (Approved) (Rejected)

Inspected by            date           

Cementing Program

Size of hole 12 1/4" Size of Casing 8 5/8" Sacks cement required           

Type of Shoe used guide Float collar used Insert Btm 3 jts welded yes

TD of hole 1026' Set 1026' Feet of 8 5/8" Inch 24 # Grade J-SS

New-used csg. @ 1026' with 1502# sacks neat cement around shoe

+ 200 sax C additives 370 cc

Plug down @ 4830 (AM) (PM) Date 10/21/80

Cement circulated yes No. of Sacks 45

Cemented by Dowell Witnessed by Mike Shulfield

Temp. Survey ran @            (AM) (PM) Date            top cement @           

Casing test @            (AM) (PM) Date           

Method Used            Witnessed by           

Checked for shut off @            (AM) (PM) Date           

Method used            Witnessed by           

Remarks: + 800 sx 6 5/8" ppg (40% ogel, 8# Kofite, 1/4 celofake, 370 cc)

No centralizers next circ. @ 570'-608'  
next dily break @ 914'

454

30-015-23463

NO. OF COPIES RECEIVED	6
DISTRIBUTION	
SANTA FE	1
FILE	1 ✓
U.S.G.S.	2
LAND OFFICE	1
OPERATOR	1

NEW MEXICO OIL CONSERVATION COMMISSION

OCT 17 1980

AMENDED

O. C. D.  
ARTESIA, OFFICE

5A. Indicate Type of Lease
STATE <input checked="" type="checkbox"/> FEE <input type="checkbox"/>
5. State Oil & Gas Lease No.
L-122

APPLICATION FOR PERMIT TO DRILL, DEEPEN, OR PLUG BACK

1a. Type of Work		7. Unit Agreement Name	
b. Type of Well DRILL <input checked="" type="checkbox"/> DEEPEN <input type="checkbox"/> PLUG BACK <input type="checkbox"/> OIL WELL <input type="checkbox"/> GAS WELL <input checked="" type="checkbox"/> OTHER <input type="checkbox"/> SINGLE ZONE <input type="checkbox"/> MULTIPLE ZONE <input type="checkbox"/>		8. Firm or Lease Name Penasco IW State Com.	
2. Name of Operator Yates Petroleum Corporation ✓		9. Well No. 7	
3. Address of Operator 207 South 4th Street, Artesia, NM 88210		10. Field and Pool, or Wildcat Und. Penasco Draw Morrow	
4. Location of Well UNIT LETTER L LOCATED 1980 FEET FROM THE South LINE AND 660 FEET FROM THE West LINE OF SEC. 31 TWP. 18S RGE. 25E NMDM		11. County Eddy	
12. Proposed Depth 9250		13A. Formation Morrow	
13B. Drilling Contractor Landis		13C. Rotary or C.T. Rotary	
21. Elevations (show whether DF, RT, etc.) 3690' GL		22. Approx. Date Work will start As soon as approved	
21A. Kind & Status Plug. Bond Blanket		21B. Drilling Contractor Landis	

PROPOSED CASING AND CEMENT PROGRAM

SIZE OF HOLE	SIZE OF CASING	WEIGHT PER FOOT	SETTING DEPTH	SACKS OF CEMENT	EST. TOP
17 1/2"	13 3/8"	48# J-55	approx. 370'	350	circulate
12 1/4"	8 5/8"	24# J-55	approx. 1050'	550	circulate
7 7/8"	5 1/2" or 4 1/2"	15.5-17# K-55	TD 9250	300	
		10.5-11.6# K-55			

Propose to drill and test the Morrow and intermediate horizons. Will set approximately 370' surface casing to shut off gravel and cavings. Will set intermediate casing 100' below Artesian Water Zones. Both strings will be circulated with cement. If commercial, will run 5 1/2" or 4 1/2" casing and cement with 600' of cover.

MUD PROGRAM: Gel and LCM to 1050', water to 6700', flosal-driskap-KCL to TD.

BOP PROGRAM: BOP's and hydril on 8 5/8" casing, tested daily, Yellow Jacket prior to drilling Wolfcamp.

GAS NOT DEDICATED.

APPROVAL VALID  
FOR 90 DAYS UNLESS  
DRILLING COMMENCED,

EXPIRES 1-17-81

IN ABOVE SPACE DESCRIBE PROPOSED PROGRAM: IF PROPOSAL IS TO DEEPEN OR PLUG BACK, GIVE DATA ON PRESENT PRODUCTIVE ZONE AND PROPOSED NEW PRODUCTIVE ZONE. GIVE BLOWOUT PREVENTER PROGRAM, IF ANY.

I hereby certify that the information above is true and complete to the best of my knowledge and belief.

Signed John A. Lopez Title Regulatory Coordinator Date 10/17/80  
(This space for State Use)

APPROVED BY W.A. Gessert TITLE SUPERVISOR, DISTRICT II

OCT 17 1980

CONDITIONS OF APPROVAL, IF ANY:

Cement must be circulated to surface behind 13 3/8" 48# casing

DATE 10/17/80  
time to witness cementing the 8 5/8" casing

NEW MEXICO OIL CONSERVATION COMMISSION  
WELL LOCATION AND ACREAGE DEDICATION PLAT

Form C-102  
Supersedes C-128  
Effective 1-1-65

All distances must be from the outer boundaries of the Section.

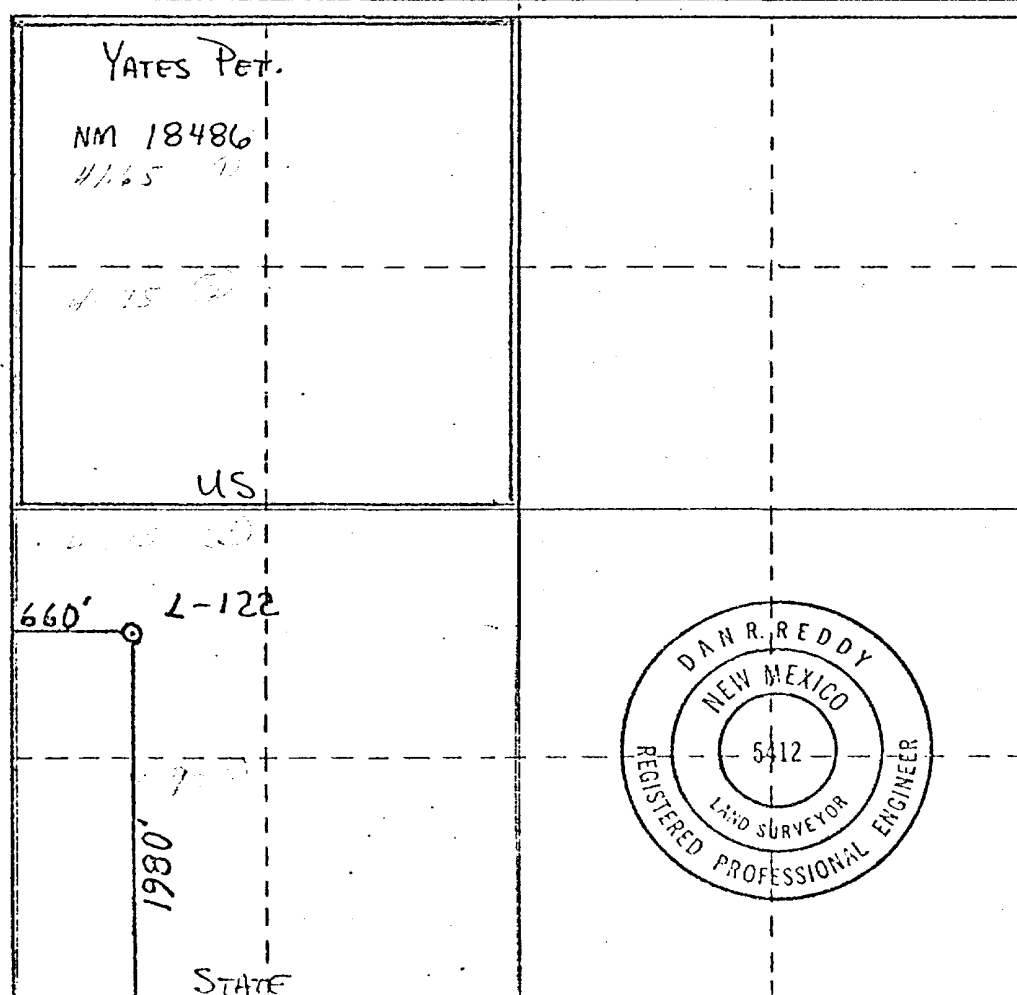
Operator <b>YATES PETROLEUM CORPORATION</b>		Lease <b>Penasco IW</b>		State <b>Conn.</b>		Well No. <b>7</b>
Unit Letter <b>L</b>	Section <b>31</b>	Township <b>18 South</b>	Range <b>25 East</b>	County <b>Eddy</b>		
Actual Footage Location of Well: <b>1980</b> feet from the <b>South</b> line and <b>660</b> feet from the <b>West</b> line						
Ground Level Elev. <b>3690.</b>	Producing Formation <b>MORROW</b>		Pool <b>UNDES. PENASCO DEER MORROW</b>	Dedicated Acreage: <b>320 327 20</b> Acres		

1. Outline the acreage dedicated to the subject well by colored pencil or hachure marks on the plat below.
2. If more than one lease is dedicated to the well, outline each and identify the ownership thereof (both as to working interest and royalty).
3. If more than one lease of different ownership is dedicated to the well, have the interests of all owners been consolidated by communitization, unitization, force-pooling, etc?

☒ Yes ☐ No If answer is "yes," type of consolidation COMMUNITIZED

If answer is "no," list the owners and tract descriptions which have actually been consolidated. (Use reverse side of this form if necessary.)

No allowable will be assigned to the well until all interests have been consolidated (by communitization, unitization, forced-pooling, or otherwise) or until a non-standard unit, eliminating such interests, has been approved by the Commission.



CERTIFICATION

I hereby certify that the information contained herein is true and complete to the best of my knowledge and belief.

JOHNNY A. LOPEZ

Name  
Johnny A. Lopez

Position  
REGULATORY COORDINATOR

Company  
YATES PETROLEUM CORPORATION

Date  
9/5/80

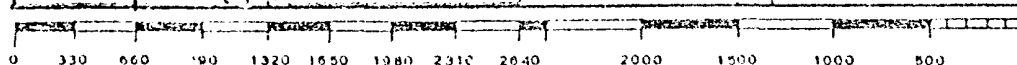
I hereby certify that the well location shown on this plat was plotted from field notes of actual surveys made by me or under my supervision, and that the same is true and correct to the best of my knowledge and belief.

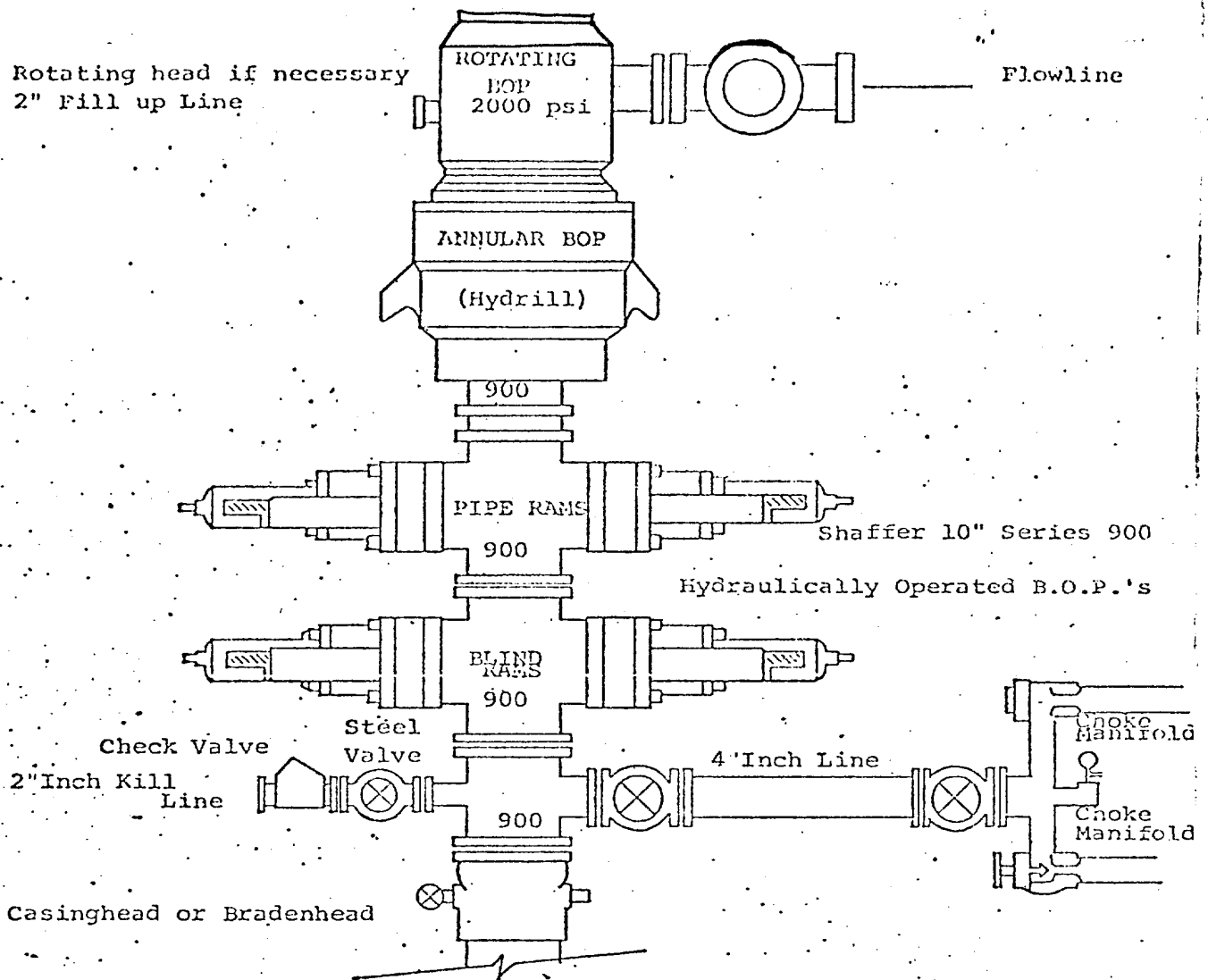
Date Surveyed  
August 14, 1980

Registered Professional Engineer and/or Land Surveyor

Dan R. Reddy

Certificate No.  
NM PE&LS #5412





THE FOLLOWING CONSTITUTE MINIMUM BLOWOUT PREVENTER REQUIREMENTS

1. All preventers to be hydraulically operated with secondary manual controls installed prior to drilling out from under casing.
2. Choke outlet to be a minimum of 4" diameter.
3. Kill line to be of all steel construction of 2" minimum diameter.
4. All connections from operating manifolds to preventers to be all steel. hole or tube a minimum of one inch in diameter.
5. The available closing pressure shall be at least 15% in excess of that required with sufficient volume to operate the B.O.P.'s.
6. All connections to and from preventer to have a pressure rating equivalent to that of the B.O.P.'s.
7. Inside blowout preventer to be available on rig floor.
8. Operating controls located a safe distance from the rig floor.
9. Hole must be kept filled on trips below intermediate casing. Operator not responsible for blowouts resulting from not keeping hole full.
10. D. P. float must be installed and used below zone of first gas intrusion.