

30-015-23511

Form C-101
Revised 1-1-65

NEW MEXICO OIL CONSERVATION COMMIS. N

NO. OF COPIES RECEIVED	5
DISTRIBUTION	
SANTA FE	1
FILE	1 ✓
U.S.G.S.	2
LAND OFFICE	
OPERATOR	1

5A. Indicate Type of Lease	
STATE <input type="checkbox"/>	FEE <input checked="" type="checkbox"/>
5. State Oil & Gas Lease No.	

APPLICATION FOR PERMIT TO DRILL, DEEPEN, OR PLUG BACK

1a. Type of Work DRILL <input checked="" type="checkbox"/> DEEPEN <input type="checkbox"/> PLUG BACK <input type="checkbox"/>		7. Unit Agreement Name	
b. Type of Well OIL WELL <input checked="" type="checkbox"/> GAS WELL <input type="checkbox"/> OTHER <input type="checkbox"/> SINGLE ZONE <input type="checkbox"/> MULTIPLE ZONE <input type="checkbox"/>		8. Farm or Lease Name Stromberg "OM"	
2. Name of Operator Yates Petroleum Corporation ✓		9. Well No. 1	
3. Address of Operator 207 South 4th Street, Artesia, NM 88210		10. Field and Pool, or Wildcat Penasco Draw SA-Yeso Assoc	
4. Location of Well UNIT LETTER N LOCATED 330 FEET FROM THE South LINE AND 2310 FEET FROM THE West LINE OF SEC. 31 TWP. 18S RGE. 26E NMPM		12. County Eddy	
19. Proposed Depth 3100'		19A. Formation Yeso	20. Rotary or C.T. Rotary
21. Elevations (Show whether DF, RT, etc.) 3424 GL	21A. Kind & Status Plug. Bond Blanket	21B. Drilling Contractor L&M #1	22. Approx. Date Work will start As soon as approved

23.

PROPOSED CASING AND CEMENT PROGRAM

SIZE OF HOLE	SIZE OF CASING	WEIGHT PER FOOT	SETTING DEPTH	SACKS OF CEMENT	EST. TOP
15"	10 3/4"	32.3#	approx. 360'	300 sx	circulate
9 1/2"	7"	20#	approx. 1300'	550 sx	circulate
6 1/4"	4 1/2"	9.5#	TD	250 sx	

We propose to drill and test the Yeso and intermediate formations. Approximately 360' of surface casing will be set to shut off gravel and cavings, and intermediate casing will be set 100' below the Artesian Water Zone. If commercial, will run 4 1/2" casing, with 600' cement cover, will perforate and stimulate as needed for production.

MUD PROGRAM: FW gel and LCM to 1300', fresh water to TD.

BOP PROGRAM: BOP's and hydril will be installed on the 7" casing and tested daily.

APPROVAL VAND
FOR 90 DAYS UNLESS
DRILLING COMMENCED,
EXPIRES 1-29-81

Post 1 ID-1
11 1/2" + API BOP
10-31-80

IN ABOVE SPACE DESCRIBE PROPOSED PROGRAM; IF PROPOSAL IS TO DEEPEN OR PLUG BACK, GIVE DATA ON PRESENT PRODUCTIVE ZONE AND PROPOSED NEW PRODUCTIVE ZONE. GIVE BLOWOUT PREVENTER PROGRAM, IF ANY.

I hereby certify that the information above is true and complete to the best of my knowledge and belief.

Signed [Signature] Title Regulatory Coordinator Date 10/28/80
(This space for State Use)

APPROVED BY [Signature] TITLE SUPERVISOR, DISTRICT II DATE OCT 29 1980

CONDITIONS OF APPROVAL, IF ANY:

Cement must be circulated to
surface behind all casing

Notify N.M.O.C.C. in sufficient
time to witness cementing
the 7" casing

NEW MEXICO OIL CONSERVATION COMMISSION
WELL LOCATION AND ACREAGE DEDICATION PLAT

Form C-102
Supersedes C-128
Effective 1-1-65

All distances must be from the outer boundaries of the Section.

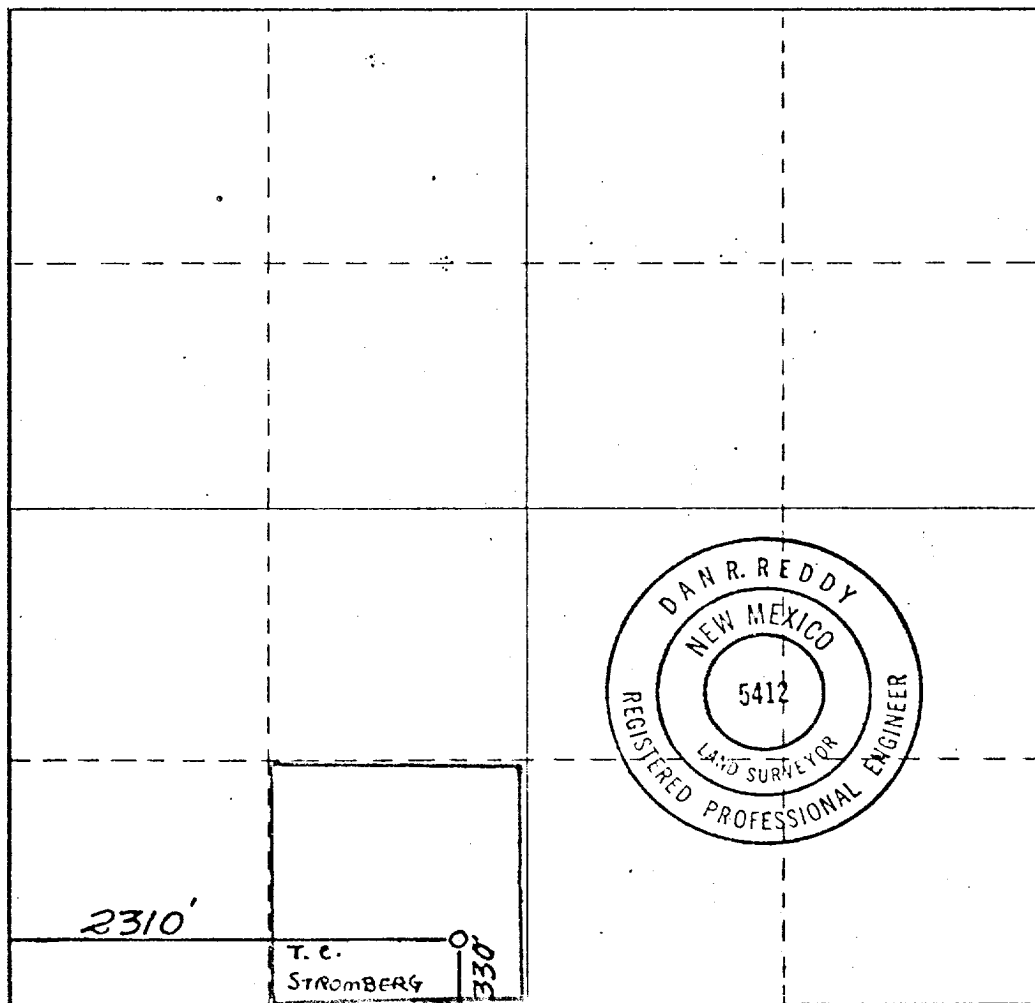
Operator YATES PETROLEUM CORPORATION			Lease Stromberg OM		Well No. 1
Unit Letter N	Section 31	Township 18 South	Range 26 East	County Eddy	
Actual Footage Location of Well: 330 feet from the South line and 2310 feet from the West line					
Ground Level Elev. 3424	Producing Formation YESO		Pool UNDES.	Dedicated Acreage: 40 Acres	

- Outline the acreage dedicated to the subject well by colored pencil or hachure marks on the plat below.
- If more than one lease is dedicated to the well, outline each and identify the ownership thereof (both as to working interest and royalty).
- If more than one lease of different ownership is dedicated to the well, have the interests of all owners been consolidated by communitization, unitization, force-pooling, etc?

☐ Yes ☐ No If answer is "yes," type of consolidation _____

If answer is "no," list the owners and tract descriptions which have actually been consolidated. (Use reverse side of this form if necessary.) _____

No allowable will be assigned to the well until all interests have been consolidated (by communitization, unitization, forced-pooling, or otherwise) or until a non-standard unit, eliminating such interests, has been approved by the Commission.



CERTIFICATION

I hereby certify that the information contained herein is true and complete to the best of my knowledge and belief.

Johnny A. Lopez
Name

JOHNNY A. LOPEZ
Position

REGULATORY COORDINATOR
Company

YATES PETROLEUM CORPORATION
Date

10/21/80

I hereby certify that the well location shown on this plat was plotted from field notes of actual surveys made by me or under my supervision, and that the same is true and correct to the best of my knowledge and belief.

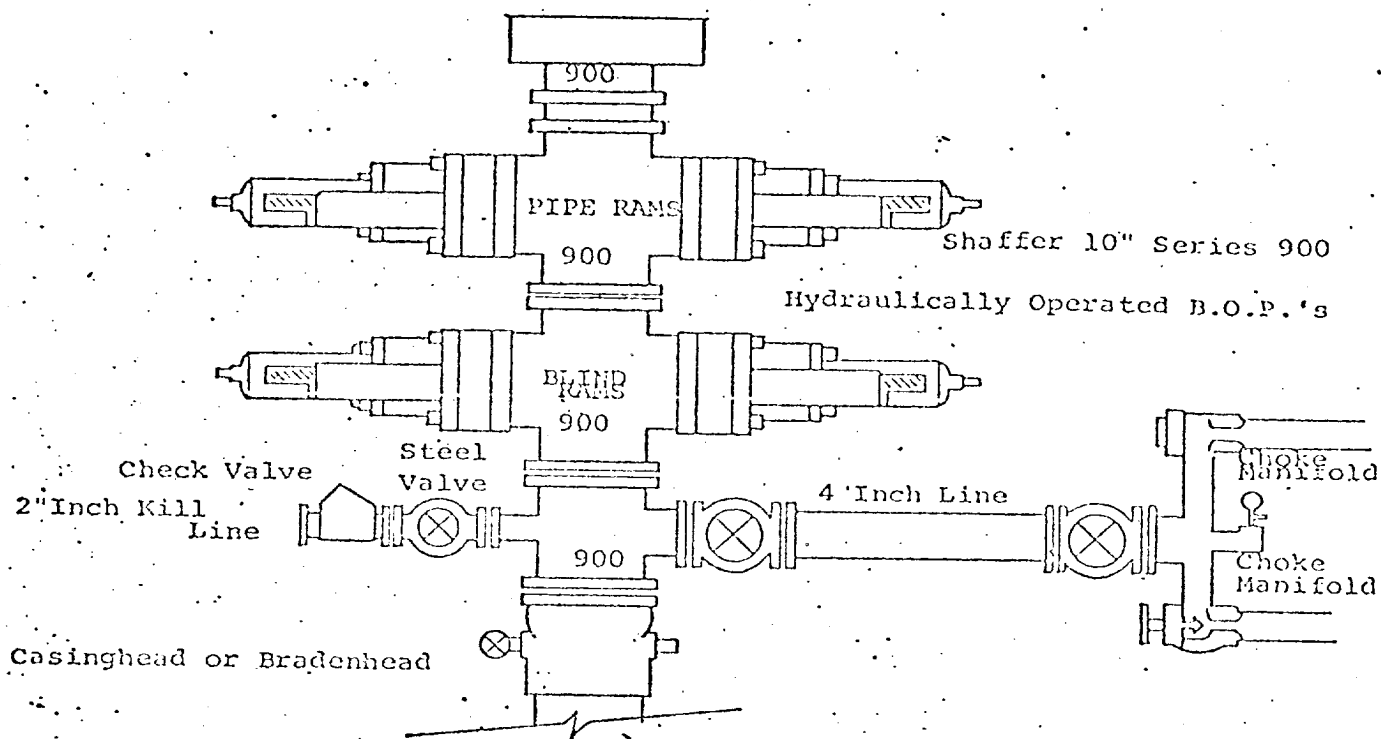
Date Surveyed
Oct. 12, 1980

Registered Professional Engineer and/or Land Surveyor

Dan R. Reddy
Certificate No.

NMPE&LS #5412

0 330 660 990 1320 1650 1980 2310 2640 2970 3300 3630 3960 4290 4620 4950 5280 5610 5940 6270 6600



THE FOLLOWING CONSTITUTE MINIMUM BLOWOUT PREVENTER REQUIREMENTS

1. All preventers to be hydraulically operated with secondary manual controls installed prior to drilling out from under casing.
2. Choke outlet to be a minimum of 4" diameter.
3. Kill line to be of all steel construction of 2" minimum diameter.
4. All connections from operating manifolds to preventers to be all steel, hole or tube a minimum of one inch in diameter.
5. The available closing pressure shall be at least 15% in excess of that required with sufficient volume to operate the B.O.P.'s.
6. All connections to and from preventer to have a pressure rating equivalent to that of the B.O.P.'s.
7. Inside blowout preventer to be available on rig floor.
8. Operating controls located a safe distance from the rig floor.
9. Hole must be kept filled on trips below intermediate casing. Operator not responsible for blowouts resulting from not keeping hole full.
10. D. P. float must be installed and used below zone of first gas intrusion.

NO. OF COPIES RECEIVED	
DISTRIBUTION	
SANTA FE	
FILE	
U.S.G.S.	
LAND OFFICE	
OPERATOR	

NEW MEXICO OIL CONSERVATION COMMISSION

OCT 22 1980

O.C.D.

ARTESIA OFFICE

Form C-101
Revised 1-1-65

5A. Indicate Type of Lease
STATE ☐ FEE ☒
5. State Oil & Gas Lease No.

APPLICATION FOR PERMIT TO DRILL, DEEPEN, OR PLUG BACK

1a. Type of Work b. Type of Well DRILL <input checked="" type="checkbox"/> DEEPEN <input type="checkbox"/> PLUG BACK <input type="checkbox"/> OIL WELL <input checked="" type="checkbox"/> GAS WELL <input type="checkbox"/> O. HLR <input type="checkbox"/> SINGLE ZONE <input type="checkbox"/> MULTIPLE ZONE <input type="checkbox"/>		7. Unit Agreement Name
2. Name of Operator Yates Petroleum Corporation		8. Firm or Lease Name Stromberg OM
3. Address of Operator 207 South 4th Street, Artesia, NM 88210		9. Well No. 1
4. Location of Well UNIT LETTER N LOCATED 330 FEET FROM THE South LINE AND 2310 FEET FROM THE West LINE OF SEC. 31 TWP. 18S RGE. 26E NADRM		10. Field and Pool, or Willcat Undesignated
11. Proposed Depth 3100'		12. Formation Yeso
13. Kind of Drilling Method Blanket		14. Rotary or C.T. Rotary
15. Approx. Date Work will start As soon as approved		

PROPOSED CASING AND CEMENT PROGRAM

SIZE OF HOLE	SIZE OF CASING	WEIGHT PER FOOT	SETTING DEPTH	SACKS OF CEMENT	EST. TOP
17 1/2"	13 3/8"	48#	approx. 360'	300 sx	circulate
12 1/2"	8 5/8"	24#	approx. 1300'	550 sx	circulate
7 7/8"	5 1/2 or 4 1/2	15.5-17# 10.5-11.6#	TD	250 sx	

We propose to drill and test the Yeso and intermediate formations. Approximately 360' of surface casing will be set to shut off gravel and cavings, and intermediate casing will be set 100' below the Artesian Water Zone. If commercial, will run 4 1/2" or 5 1/2" with 600' cement cover, will perforate and stimulate as needed for production.

MUD PROGRAM: FW Gel and LCM to 1120', fresh water to 4000', 2% KCL water to 6300', starch-driskpak-KCL to 8300', flosal-driskpak-KCL to TD.

BOP PROGRAM: BOP's and hydril will be installed on the 8 5/8" casing and tested.

APPROVAL VAND
FOR 90 DAYS UNLESS
DRILLING COMMENCED,

EXPIRES 1-29-81

IN ABOVE SPACE DESCRIBE PROPOSED PROGRAM: IF PROPOSAL IS TO DEEPEN OR PLUG BACK, GIVE DATA ON PRESENT PRODUCTIVE ZONE AND PROPOSED NEW PRODUCTIVE ZONE. GIVE ABLANDT PREVENTER PROGRAM, IF ANY.

hereby certify that the information above is true and complete to the best of my knowledge and belief.

Signed John A. Lopez Title Regulatory Coordinator Date 10/22/80
(This space for State Use)

APPROVED BY _____ TITLE _____ DATE _____
CONDITIONS OF APPROVAL, IF ANY: surface behind all casing time to witness cementing the 8 7/8" casing