

NO. OF COPIES RECEIVED	5
DISTRIBUTION	
SANTA FE	1
FILE	1
U.S.G.S.	2
LAND OFFICE	
OPERATOR	1

NEW MEXICO OIL CONSERVATION COMMISSION

FEB 13 1981

O. C. D.  
ARTESIA, OFFICE

30-015-23669

Form C-101  
Revised 1-1-65

5A. Indicate Type of Lease  
STATE ☐ FEE ☒

5. State Oil & Gas Lease No.

APPLICATION FOR PERMIT TO DRILL, DEEPEN, OR PLUG BACK

a. Type of Work DRILL <input checked="" type="checkbox"/> DEEPEN <input type="checkbox"/> PLUG BACK <input type="checkbox"/>		7. Unit Agreement Name
b. Type of Well OIL WELL <input checked="" type="checkbox"/> GAS WELL <input type="checkbox"/> OTHER <input type="checkbox"/> SINGLE ZONE <input type="checkbox"/> MULTIPLE ZONE <input type="checkbox"/>		8. Firm or Lease Name Young "PJ"
c. Name of Operator Yates Petroleum Corporation		9. Well No. 1
d. Address of Operator 207 S. 4th Street, Artesia, NM 88210		10. Field and Pool, or Wildcat X Und. Atoka-Yeso
e. Location of Well UNIT LETTER G LOCATED 2310' FEET FROM THE North LINE 1650 FEET FROM THE East LINE OF SEC. 27 TWP. 18S RGE. 26E NMPM		17. County Eddy
19. Proposed Depth Approx. 3250		19A. Formation Yeso
20. Rotary or C.R. Rotary		21. Kind & Status Plug. Bond Blanket
21B. Drilling Contractor Stewart Bros.		22. Approx. Date Work will start ASAP

PROPOSED CASING AND CEMENT PROGRAM					
SIZE OF HOLE	SIZE OF CASING	WEIGHT PER FOOT	SETTING DEPTH	SACKS OF CEMENT	EST. TOP
9 1/2"	7"	20#	approx. 1120	550 sx.	circulate
6 1/4"	4 1/2"	9.5#	approx. 3250	300 sx.	circulate

Propose to drill and test the Yeso and intermediate formations. Casing will be set at least 100' below the Artesian Water Zone, and 4 1/2" production string will be set at TD, all casing circulated to the surface. Will perforate and stimulate as needed for production.

MUD PROGRAM: F.W. gel to 1120, fresh water to TD.

BOP PROGRAM: BOP's will be installed on the 7" casing and tested, pipe rams tested daily for operational, blind rams on trips.

APPROVAL VALID FOR 180 DAYS  
PERMIT EXPIRES 8-17-81  
UNLESS DRILLING UNDERWAY

ABOVE SPACE DESCRIBE PROPOSED PROGRAM: IF PROPOSAL IS TO DEEPEN OR PLUG BACK, GIVE DATA ON PRESENT PRODUCTIVE ZONE AND PROPOSED NEW PRODUCTION ZONE. GIVE BLOWOUT PREVENTER PROGRAM, IF ANY.

I hereby certify that the information above is true and complete to the best of my knowledge and belief.

Signed Glenn R. Lopez Title Geographer Date 2-10-81

(This space for State Use)

APPROVED BY W. A. Gressett TITLE SUPERVISOR, DISTRICT II DATE FEB 17 1981

CONDITIONS OF APPROVAL, IF ANY:

Notify N.M.O.C.C. in sufficient time to witness cementing the 7" casing

N. MEXICO OIL CONSERVATION COMMISS.  
WELL LOCATION AND ACREAGE DEDICATION PLAT

Form C-102  
Supersedes C-128  
Effective 1-1-65

All distances must be from the outer boundaries of the Section.

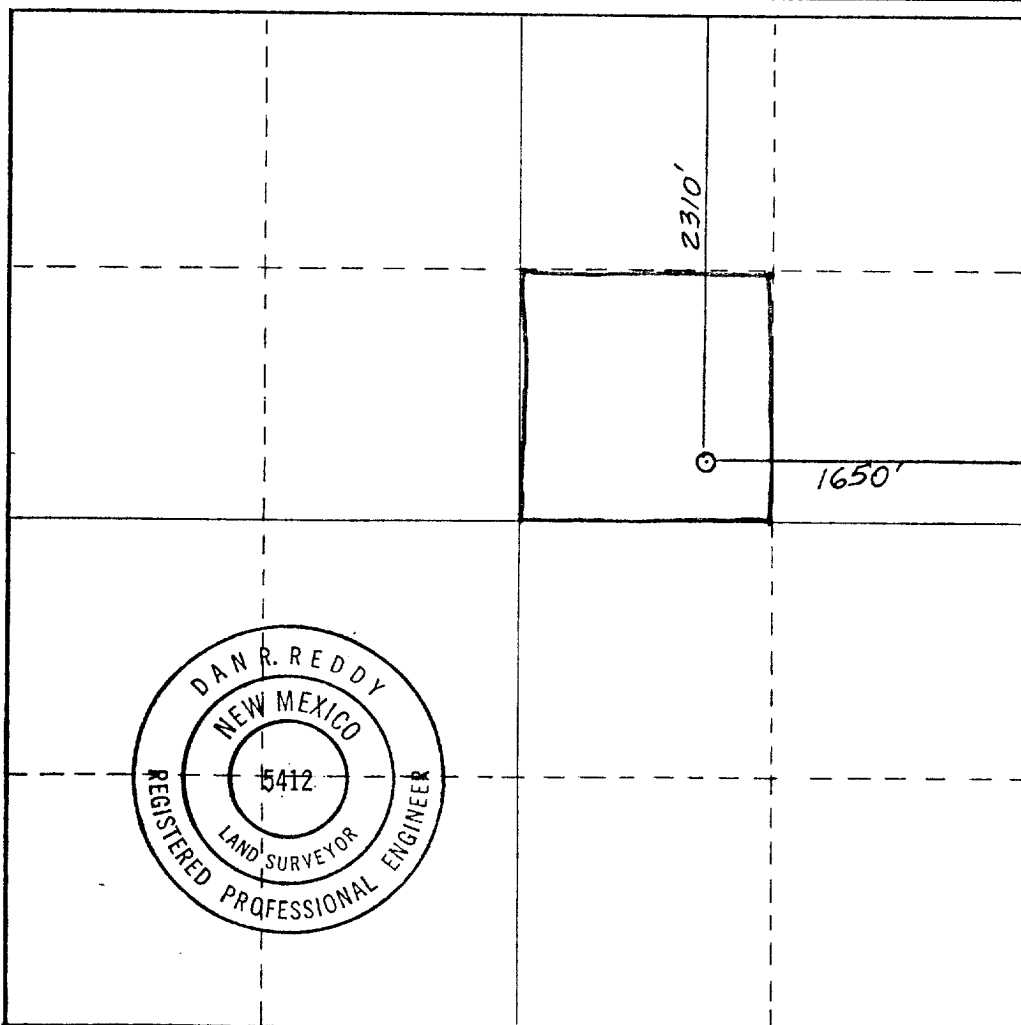
Operator <b>YATES PETROLEUM CORPORATION</b>			Lease <b>Young PJ</b>		Well No. <b>1</b>
Unit Letter <b>G</b>	Section <b>27</b>	Township <b>18 South</b>	Range <b>26 East</b>	County <b>Eddy</b>	
Actual Footage Location of Well: <b>2310</b> feet from the <b>North</b> line and <b>1650</b> feet from the <b>East</b> line					
Ground Level Elev. <b>3330.</b>	Producing Formation <b>Yes</b>		Pool <b>Under Atoka - Yes</b>	Dedicated Acreage: <b>40</b> Acres	

1. Outline the acreage dedicated to the subject well by colored pencil or hatchure marks on the plat below.
2. If more than one lease is dedicated to the well, outline each and identify the ownership thereof (both as to working interest and royalty).
3. If more than one lease of different ownership is dedicated to the well, have the interests of all owners been consolidated by communitization, unitization, force-pooling, etc?

☐ Yes ☐ No If answer is "yes," type of consolidation \_\_\_\_\_

If answer is "no," list the owners and tract descriptions which have actually been consolidated. (Use reverse side of this form if necessary.) \_\_\_\_\_

No allowable will be assigned to the well until all interests have been consolidated (by communitization, unitization, forced-pooling, or otherwise) or until a non-standard unit, eliminating such interests, has been approved by the Commission.



CERTIFICATION

I hereby certify that the information contained herein is true and complete to the best of my knowledge and belief.

*Gliserio Rodriguez*  
Name

Gliserio Rodriguez

Position

Geographer

Company

Yates Petroleum Corp.

Date

February 9, 1981

I hereby certify that the well location shown on this plat was plotted from field notes of actual surveys made by me or under my supervision, and that the same is true and correct to the best of my knowledge and belief.

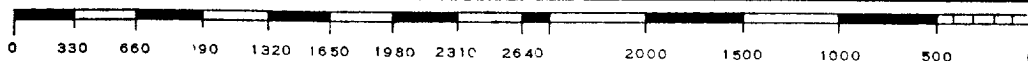
Date Surveyed

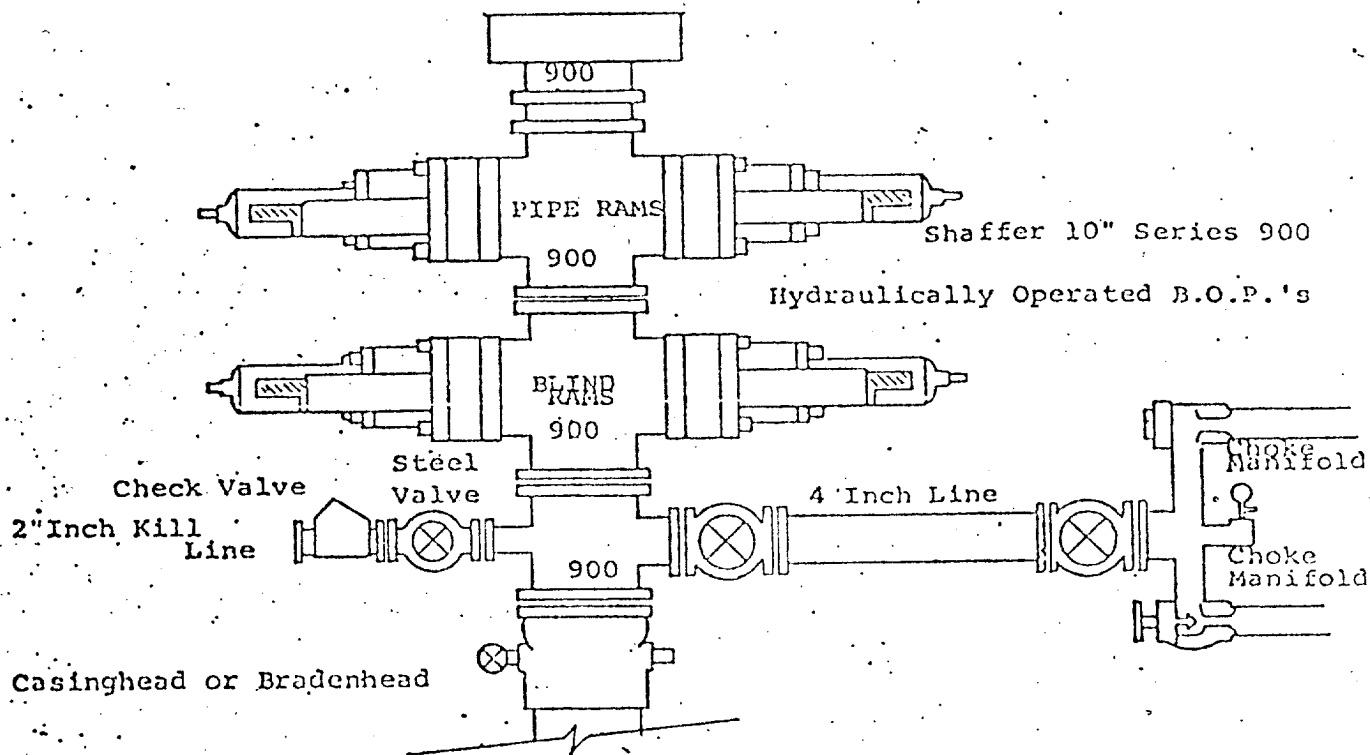
1/31/81

Registered Professional Engineer and/or Land Surveyor

*Dan R. Reddy*  
Certificate No.

NM PE&LS #5412





THE FOLLOWING CONSTITUTE MINIMUM BLOWOUT PREVENTER REQUIREMENTS

1. All preventers to be hydraulically operated with secondary manual controls installed prior to drilling out from under casing.
2. Choke outlet to be a minimum of 4" diameter.
3. Kill line to be of all steel construction of 2" minimum diameter.
4. All connections from operating manifolds to preventers to be all steel. hole or tube a minimum of one inch in diameter.
5. The available closing pressure shall be at least 15% in excess of that required with sufficient volume to operate the B.O.P.'s.
6. All connections to and from preventer to have a pressure rating equivalent to that of the B.O.P.'s.
7. Inside blowout preventer to be available on rig floor.
8. Operating controls located a safe distance from the rig floor.
9. Hole must be kept filled on trips below intermediate casing. Operator not responsible for blowouts resulting from not keeping hole full.
10. D. P. float must be installed and used below zone of first gas intrusion.