

UNITED STATES
DEPARTMENT OF THE INTERIOR
GEOLOGICAL SURVEY

APPLICATION FOR PERMIT TO DRILL, DEEPEN, OR PLUG BACK

1a. TYPE OF WORK

DRILL ☐DEEPEN ☐PLUG BACK ☐

b. TYPE OF WELL

OIL
WELL ☒GAS
WELL ☐

OTHER

SINGLE
ZONE ☐MULTIPLE
ZONE ☐

2. NAME OF OPERATOR

Anadarko Production Company

3. ADDRESS OF OPERATOR

P. O. Box 67, Loco Hills, New Mexico 88255

4. LOCATION OF WELL (Report location clearly and in accordance with any State requirements.)*

At surface

2050' FNL & 560' FWL Sec 4, T18S, R29E
Eddy County, New Mexico

At proposed prod. zone Same

14. DISTANCE IN MILES AND DIRECTION FROM NEAREST TOWN OR POST OFFICE*

7 miles Southwest of Loco Hills Townsite

15. DISTANCE FROM PROPOSED*

LOCATION TO NEAREST
PROPERTY OR LEASE LINE, FT.
(Also to nearest drig. unit line, if any)

962'

16. NO. OF ACRES IN LEASE

2600

18. DISTANCE FROM PROPOSED LOCATION*
TO NEAREST WELL, DRILLING, COMPLETED,
OR APPLIED FOR, ON THIS LEASE, FT.

948'

19. PROPOSED DEPTH

2850'

21. ELEVATIONS (Show whether DF, RT, GR, etc.)

3534

17. NO. OF ACRES ASSIGNED
TO THIS WELL

40

20. ROTARY OR CABLE TOOLS

Rotary

22. APPROX. DATE WORK WILL START*

March 15, 1981

23.

PROPOSED CASING AND CEMENTING PROGRAM

SIZE OF HOLE	SIZE OF CASING	WEIGHT PER FOOT	SETTING DEPTH	QUANTITY OF CEMENT
12-1/4"	8-5/8"	24.0#	350'	200 sx circ or readymixed
7-7/8"	4-1/2"	11.5#	2850'	300 sx - est C. T. 900'

Amend recently approved "Application for Permit to Drill" Ballard Unit Tract 10, Well No. 6 - changing the legal description. The "Application" was approved to drill this well as an "Unorthodox" location since the proposed well was to be located 2050' FNL & 260' FWL. The "Unorthodox" location was approved by Administrative Order NSL-1319.

The proposed location now reads: 2050' FNL & 560' FWL, therefore the proposed location is no longer an unorthodox one. It was necessary to move the proposed location when our personnel discovered there was a fresh water line running through the site.

Well Location and Acreage Dedication Plat attached along with an amended "Surface Use Plan". An Archaeological Survey has been conducted on this proposed location after it was moved 300' East to miss the fresh water line.

IN ABOVE SPACE DESCRIBE PROPOSED PROGRAM: If proposal is to deepen or plug back, give data on present productive zone and proposed new productive zone. If proposal is to drill or deepen directionally, give pertinent data on subsurface locations and measured and true vertical depths. Give blowout preventer program, if any.

24.

SIGNED

TITLE

Area Supervisor

DATE

February 16, 1981

(This space for Federal or State office use)

PERMIT NO.

APPROVAL DATE

APPROVED BY

TITLE

ACTING DISTRICT ENGINEER

DATE

FEB 20 1981

CONDITIONS OF APPROVAL, IF ANY:

USE BRINE WHEN DRILLING SALT BEDS.

**N MEXICO OIL CONSERVATION COMMISSION
WELL LOCATION AND ACREAGE DEDICATION PLAT**

Form C-102
Supersedes C-128
Effective 1-1-65

All distances must be from the outer boundaries of the Section

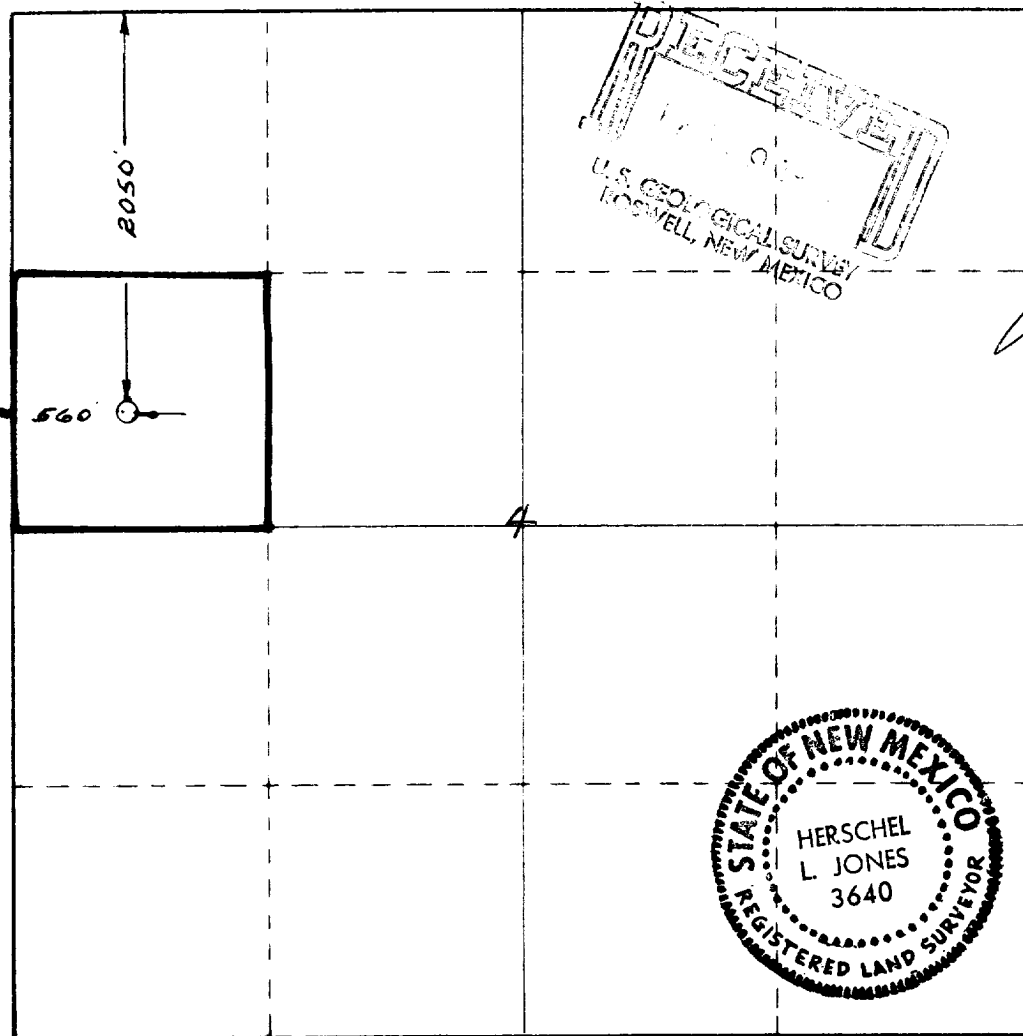
Operator ANADARKO PRODUCTION COMPANY			Lease Ballard Grayburg San Andres Tr. 10		Well No. 6
Tract Letter "E"	Section 4	Township 18 South	Range 29 East	County Eddy	
Actual Footage Location of Well: <div style="display: flex; justify-content: space-between;"> 2050 feet from the North line and 560 feet from the West line </div>					
Ground Level Elev. 3534.2	Producing Formation Grayburg	Pool Loco Hills Queen Grayburg San Andres		Dedicated Acreage: 40 Acres	

1. Outline the acreage dedicated to the subject well by colored pencil or hachure marks on the plat below.
2. If more than one lease is dedicated to the well, outline each and identify the ownership thereof (both as to working interest and royalty).
3. If more than one lease of different ownership is dedicated to the well, have the interests of all owners been consolidated by communitization, unitization, force-pooling, etc?

☒ Yes ☐ No If answer is "yes," type of consolidation UNITIZATION

If answer is "no," list the owners and tract descriptions which have actually been consolidated. (Use reverse side of this form if necessary.) _____

No allowable will be assigned to the well until all interests have been consolidated (by communitization, unitization, forced-pooling, or otherwise) or until a non-standard unit, eliminating such interests, has been approved by the Commission.



CERTIFICATION

I hereby certify that the information contained herein is true and complete to the best of my knowledge and belief

Jerry E. Buckles

 Jerry E. Buckles
 Position

Area Superintendent

Company

Anadarko Production Co.

Date

2/13/81

I hereby certify that the well location shown on this plat was plotted from field notes of actual surveys made by me or under my supervision, and that the same is true and correct to the best of my knowledge and belief.

Date Surveyed

Feb. 12, 1981

Registered Professional Engineer and/or Land Surveyor

Herschel L. Jones

 Certificate No.

3640

0 330 660 990 1320 1650 1980 2310 2640 2000 1500 1000 500

Anadarko
PRODUCTION COMPANY

A
Penhandle
Eastern
Company

P. O. Box 67 • Loco Hills, New Mexico 88255 • (505) 677-2411

February 16, 1981

Bureau of Land Management
P. O. Box 1778
Carlsbad, New Mexico 88220

Gentlemen:

Anadarko wishes to amend the "Surface Use and Operation Plan" for the drilling of their Ballard Grayburg San Andres Unit Tract No. 10, Well No. 6 to read:

2050' FNL & 560' FWL Sec. 4, T18S, R29E
Eddy County, New Mexico.

Items No. 1 and No. 2 are amended to read as follows:

1. Existing Roads - A small scale map is attached (Exhibit #1). It shows the location of this well in relation to Loco Hills, New Mexico Townsite.

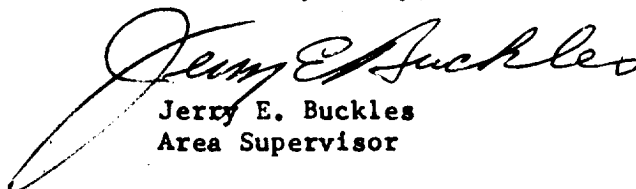
A larger scale map (Exhibit #2) shows State Highway #360 and County Road #139 in blue. The existing caliche roads are shown in orange. The nearest caliche road is now located approximately 1150' West of this drill site.

2. Planned Access Roads - A 12' wide caliche road is to be built between this drill site and an existing caliche road which is approximately 1150' West. This new road is shown as a dashed green line on Exhibit #2.

There will be no fence to cut or cattleguard to set.

Items No. 3 through 13 remain the same.

Yours very truly,



Jerry E. Buckles
Area Supervisor

JEB/rk

This data sheet is provided in reference to the attached Application for Permit to Drill: Anadarko's Ballard Grayburg San Andres Unit Tract N 10, Well No. 6.

1. Location: 2050' FNL & 260' FWL Sec. 4, T18S, R29E, Eddy County, New Mexico
2. Elevation: 3535.4 GL
3. Geological Name of Surface Formation: Triassic-Doakum (Santa Rosa)
4. Type of Drilling Tools to be Utilised: Rotary Tools
5. Proposed Drilling Depth: 2850'

6. Tops of Important Geological Markers:

T. Salt - - - -	250'	7-Rivers - - - -	1300'
B. Salt - - - -	760'	Queen - - - -	1925'
Tansill - - - -	815'	Grayburg - - - -	2330'
Yates - - - -	920'	San Andres - - - -	2750'

7. Estimated Depth of Anticipated Water, Oil or Gas:

Oil - 2520' - 2750'

8. Casing Program:

8-5/8" - 24.0#, K-55 - New
4-1/2" - 10.5#, K-55 - New

9. Setting Depth of Casing:

8-5/8" - 350' - 200 sx Class H w/2% CaCL
4-1/2" - 2850' - 300 sx Class C 50/50 Posmix w/6# Salt/sx & 2% gel

10. Specifications for Pressure Control Equipment:

This Warton Rig is equipped with a Series 900 BOP with 4" Blind Rams, kill line and choke manifold. Koomey Hydraulic Controls and Accumulator with remote controls. When nipping up, test BOP and Choke to 500 psi. Operate BOP equipment once a day, or as directed by Company Representative.

11. Mud Program:

Drill with Fresh Water Native Mud to within 300' of T D; gel will be added at this point to increase viscosity and clean hole prior to running casing.

12. Testing, Logging & Coring Program:

- a. Testing: No drill stem tests will be conducted.
- b. Coring: No coring is planned.
- c. Logging: Open Hole logs will be run prior to running 4 1/2" casing.

13. Potential Hazards:

None are expected. Above described BOP should take care of any blowout problems. Numerous wells have been drilled in this area without problems.

14. Anticipated Starting Date & Duration:

Plan to begin drilling operations during February, 1981. Approximately 6 days will be required to drill the well and 2 weeks for completion.

15. Other Facets:

None

DEPARTMENT OF THE INTERIOR

GEOLOGICAL SURVEY

NM 000

APPLICATION FOR PERMIT TO DRILL, DEEPEN, OR PLUG BACK

1a. TYPE OF WORK

DRILL ☒DEEPEN ☐PLUG BACK ☐

b. TYPE OF WELL

OIL
WELL ☒GAS
WELL ☐

OTHER

SINGLE
ZONE ☐MULTIPLE
ZONE ☐

2. NAME OF OPERATOR

Anadarko Production Company

3. ADDRESS OF OPERATOR

P. O. Box 67, Loco Hills, New Mexico 88255

4. LOCATION OF WELL (Report location clearly and in accordance with any State requirements.)

At surface

2050' FNL & 260' FWL Sec. 4, T18S, R29E

At proposed prod. zone

Same

Eddy County, New Mexico

14. DISTANCE IN MILES AND DIRECTION FROM NEAREST TOWN OR POST OFFICE*

7 miles Southwest of Loco Hills Townsite

10. DISTANCE FROM PROPOSED*

LOCATION TO NEAREST

PROPERTY OR LEASE LINE, FT.

(Also to nearest drlg. unit line, if any)

1213'

18. DISTANCE FROM PROPOSED LOCATION*

TO NEAREST WELL, DRILLING, COMPLETED,
OR APPLIED FOR, ON THIS LEASE, FT.

923

16. NO. OF ACRES IN LEASE

2600

19. PROPOSED DEPTH

2850'

17. NO. OF ACRES ASSIGNED
TO THIS WELL

40

20. ROTARY OR CABLE TOOL

Rotary

21. ELEVATIONS (Show whether DF, RT, GR, etc.)

3535.4 GL

22. APPROX. DATE WORK WILL START*

Feb. 10, 1981

23.

PROPOSED CASING AND CEMENTING PROGRAM

SIZE OF HOLE	SIZE OF CASING	WEIGHT PER FOOT	SETTING DEPTH	QUANTITY OF CEMENT
12-1/4"	8-5/8"	24.0#	350'	200' sx circ. or readymix
7-7/8"	4-1/2"	10.5#	2850'	300' sx - est. C. T. 900'

1. Rig up rotary tools.
2. Drill to approximately 350'; set & circulate or ready-mix cement to surface on 8-5/8" casing. Install & test Series 900 Double Ram Hydraulic Blowout Preventor.
3. Drill to TD (approximately 2850'); run Open Hole logs.
4. Set & cement 4 1/2" casing at TD; estimated cement top = 900'.
5. Perforate, acidize and fracture treat Grayburg zone.
6. Run 2-3/8" tubing, rods & bottom-hole pump; install pumping equipment and place well on production.

Note: An agreement has been reached with Bogle Farms concerning surface damages.

IN ABOVE SPACE DESCRIBE PROPOSED PROGRAM: If proposal is to deepen or plug back, give data on present productive zone and proposed new productive zone. If proposal is to drill or deepen directionally, give pertinent data on subsurface locations and measured and true vertical depths. Give blowout preventer program, if any.

24.

SIGNED

Area Supervisor

DATE January 28, 1981

(This space for Federal or State office use)

PERMIT NO.

APPROVAL DATE

APPROVED BY

TITLE

DATE

CONDITIONS OF APPROVAL, IF ANY:

USE BRINE WHEN DRILLING SALT BEDS.

*See Instructions On Reverse Side

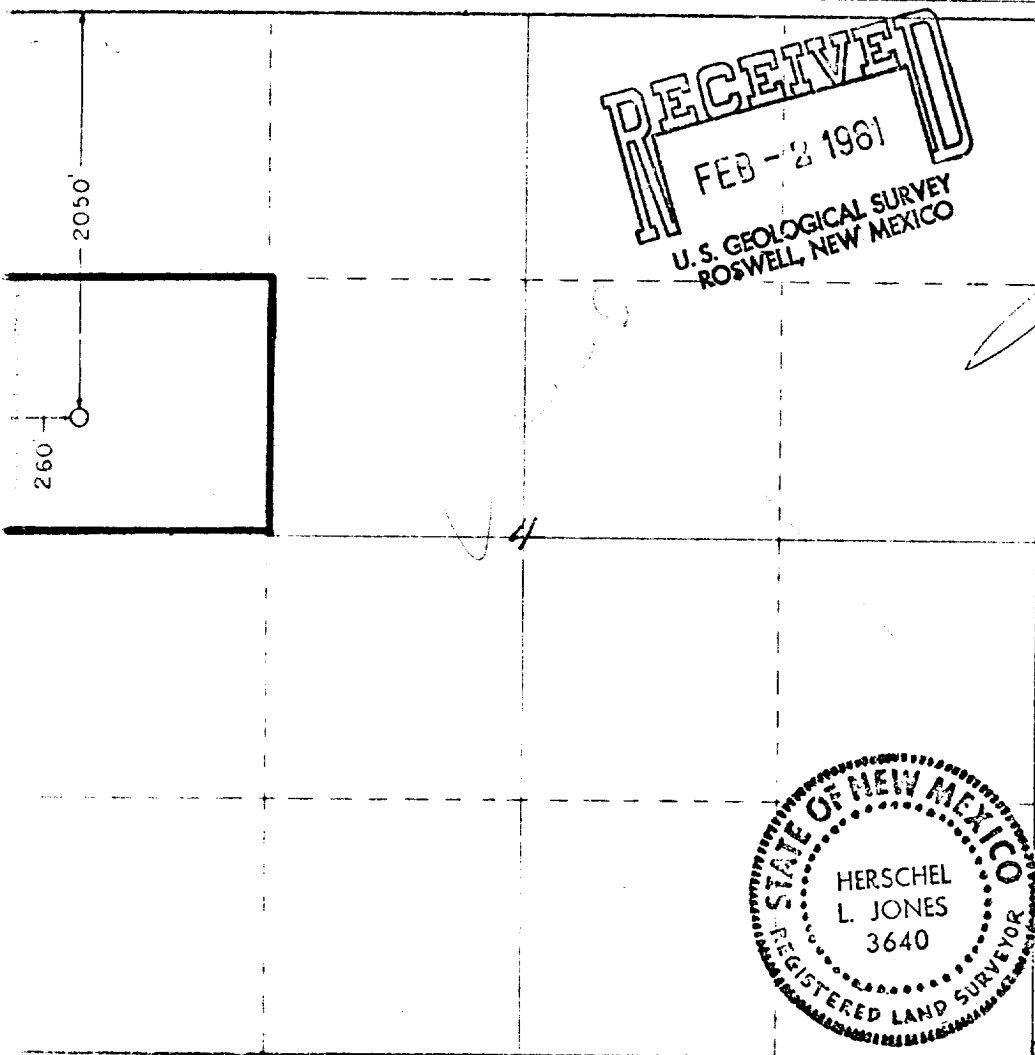
Operator ANADARKO PRODUCTION COMPANY			Lease Ballard Greyburg San Andres Tr. 10		Well No. 6
Section "E"	Section 4	Township 18 South	Range 29 East	County Eddy	
Well Location (Section of Well)					
2050 feet from the North line and		260 feet from the West line			
Well Type, Elev. 1515.4	Producing Formation Greyburg	Pool Loco Hills - Queen Greyburg - San Andres	Estimated Acreage 40 Acres		

1. Outline the acreage dedicated to the subject well by colored pencil or hachure marks on the plat below.
2. If more than one lease is dedicated to the well, outline each and identify the ownership thereof (both as to working interest and royalty).
3. If more than one lease of different ownership is dedicated to the well, have the interests of all owners been consolidated by communitization, unitization, force-pooling, etc?

☒ Yes ☐ No If answer is "yes," type of consolidation unitization

If answer is "no," list the owners and tract descriptions which have actually been consolidated. (Use reverse side of this form if necessary.)

No allowable will be assigned to the well until all interests have been consolidated (by communitization, unitization, forced-pooling, or otherwise) or until a non-standard unit, eliminating such interests, has been approved by the Commission.



CERTIFICATION

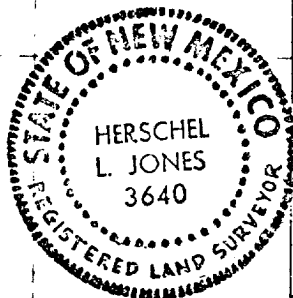
I hereby certify that the information contained herein is true and complete to the best of my knowledge and belief.

Jerry E. Buckles
Jerry Buckles

Position
Area Superintendent
Company
Anadarko Production Co.

Date
1-26-61

I hereby certify that the well location shown on this plat was plotted from field notes of actual surveys made by me or under my supervision, and that the same is true and correct to the best of my knowledge and belief.



Witness my hand and seal
this 26th day of January, 1961
at Roswell, New Mexico

Herschel L. Jones
Herschel L. Jones
3640