

UNITED STATES
DEPARTMENT OF THE INTERIOR

GEOLOGICAL SURVEY

APPLICATION FOR PERMIT TO DRILL, DEEPEN, OR PLUG BACK

1a. TYPE OF WORK

DRILL ☒DEEPEN ☐PLUG BACK ☐

b. TYPE OF WELL

OIL
WELL ☒GAS
WELL ☐OTHER ☐SINGLE
ZONE ☒MULTIPLE
ZONES ☐

2. NAME OF OPERATOR

WILLIAM A. & EDWARD R. HUDSON ✓

3. ADDRESS OF OPERATOR

Box #198, Artesia, New Mexico 88210

4. LOCATION OF WELL (Report location clearly and in accordance with any State requirements)

At surface

2615' from south and 380' from east lines of
Section 25-17S-31E

At proposed prod. zone

14. DISTANCE IN MILES AND DIRECTION FROM NEAREST TOWN OR POST OFFICE*

6 miles SW of Maljamar, New Mexico

15. DISTANCE FROM PROPOSED*

LOCATION TO NEAREST

PROPERTY OR LEASE LINE, FT. 380'

(Also to nearest drlg. unit line, if any)

18. DISTANCE FROM PROPOSED LOCATION*

TO NEAREST WELL, DRILLING, COMPLETED,
OR APPLIED FOR, ON THIS LEASE, FT. 800'

16. NO. OF ACRES IN LEASE

19. PROPOSED DEPTH

4150'

17. NO. OF ACRES ASSIGNED
TO THIS WELL

Waterflood Project

20. ROTARY OR CABLE TOOLS

Rotary

21. ELEVATIONS (Show whether DF, RT, GR, etc.)

3881 ground

22. APPROX. DATE WORK WILL START*

Sept. 15, 1981

23.

PROPOSED CASING AND CEMENTING PROGRAM

SIZE OF HOLE	SIZE OF CASING	WEIGHT PER FOOT	SETTING DEPTH	QUANTITY OF CEMENT
12-1/4"	8-5/8" OD	24# J-55	805'	600 sx Class "C" + 2% CaCl.
7-7/8"	5 1/2" OD	20.5# J-55 15.5#	4150'	400 sx. C1. "C"

It is proposed to drill this well with rotary tools to a depth of approximately 4150'. Production string will be cemented near bottom, and pays will be perforated and treated with acid and frac. All casing will be new. See attachment for other data.

IN ABOVE SPACE DESCRIBE PROPOSED PROGRAM: If proposal is to deepen or plug back, give data on present productive zone and proposed new productive zone. If proposal is to drill or deepen directionally, give pertinent data on subsurface locations and measured and true vertical depths. Give blowout preventer program, if any.

24.

SIGNED

Ralph L. Gray

TITLE

Consulting Engineer

DATE

April 21, 1981

(This space for Federal or State office use)

PERMIT NO.

APPROVED

APPROVAL DATE

(Or: *By*) **GEORGE H. STEWART**

APPROVED BY

CONDITIONS OF APPROVAL, IF ANY

FOR

JAMES A. GILLHAM
DISTRICT SUPERVISOR

TITLE

DATE

*See Instructions On Reverse Side

RECEIVED

APR 22 1981

**U.S. GEOLOGICAL SURVEY
ARTESIA, NEW MEXICO**

ADDITIONAL DATA

PUCKETT "B" #30

1. Surface formation is recent sands and caliche.
2. Estimated tops:

T. Anhydrite	-	715'
T. Salt	- - - -	875'
B. Salt	- - - -	1915'
T. Red Sand	- -	3020'
3. It is expected that oil and gas will be encountered within the depths of 3800'-4150'.
4. Casing (See Form 9-331 C)
5. Pressure Control Equipment (See attached diagram)
6. No special mud will be used. Drilling will be done with water and natural mud formed by drilling red beds and shales. Before running casing, some mud of suitable qualities will be spotted to keep hole clean.
7. Auxiliary Equipment - Not applicable.
8. No tests will be made before cementing casing, and no cores will be taken. Logs will be Gamma-ray and Compensated Neutron and Cement Bond log.
9. No abnormal pressures or temperatures are anticipated, or special hazards.
10. It is expected drilling will be commenced about Sept. 15, 1981, and well should be completed within 60 days after reaching T.D.

N MEXICO OIL CONSERVATION COMMISS
WELL LOCATION AND ACREAGE DEDICATION PLAT

Form C-102
 Supersedes C-128
 Effective 1-1-65

All distances must be from the outer boundaries of the Section.

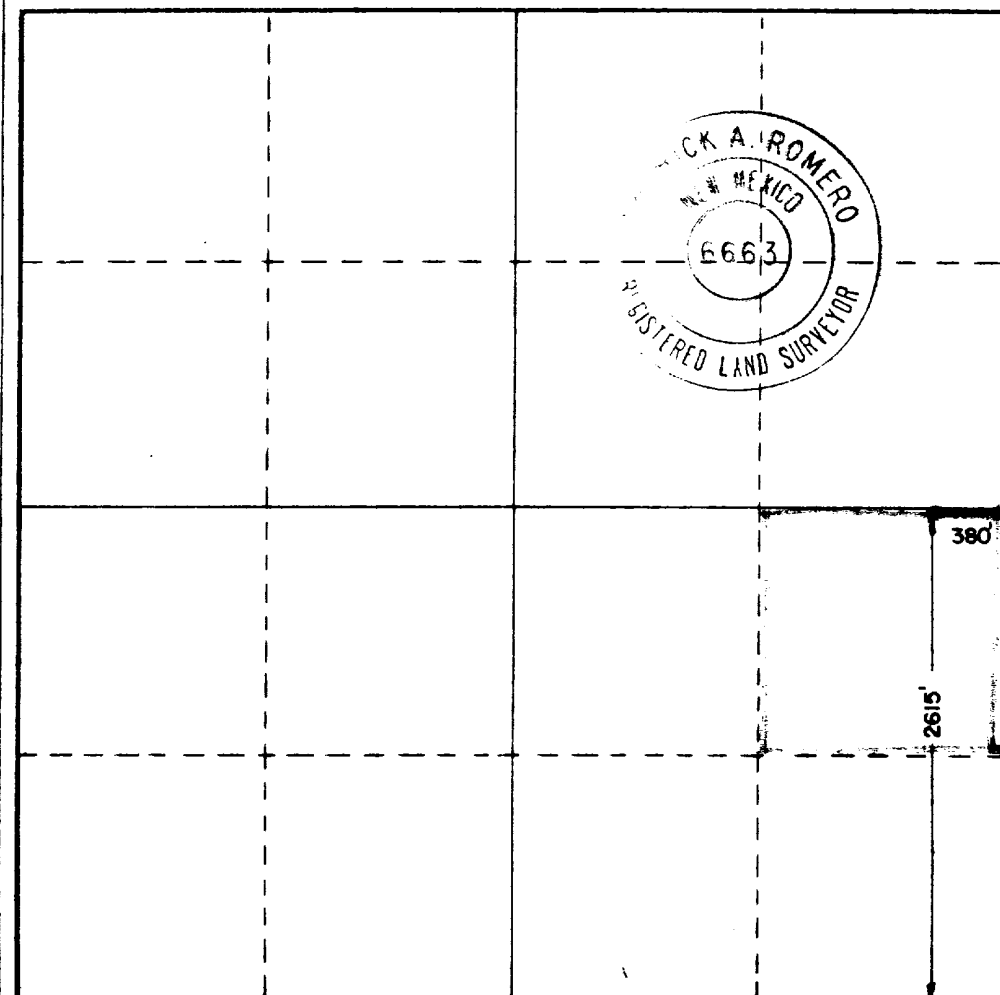
Operator WILLIAM A. & EDWARD R. HUDSON			Lease PUCKETT "B"		Well No. 30
Unit Letter I	Section 25	Township 17 SOUTH	Range 31 EAST	County EDDY	
Actual Footage Location of Well: 2615 feet from the SOUTH line and 380 feet from the EAST line					
Ground Level Elev. 3881.3	Producing Formation Grayburg San Andres		Pool Maljamar G-SA		Dedicated Acreage: Acres

1. Outline the acreage dedicated to the subject well by colored pencil or hachure marks on the plat below.
2. If more than one lease is dedicated to the well, outline each and identify the ownership thereof (both as to working interest and royalty).
3. If more than one lease of different ownership is dedicated to the well, have the interests of all owners been consolidated by communitization, unitization, force-pooling, etc?

☐ Yes ☐ No If answer is "yes," type of consolidation _____

If answer is "no," list the owners and tract descriptions which have actually been consolidated. (Use reverse side of this form if necessary.) _____

No allowable will be assigned to the well until all interests have been consolidated (by communitization, unitization, forced-pooling, or otherwise) or until a non-standard unit, eliminating such interests, has been approved by the Commission.



CERTIFICATION

I hereby certify that the information contained herein is true and complete to the best of my knowledge and belief.

Name *Rayn L May*
 Position Consulting Engineer
 Company WILLIAM A. & EDWARD R. HUDSON

Date April 21, 1981

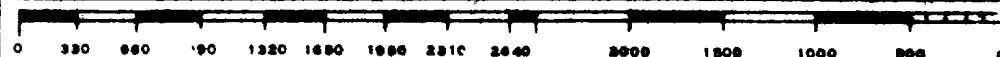
I hereby certify that the well location shown on this plat was plotted from field notes of actual surveys made by me or under my supervision, and that the same is true and correct to the best of my knowledge and belief.

Date Surveyed

4-1-81

Registered Professional Engineer and/or Land Surveyor

Patrick A. Romero
 Certificate No. JOHN W. WEST 876
PATRICK A. ROMERO 6663
Ronald J. Eldon 3239



SURFACE USE AND OPERATIONS PLAN

WILLIAM A. & EDWARD R. HUDSON

Puckett "B" well #30

2615' from the south and 380' from the east lines of Section 25-17S-31E
Eddy County, New Mexico
Lease No. LC-029415-B
(Development Well)

APR 25 1981

Following is the Surface Use and Operations Plan for the drilling and operation of the well.

1 & 2. EXISTING ROADS AND PLANNED ACCESS

Exhibit "A" shows a map of the general area. The location of the well can be reached by going west from Maljamar, New Mexico, on U.S. Highway #82 a distance of about 4-1/3 miles. Turn southeastward at cattleguard marked by a "Hudson" sign. Go about 9/10 of a mile on dirt road, then go south approximately 1/4 mile. Turn west on lease road for 1/8 mile, then turn south and go about 1-1/8 miles. Access road will go directly east from this point about 1/8 mile to location. This map shows wells, roads, tank batteries, camp, office, water injection plant and flow lines, including proposed flow line for this well. Access road will be constructed of caliche.

3. LOCATION OF EXISTING WELLS

Wells are shown on Exhibit "A". Producing wells are indicated by solid dots and water injection wells are indicated by circles.

4. LOCATION OF EXISTING AND/OR PROPOSED FACILITIES

Proposed well location is shown on Exhibit "A" by the red circle. Fluids produced from well will go to present tank battery and new flow line connecting well into present gathering system is shown by the blue dashed line. A right-of-way will be bladed for flow line.

5. LOCATION AND TYPE OF WATER SUPPLY

Water for drilling the well will be obtained from the water injection system present on lease.

6. SOURCE OF CONSTRUCTION MATERIALS

Caliche for surfacing access road and location pad will be obtained from a surface pit located in the SE/4 SW/4 of Section 25, near well #20. This is located on Federal land.

7. METHOD OF HANDLING WASTE DISPOSAL

- A. Drill cuttings will be disposed of in drilling pits.
- B. Drilling fluids will be allowed to evaporate in the drilling pits until pits are dry.
- C. Oil produced during tests will be stored in test tanks, or stored in battery until sold.

- D. Current laws and regulations pertaining to the disposal of human waste will be complied with.
- E. Trash, waste paper, garbage and junk will be buried in separate trash pit and covered with a minimum of 24 inches of dirt. Location of trash pit is shown on Exhibit "C".
- F. All trash and debris will be buried or removed from well site within 30 days after finishing drilling and/or completion operations.

8. ANCILLARY FACILITIES

None.

9. WELLSITE LAYOUT

- A. Exhibit "C" shows the relative location and dimensions of the well pad, mud pits, reserve pit, trash pit and location of major rig components.
- B. Only minor levelling of the well site will be required.
- C. Pits will be unlined.

10. PLANS FOR RESTORATION OF THE SURFACE

- A. After completion of drilling and/or completion operations, all equipment and other material not needed for operations will be removed. Pits will be filled and location cleaned of all trash and junk to leave well site in as good a condition as possible.
- B. Any unguarded pits containing fluids will be fenced until they are filled.
- C. After abandonment of the well, surface restoration will be in accordance with agreement with the surface owner. Pits will be filled and location cleaned. The pit area, well pad, and all unneeded access roads will be ripped to promote revegetation. Rehabilitation should be accomplished within 90 days after abandonment.

11. OTHER INFORMATION

- A. Topography: Land surface is relatively flat with small hill areas and sand dunes.
- B. Soil: Soil is deep sand underlain by caliche.
- C. Flora and Fauna: The vegetative cover is generally sparse and consists of mesquite, yucca, shinny oak and very little native grass. Wildlife is typical of semi-arid desert land and includes coyotes, rabbits, rodents, reptiles, dove and quail.
- D. Ponds and Streams: There are no rivers, streams, lakes or ponds in the area.
- E. Residences and Other Structures: There are personnel dwellings, office and waterflood plant in the north half of Section 24 as shown on Exhibit "A".
- F. Land Use: Grazing and hunting in season, although the principal use is production of oil.

12. OPERATOR'S REPRESENTATIVE

The field representative responsible for assuring compliance with the approved surface use and operations plan is as follows:

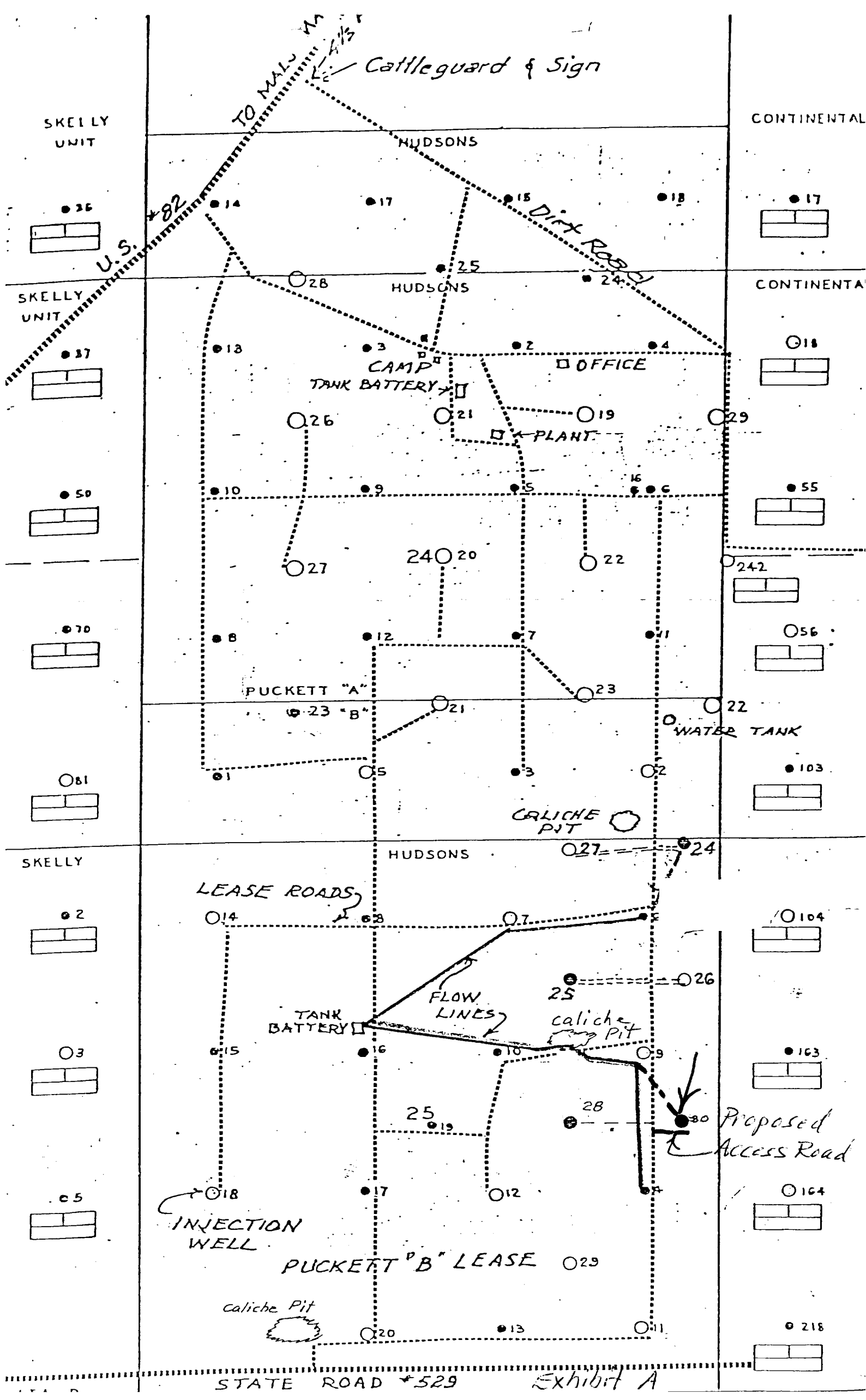
Mr. Dwaine Howard
Resides on lease near office
Home Phone: 676-4311
Office Phone: 676-2266

13. CERTIFICATION

I hereby certify that I, or persons under my direct supervision, have inspected the proposed drillsite and access route; that I am familiar with the conditions which presently exist; that the statements made in this plan are, to the best of my knowledge true and correct, and that the work associated with the operations proposed herein will be performed by William A. & Edward R. Hudson and their contractors and subcontractors in conformity with this plan and the terms and conditions under which it is approved.

4/22/81
Date

Ralph L. Gray
RALPH L. GRAY
CONSULTING ENGINEER.



3905

CONTOUR MAP

3962

3912

BM

3940

13

3950

4

3908

Quarry

39140

PIPELINE

Pump

Sta

24

Water

Inter

Wells

Pumping

3857

3884

3859

3844

3848

Quarry

3877

Quarry

27

269

25

Quarry

3842

3801

38246

3858

Highway Well
3799

34

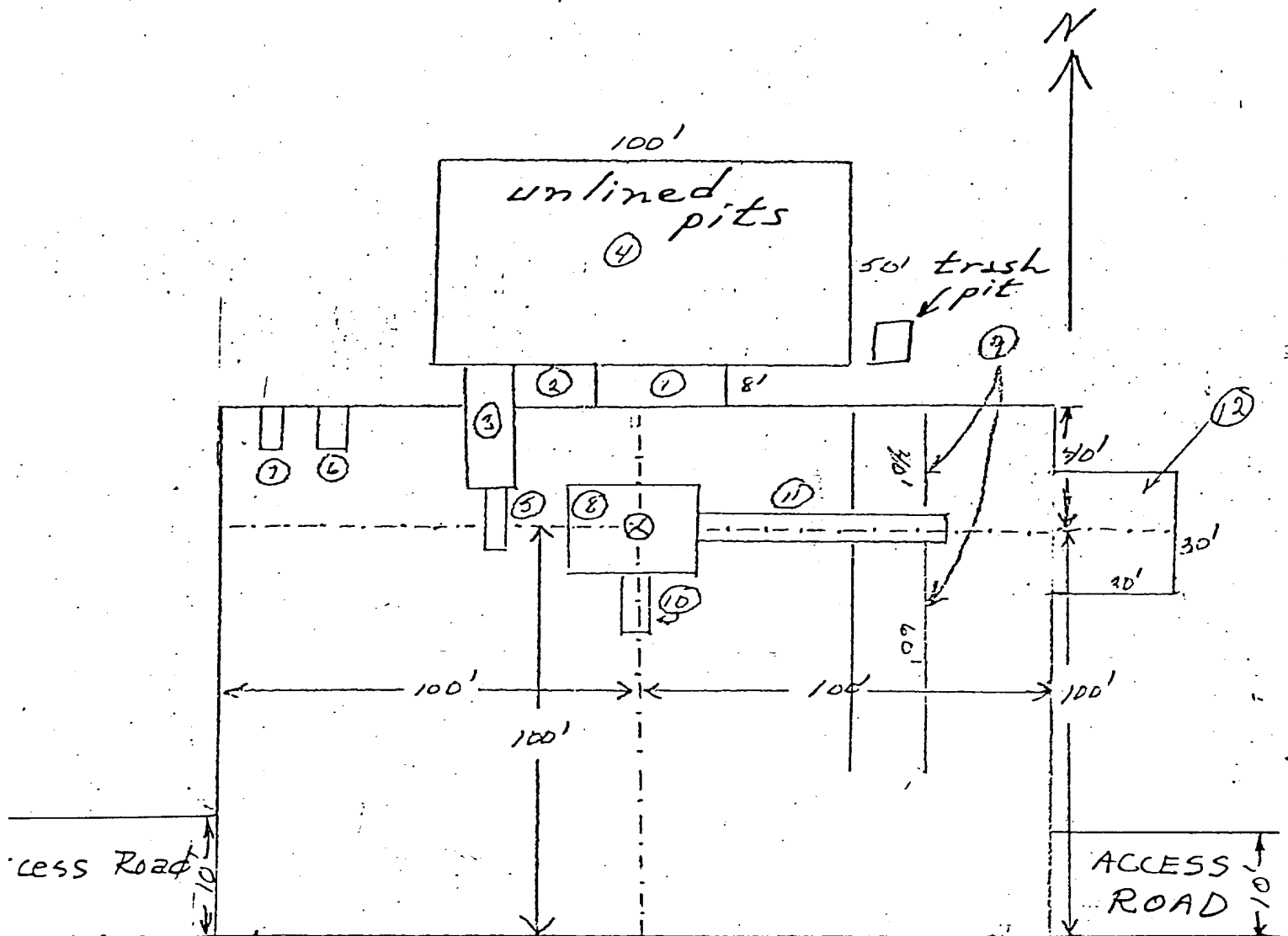
3800

36

3850

PIPELINE

WEK DRILLING CO., INC.
RIG #1 LOCATION & MUD PIT SPECS.



- ① Shale Pit 30' x 8'
- ② Mud Pit 20' x 8'
- ③ Suction Pit 30' x 8'
- ④ Reserve Pit 100' x 50'
- ⑤ Pump

- ⑥ Water Tank
- ⑦ Fuel Tank
- ⑧ Rig
- ⑨ Pipe Racks
- ⑩ Dog House
- ⑪ Cat Walk 60'
- ⑫ Stinger

Schaeffer Type E 10" Series 900 Hydraulic BOP. The waste and debris from this well will be disposed of in a reserve pit and covered up.