

NEW MEXICO OIL CONSERVATION COMMISSION
WE LOCATION AND ACREAGE DEDICATION PLAT

Form C-10,
Superior Edition
Effective 1-1-68

All distances must be from the outer boundaries of the Section

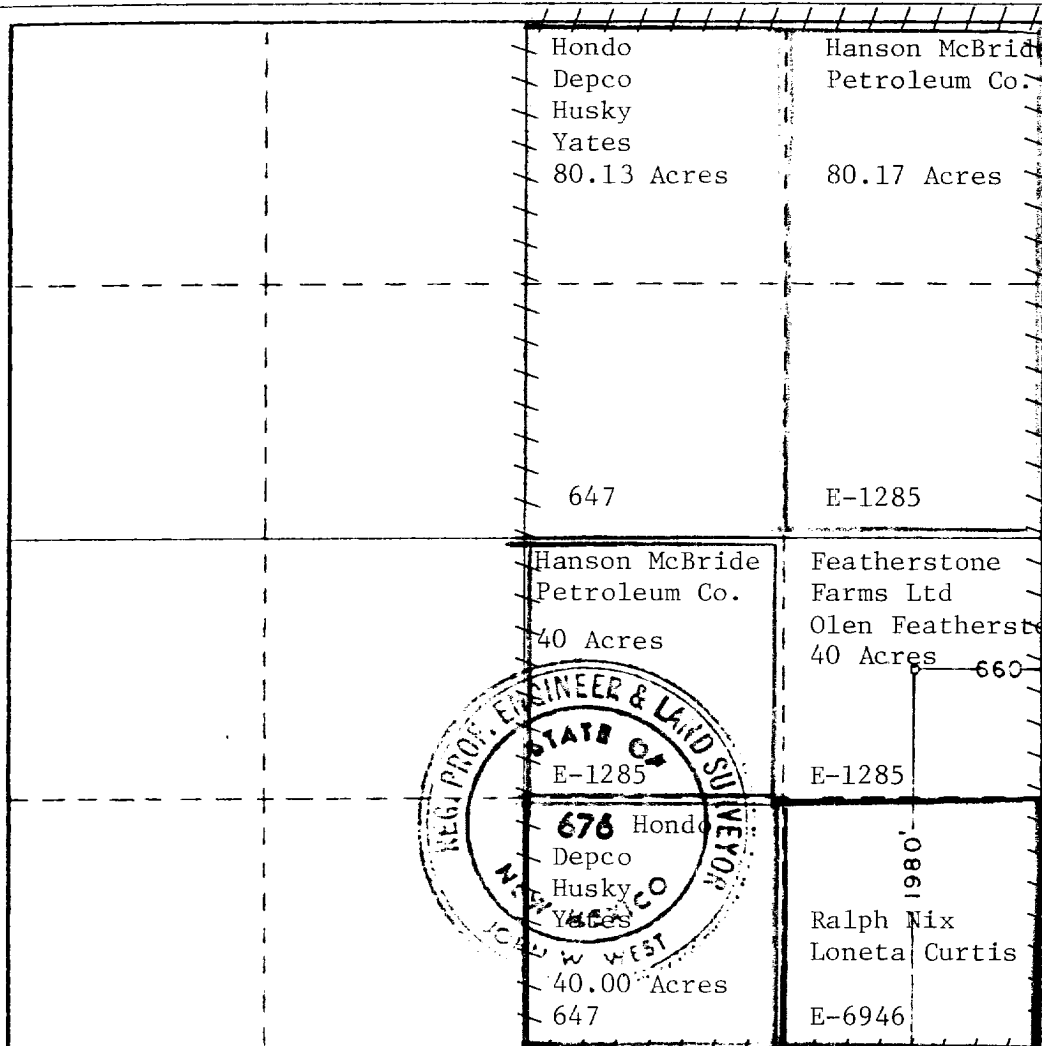
Hondo OIL & GAS CO.		Lease Featherstone State		Well No. 1
Section 3	Township 18 SOUTH	Range 28 EAST	County EDDY	
Actual Well Location of Well:				
660	feet from the EAST line and	1980	feet from the SOUTH line	
Ground Level Elev. 3643.6	Producing Formation Morrow Gas	Pool Undesignated	Dedicated Acreage: 320.30	

1. Outline the acreage dedicated to the subject well by colored pencil or hatchure marks on the plat below.
2. If more than one lease is dedicated to the well, outline each and identify the ownership thereof (both as to working interest and royalty).
3. If more than one lease of different ownership is dedicated to the well, have the interests of all owners been consolidated by communitization, unitization, force-pooling, etc?

☐ Yes ☒ No If answer is "yes," type of consolidation Communitization Applied For

If answer is "no," list the owners and tract descriptions which have actually been consolidated. (Use reverse side of this form if necessary.)

No allowable will be assigned to the well until all interests have been consolidated (by communitization, unitization, forced-pooling, or otherwise) or until a non-standard unit, eliminating such interests, has been approved by the Commission.



CERTIFICATION

I hereby certify that the information contained herein is true and complete to the best of my knowledge and belief.

Name Jerry W. Schmidt
Position Dist. Dir. Supt.
Company Hondo Oil & Gas Company
Date 11/9/81

I hereby certify that the well location shown on this plat was plotted from field notes of actual surveys made by me or under my supervision, and that the same is true and correct to the best of my knowledge and belief.

Date Surveyed 11-4-81
Registered Professional Engineer and/or Land Surveyor

Certificate No. JOHN W. WEST 676
PATRICK A. ROMERO 6843
Ronald J. Erickson 3229