

NEW MEXICO OIL CONSERVATION COMMISSION
WELL LOCATION AND ACREAGE DEDICATION PLAT

RECEIVED

Form No. 1
Supersedes O.C.D. 1
Effective 1-1-75

DEC 7 1981

All distances must be from the outer boundaries of the Section

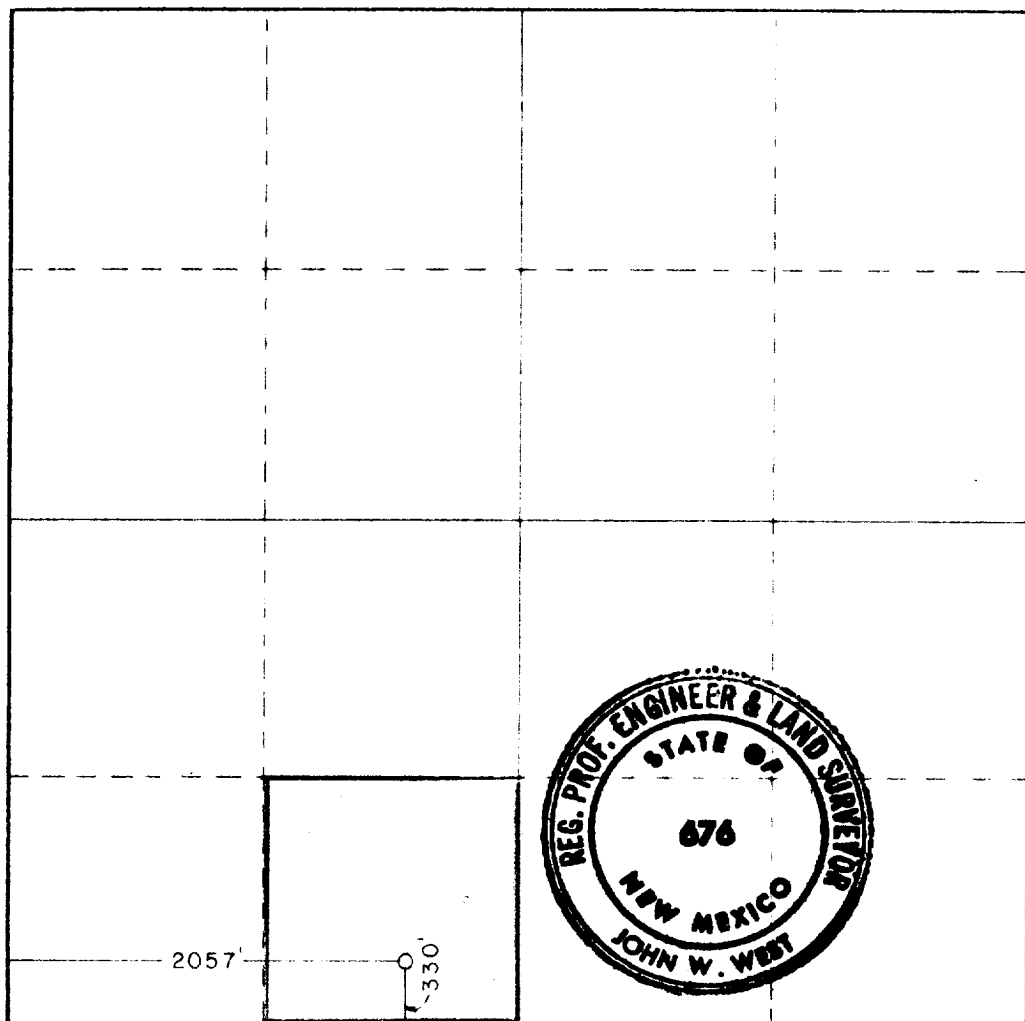
Operator Marnel Pipe & Supply Co.		Lease Elk		O. C. D. 1	
Tract Letter N	Section 16	Township 18 South	Range 28 East	County ARTESIA, OFFICE Eddy	
Actual Footage Location of Well: 330 feet from the South line and 2057 feet from the West line					
Ground Level Elev. 3593.9'	Producing Formation R-G S A	Pool ARTESIA QN GB-SA		Section 40	

1. Outline the acreage dedicated to the subject well by colored pencil or hachure marks on the plat below.
2. If more than one lease is dedicated to the well, outline each and identify the ownership thereof (both as to working interest and royalty)
3. If more than one lease of different ownership is dedicated to the well, have the interests of all owners been consolidated by communitization, unitization, force-pooling, etc?

☐ Yes ☐ No If answer is "yes," type of consolidation _____

If answer is "no," list the owners and tract descriptions which have actually been consolidated (Use reverse side of this form if necessary.) _____

No allowable will be assigned to the well until all interests have been consolidated (by communitization, unitization, forced-pooling, or otherwise) or until a non-standard unit, eliminating such interests, has been approved by the Commission.



CERTIFICATION

I hereby certify that the information contained herein is true and complete to the best of my knowledge and belief.

Ruth Henry
Name

RUTH HENRY

Position

ACCOUNTANT

Company

MARNEL PIPE & SUPPLY CO.

Date

12-7-81

I hereby certify that the well location shown on this plat was plotted from field notes of actual surveys made by me or under my supervision and that the same is true and correct to the best of my knowledge and belief.

Date of survey

Dec. 1, 1981

Registered Professional Engineer and Land Surveyor

John W. West
Certificate No. **JOHN W. WEST**

676

PATRICK A. ROMERO 6665

Ronald J. Eidson 3239

0 330 660 990 1320 1650 1980 2310 2640 2970 3300 3630 3960 4290 4620 4950 5280 5610 5940 6270 6600

