

UNITED STATES
DEPARTMENT OF THE INTERIOR
GEOLOGICAL SURVEYNM OIL & GAS COMMISSION
Drawer DD
Artesia, NM 88210

30-015-24040

APPLICATION FOR PERMIT TO DRILL, DEEPEN, OR PLUG BACK

1a. TYPE OF WORK

DRILL ☒DEEPEN ☐PLUG BACK ☐

b. TYPE OF WELL

OIL
WELL ☒GAS
WELL ☐OTHER ☐SINGLE
ZONE ☐MULTIPLE
ZONE ☐

2. NAME OF OPERATOR

Premier Production ✓

3. ADDRESS OF OPERATOR

324 West Main Artesia, New Mexico 88210

4. LOCATION OF WELL (Report location clearly and in accordance with any State requirements.)*

At surface

660' FSL and 1980' FEL

At proposed prod. zone

same

14. DISTANCE IN MILES AND DIRECTION FROM NEAREST TOWN OR POST OFFICE*

Approx. 24 miles ESE of Artesia, New Mexico

15. DISTANCE FROM PROPOSED*

LOCATION TO NEAREST
PROPERTY OR LEASE LINE, FT.
(Also to nearest drlg. unit line, if any) 660'

16. NO. OF ACRES IN LEASE

320

17. NO. OF ACRES ASSIGNED

TO THIS WELL
40

18. DISTANCE FROM PROPOSED LOCATION*

TO NEAREST WELL, DRILLING, COMPLETED,
OR APPLIED FOR, ON THIS LEASE, FT.

19. PROPOSED DEPTH

3200'

20. ROTARY OR CABLE TOOLS

Rotary

21. ELEVATIONS (Show whether DF, RT, GR, etc.)

3466 GL

22. APPROX. DATE WORK WILL START*

ASAP

23. PROPOSED CASING AND CEMENTING PROGRAM

SIZE OF HOLE	SIZE OF CASING	WEIGHT PER FOOT	SETTING DEPTH	QUANTITY OF CEMENT
12½"	8 5/8"	24# J-55	370'	50 sx circulate
7 7/8" or 6½"	5½" or 4½"	17#-20#	TD	150 sx CIRCULATE

We propose to drill test the San Andres and intermediate formations. Will set approx. 370' of surface casing to shut off gravel and casing. If commercial, will run 5½' or 4½" and stimulate for production.

MUD PROGRAM: FW gel and LCM to TD.

BOP PROGRAM:

IN ABOVE SPACE DESCRIBE PROPOSED PROGRAM: If proposal is to deepen or plug back, give data on present productive zone and proposed new productive zone. If proposal is to drill or deepen directionally, give pertinent data on subsurface locations and measured and true vertical depths. Give blowout preventer program, if any.

24.

SIGNED

TITLE

Operator

DATE

11-18-81

(This space for Federal or State office use)

PERMIT NO.

APPROVED

APPROVAL DATE

APPROVED BY

(Orig. Sgd.) ROGER A. CHAPMAN

TITLE

DATE

CONDITIONS OF APPROVAL, IF

DEC 29 1981

JAMES A. GILLHAM
DISTRICT SUPERVISOR

RECEIVED

DEC 30 1981

O. C. D.
ARTESIA, OFFICE5. LEASE DESIGNATION AND SERIAL NO.
LC 055696

6. IF INDIAN, ALLOTTEE OR TRIBE NAME

7. UNIT AGREEMENT NAME

8. FARM OR LEASE NAME

Yates Premier Federal

9. WELL NO.

#1

10. FIELD AND POOL, OR WILDCAT

Undes. San Andres

11. SEC., T., R., M., OR BLK.
AND SURVEY OR AREA

11-0

Sec. 22-18S-29E

12. COUNTY OR PARISH

Eddy

13. STATE

NM

NEW MEXICO OIL CONSERVATION COMMISSION
WELL LOCATION AND ACREAGE DEDICATION PLAT

Form C-102
Supersedes C-128
Effective 1-1-65

All distances must be from the outer boundaries of the Section.

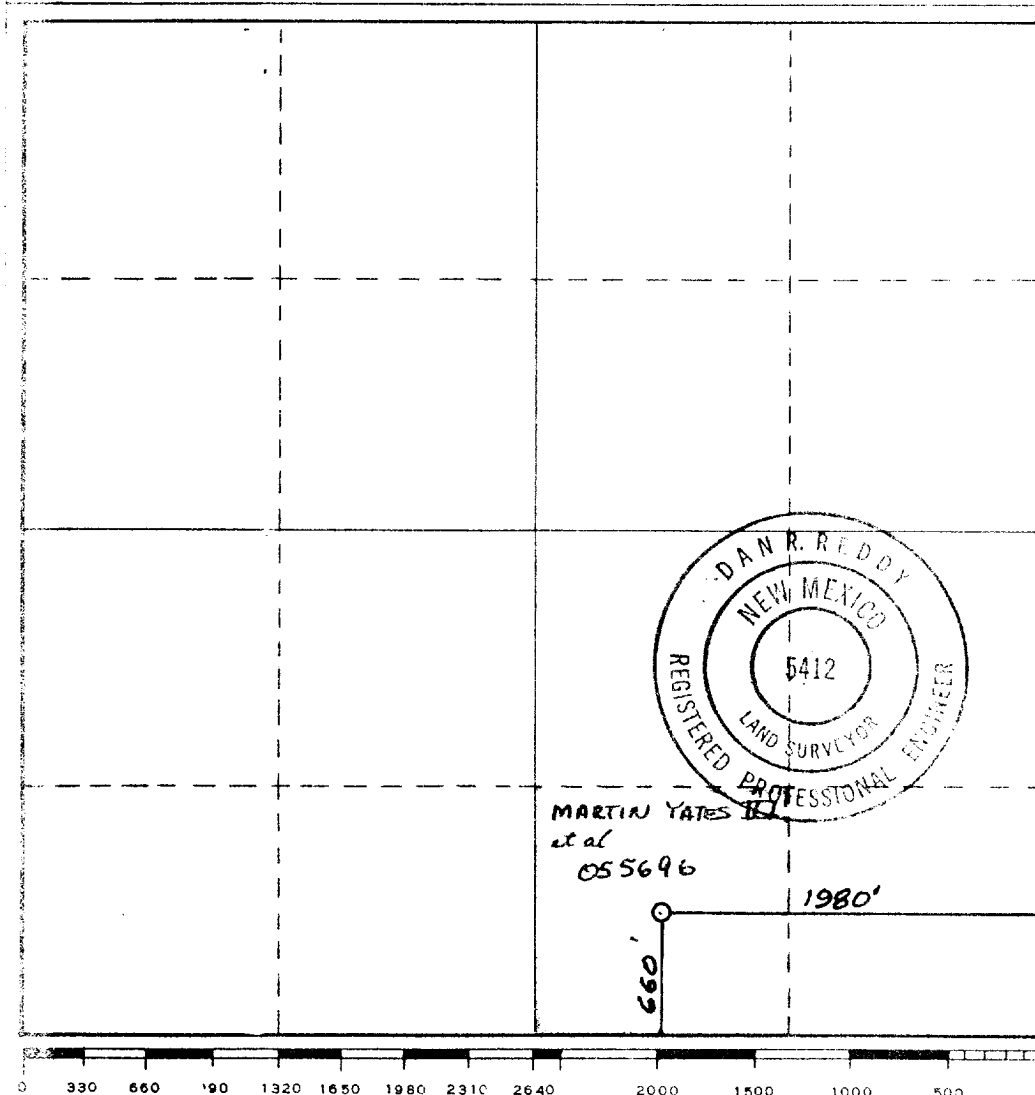
Operator PREMIER PRODUCTION			Lease Yates Premier Federal		Well No. 1
Unit Letter O	Section 22	Township 18 South	Range 29 East	County Eddy	
Actual Footage Location of Well: 660 feet from the South line and 1980 feet from the East line.					
Ground Level Elev. 3466.	Producing Formation P1	Pool TURKEY TRACT SA		Dedicated Acreage: 40 Acres	

1. Outline the acreage dedicated to the subject well by colored pencil or hachure marks on the plat below.
2. If more than one lease is dedicated to the well, outline each and identify the ownership thereof (both as to working interest and royalty).
3. If more than one lease of different ownership is dedicated to the well, have the interests of all owners been consolidated by communitization, unitization, force-pooling, etc?

☐ Yes ☒ No If answer is "yes," type of consolidation _____

If answer is "no," list the owners and tract descriptions which have actually been consolidated. (Use reverse side of this form if necessary.) _____

No allowable will be assigned to the well until all interests have been consolidated (by communitization, unitization, forced-pooling, or otherwise) or until a non-standard unit, eliminating such interests, has been approved by the Commission.



CERTIFICATION

I hereby certify that the information contained herein is true and complete to the best of my knowledge and belief.

Name _____

Position _____

OPERATOR

Company _____

PREMIER PRODUCTION

Date _____

11-11-81

I hereby certify that the well location shown on this plat was plotted from field notes of actual surveys made by me or under my supervision, and that the same is true and correct to the best of my knowledge and belief.

Date Surveyed _____

October 19, 1981

Registered Professional Engineer and/or Land Surveyor

Dan R. Reddy

Certificate No.

NM PE&LS #5412

Premier Production
Yates Premier Fed. #1
660' FSL-1980' FEL
Section 22-T18S-R29E

In conjunction with Form 9-331C, Application for permit to Drill subject well Premier Production submits the following ten items of pertinent information in accordance with USGS requirements:

1. The geologic surface formation is sandy alluvium.
2. The estimate tops the geologic markers are as follows:

Yates	1027'
Seven Rivers	1665'
Queen	2034'
Grayburg	2102'
San Andres	2864'
TD	3200'

3. The estimated depths at which anticipated water and oil formations are expected to be encountered:

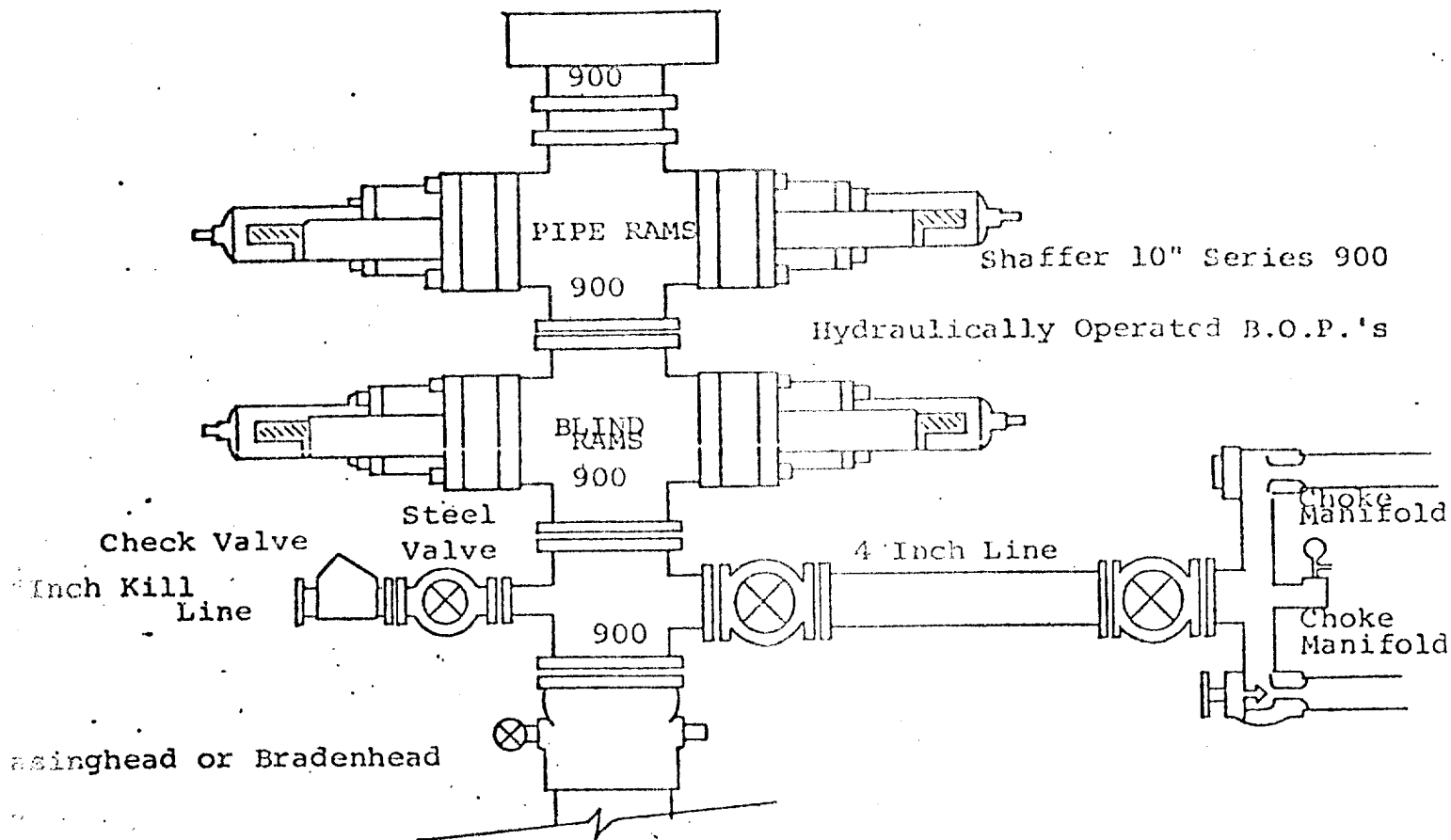
Water	Approximately	200- 240'
-------	---------------	-----------

Oil	S.A.	2970-3030'
-----	------	------------

4. Proposed Casing Program: See Form 9-331C.
5. Pressure Control Equipment: See Form 9-331C and Exhibit B.
6. Mud Program: See Form 9-331C.
7. Auxiliary Equipment: None
8. Testing, Logging and Coring Program:

Samples: 10' samples caught out from under surface casing to TD
DST's: As warranted
9. No abnormal pressures or temperatures are anticipated.
10. Anticipated starting date: As soon as possible after approval.

EXHIBIT B



THE FOLLOWING CONSTITUTE MINIMUM BLOWOUT PREVENTER REQUIREMENTS

1. All preventers to be hydraulically operated with secondary manual controls installed prior to drilling out from under casing.
2. Choke outlet to be a minimum of 4" diameter.
3. Kill line to be of all steel construction of 2" minimum diameter.
4. All connections from operating manifolds to preventers to be all steel. hole or tube a minimum of one inch in diameter.
5. The available closing pressure shall be at least 15% in excess of that required with sufficient volume to operate the B.O.P.'s.
6. All connections to and from preventer to have a pressure rating equivalent to that of the B.O.P.'s.
7. Inside blowout preventer to be available on rig floor.
8. Operating controls located a safe distance from the rig floor.
9. Hole must be kept filled on trips below intermediate casing. Operator not responsible for blowouts resulting from not keeping hole full.
10. D. P. float must be installed and used below zone of first gas intrusion.

EXHIBIT C

