

STATE OF NEW MEXICO
DEPARTMENT OF MINERALS

OIL CONSERVATION DIVISION
P. O. BOX 2088
SANTA FE, NEW MEXICO 87501

30-015-24072
Form C-101
Revised 10-1-78

DATE RECEIVED	
DISTRIBUTION	
SANTA FE	
FILE	
U.S. G.S.	
LAND OFFICE	
REVISION	

JAN 22 1982

O. C. D.
ARTESIA, OFFICE

APPLICATION FOR PERMIT TO DRILL, DEEPEN, OR PLUG BACK

Type of Well: DRILL ☒ DEEPEN ☐ PLUG BACK ☐
 GAS WELL ☒ OTHER ☐ SINGLE ZONE ☐ MULTIPLE ZONE ☐

Yates Petroleum Corporation

207 S. 4th, Artesia, New Mexico 88210

UNIT LETTER F LOCATED 1980 FEET FROM THE North

2310 FEET FROM THE West LINE OF SEC. 25 TWP. 18S R. 26E

1A. Indicate Type of Lease
STATE ☐ FEE ☒
 5. State Oil & Gas Lease No.
 7. Unit Agreement Name
 8. Farm or Lease Name
 Copeland "SM"
 9. Well No.
 1
 10. Field and Pool, or Oil/Gas
 Undesignated Morrow
 11. Locality
 Eddy

2328' GL 3282' GL Blanket Landis Rig #4
 21A. Kind of Surface Plug: Blanket
 21B. Drilling Contractor: Landis Rig #4
 21C. Formation: Morrow
 21D. Method of Casing: Rotary
 22. Approx. Date Work will start: ASAP

PROPOSED CASING AND CEMENT PROGRAM

SIZE OF HOLE	SIZE OF CASING	WEIGHT PER FOOT	SETTING DEPTH	SACKS OF CEMENT	EST. TOP
24"	20"	conductor	80'	redi-mix	
17 1/2"	13 3/8"	48# J-55	Appro. 400'	375 sx	circulated
11 1/2"	8 5/8"	24# J-55	Appro. 1200'	600 sx	circulated
7 7/8"	5 1/2" or 4 1/2"	15.5 - 17# or TD 10.5 - 11.6#		375 sx	

We propose to drill and test the Morrow and intermediate formations. Approximately 400' of surface casing will be set for protection from gravel and caving, and intermediate casing will be set at least 100' below the Artesian water sands, cement circulated on both strings. If commercial will run 5 1/2" or 4 1/2" casing and cement with 600' of cover.

MUD PROGRAM: FW gel & LCM to 1200', water to 5900'. Starch-Drispak-KCL mud to 8800'. Flosal-Drispak-KCL to total depth.

BOP PROGRAM: BOP's and hydril on 8 5/8" casing and tested, pipe rams daily for operational, yellow jacket prior to drilling Wolfcamp (approx. 5900').

GAS NOT DEDICATED.

APPROVAL VALID FOR 180 DAYS
 PERMIT EXPIRES 7-26-82
 UNLESS DRILLING UNDERWAY

NOTE: SPACE DESCRIBE PROPOSED PROGRAM; IF PROPOSAL IS TO DEEPEN OR PLUG BACK, GIVE DATA ON PRESENT PRODUCTIVE ZONE AND PROPOSED NEW PRODUCTIVE ZONE. GIVE BLOWOUT PREVENTER PROGRAM, IF ANY.

I hereby certify that the information above is true and complete to the best of my knowledge and belief.

[Signature] Title: Regulatory Manager Date: 1/21/82
 (This space for State Use)

APPROVED BY: *[Signature]* TITLE: OIL AND GAS INSPECTOR
 CONDITIONS OF APPROVAL, IF ANY: Cement must be circulated to surface behind 13 3/8" + 8 5/8" casing
 Notify N.M.O.C.C. in sufficient time to witness cementing the 8 5/8" casing
 JAN 26 1982

W MEXICO OIL CONSERVATION COMMISSION
WELL LOCATION AND ACREAGE DEDICATION PLAT

Form C-102
Supersedes C-128
Effective 1-1-65

All distances must be from the outer boundaries of the Section.

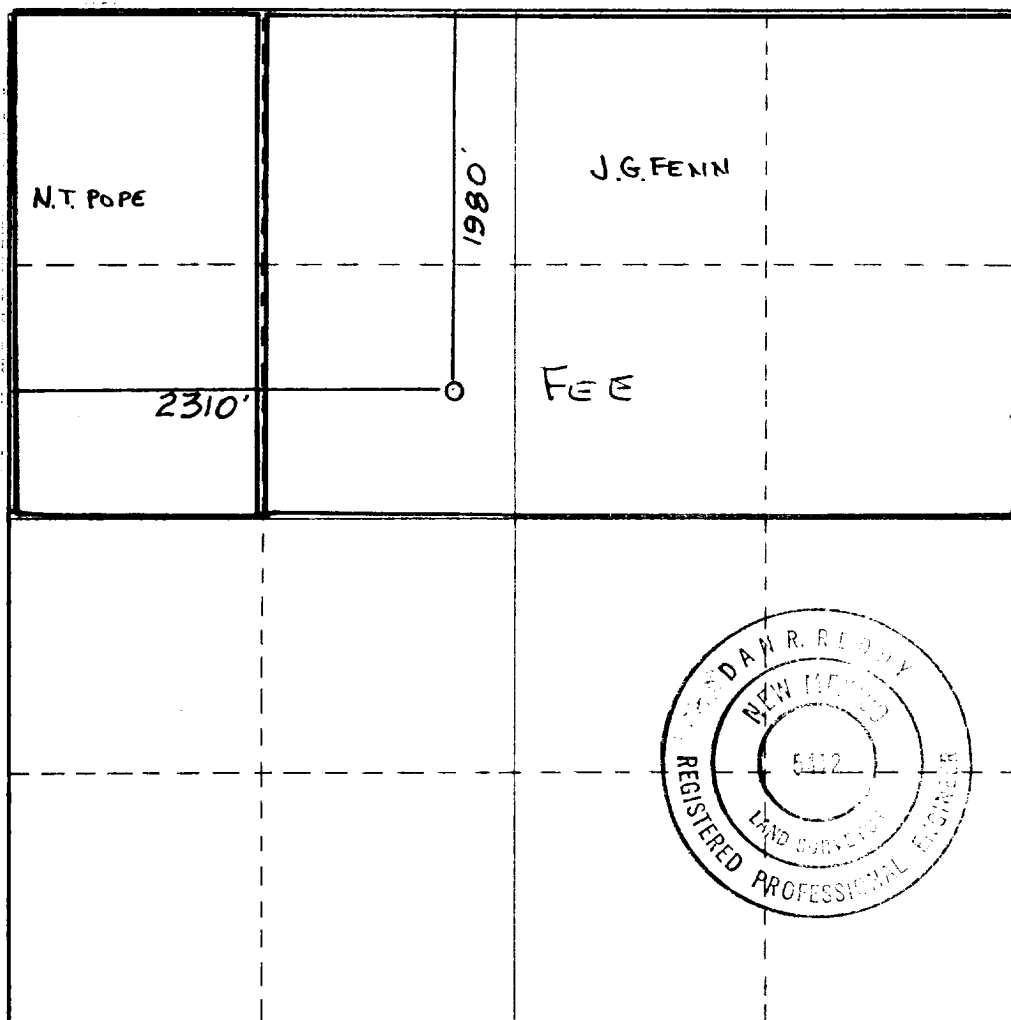
Operator Yates Petroleum Corporation			Lease Copeland SM Com		Well No. 1
Unit Letter F	Section 25	Township 18 South	Range 26 East	County Eddy	
Actual Footage Location of Well: 1980 feet from the North line and 2310 feet from the West line					
Ground Level Elev. 3282	Producing Formation MORROW		Pool UNDES. MORROW	Dedicated Acreage: 320 Acres	

1. Outline the acreage dedicated to the subject well by colored pencil or hachure marks on the plat below.
2. If more than one lease is dedicated to the well, outline each and identify the ownership thereof (both as to working interest and royalty).
3. If more than one lease of different ownership is dedicated to the well, have the interests of all owners been consolidated by communitization, unitization, force-pooling, etc?

☐ Yes ☐ No If answer is "yes," type of consolidation _____

If answer is "no," list the owners and tract descriptions which have actually been consolidated. (Use reverse side of this form if necessary.) _____

No allowable will be assigned to the well until all interests have been consolidated (by communitization, unitization, forced-pooling, or otherwise) or until a non-standard unit, eliminating such interests, has been approved by the Commission.



CERTIFICATION

I hereby certify that the information contained herein is true and complete to the best of my knowledge and belief.

Gliserio Rodriguez
Name
GLISERIO RODRIGUEZ
Position
Reg Mgr
Company
YATES PETROLEUM CORP
Date
12-21-81

I hereby certify that the well location shown on this plat was plotted from field notes of actual surveys made by me or under my supervision, and that the same is true and correct to the best of my knowledge and belief.

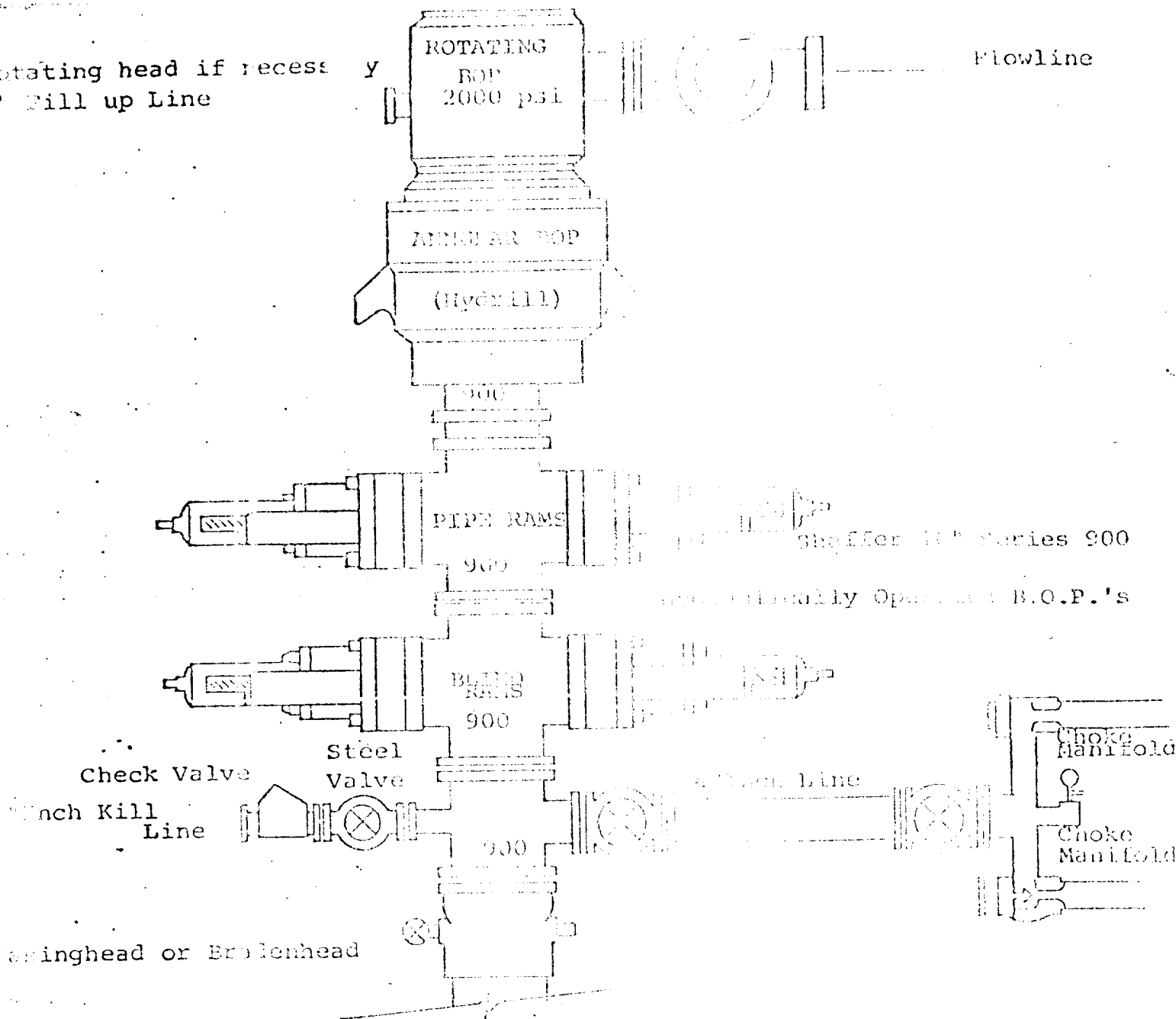
Date Surveyed
12/20/81
Registered Professional Engineer and/or Land Surveyor

Dan R. Reddy
Certificate No.
NMPE&LS #5412

0 330 660 990 1320 1650 1980 2310 2640 2000 1500 1000 500 0

Rotating head if necessary
Fill up Line

Flowline



THE FOLLOWING CONSTITUTE MINIMUM BLOWOUT PREVENTER REQUIREMENTS

1. All preventers to be hydraulically operated with secondary manual controls installed prior to drilling out from casing.
2. Choke outlet to be a minimum of 4" diameter.
3. Kill line to be of all steel construction with 2" minimum diameter.
4. All connections from operating manifold to preventers to be all steel hole or tube a minimum of one inch in diameter.
5. The available closing pressure shall be at least 15% in excess of that required with sufficient volume to operate the B.O.P.'s.
6. All connections to and from preventer to have a pressure rating equivalent to that of the B.O.P.'s.
7. Inside blowout preventer to be available on the floor.
8. Operating controls located a safe distance from the rig floor.
9. Hole must be kept filled on trips before immediate casing. Operator not responsible for blowouts resulting from not keeping hole full.
10. D. P. float must be installed and used at the time of first gas intrusion.