

UNITED STATES
DEPARTMENT OF THE INTERIOR
GEOLOGICAL SURVEY
MINERAL CONS. COMMISSION
Drawer DD
Artesia, NM 8821030-015-24135
5. LEASE DESIGNATION AND SERIAL NO.

C/SF

APPLICATION FOR PERMIT TO DRILL, DEEPEN, OR PLUG BACK

1a. TYPE OF WORK

DRILL ☒DEEPEN ☐PLUG BACK ☐

b. TYPE OF WELL

OIL
WELL ☒GAS
WELL ☐

OTHER

SINGLE
ZONE ☐MULTIPLE
ZONE ☐

2. NAME OF OPERATOR

Ray Westall

RECEIVED

3. ADDRESS OF OPERATOR

Box 4 Loco Hills, NM 88255

4. LOCATION OF WELL (Report location clearly and in accordance with any State requirements)
At surface

1880' FSL & 2080' FWL

At proposed prod. zone

O. C. D.
ARTESIA, OFFICE

LC 067132

6. IF INDIAN, ALLOTTEE OR TRIBE NAME

7. UNIT AGREEMENT NAME

8. FARM OR LEASE NAME

Denton Federal

9. WELL NO.

6

10. FIELD AND POOL, OR WILDCAT

San Andres Wildcat

11. SEC., T., R., M., OR BLK.
AND SURVEY OR AREA

S-22 T-18S R-29E

12. COUNTY OR PARISH 13. STATE

Eddy

NM

14. DISTANCE IN MILES AND DIRECTION FROM NEAREST TOWN OR POST OFFICE*

7 1/2 miles SW of Loco Hills, NM

15. DISTANCE FROM PROPOSED*

LOCATION TO NEAREST
PROPERTY OR LEASE LINE, FT.
(Also to nearest drlg. unit line, if any)

1880'

16. NO. OF ACRES IN LEASE

720

17. NO. OF ACRES ASSIGNED
TO THIS WELL

40

18. DISTANCE FROM PROPOSED LOCATION*
TO NEAREST WELL, DRILLING, COMPLETED,
OR APPLIED FOR, ON THIS LEASE, FT.

100'

19. PROPOSED DEPTH

3100'

20. ROTARY OR CABLE TOOLS

Rotary

21. ELEVATIONS (Show whether DF, RT, GR, etc.)

3448

22. APPROX. DATE WORK WILL START*

ASAP

23. PROPOSED CASING AND CEMENTING PROGRAM

SIZE OF HOLE	SIZE OF CASING	WEIGHT PER FOOT	SETTING DEPTH	QUANTITY OF CEMENT
12 1/2"	8 5/8"	24#	Approx. 350'	250 sx circulated
8"	4 1/2"	10 1/2#	3100'	600 sx circulated

Posted ID-2
API + NL Book
4-16-82

We propose to drill and test the San Andres and intermediate formations. Approximately 350' of surface casing will be set to shut off gravel and cavings. 4 1/2" production casing will be run, cemented, perforated and possibly sand frac'd for production.

Well will be on existing location of Southland Royalty's deep well.

RECEIVED
MAR 29 1982OIL & GAS
U.S. GEOLOGICAL SURVEY
NEW MEXICO

IN ABOVE SPACE DESCRIBE PROPOSED PROGRAM: If proposal is to deepen or plug back, give data on present productive zone and proposed new productive zone. If proposal is to drill or deepen directionally, give pertinent data on subsurface locations and measured and true vertical depths. Give blowout preventer program, if any.

24.

SIGNED

Ray Westall

TITLE

Operator

DATE

3-26-82

(This space for Federal or State approval)

PERMIT NO.

(Orig. Sec.) GEORGE H. STEWART

APPROVAL DATE

APPROVED BY

APR 13 1982

TITLE

DATE

CONDITIONS OF APPLICABLE, IF ANY:

JAMES A. GILLHAM
DISTRICT SUPERVISOR

NEW MEXICO OIL CONSERVATION COMMISSION
WELL LOCATION AND ACREAGE DEDICATION PLAT

Form C-102
Supersedes C-128
Effective 1-1-65

All distances must be from the outer boundaries of the Section.

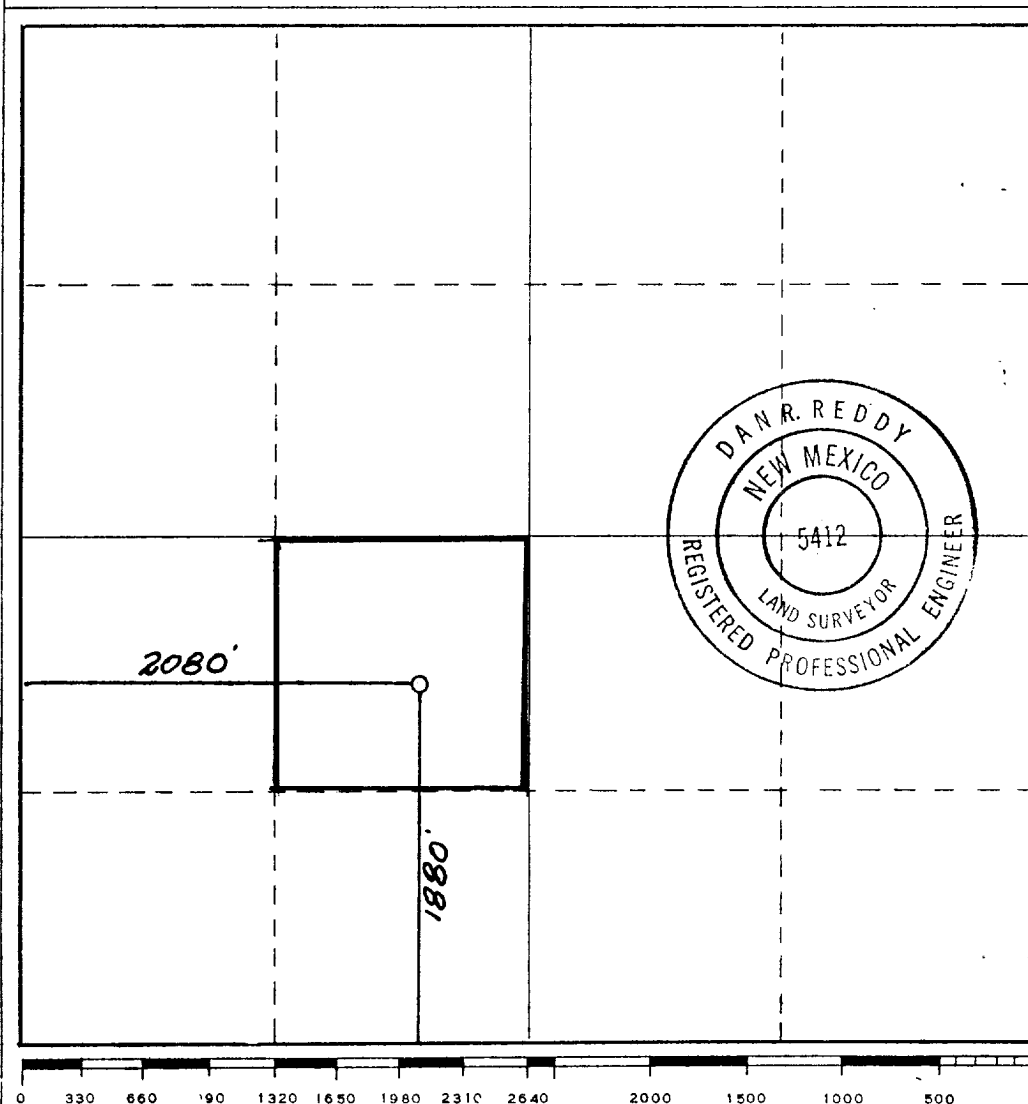
Operator RAY WESTALL			Lease Denton Federal			Well No. 6		
Unit Letter K	Section 22	Township 18 South	Range 29 East	County Eddy				
Actual Footage Location of Well: 1880 feet from the South line and 2080 feet from the West line								
Ground Level Elev. 3448		Producing Formation SAN ANDRES		Pool ind			Dedicated Acreage: 40 Acres	

1. Outline the acreage dedicated to the subject well by colored pencil or hachure marks on the plat below.
2. If more than one lease is dedicated to the well, outline each and identify the ownership thereof (both as to working interest and royalty).
3. If more than one lease of different ownership is dedicated to the well, have the interests of all owners been consolidated by communitization, unitization, force-pooling, etc?

☐ Yes ☐ No If answer is "yes," type of consolidation _____

If answer is "no," list the owners and tract descriptions which have actually been consolidated. (Use reverse side of this form if necessary.) _____

No allowable will be assigned to the well until all interests have been consolidated (by communitization, unitization, forced-pooling, or otherwise) or until a non-standard unit, eliminating such interests, has been approved by the Commission.



CERTIFICATION

I hereby certify that the information contained herein is true and complete to the best of my knowledge and belief.

Name Ray Westall
Position Operator
Company Ray Westall
Date 3-26-82

I hereby certify that the well location shown on this plat was plotted from field notes of actual surveys made by me or under my supervision, and that the same is true and correct to the best of my knowledge and belief.

Date Surveyed March 14, 1982
Registered Professional Engineer and/or Land Surveyor
Dan R. Reddy
Certificate No. NM PE&LS #5412

APPLICATION FOR DRILLING

Ray Westall Denton #6
1880 FSL 2080 FWL
S-22 T-18S R-29E
Eddy County, New Mexico

In conjunction with Form 9-331C, application for permit to drill subject well, Ray Westall submits the following ten items of pertinent information in accordance with USGS requirements:

1. The geological surface formation is quaternary.
2. The estimated tops of geologic markers are as follows:

Yates	1400
7 Rivers	1750
Queen	2050
Grayburg	2500
San Andres	3000
3. The estimated depths at which anticipated water, oil and gas formations are expected to be encountered:

Water:	Approximately	180'
Oil & Gas:	Yates	1400'
	7 Rivers	1700'
	Queen	2050'
	Grayburg	2500'
	San Andres	3000'
4. Proposed Casing Program: See Form 9-331C.
5. Pressure Control Equipment: See Form 9-331C and Exhibit E.
6. Mud Program: Mud up 150' before TD and circulate 2 hours after TD and pull out laying down and run casing.
7. Auxiliary Equipment: N/A
8. Testing, Logging and Coring Program: Logging casing compensated Neutron with Gamma Ray Collar Log. Cement Bond with nuclear log.
9. No abnormal pressures or temperatures are anticipated.
10. Anticipated starting date: As soon as possible.

Exhibit E

Hydrolic
CAMERON SS 10" X 900 X 3000 #

