

RECEIVED

30-015-24160

GEOLOGICAL SURVEY

APPLICATION FOR PERMIT TO DRILL, DEEPEN, OR PLUG BACK

MAY 17 1982

O. C. PLUG BACK
ARTESIA, OFFICE

1a. TYPE OF WORK

DRILL ☒DEEPEN ☐O. C. PLUG BACK ☐

b. TYPE OF WELL

OIL
WELL ☒GAS
WELL ☐OTHER ☐SINGLE
ZONE ☐MULTIPLE
ZONE ☐

2. NAME OF OPERATOR

Anadarko Production Company ✓

3. ADDRESS OF OPERATOR

P. O. Box 67, Loco Hills, New Mexico 88255

4. LOCATION OF WELL (Report location clearly and in accordance with any State requirements.)*

At surface

1880' FSL & 1980' FWL Sec. 17, T18S, R29E

At proposed prod. zone

Eddy County, New Mexico

Same

14. DISTANCE IN MILES AND DIRECTION FROM NEAREST TOWN OR POST OFFICE*

Approximately 8 miles Southwest of Loco Hills Townsite

10. DISTANCE FROM PROPOSED*

LOCATION TO NEAREST

PROPERTY OR LEASE LINE, FT.

(Also to nearest drlg. unit line, if any)

760'

16. NO. OF ACRES IN LEASE

720

17. NO. OF ACRES ASSIGNED
TO THIS WELL

40

18. DISTANCE FROM PROPOSED LOCATION*

TO NEAREST WELL, DRILLING, COMPLETED,
OR APPLIED FOR, ON THIS LEASE, FT.

1320'

19. PROPOSED DEPTH

2825'

20. ROTARY OR CABLE TOOLS

Rotary

21. ELEVATIONS (Show whether DF, RT, GR, etc.)

3547.2 GL

22. APPROX. DATE WORK WILL START*

6-1 -82

23.

PROPOSED CASING AND CEMENTING PROGRAM

SIZE OF HOLE	SIZE OF CASING	WEIGHT PER FOOT	SETTING DEPTH	QUANTITY OF CEMENT
12-1/4"	8-5/8"	24.0#	350'	Approx 200 sx circ or Readymix
7-7/8"	5-1/2"	15.5#	2825'	Approx 500 sx Circulated

1. Rig up Rotary Tools.
2. Drill 12-1/4" hole to approximately 350'; set & circulate or readymix cement to surface on 8-5/8" casing. Install & test 10" Series 600 Double Ram Blowout Preventor.
3. Drill 7-7/8" hole to TD (approx. 2825'); run Open Hole Logs.
4. Set & circulate cement on 5-1/2" casing from TD to surface.
5. Perforate, acidize and fracture treat.
6. Run 2-3/8" tubing, rods & bottomhole pump, install pumping equipment and place well on production.

RECEIVED
APR 20 1982

IN ABOVE SPACE DESCRIBE PROPOSED PROGRAM: If proposal is to deepen or plug back, give data on present productive zone and proposed new productive zone. If proposal is to drill or deepen directionally, give pertinent data on subsurface locations and measured and true vertical depths. Give blowout preventer program, if any.

24.

SIGNED

TITLE

Field Foreman

DATE April 20, 1982

(This space for Federal or State office use)

(Orig. Sgd.) GEORGE H. STEWART

PERMIT NO.

APPROVAL DATE

APPROVED BY

TITLE

DATE

CONDITIONS OF APPLICATION, IF ANY:

MAY 14 1982
FOR
JAMES A. GILLHAM
DISTRICT SUPERVISOR

*See Instructions On Reverse Side

Posted FD-1
5-21-82
New loc & H.I.

NEW MEXICO OIL CONSERVATION COMMISSION
WELL LOCATION AND ACREAGE DEDICATION PLAT

Form No. 1
Superseded Edition
Effective 1-1-78

RECEIVED

ANADARKO PRODUCTION COMPANY

Travis D.

MAY 17 1982

17

18 South

22 East

O. C. Dwy

1850

1850

South

1250

ARTESIA, OFFICE

West

3547.21

Grayburg

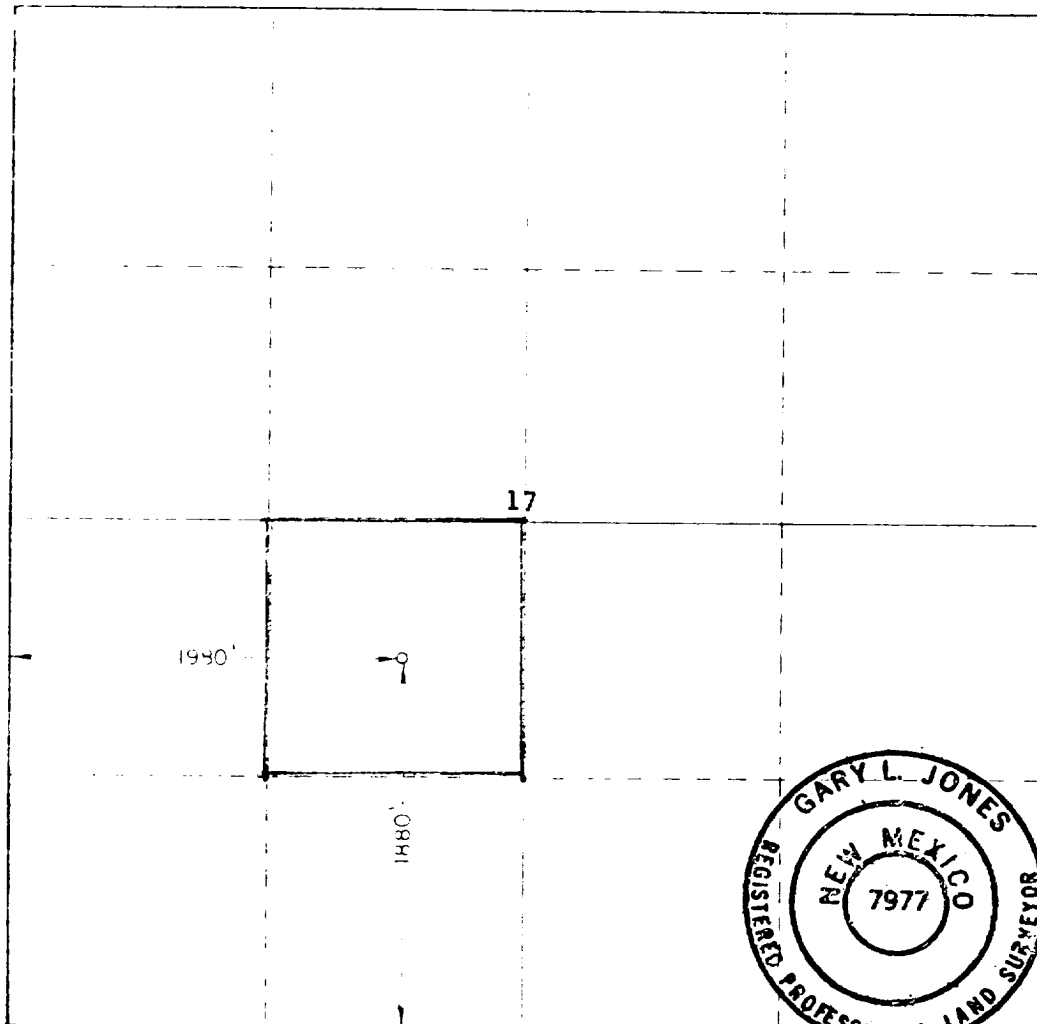
Loco Hills-Queen-Grayburg-SA

40

1. Outline the acreage dedicated to the subject well by colored pencil or hatchure marks on the plat below.
2. If more than one lease is dedicated to the well, outline each and identify the ownership thereof (both as to working interest and royalty).
3. If more than one lease of different ownership is dedicated to the well, have the interests of all owners been consolidated by communitization, unitization, force-pooling, etc?
- Yes ☐ No ☐ If answer is "yes," type of consolidation _____

If answer is "no," list the owners and tract descriptions which have actually been consolidated. (Use reverse side of this form if necessary.) _____

No allowable will be assigned to the well until all interests have been consolidated (by communitization, unitization, forced-pooling, or otherwise) or until a non-standard unit, eliminating such interests, has been approved by the Commission.



CERTIFICATION

I hereby certify that the information contained herein is true and complete to the best of my knowledge and belief.

Name

Truman D. Jones

Position

Field Foreman

Company

Anadarko Production Co.

Date

April 23, 1982

I hereby certify that the well location shown on this plat was plotted from field notes of actual surveys made by me or under my supervision, and that the same is true and correct to the best of my knowledge and belief.

Date Surveyed

April 17, 1982

Registered Professional Engineer
and/or Land Surveyor

Certificate No.

7977

DATA SHEET

This data sheet is provided in reference to the attached "Application for Permit to Drill": Anadarko's Travis "D" Well #19.

RECEIVED
MAY 1 / 1982
O. C. D.
ARTESIA OFFICE

1. Location: 1880' FSL & 1980' FWL Sec. 17, T18S, R29E, Eddy County, New Mexico
2. Elevation: 3547.2' GL
3. Geological Name of Surface Formation: Triassic Doakum (Santa Rosa)
4. Type of Drilling Tools to be utilized: Rotary Tools.
5. Proposed Drilling Depth: 2825'
6. Tops of Important Geological Markers:

T. Salt - -	350'	7-Rivers - -	1460'
B. Salt - -	780'	Queen - - -	2000'
Tansill - -	820'	Grayburg - -	2350'
Yates - - -	935'	San Andres -	2750'

7. Estimated Depth of Anticipated Water, Oil or Gas:
8. Casing Program: Oil: - - 2440' - 2750'
8-5/8" - 24.0# K-55 or J-55 - New
5-1/2" - 15.5# K-55 or J-55 - New
9. Setting Depth of Casing:
8-5/8" - 350' - approx. 200 sx cement
5-1/2" - 2825' - approx. 500 sx cement
10. Specifications for Pressure Control Equipment: See attached Schematic
This rig will have a Series 600 BOP with 4" Blind Rams, kill line and choke manifold -
Koomey Hydraulic controls & accumulator with remote controls. When nipping up, test
BOP & Choke to 1000 Psi. Operate BOP equipment once a day, or as directed by Company
Representative.
11. Mud Program:
Spud and drill with fresh water Native Mud to a depth of approx. 350'. Drill out
from under surface casing with 10# brine water to within 50' of T D while maintaining
a Ph of 10. At this point paper & gel will be used to clean hole prior to running O H Logs.
2. Testing, Logging & Coring Program:
 - a. Testing: No drill stem tests will be conducted.
 - b. Coring: No coring is planned but there is a possibility the well will be cored.
 - c. Logging: Open Hole Logs will be run prior to running 5 1/2" casing.
3. Potential Hazards:
None are expected. Above described BOP should take care of any blowout. Numerous
wells have been drilled in this area without problems.
4. Anticipated Starting Date & Duration:
Plans are to begin drilling operations about June 1, 1982. Approximately 6 days are
required to drill the well and 2 weeks for completion.
5. Other Facets:
None

Series 600

2000# WP BOP
 10" Shaffer Type B Hydraulic BOP - 2000 Psi
 10" GK Hydrill - 2000 WP - 2000 Psi
 80 Gallon - 5 Station Koomey Accumulator
 2000# WP Choke Manifold

