

NEW MEXICO OIL CONSERVATION COMMISSION
WELL LOCATION AND ACREAGE DEDICATION PLAT

Form 1-1
Superseded 1-1-1
1-1-1-1-1-1

All distances must be from the center boundaries of the Section.

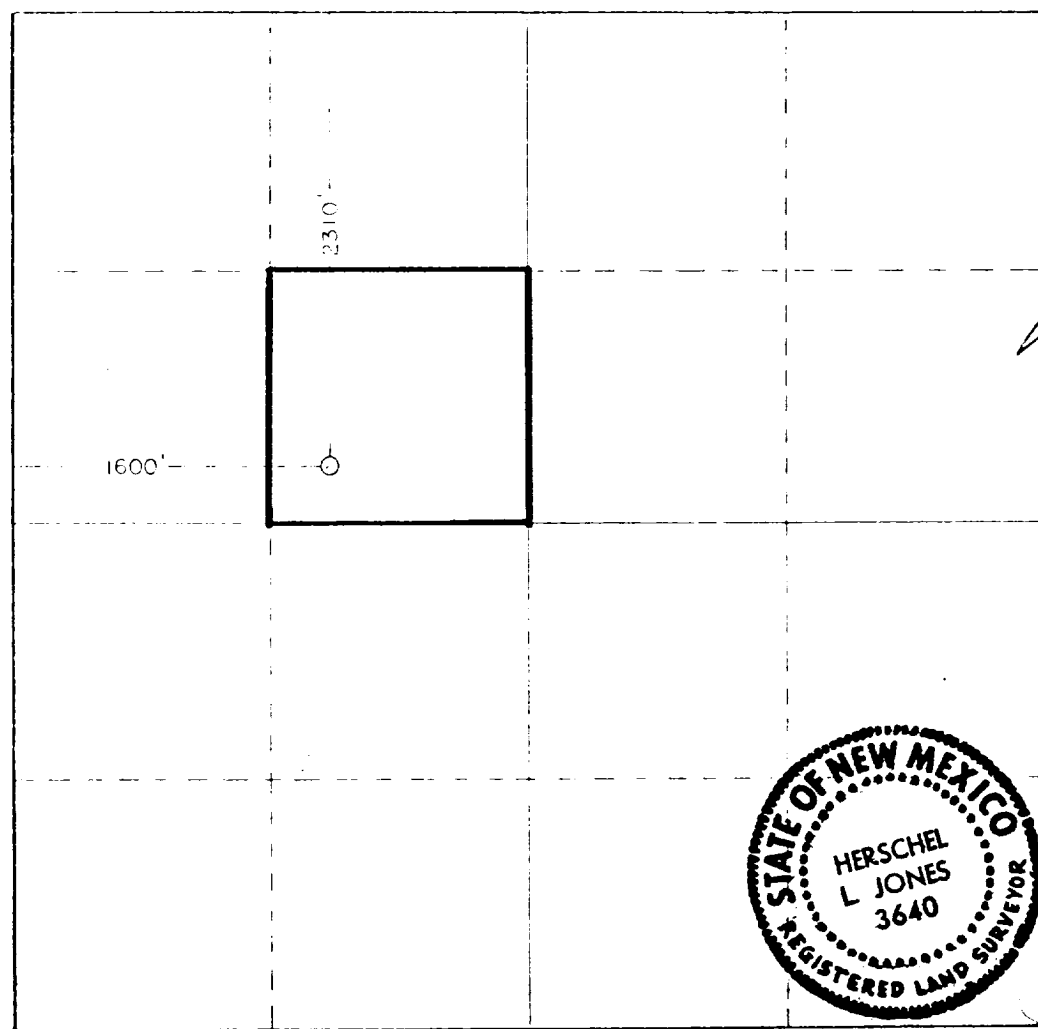
ANADARKO PRODUCTION COMPANY		Ballard Grayburg SA Unit Tr. 1		Well No.	7
1	7	18 South	29 East	Eddy	
2310	North	1600	West		
3629.4'	Grayburg	Grayburg-San Andres	40		

- Outline the acreage dedicated to the subject well by colored pencil or hatchure marks on the plat below.
- If more than one lease is dedicated to the well, outline each and identify the ownership thereof (both as to working interest and royalty).
- If more than one lease of different ownership is dedicated to the well, have the interests of all owners been consolidated by communitization, unitization, force-pooling, etc?

☒ Yes ☐ No If answer is "yes," type of consolidation Unitization

If answer is "no," list the owners and tract descriptions which have actually been consolidated. (Use reverse side of this form if necessary.)

No allowable will be assigned to the well until all interests have been consolidated (by communitization, unitization, force-pooling, or otherwise) or until a non-standard unit, eliminating such interests, has been approved by the Commission.



CERTIFICATION

I hereby certify that the information contained herein is true and complete to the best of my knowledge and belief.

Terry L. Buckles
Name
Terry L. Buckles
Position
Area Supervisor
Company
Anadarko Production Company
Date

I hereby certify that the well location shown on this plat was plotted from field notes of actual surveys made by me or under my supervision, and that the same is true and correct to the best of my knowledge and belief.

Date Surveyed
5/6/82
Registered Professional Engineer and/or Land Surveyor
Herschel L. Jones
Certificate No.
3640