

NO. OF COPIES RECEIVED	
DISTRIBUTION	
SANTA FE	1
FILE	1
U.S.G.S.	2
LAND OFFICE	
OPERATOR	1

NEW MEXICO OIL CONSERVATION COMMISSION

RECEIVED

SEP 1 1982

O. C. D.

Form C-101
Revised 1-4-65

5A. Indicate Type of Lease

STATE ☐

FEE ☒

5. State Oil & Gas Lease No.

APPLICATION FOR PERMIT TO DRILL, DEEPEN, OR PLUG BACK

1a. Type of Work

DRILL ☒

DEEPEN ☐

PLUG BACK ☐

b. Type of Well

OIL WELL ☒

GAS WELL ☐

OTHER ☐

SINGLE ZONE ☐

MULTIPLE ZONE ☐

2. Name of Operator

Ralph Nix

3. Address of Operator

P. O. Box 617 Artesia, New Mexico 88210

4. Location of Well

UNIT LETTER B

LOCATED 990

FEET FROM THE North LINE

AND 1650

FEET FROM THE East

LINE OF SEC. 34

TWP. 18S

RGE. 26E

NADPM

12. County

Eddy

19. Proposed Depth

Approx 3600'

19A. Formation

Yeso

20. Rotary or C.T.

Rotary

21. Elevations (Show whether DT, RT, etc.)

3354' GL

21A. Kind & Status Plug. Bond

Blanket

21B. Drilling Contractor

Salazar Bros. Drilling

22. Approx. Date Work will start

ASAP

23.

PROPOSED CASING AND CEMENT PROGRAM

SIZE OF HOLE	SIZE OF CASING	WEIGHT PER FOOT	SETTING DEPTH	SACKS OF CEMENT	EST. TOP
9 1/2"	8 5/8"	24#	910'	525	Circ to surface
6 1/4"	5 1/2"	15.5#	TD	375	Circ to surface

Purpose: To drill and test the Yeso and possible intermediate formations. Surface casing will be set at least 100' below the Artesia Water Zone. 5 1/2" production casing will be set at TD. All casing will be circulated to the surface. Will perforate and stimulate as needed for production

Mud Program: 0-910' native and spud mud, fresh water gel to TD.

BOP Program: BOP will be installed and tested on 7" casing.

APPROVAL VALID FOR 180 DAYS
PERMIT EXPIRES 3-2-83
UNLESS DRILLING UNDERWAY

IN ABOVE SPACE DESCRIBE PROPOSED PROGRAM: IF PROPOSAL IS TO DEEPEN OR PLUG BACK, GIVE DATA ON PRESENT PRODUCTIVE ZONE AND PROPOSED NEW PRODUCTIVE ZONE. GIVE BLOWOUT PREVENTER PROGRAM, IF ANY.

I hereby certify that the information above is true and complete to the best of my knowledge and belief.

Signed Ralph Nix Title _____

Date 9/31/82

(This space for State Use)

APPROVED BY Mike Wilkerson

TITLE

OIL AND GAS INSPECTOR

DATE

SEP 2 1982

CONDITIONS OF APPROVAL, IF ANY:

Notify N.M.O.C.C. in sufficient time to witness cementing

**NEW MEXICO OIL CONSERVATION COMMISSION
WELL LOCATION AND ACREAGE DEDICATION PLAT**

SEP 1 1982
Form O-102
Supersedes C-128
Effective 1-1-65
O. C. D.

All distances must be from the outer boundaries of the Section.

ARTESIA, OFFICE

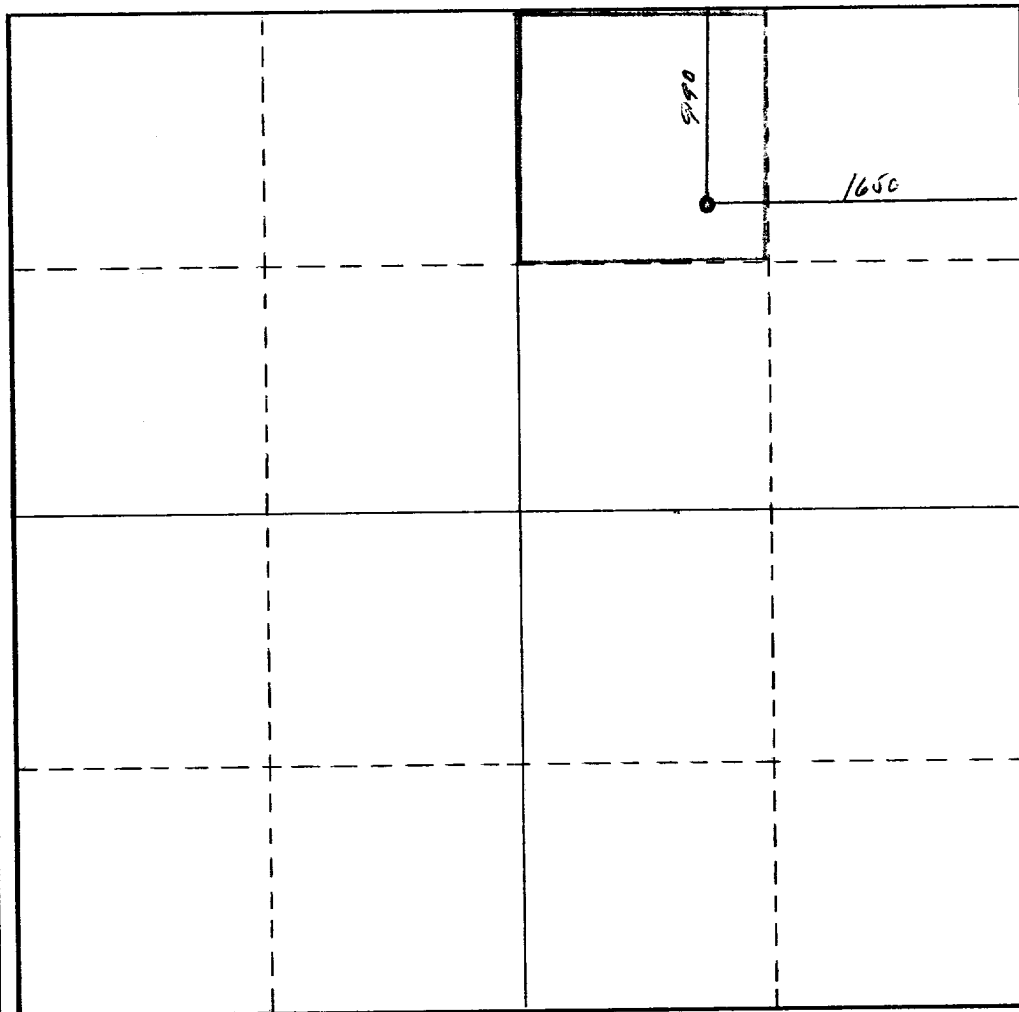
Operator Ralph Nix		Lease Merrill		Well No. 2
Unit Letter B	Section 34	Township 18 South	Range 26 East	County Eddy
Actual Footage Location of Well: 990 feet from the North line and 1650 feet from the East line				
Ground Level Elev. 3354	Producing Formation Yeso	Pool Und. Atoka Yeso	Dedicated Acreage: 40.0 Acres	

1. Outline the acreage dedicated to the subject well by colored pencil or hachure marks on the plat below.
2. If more than one lease is dedicated to the well, outline each and identify the ownership thereof (both as to working interest and royalty).
3. If more than one lease of different ownership is dedicated to the well, have the interests of all owners been consolidated by communitization, unitization, force-pooling, etc?

☐ Yes ☐ No If answer is "yes," type of consolidation _____

If answer is "no," list the owners and tract descriptions which have actually been consolidated. (Use reverse side of this form if necessary.) _____

No allowable will be assigned to the well until all interests have been consolidated (by communitization, unitization, forced-pooling, or otherwise) or until a non-standard unit, eliminating such interests, has been approved by the Commission.



CERTIFICATION

I hereby certify that the information contained herein is true and complete to the best of my knowledge and belief.

Name _____
 Position *Ralph Nix*
 Company **Ralph Nix**
 Date **8/31/82**

I hereby certify that the well location shown on this plat was plotted from field notes of actual surveys made by me or under my supervision, and that the same is true and correct to the best of my knowledge and belief.

Date Surveyed **April 13, 1982**
 Registered Professional Engineer and/or Land Surveyor
John a. Matw...
 Certificate No. **1502**