

STATE OF NEW MEXICO
ENERGY AND MINERALS DEPARTMENT

OIL CONSERVATION DIVISION
P. O. BOX 2088
SANTA FE, NEW MEXICO 87501

NO. OF COPIES RECEIVED	
DISTRIBUTION	
SANTA FE	<input checked="" type="checkbox"/>
FILE	<input checked="" type="checkbox"/>
U.S.G.S.	<input checked="" type="checkbox"/>
LAND OFFICE	<input checked="" type="checkbox"/>
OPERATOR	<input checked="" type="checkbox"/>

WELL COMPLETION OR RECOMPLETION REPORT AND LOG

5a. Indicate Type of Lease
State ☒ Fee ☐
5. State Oil & Gas Lease No.
NM-1181

7. Unit Agreement Name

8. Farm or Lease Name

ARTESIA STATE

9. Well No.

1

10. Field and Pool, or Wildcat

ARTESIA (G-SA)

12. County

EDDY

25. Was Directional Survey Made

NO

27. Was Well Cored

NO

28. Type Electric and Other Logs Run

BHC-SONIC-GR-DLL w/RXO

29. Date First Production

11-12-82

Production Method (Flowing, gas lift, pumping - Size and type pump)

Pumping 2 1/2 x 1 1/4 x 14'

Well Status (Prod. or Shut-in)

Producing

Date of Test

1-20-83

Hours Tested

24

Choke Size

--

Prod'n. For Test Period

5

Oil - Bbl.

11

Gas - MCF

34

Water - Bbl.

2200

Gas - Oil Ratio

34.9°

Flow Tubing Press.

--

Casing Pressure

20

Calculated 24-Hour Rate

Oil - Bbl.

Gas - MCF

Water - Bbl.

Oil Gravity - API (Corr.)

34.9°

34. Disposition of Gas (Sold, used for fuel, vented, etc.)

Vented

Test Witnessed By

35. List of Attachments

Log, Inclination Report

36. I hereby certify that the information shown on both sides of this form is true and complete to the best of my knowledge and belief.

SIGNED  G.E. TATE

TITLE AREA PROD. SUPERINTENDENT

DATE 1-26-83

INSTRUCTIONS

This form is to be filed with the appropriate District Office of the Division not later than 20 days after the completion of any newly-drilled or deepened well. It shall be accompanied by one copy of all electrical and radioactivity logs run on the well and a summary of all special tests conducted, including drill stem tests. All depths reported shall be measured depths. In the case of directionally drilled wells, true vertical depths shall also be reported. For multiple completions, items 30 through 34 shall be reported for each zone. The form is to be filed in quintuplicate except on state land, where six copies are required. See Rule 1105.

INDICATE FORMATION TOPS IN CONFORMANCE WITH GEOGRAPHICAL SECTION OF STATE

Southeastern New Mexico

Northwestern New Mexico

T. Tansil 0'-210'	T. Canyon	T. Ojo Alamo	T. Penn. "B"
T. Salt	T. Strawn	T. Kirtland-Fruitland	T. Penn. "C"
T. Salt	T. Atoka	T. Pictured Cliffs	T. Penn. "D"
T. Yates 210	T. Miss	T. Cliff House	T. Leadville
T. 7 Rivers 596	T. Devonian	T. Menefee	T. Madison
T. Queen 1167	T. Silurian	T. Point Lookout	T. Elbert
T. Grayburg 1614	T. Montoya	T. Mancos	T. McCracken
T. San Andres 1852	T. Simpson	T. Gallup	T. Ignacio Qtzte
T. Glorieta	T. McKee	Base Greenhorn	T. Granite
T. Paddock	T. Ellenburger	T. Dakota	T.
T. Blinbry	T. Gr. Wash	T. Morrison	T.
T. Tubb	T. Granite	T. Todilto	T.
T. Drinkard	T. Delaware Sand	T. Entrada	T.
T. Abo	T. Bone Springs	T. Wingate	T.
T. Wolfcamp	T.	T. Chinle	T.
T. Penn.	T.	T. Permian	T.
T. Cisco (Bough C)	T.	T. Penn. "A"	T.

OIL OR GAS SANDS OR ZONES

No. 1, from 1694 to 1887	No. 4, from to
No. 2, from to	No. 5, from to
No. 3, from to	No. 6, from to

IMPORTANT WATER SANDS

Include data on rate of water inflow and elevation to which water rose in hole.

No. 1, from to feet	
No. 2, from to feet	
No. 3, from to feet	
No. 4, from to feet	

FORMATION RECORD (Attach additional sheets if necessary)

From	To	Thickness in Feet	Formation	From	To	Thickness in Feet	Formation
0	210	210	Tansil				
210	596	386	Yates-Shly Dolomite				
596	1167	571	7Rivers-Shly Dolomite				
1167	1614	447	Queen-Shly Dolomite, Sd				
1614	1852	238	Grayburg-Shly Dolomite, Sd				
1852	2201	349	San Andres-Shly Dolomite				
	TD						

N MEXICO OIL CONSERVATION COMMISS. N
WELL LOCATION AND ACREAGE DEDICATION PLAT

Form C-102
Supersedes C-128
Effective 1-1-65

All distances must be from the outer boundaries of the Section.

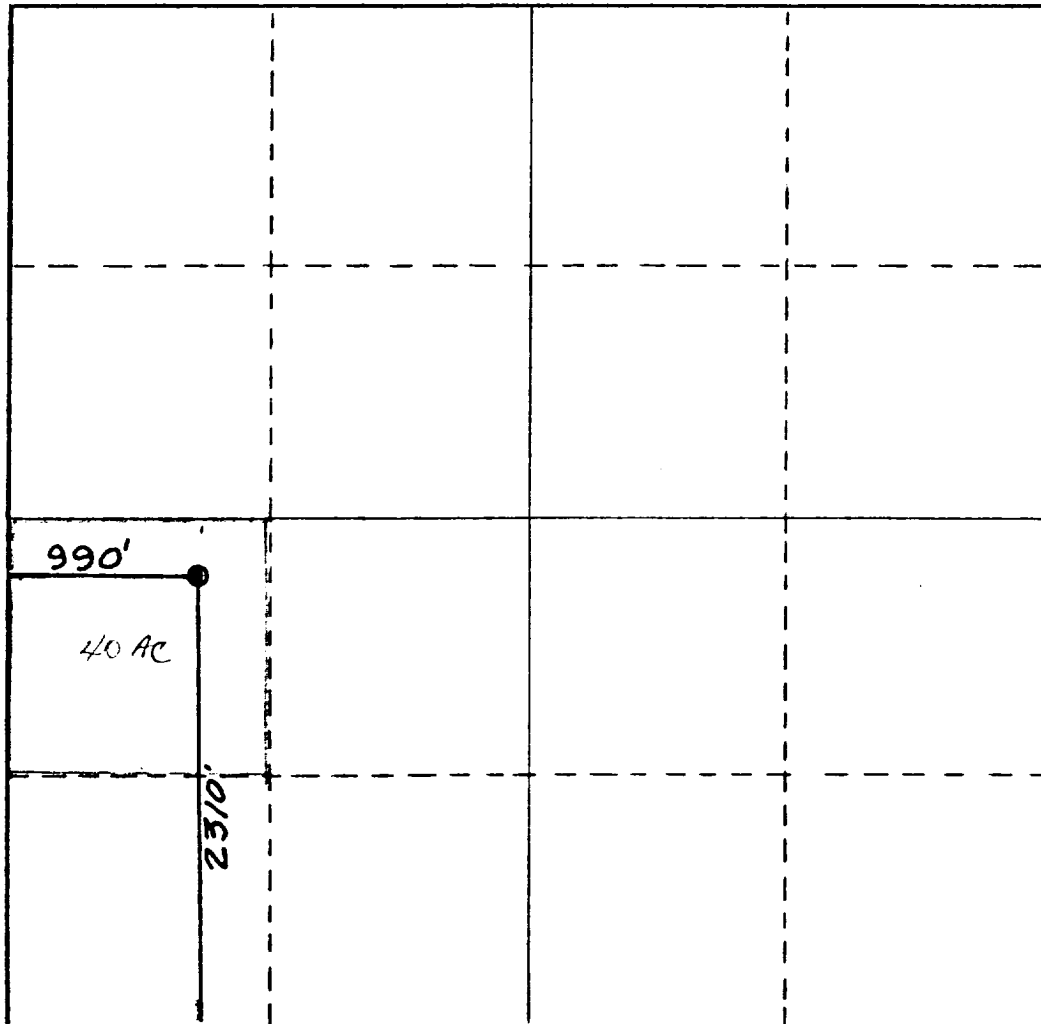
Operator THE SUPERIOR OIL COMPANY			Lease Artesia State		Well No. 1
Unit Letter L	Section 23	Township 18 South	Range 27 East	County Eddy	
Actual Footage Location of Well: 2310 feet from the South line and 990 feet from the West line					
Ground Level Elev. 3482.	Producing Formation Grayburg-San Andres		Pool Artesia (G-SA)	Dedicated Acreage: 40 Acres	

1. Outline the acreage dedicated to the subject well by colored pencil or hachure marks on the plat below.
2. If more than one lease is dedicated to the well, outline each and identify the ownership thereof (both as to working interest and royalty).
3. If more than one lease of different ownership is dedicated to the well, have the interests of all owners been consolidated by communitization, unitization, force-pooling, etc?

☐ Yes ☐ No If answer is "yes," type of consolidation _____

If answer is "no," list the owners and tract descriptions which have actually been consolidated. (Use reverse side of this form if necessary.) _____

No allowable will be assigned to the well until all interests have been consolidated (by communitization, unitization, forced-pooling, or otherwise) or until a non-standard unit, eliminating such interests, has been approved by the Commission.



CERTIFICATION

I hereby certify that the information contained herein is true and complete to the best of my knowledge and belief.

Name

G. E. Tate

Position

Production Superintendent

Company

The Superior Oil Company

Date

1/27/82

I hereby certify that the well location shown on this plat was plotted from field notes of actual surveys made by me or under my supervision, and that the same is true and correct to the best of my knowledge and belief.

Date Surveyed

August 19, 1982

Registered Professional Engineer
and/or Land Surveyor

Certificate No.

NM PE&LS #5412

