

UNITED STATES
DEPARTMENT OF THE INTERIOR
GEOLOGICAL SURVEY

NEW OIL CONDUIT COMM. No. 1
Artesia, NM

Budget Bureau No 42-R1425.

APPLICATION FOR PERMIT TO DRILL, DEEPEN, OR PLUG BACK

1a. TYPE OF WORK
DRILL ☒ DEEPEN ☐ PLUG BACK ☐

b. TYPE OF WELL
OIL WELL ☐ GAS WELL ☐ OTHER ☒ -Water Injection SINGLE ☐ MULTIPLE ☐

2. NAME OF OPERATOR
Anadarko Production Company

3. ADDRESS OF OPERATOR
P. O. Drawer 130, Artesia, New Mexico 88210

4. LOCATION OF WELL (Report location clearly and in accordance with any State requirements.)
At surface 2310' FNL & 1880' FWL Sec. 8, T18S, R29E, Eddy County, New Mexico
At proposed prod. zone Same

14. DISTANCE IN MILES AND DIRECTION FROM NEAREST TOWN OR POST OFFICE
Approximately 7 miles Southwest of Loco Hills, New Mexico

15. DISTANCE FROM PROPOSED LOCATION TO NEAREST PROPERTY OR LEASE LINE, FT. (Also to nearest drilg unit line, if any)
3200'

16. NO. OF ACRES IN LEASE
2600

17. NO. OF ACRES ASSIGNED TO THIS WELL
40

18. DISTANCE FROM PROPOSED LOCATION TO NEAREST WELL, DRILLING, COMPLETED, OR APPLIED FOR, ON THIS LEASE, FT.
350'

19. PROPOSED DEPTH
2735'

20. ROTARY OR CABLE TOOL
Rotary

21. ELEVATIONS (Show whether DF, RT, GR, etc.)
3527.8' GL

22. APPROX. DATE WORK WILL START
October 1, 1982

5. LEASE DESIGNATION AND SERIAL NO.
LC - 061702

6. IF INDIAN, ALLOTTEE OR TRIBE NAME

7. UNIT AGREEMENT NAME
Ballard Grayburg SA Unit

8. FARM OR LEASE NAME
Tract No. 15

9. WELL NO.
8

10. FIELD AND POOL, OR WILDCAT
Loco Hills-Queen-Grayburg-San Andres

11. SEC., T., R., M., OR B.L. AND SURVEY OR AREA
8 - 18S - 29E

12. COUNTY OR PARISH
Eddy

13. STATE
New Mexico

PROPOSED CASING AND CEMENTING PROGRAM

SIZE OF HOLE	SIZE OF CASING	WEIGHT PER FOOT	SETTING DEPTH	QUANTITY OF CEMENT
12-1/4"	8-5/8"	24.0#	350'	Approx. 250 sx circulated
7-7/8"	4-1/2"	10.5#	2735'	Approx. 500 sx circulated

1. Rig up rotary tools.
2. Drill 12 1/4" hole to approx. 350'; set & circulate or readymix cement to surface on 8-5/8" casing. Install & test Series 900 Double Ram Hydraulic BOP.
3. Drill 7-7/8" hole to approx. 2454'; plan to core well from approx 2400' to 2670'; @ 2350' plan to run GR Correlation Log. Plan to continue drilling with 7-7/8" bit to TD (approx. 2735'); plan to run Open Hole Logs.
4. Set & circulate cement on 4 1/2" casing from T D to surface.
5. Perforate and acidize Grayburg Zone.
6. Equip braidenhead and casing head with pipe & valves brought to the surface (valves open as an "attention getting device") of possible tubing, casing or packer leaks.
7. Run 2-3/8" SALTA (internally plastic lined) tubing with 4 1/2" injection packer.
8. Set packer approx. 50' above top perforations; pressure test casing to NMOCD specifications; unset packer, circulate packer fluid & reset packer.
9. Hook up well head for water injection.
10. Commence water injection in accordance with NMOCD Order #R7000, Case #7572 dated June 11, 1982.

IN ABOVE SPACE DESCRIBE PROPOSED PROGRAM: If proposal is to deepen or plug back, give data on present productive zone and proposed new productive zone. If proposal is to drill or deepen directionally, give pertinent data on subsurface locations and measured and true vertical depths. Give blowout preventer program, if any.

24. SIGNED Truman D. Stewart TITLE Field Foreman DATE August 23, 1982

(This space for Federal or State office use) (Eng. Sgd.) GEORGE H. STEWART

PERMIT NO. 10650 1982 APPROVAL DATE AUG 25 1982

APPROVED BY JAMES A. GILLHAM TITLE DISTRICT SUPERVISOR

CONDITIONS OF APPROVAL, IF ANY:

OIL & GAS
MINERALS MGMT. SERVICE
ROSWell, NEW MEXICO

*See Instructions On Reverse Side

N MEXICO OIL CONSERVATION COMMISSION
WELL LOCATION AND ACREAGE DEDICATION PLAT

Form O-102
 Supersedes O-101
 Effective 1-1-78

All distances must be from the outer boundaries of the Section

Operator ANADARKO PRODUCTION COMPANY			Lease Ballard Grayburg SA Unit Tr.15		Well No. 8
Range F	Section 8	Township 18 South	Range 29 East	County Eddy	

Actual Plotting Location of Well:

2310	feet from the	North	line and	1880	feet from the	West	line
3527.9'	from the	Grayburg	Pool	Loco Hills-Queen-Grayburg-San Andres		Dedicated Acreage 40	

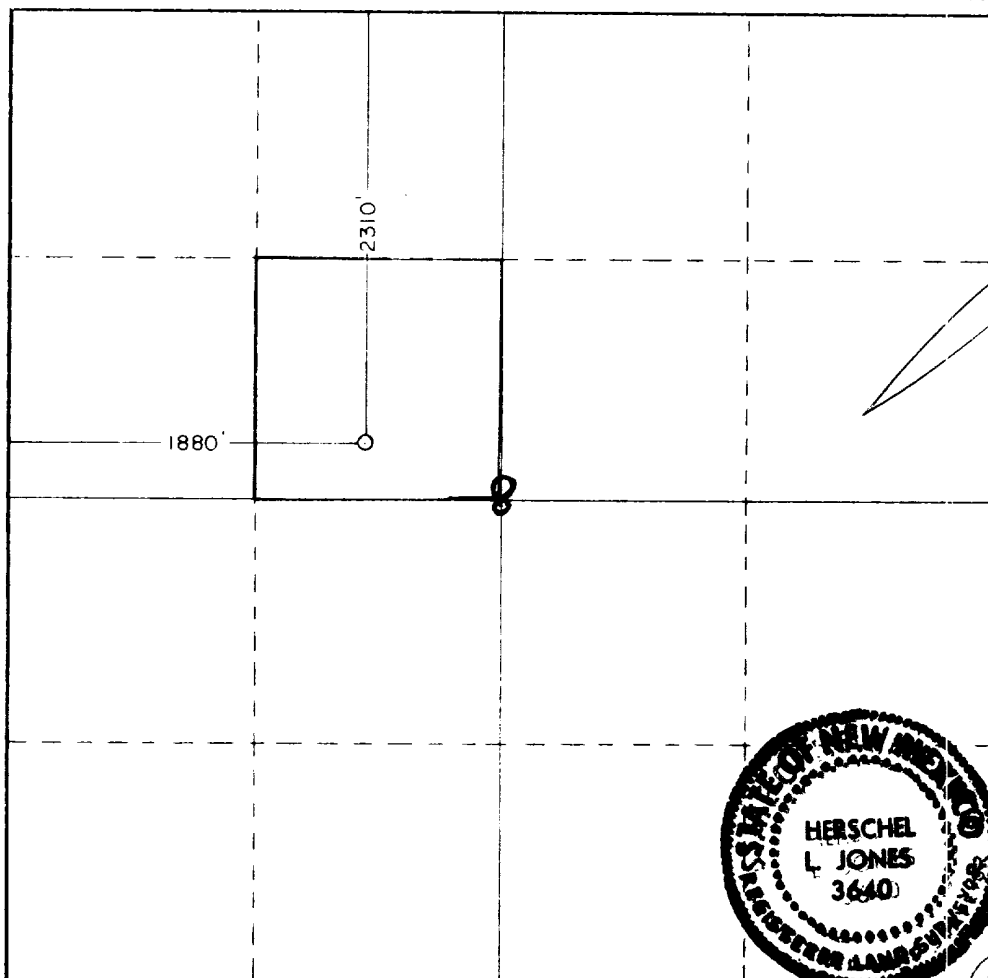
- Outline the acreage dedicated to the subject well by colored pencil or hatchure marks on the plat below.
- If more than one lease is dedicated to the well, outline each and identify the ownership thereof (both as to working interest and royalty).
- If more than one lease of different ownership is dedicated to the well, have the interests of all owners been consolidated by communitization, unitization, force-pooling, etc?

☒ Yes ☐ No If answer is "yes," type of consolidation Unitization

If answer is "no," list the owners and tract descriptions which have actually been consolidated (by communitization, unitization, force-pooling, or otherwise) or until a non-standard unit, eliminating such interests, has been approved by the Commission.

No allowable will be assigned to the well until all interests have been consolidated (by communitization, unitization, force-pooling, or otherwise) or until a non-standard unit, eliminating such interests, has been approved by the Commission.

RECEIVED
 AUG 25 1982
 OIL & GAS
 MINERALS & ENERGY SERVICE
 ROSWELL, NEW MEXICO



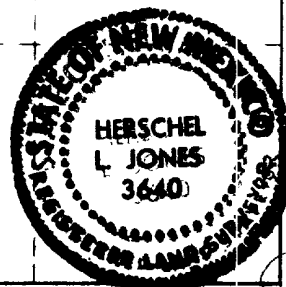
CERTIFICATION

I hereby certify that the information contained herein is true and complete to the best of my knowledge and belief.

[Signature]
 Name
Jerry L. Buckles
 Position
Area Supervisor
 Company
Anadarko Production Company
 Date
August 23, 1982

I hereby certify that the well location shown on this plat was plotted from field notes of actual surveys made by me or under my supervision, and that the same is true and correct to the best of my knowledge and belief.

Date Surveyed
5/25/82
 Registered Professional Engineer and/or Land Surveyor
[Signature]
 Certificate No.
3640



DATA SHEET

This data sheet is provided in reference to the attached "Application for Permit to Drill"; Anadarko's Ballard Grayburg San Andres Unit - Tract 15, well #8.

1. Location: 2310' FNL & 1880' FWL Sec. 8, T18S, R29E, Eddy County, New Mexico
2. Elevation: 3527.8'
3. Geological Name of Surface Formation: Triassic Doakum (Santa Rosa)
4. Type of Drilling Tools to be utilized: Rotary Tools
5. Proposed Drilling Depth: 2735'
6. Tops of Important Geological Markers:

T. Salt - - 350'	7-Rivers - - 1270'
B. Salt - - 880'	Queen - - - 1970'
Tansill - - 925'	Grayburg - - 2320'
Yates - - - 970'	San Andres - 2660'
7. Estimated Depth of Anticipated Water, Oil or Gas:

Oil: - - 2454'

8. Casing Program:

8-5/8" - 24.0# K-55 or J-55 - New
4-1/2" - 10-5# K-55 or J-55 - New
9. Setting Depth of Casing:

8-5/8" - 350' - approx. 250 sx cement
4-1/2" - 2735' - approx. 500 sx cement
10. Specifications for Pressure Control Equipment: See attached Schematic
This rig will have a Series 900 BOP with 4" Blind Rams, kill line and choke manifold, Koomey Hydraulic controls & accumulator with remote controls. When nipping up, test BOP & Choke to 1000 psi. Operate BOP equipment once a day, or as directed by Company Representative.
11. Mud Program:

Spud and drill with fresh water Native Mud to a depth of approx. 350'. Drill out from under surface casing with 10# brine water and continue drilling with 10# brine to approx. 2200'. At 2200' - Mud up: MW should be 10#, Visc - 32, WL - 10 to prepare hole for coring. Continue drilling to TD maintaining this mud program.
12. Testing, Logging & Coring Program:
 - a. Testing: No drill stem tests will be conducted.
 - b. Coring: Plan to core this well from approx. 2400' to approx. 2670'.
 - c. Logging: Will run Open Hole Logs prior to running 4 1/2" casing.
13. Potential Hazards:

None are expected. Above described BOP should take care of any blowout. Numerous wells have been drilled in this area without problems.
14. Anticipated Starting Date & Duration:

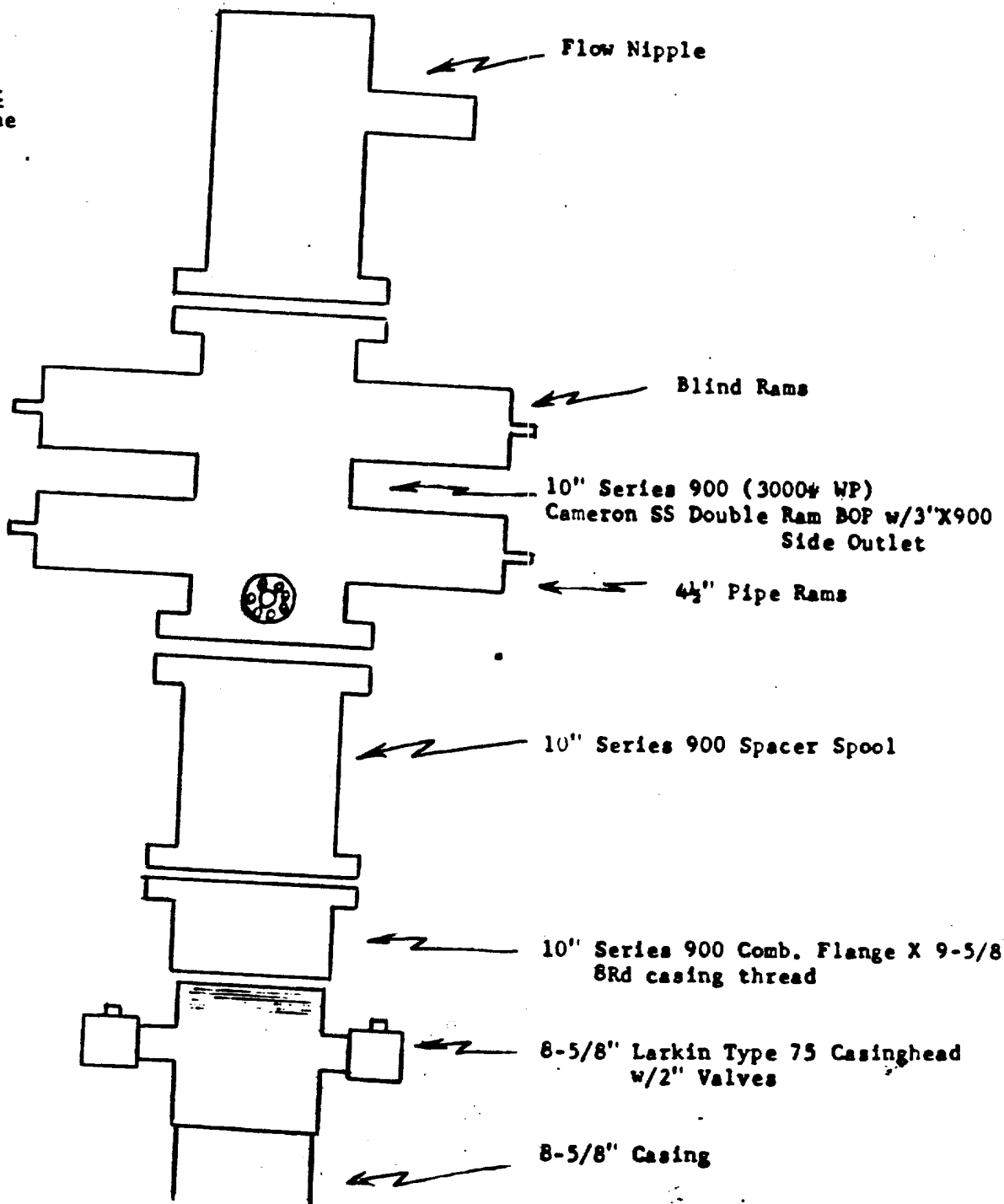
Plans are to begin drilling operations about October 1. Approximately 6 days are required to drill the well and 2 weeks for completion.
15. Other Facets:

None

RECEIVED

OIL & GAS
MINERALS MGMT. SERVICE
ROSWELL, NEW MEXICO

Closing Unit
4 Stage Payne



B O P Schematic

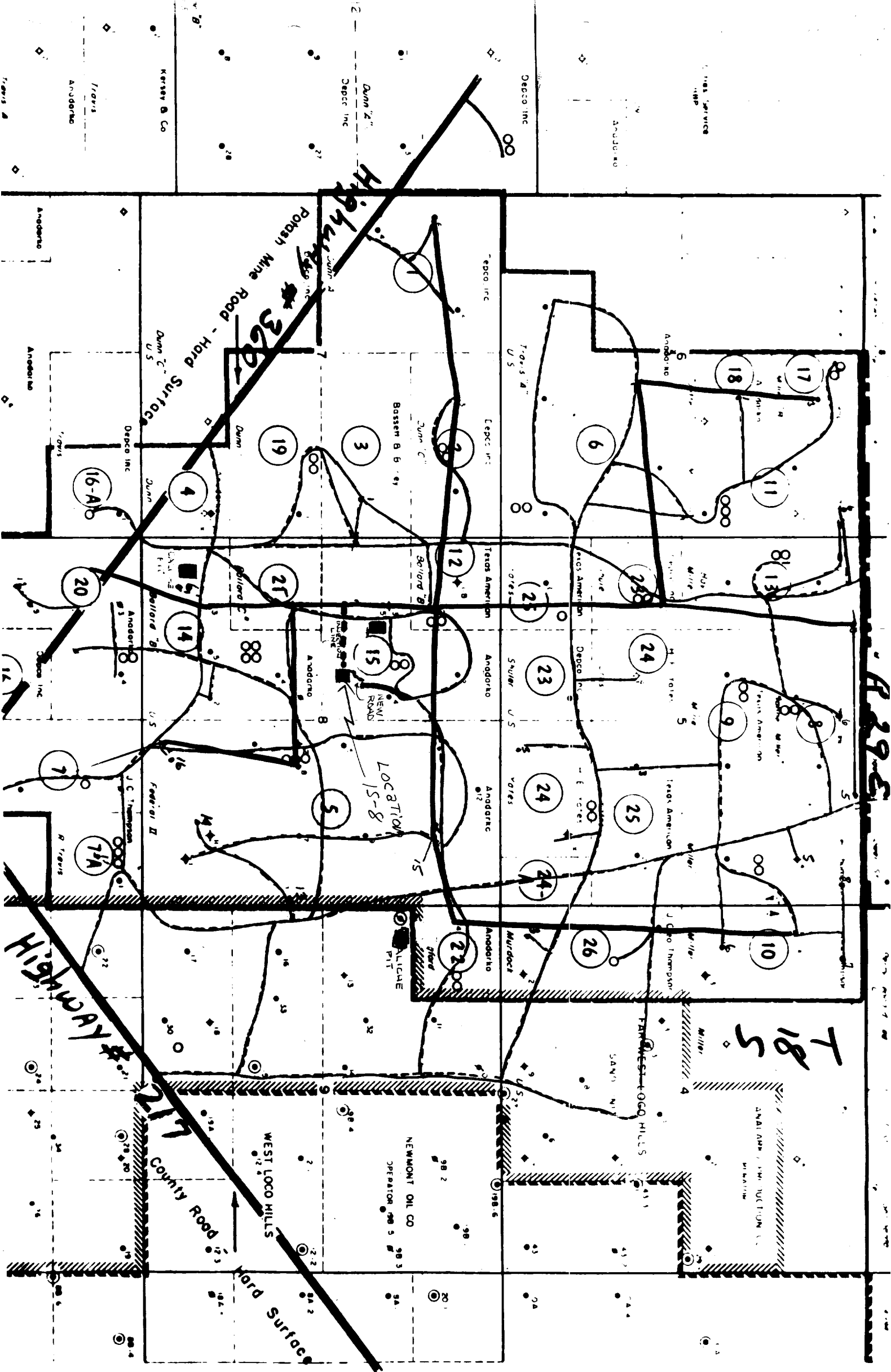


EXHIBIT #2

A 29 E

T 18 S

