

NM OIL CONS. COMMISSION
Drawer DD
Artesia, NM 88210
UNITED STATES
DEPARTMENT OF THE INTERIOR
GEOLOGICAL SURVEY

SUBMIT IN TRIPLICA
(Other instructions on reverse side)

Form approved.
Budget Bureau No. 42-R1425.

30-015-24268

c/5F

APPLICATION FOR PERMIT TO DRILL, DEEPEN, OR PLUG BACK

1a. TYPE OF WORK
DRILL ☒ DEEPEN ☐ PLUG BACK ☐

b. TYPE OF WELL
OIL WELL ☒ GAS WELL ☐ OTHER ☐

2. NAME OF OPERATOR
PREMIER PRODUCTION COMPANY

3. ADDRESS OF OPERATOR
324 W. Main Artesia, NM. 88210

4. LOCATION OF WELL (Report location clearly and in accordance with any State requirements.)
At surface 2310' FNL & 2310' FEL
At proposed prod. zone Same

14. DISTANCE IN MILES AND DIRECTION FROM NEAREST TOWN OR POST OFFICE*
25 Mi.

15. DISTANCE FROM PROPOSED* LOCATION TO NEAREST PROPERTY OR LEASE LINE, FT.
(Also to nearest drlg. unit line, if any) 330'

18. DISTANCE FROM PROPOSED LOCATION* TO NEAREST WELL, DRILLING, COMPLETED, OR APPLIED FOR, ON THIS LEASE, FT.
1650'

21. ELEVATIONS (Show whether DF, RT, GR, etc.)
GL. 3453

16. NO. OF ACRES IN LEASE
320

17. NO. OF ACRES ASSIGNED TO THIS WELL
40

19. PROPOSED DEPTH
3300'

20. ROTARY OR CABLE TOOLS
Rotary

22. APPROX. DATE WORK WILL START*
ASAP

5. LEASE DESIGNATION AND SERIAL NO.
LC 055696

6. IF INDIAN, ALLOTTEE OR TRIBE NAME

7. UNIT AGREEMENT NAME

8. FARM OR LEASE NAME
YATES PREMIER FEDERAL

9. WELL NO.
3

10. FIELD AND POOL, OR WILDCAT
Undes. San Andres

11. SEC., T., R., M., OR BLK. AND SURVEY OR AREA
SEC. 22 T-18S R-29E

12. COUNTY OR PARISH
Eddy

13. STATE
NM.

SEP 15 1982

O.C.D.
ARTESIA, OFFICE

ut. G.

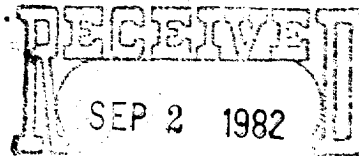
PROPOSED CASING AND CEMENTING PROGRAM

SIZE OF HOLE	SIZE OF CASING	WEIGHT PER FOOT	SETTING DEPTH	QUANTITY OF CEMENT
12 1/4"	8 5/8"	24 lb.	370'	300 SAX Circulate And/or Reddy Mi
7 7/8"	4 1/2"	10.5 lb.	TD.	1000 Sax

We propose to drill test the san andres, and intermediate formations. Will Set approximately 370' of surface casing to shut off gravel and casing. If commercial, will run 4 1/2" casing and stimulate for production.

MUD PROGRAM: FW GEL and LCM to Td.

BOP PROGRAM: BOP will be installed at outset and tested daily.



OIL & GAS
U.S. GEOLOGICAL SURVEY
ROSWell, NEW MEXICO

Posted ID-1
9-24-82
API & BK

IN ABOVE SPACE DESCRIBE PROPOSED PROGRAM: If proposal is to deepen or plug back, give data on present productive zone and proposed new productive zone. If proposal is to drill or deepen directionally, give pertinent data on subsurface locations and measured and true vertical depths. (Give blowout preventer program, if any.)

24. SIGNED *George H. Stewart* TITLE *operator* DATE *8-30-82*

(This space for Federal or State office use)
(Off. Sgd.) **GEORGE H. STEWART**

PERMIT NO. _____ APPROVAL DATE _____

APPROVED BY **SEP 13 1982** TITLE _____ DATE _____

CONDITIONS OF APPROVAL, IF ANY:
JAMES A. GILLHAM
DISTRICT SUPERVISOR

NEW MEXICO OIL CONSERVATION COMMISSION
WELL LOCATION AND ACREAGE DEDICATION PLAT

Form O-102
Supersedes C-128
Effective 1-1-65

All distances must be from the outer boundaries of the Section.

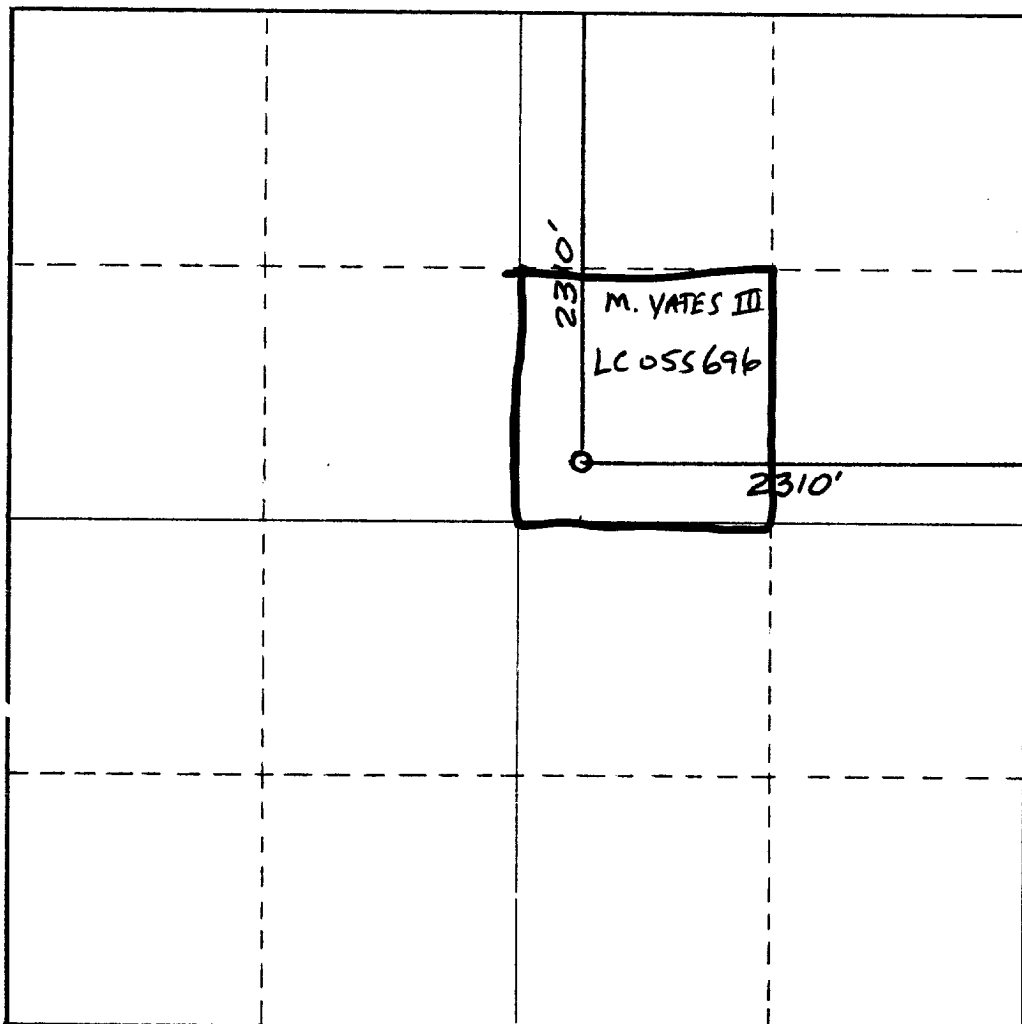
Operator PREMIER PRODUCTION CO.			Lease Yates Premier Federal		Well No. 3
Unit Letter G	Section 22	Township 18 South	Range 29 East	County Eddy	
Actual Footage Location of Well: 2310 feet from the North line and 2310 feet from the East line					
Ground Level Elev: 3453.	Producing Formation PE San Andres		Pool UNDES. SAN ANDRES	Dedicated Acreage: 40 Acres	

- Outline the acreage dedicated to the subject well by colored pencil or hachure marks on the plat below.
- If more than one lease is dedicated to the well, outline each and identify the ownership thereof (both as to working interest and royalty).
- If more than one lease of different ownership is dedicated to the well, have the interests of all owners been consolidated by communitization, unitization, force-pooling, etc?

☐ Yes ☒ No If answer is "yes," type of consolidation _____

If answer is "no," list the owners and tract descriptions which have actually been consolidated. (Use reverse side of this form if necessary.) _____

No allowable will be assigned to the well until all interests have been consolidated (by communitization, unitization, forced-pooling, or otherwise) or until a non-standard unit, eliminating such interests, has been approved by the Commission.



CERTIFICATION

I hereby certify that the information contained herein is true and complete to the best of my knowledge and belief.

Name
LARRY JONES

Position
Operator

Company
Premier Production Co.

Date
8-30-82

I, **DAN R. REDDY**, a duly licensed Professional Engineer in the State of New Mexico, certify that the well location shown on this plat was plotted from field notes of actual surveys made by me or under my supervision, and that the same is true and correct to the best of my knowledge and belief.

Date Surveyed
August 10, 1982

Registered Professional Engineer and/or Land Surveyor

Dan R. Reddy

Certificate No.
NM PE&LS #5412

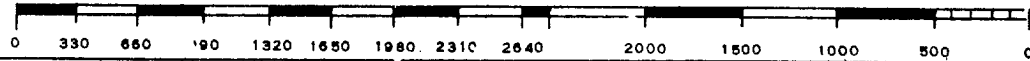
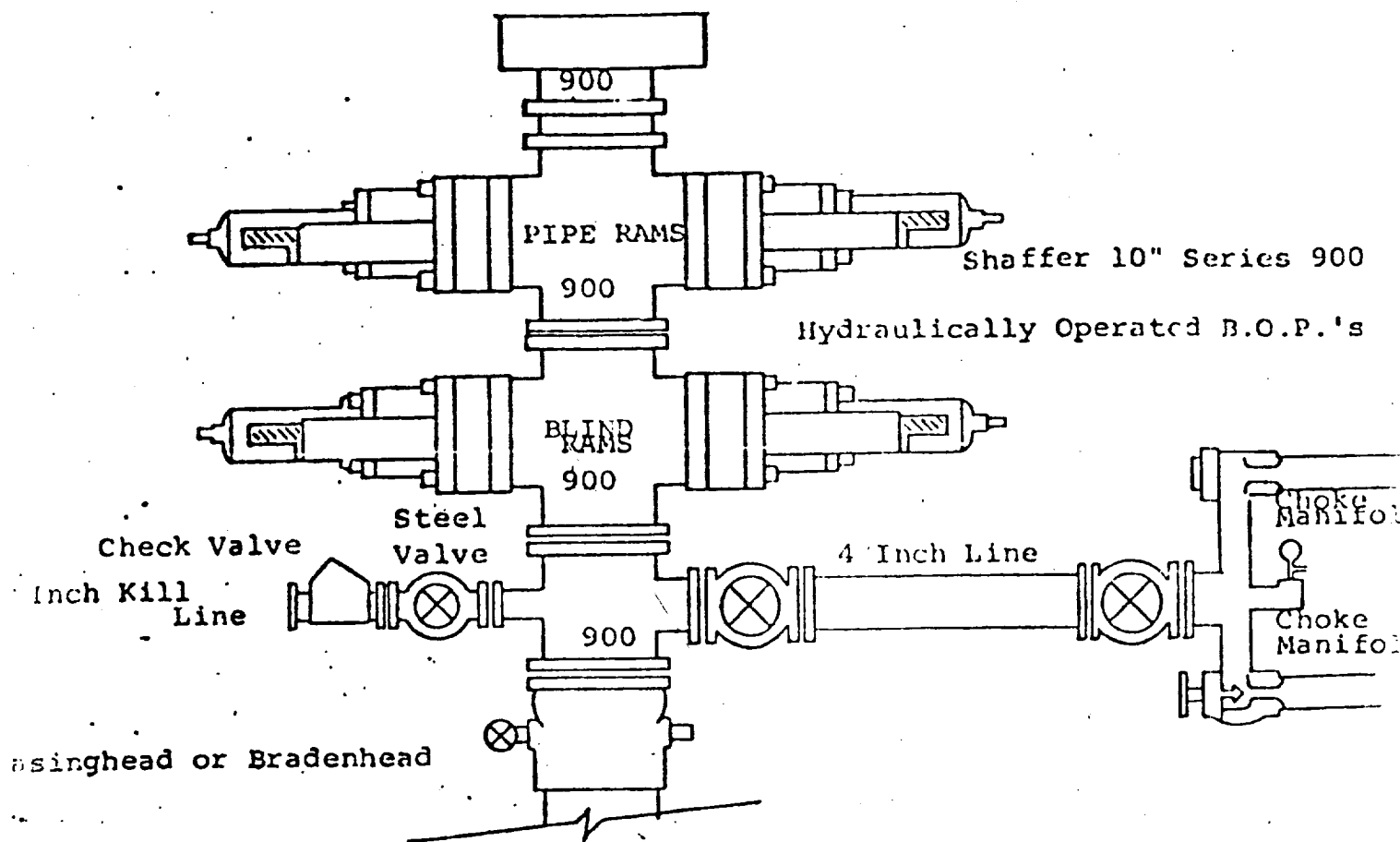


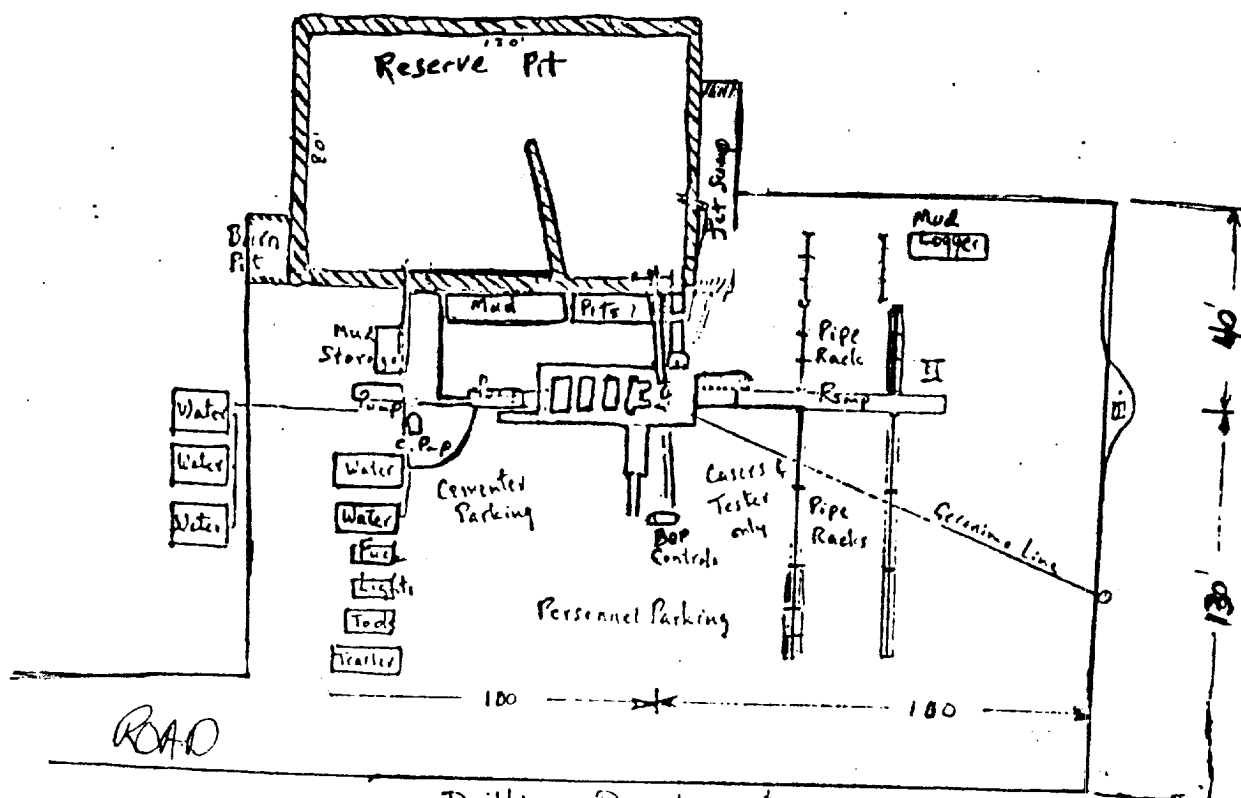
EXHIBIT B



THE FOLLOWING CONSTITUTE MINIMUM BLOWOUT PREVENTER REQUIREMENTS

1. All preventers to be hydraulically operated with secondary manual control installed prior to drilling out from under casing.
2. Choke outlet to be a minimum of 4" diameter.
3. Kill line to be of all steel construction of 2" minimum diameter.
4. All connections from operating manifolds to preventers to be all steel. hole or tube a minimum of one inch in diameter.
5. The available closing pressure shall be at least 15% in excess of that required with sufficient volume to operate the B.O.P.'s.
6. All connections to and from preventer to have a pressure rating equivalent to that of the B.O.P.'s.
7. Inside blowout preventer to be available on rig floor.
8. Operating controls located a safe distance from the rig floor.
9. Hole must be kept filled on trips below intermediate casing. Operator not responsible for blowouts resulting from not keeping hole full.
10. D. P. float must be installed and used below zone of first gas intrusion

EXHIBIT C



Drilling Rig Layout

