

UNITED STATES
DEPARTMENT OF THE INTERIOR

GEOLOGICAL SURVEY

APPLICATION FOR PERMIT TO DRILL, DEEPEN, OR PLUG BACK

1a. TYPE OF WORK

DRILL ☒DEEPEN ☐PLUG BACK ☐

b. TYPE OF WELL

OIL
WELL ☒GAS
WELL ☐OTHER ☐SINGLE
ZONE ☒MULTIPLE
ZONE ☐

2. NAME OF OPERATOR

Martin Yates III (MYCO) ✓

RECEIVED

3. ADDRESS OF OPERATOR

207 S. 4th, Artesia, New Mexico 88210

SEP 28 1982

4. LOCATION OF WELL (Report location clearly and in accordance with any State requirements)

At surface 1650' FSL and 1650' FWL

At proposed prod. zone
sameO. C. D.
ARTESIA, OFFICE

14. DISTANCE IN MILES AND DIRECTION FROM NEAREST TOWN OR POST OFFICE*

Approximately 25 miles SE of Artesia, NM.

15. DISTANCE FROM PROPOSED*

LOCATION TO NEAREST

PROPERTY OR LEASE LINE, FT.

(Also to nearest drlg. unit line, if any)

1650'

16. NO. OF ACRES IN LEASE

640

17. NO. OF ACRES ASSIGNED
TO THIS WELL

40

18. DISTANCE FROM PROPOSED LOCATION*

TO NEAREST WELL, DRILLING, COMPLETED,
OR APPLIED FOR, ON THIS LEASE, FT.

19. PROPOSED DEPTH

appr. 3400'

20. ROTARY OR CABLE TOOLS

Rotary

21. ELEVATIONS (Show whether DF, RT, GR, etc.)

3478' GL

22. APPROX. DATE WORK WILL START*

ASAP

23.

PROPOSED CASING AND CEMENTING PROGRAM

SIZE OF HOLE	SIZE OF CASING	WEIGHT PER FOOT	SETTING DEPTH	QUANTITY OF CEMENT
12 1/2"	8 5/8"	24# J-55	400'	250 sx circulated
7 7/8"	4 1/2"	9.5#	TD	300 sx

Plan to test San Andres formation.

MUD PROGRAM: FW gel to 480' cut brine, gel and possible KCL to TD.BOP PROGRAM: BOP's will be installed at the offset and tested daily.

RECEIVED

SEP 13 1982

OIL & GAS
MINERALS MGMT. SERVICE
ROSWEIL, NEW MEXICO

IN ABOVE SPACE DESCRIBE PROPOSED PROGRAM: If proposal is to deepen or plug back, give data on present production and whether in productive zone. If proposal is to drill or deepen directionally, give pertinent data on subsurface locations and measured and true vertical depths. Give blowout preventer program, if any.

24.

SIGNED

Cy Cowan
APPROVED

TITLE Regulatory Coordinator DATE 9/10/82

(This space for Federal or State office use)

PERMIT NO.

(Orig. Sgd.) GEORGE H. STEWART

APPROVAL DATE

APPROVED BY

CONDITIONS OF APPROVAL, IF ANY:

JAMES A. GILLHAM
DISTRICT SUPERVISOR

TITLE

DATE

N MEXICO OIL CONSERVATION COMMISSION
WELL LOCATION AND ACREAGE DEDICATION PLAT

Form C-102
Supersedes C-128
Effective 1-1-65

All distances must be from the outer boundaries of the Section.

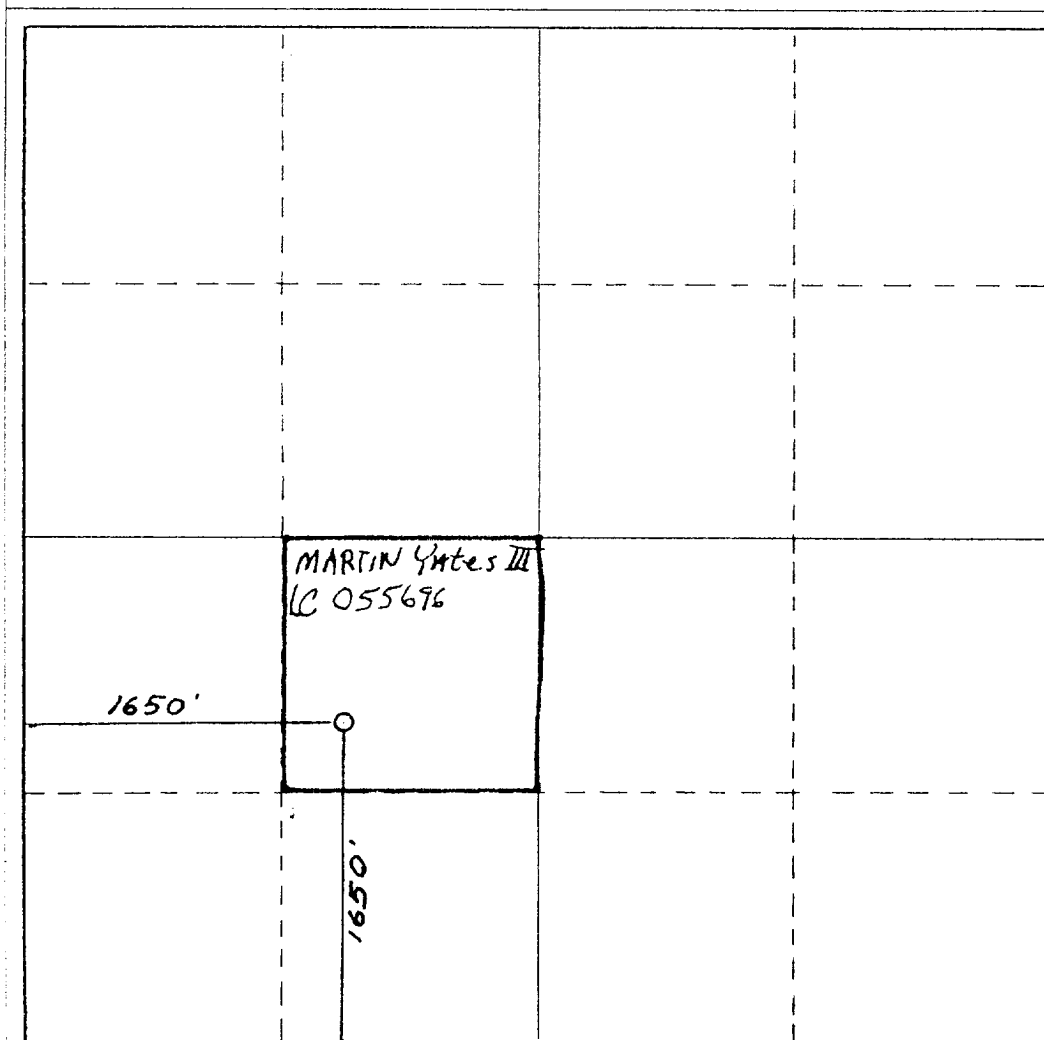
Operator MYCO		Lease Boulter Federal		Well No. 4
Unit Letter K	Section 14	Township 18 South	Range 29 East	County Eddy
Actual Footage Location of Well: 1650 feet from the South line and 1650 feet from the West line				
Ground Level Elev. 3478	Producing Formation SAN ANDRES	Pool Lacohills Grayberg SA	Dedicated Acreage: 40 Acres	

1. Outline the acreage dedicated to the subject well by colored pencil or hachure marks on the plat below.
2. If more than one lease is dedicated to the well, outline each and identify the ownership thereof (both as to working interest and royalty).
3. If more than one lease of different ownership is dedicated to the well, have the interests of all owners been consolidated by communitization, unitization, force-pooling, etc?

☐ Yes ☐ No If answer is "yes," type of consolidation _____

If answer is "no," list the owners and tract descriptions which have actually been consolidated. (Use reverse side of this form if necessary.) _____

No allowable will be assigned to the well until all interests have been consolidated (by communitization, unitization, forced-pooling, or otherwise) or until a non-standard unit, eliminating such interests, has been approved by the Commission.



CERTIFICATION

I hereby certify that the information contained herein is true and complete to the best of my knowledge and belief.

Cy Cowan

Name

Cy Cowan

Position

Regulatory Coordinator

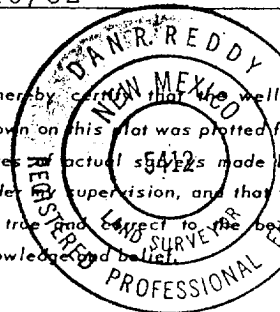
Company

Yates Petroleum Corp.

Date

9/10/82

I hereby certify that the well location shown on this plat was plotted from field notes of actual surveys made by me or under my supervision, and that the same is true and correct to the best of my knowledge and belief.



Date Surveyed

9/6/82

Registered Professional Engineer and/or Land Surveyor

Dan R. Reddy

Certificate No.

NMPE&LS # 5412



YATES PETROLEUM CORPORATION
Gulter Federal #4
1650' FSL & 1650' FWL
Sec. 14-T18S-R29E

In conjunction with Form 9-331C, Application for Permit to Drill subject well, Yates Petroleum Corporation submits the following ten items of pertinent information in accordance with USGS requirements.

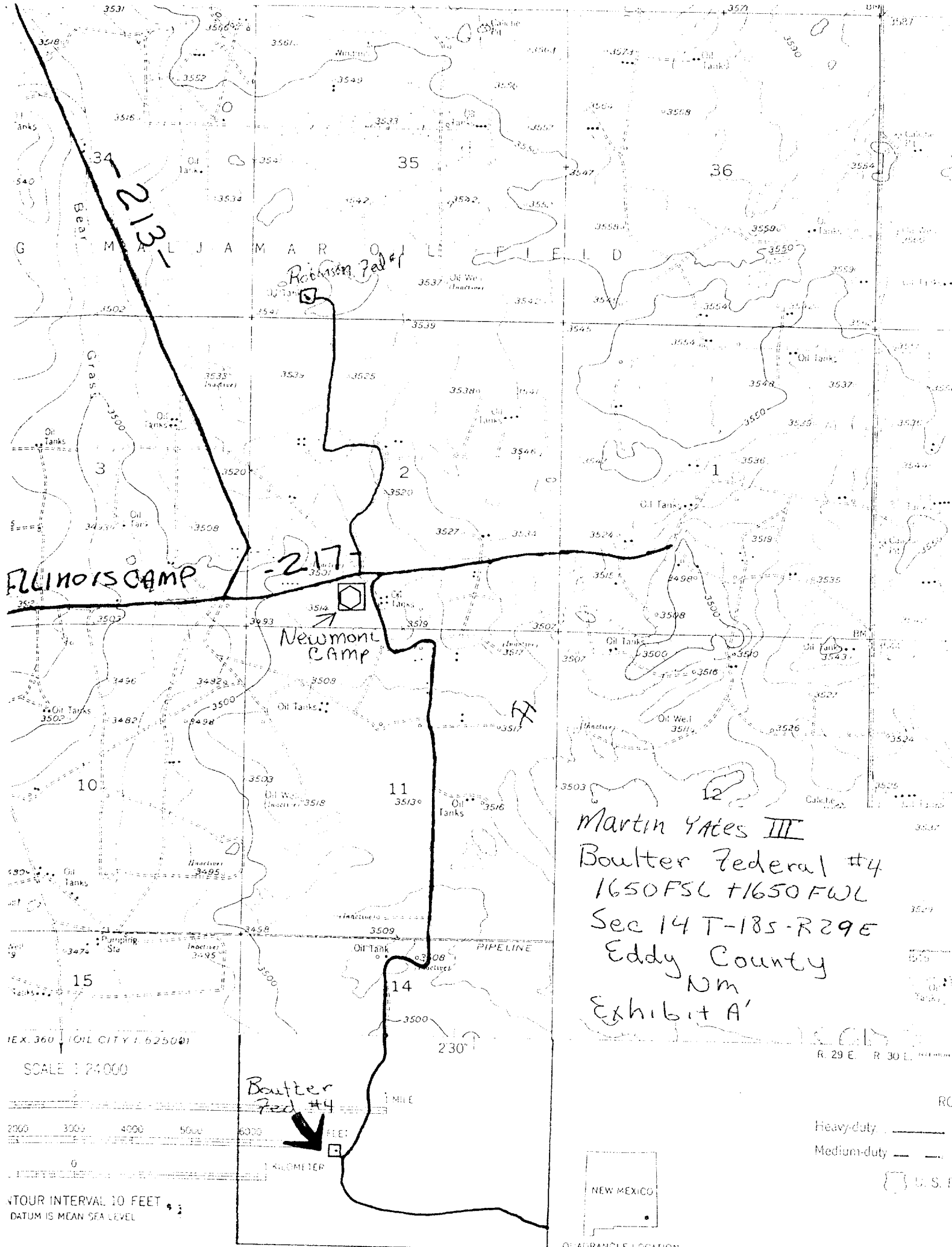
1. The geologic surface formation is sandy loam.
2. The estimated tops of geologic markers are as follows:

<u>Base of Salt</u>	<u>895'</u>
<u>Yates</u>	<u>1055'</u>
<u>7 Rivers</u>	<u>1465'</u>
<u>Queen</u>	<u>2080'</u>
<u>Grayburg</u>	<u>2445'</u>
<u>Loco Hills</u>	<u>2565'</u>
<u>San Andres</u>	<u>2930'</u>
<u>TD</u>	<u>3400'</u>
3. The estimated depths at which anticipated water, oil or gas formations are expected to be encountered:

Water: 150'

Oil or Gas: 2500'-2945'
4. Proposed Casing Program: See Form 9-331C.
5. Pressure Control Equipment: See Form 9-331C and Exhibit B.
6. Mud Program: See Form 9-331C.
7. Auxiliary Equipment: Kelly Cock; pit level indicators and flow sensor equipment;
sub with full-opening valve on floor, drill pipe connection.
8. Testing, Logging and Coring Program:

Samples: 10' samples from surface.
DST's: Not likely
Coring: Not likely
Logging: CNL-FDC TD to csg, CNL-2 to surface, DLL TD to csg w/min RxO
9. No abnormal pressures or temperatures are anticipated.
10. Anticipated starting date: As soon as possible after approval.

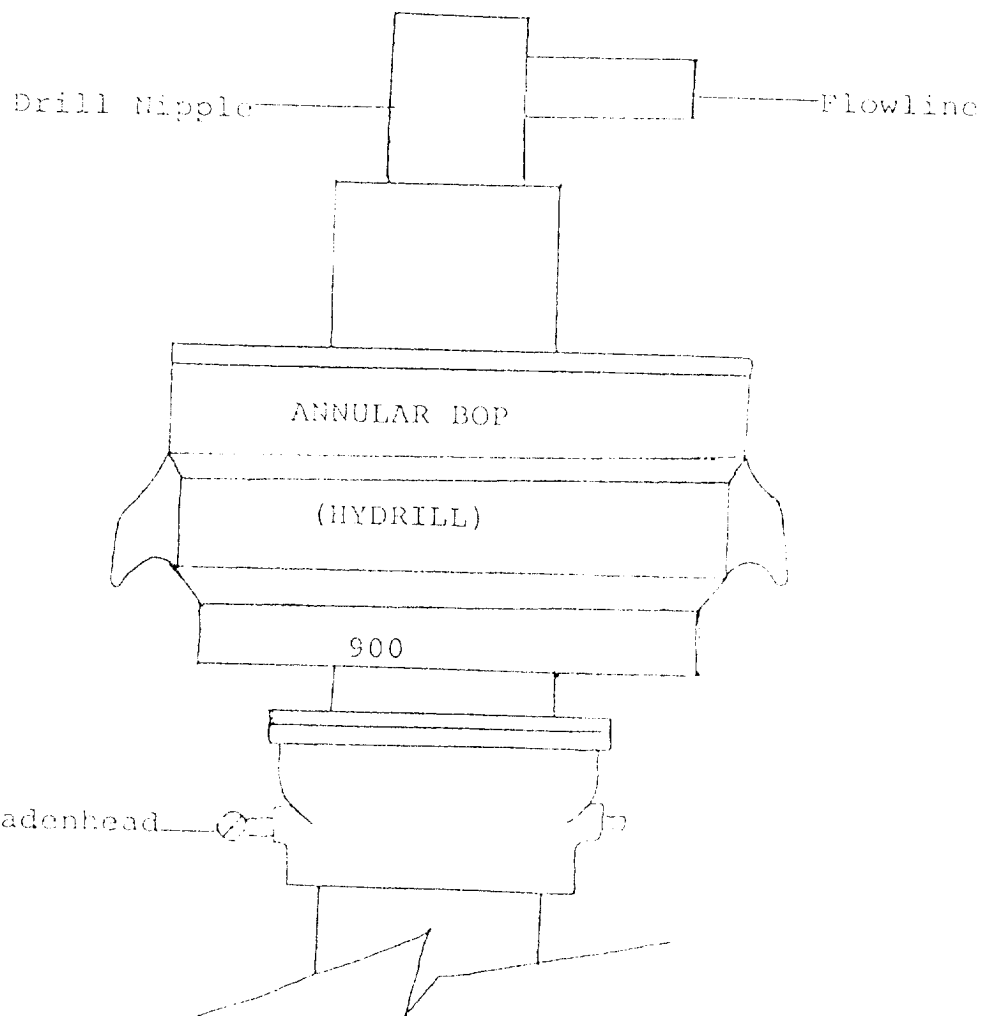


Martin Yates III
Boulter Federal #4
1650 FSL + 1650 FWL
Sec 14 T-18S-R29E
Eddy County
Nm
Exhibit A'

SCALE 1:24,000
2000 3000 4000 5000 6000
0
TOUR INTERVAL 10 FEET
DATUM IS MEAN SEA LEVEL

R. 29 E. R. 30 E.
RC
Heavy-duty
Medium-duty
U.S. B.

NEW MEXICO
QUADRANGLE LOCATION



THE FOLLOWING CONSTITUTE MINIMUM BLOWOUT PREVENTER REQUIREMENTS

1. All preventers to be hydraulically operated with secondary manual controls installed prior to drilling out from under casing.
2. All connections from operating manifolds to preventers to be all steel. Hole or tube a minimum of one inch in diameter.
3. The available closing pressure shall be at least 15% in excess of that required with sufficient volume to operate the BOP's.
4. All connections to and from preventer to have a pressure rating equivalent to that of the BOP's.
5. Hole must be kept filled on trips below intermediate casing.

EXHIBIT C

