

UNITED STATES
DEPARTMENT OF THE INTERIOR(Other instructions on
reverse side)

GEOLOGICAL SURVEY Artesia, NM 88210

APPLICATION FOR PERMIT TO DRILL, DEEPEN, OR PLUG BACK

1a. TYPE OF WORK

DRILL ☒DEEPEN ☐PLUG BACK ☐

b. TYPE OF WELL

OIL
WELL ☐GAS
WELL ☒

OTHER

SINGLE
ZONENOV 17 1982 MULTIPLE
ZONE ☐

2. NAME OF OPERATOR

Yates Petroleum Corporation

O. C. D.

3. ADDRESS OF OPERATOR

ARTESIA, OFFICE

207 S. 4th, Artesia, New Mexico 88210

4. LOCATION OF WELL (Report location clearly and in accordance with any State requirements.)*

At surface

660' FNL and 1980' FEL

At proposed prod. zone

same

14. DISTANCE IN MILES AND DIRECTION FROM NEAREST TOWN OR POST OFFICE*

Approximately 24 miles SE of Artesia, NM

15. DISTANCE FROM PROPOSED*

LOCATION TO NEAREST
PROPERTY OR LEASE LINE, FT.
(Also to nearest drlg. unit line, if any)

660'

16. NO. OF ACRES IN LEASE

760

17. NO. OF ACRES ASSIGNED
TO THIS WELL

320

18. DISTANCE FROM PROPOSED LOCATION*

TO NEAREST WELL, DRILLING, COMPLETED,
OR APPLIED FOR, ON THIS LEASE, FT.

19. PROPOSED DEPTH

12,020'

20. ROTARY OR CABLE TOOLS

Rotary

21. ELEVATIONS (Show whether DF, RT, GR, etc.)

3484.7 GL

22. APPROX. DATE WORK WILL START*

ASAP

23. PROPOSED CASING AND CEMENTING PROGRAM

SIZE OF HOLE	SIZE OF CASING	WEIGHT PER FOOT	SETTING DEPTH	QUANTITY OF CEMENT
17 1/2"	13 3/8" J-55	48#	500'	550 circulated
12 1/2"	8 5/8" J-55	32#-24#-32#	3200'	as warranted CIRCULATE
7 7/8"	5 1/2" N-80	20#-17#-20#	TD	as warranted
or	4 1/2" N-80	13.5#-11.6#-13.5#		

We propose to drill and test the Morrow and intermediate formations. Will set approximately 500' of surface casing to shut off gravel and cavings and set the intermediate casing at approximately 3300'. Both strings will be circulated. If commercial, will run 5 1/2" or 4 1/2" and cement with at least 600' of cover.

MUD PROGRAM: 8.3# gel and LCM to 3250'; 8.6# water to 9500', 9.3#-10# brine, starch-driskpak to 11000'; 9.5#-10.5# brine-gel-driskpak-KCL to TD.

BOP PROGRAM: BOP's and hydril in 8 5/8" casing and tested, pipe rams tested daily, blind rams on trips, yellow jacket, pit level control and flow sensors on prior to Wolfcamp.

IN ABOVE SPACE DESCRIBE PROPOSED PROGRAM: If proposal is to deepen or plug back, give data on present productive zone and proposed new productive zone. If proposal is to drill or deepen directionally, give pertinent data on subsurface locations and measured and true vertical depths. Give blowout preventer program, if any.

24.

SIGNED

TITLE Regulatory Coordinator

DATE 10/21/82

(This space for Federal or State office use)

PERMIT NO.

APPROVAL DATE

APPROVED BY

TITLE

CONDITIONS OF APPROVAL, IF ANY:

RECEIVED

OCT 25 1982

NEW MEXICO OIL CONSERVATION COMMISSION
WELL LOCATION AND ACREAGE DEDICATION PLAT

RECEIVED

Form C-102
 Supersedes C-128
 Effective 1-1-65

NOV 17 1982

All distances must be from the outer boundaries of the Section.

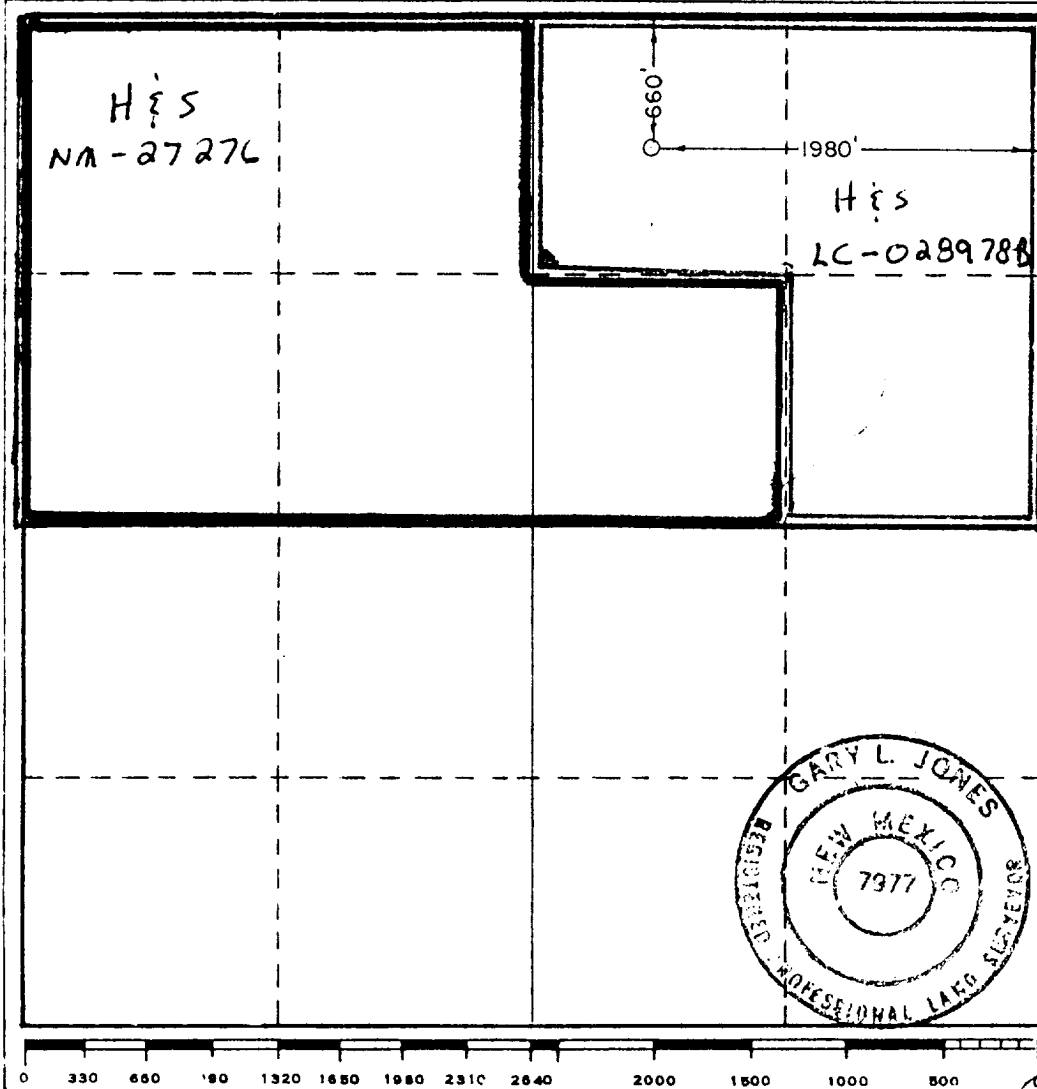
Operator YATES PETROLEUM CORPORATION			Lease Benson Deep Unit			O. C. No. ARTESIA, OFFICE 3		
Unit Letter B	Section 33	Township 18 South	Range 30 East	County Eddy				
Actual Footage Location of Well: 660 feet from the North line and 1980 feet from the East line								
Ground Level Elev. 3484.7'	Producing Formation Morrow		Pool Wildcat Morrow			Dedicated Acreage: 320 Acres		

1. Outline the acreage dedicated to the subject well by colored pencil or hatchure marks on the plat below.
2. If more than one lease is dedicated to the well, outline each and identify the ownership thereof (both as to working interest and royalty).
3. If more than one lease of different ownership is dedicated to the well, have the interests of all owners been consolidated by communitization, unitization, force-pooling, etc?

☐ Yes ☐ No If answer is "yes," type of consolidation _____

If answer is "no," list the owners and tract descriptions which have actually been consolidated. (Use reverse side of this form if necessary.) _____

No allowable will be assigned to the well until all interests have been consolidated (by communitization, unitization, forced-pooling, or otherwise) or until a non-standard unit, eliminating such interests, has been approved by the Commission.



CERTIFICATION

I hereby certify that the information contained herein is true and complete to the best of my knowledge and belief.

Ken Beardemphl

Name
Ken Beardemphl
 Position
Regulatory Coordinator
 Company
Yates Petroleum Corp.
 Date
10/15/82

I hereby certify that the well location shown on this plat was plotted from field notes of actual surveys made by me or under my supervision, and that the same is true and correct to the best of my knowledge and belief.

Date Surveyed
October 14, 1982
 Registered Professional Engineer and/or Land Surveyor

Gay 295

Certificate No.
7977

Benson Deep Unit #3
660' FNL and 1980' FEL
Sec. 33-T18S-R30E

NOV 17 1982

O. C. D.

ARTESIA, OFFICE

In conjunction with Form 9-331C, Application for Permit to Drill subject well, Yates Petroleum Corporation submits the following ten items of pertinent information in accordance with USGS requirements.

1. The geologic surface formation is sandy alluvium.
2. The estimated tops of geologic markers are as follows:

Anhydrite	255'	Wolfcamp	9485'
Base of Salt	1480'	Strawn	10585'
Yates	1680'	Atoka	10920'
Queen	2795'	Morrow Clastics	11470'
San Andres	3420'	Chester	11930'
Bone Spring Limestone	5505'	TD	12020'
3rd Bone Sand	9105'		

3. The estimated depths at which anticipated water, oil or gas formations are expected to be encountered:

Water: approximately 200'-240'

Oil or Gas: San Andres 3440', Wolfcamp 9520', Atoka 10940', Morrow 11490'

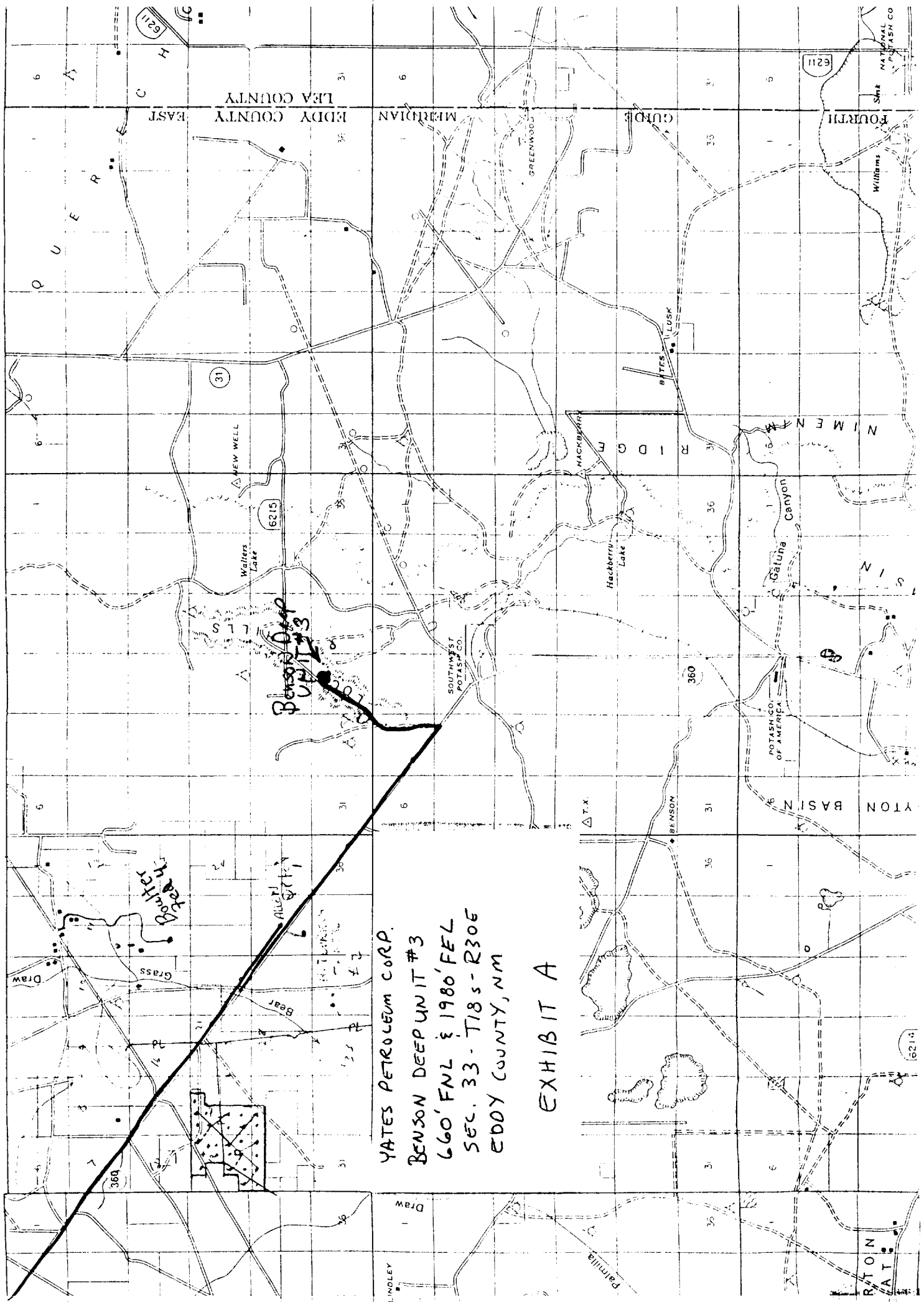
4. Proposed Casing Program: See Form 9-331C.
5. Pressure Control Equipment: See Form 9-331C and Exhibit B.
6. Mud Program: See Form 9-331C.
7. Auxiliary Equipment: Kelly Cock; pit level indicators and flow sensor equipment;
sub with full-opening valve on floor, drill pipe connection.
8. Testing, Logging and Coring Program:

Samples: 10' samples caught out from under surface casing to TD

DST's: as warranted below 5500'

Logging: CNL-FDC TD to 5000', CNL-GR to surface, DLL TD to 5000' w/min. RxO

Mud Logging: One man unit on @ 5000'.
9. No abnormal pressures or temperatures are anticipated.
10. Anticipated starting date: As soon as possible after approval.



Rotating head if necessary
Fill up Line

ROTATING
BOP
2000 psi

Flowline

ANGULAR BOP

(Hydrill)

Exhibit B

900

PIPE RAMS

900

Shaffer 10" Series 200

Hydraulically Operated B.O.P.'s

BLIND
RAMS

900

Check Valve

Steel
Valve

inch Kill
Line

4" Inch Line

Choke
Manifo

Choke
Manifo

Righead or Bradenhead

THE FOLLOWING CONSTITUTE MINIMUM BLOWOUT PREVENTER REQUIREMENTS

All preventers to be hydraulically operated with secondary manual controls installed prior to drilling out from under casing.

Choke outlet to be a minimum of 4" diameter.

Kill line to be of all steel construction of 2" minimum diameter.

All connections from operating manifolds to preventers to be all steel, hole or tube a minimum of one inch in diameter.

The available closing pressure shall be at least 15% in excess of that required with sufficient volume to operate the B.O.P.'s.

All connections to and from preventer to have a pressure rating equivalent to that of the B.O.P.'s.

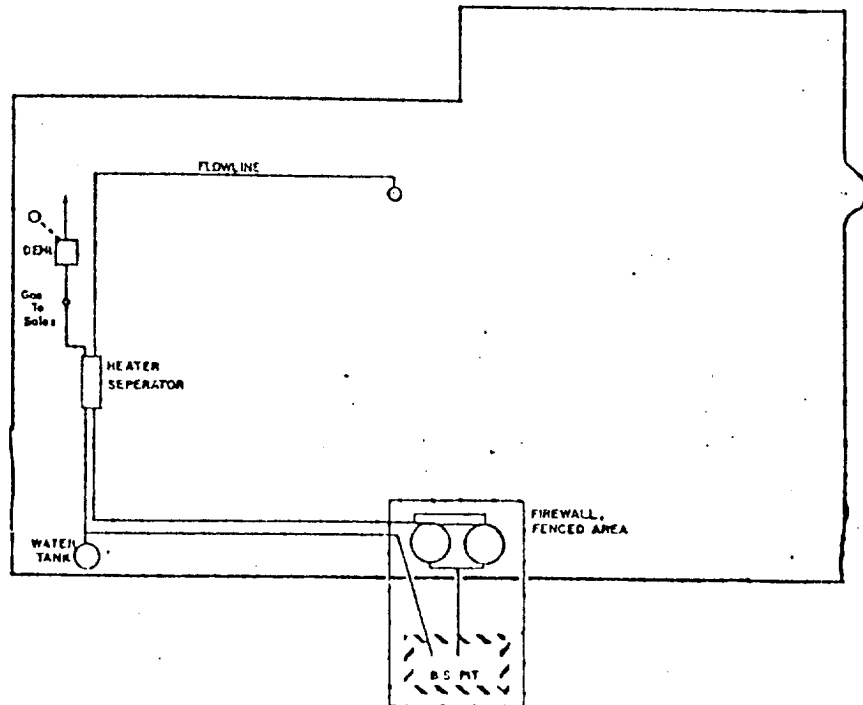
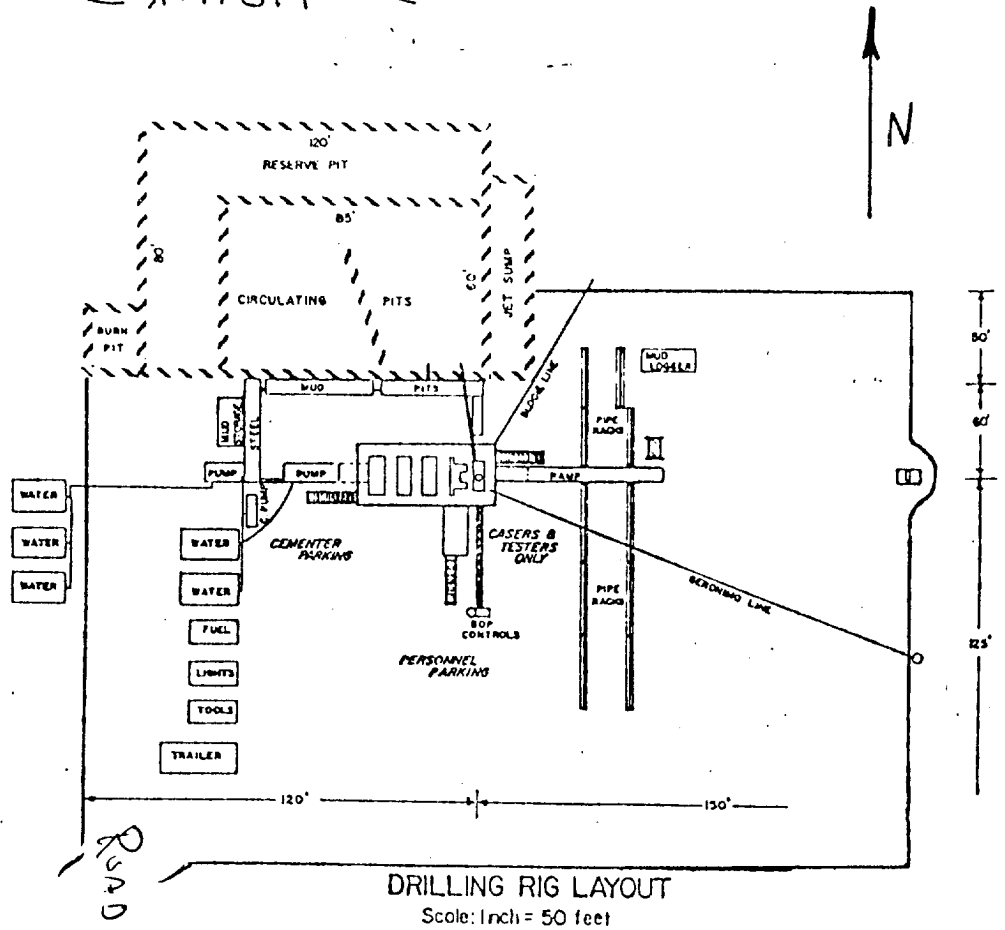
Inside blowout preventer to be available on rig floor.

Operating controls located a safe distance from the rig floor.

Hole must be kept filled on trips below intermediate casing. Operator not responsible for blowouts resulting from not keeping hole full.

D. P. float must be installed and used below zone of first gas intrusion.

Exhibit C





IN REPLY
REFER TO:

United States Department of the Interior

MINERALS MANAGEMENT SERVICE

SOUTH CENTRAL REGION

505 MARQUETTE AVENUE, N.W., SUITE 815
ALBUQUERQUE, NEW MEXICO 87102

RECEIVED

NOV 17 1982

O. C. D.
ARTESIA, OFFICE

15 NOV 1982

Yates Petroleum Corporation
207 South 4th
Artesia, New Mexico 88210

Dear Sir:

Your application for Permit to Drill well No. 3 Benson Deep Unit in the NW¹/₄NE¹/₄ sec. 33, T.18S., R.30E., Eddy County, New Mexico, lease LC-028978-B, to a depth of 12,020 feet to test the Morrow formation in the oil-potash area, is hereby approved as amended by stipulations attached to the application.

One copy of the application is returned herewith. Please notify the District Supervisor, Minerals Management Service, Roswell, New Mexico, in sufficient time for a representative to witness all cementing operations.

Sincerely yours,

(Orig. Signed)--Michael F. Reitz
Gene F. Daniel
Deputy Minerals Manager
Oil and Gas

Enclosure

cc:

- ✓ NMOCD (2)
- BLM - Carlsbad
- MM, SCR
- DMM - Mining (2)
- Regional Files
- Roswell District Files
- Artesia Sub-District
- Suspense File
- ARF
- RCF

JAGillham/ml1/11-3-82



© Copyrighted Reproduction Prohibited

F.R. 11-8-82
PD 12,020 RT (Morrow)

12-21-82 MIRT
12-28-82 Ø2964
1-11-83 Ø6690
1-18-83 Ø8815
1-25-83 Ø10,438
2-1-83 Ø11,844
2-8-83 TD12055; woc

IC 30-015-70406-82