

APPLICATION FOR PERMIT TO DRILL, DEEPEN, OR PLUG BACK

1a. TYPE OF WORK

DRILL ☒

DEEPEN ☐

PLUG BACK ☐

b. TYPE OF WELL

OIL WELL ☒

GAS WELL ☐

OTHER ☐

SINGLE ZONE ☐

MULTIPLE ZONE ☐

2. NAME OF OPERATOR

Premier Production Company

3. ADDRESS OF OPERATOR

324 W. Main, Artesia, NM 88210

4. LOCATION OF WELL (Report location clearly and in accordance with State requirements.)

At surface

990' FNL & 990' FEL

At proposed prod. zone

14. DISTANCE IN MILES AND DIRECTION FROM NEAREST TOWN OR POST OFFICE*

Approximately 25mi. E/SE of Artesia, New Mexico.

15. DISTANCE FROM PROPOSED*

LOCATION TO NEAREST

PROPERTY OR LEASE LINK, FT.

(Also to nearest drlg. unit line, if any)

990'

18. DISTANCE FROM PROPOSED LOCATION*

TO NEAREST WELL, DRILLING, COMPLETED,

OR APPLIED FOR, ON THIS LEASE, FT.

1320'

16. NO. OF ACRES IN LEASE

320

19. PROPOSED DEPTH

3300'

17. NO. OF ACRES ASSIGNED TO THIS WELL

40

20. ROTARY OR CABLE TOOLS

Rotary

21. ELEVATIONS (Show whether DF, RT, GR, etc.)

GL 3463

22. APPROX. DATE WORK WILL START*

ASAP

23.

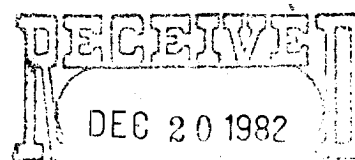
PROPOSED CASING AND CEMENTING PROGRAM

SIZE OF HOLE	SIZE OF CASING	WEIGHT PER FOOT	SETTING DEPTH	QUANTITY OF CEMENT
12 1/4"	8-5/8"	24# J55	370'	300sax circulate and/or reddy mix
7-7/8"	4 1/2"	10.5#	TD	1000 sax

We propose to drill & test the San Andres & intermediate formations. Will set approximately 370' of surface casing to shut off gravel & casing. If commercial, will run 4 1/2" casing, cement & stimulate for production.

Mud Program: FW gel & LCM to TD.

BOP Program: BCP will be installed at outset and tested daily.



OIL & GAS
U.S. GEOLOGICAL SURVEY
KOSVSH, NEW MEXICO

Posted 12-18-82
1-7-83

IN ABOVE SPACE DESCRIBE PROPOSED PROGRAM: If proposal is to deepen or plug back, give data on present productive zone and proposed new productive zone. If proposal is to drill or deepen directionally, give pertinent data on subsurface locations and measured and true vertical depths. Give blowout preventer program, if any.

24.

SIGNED

TITLE operator

DATE 12-8-82

(This space for Federal or State office use)

PERMIT NO.

APPROVED

APPROVAL DATE

APPROVED BY

(ORIG. SGD.) DAVID R. GLASS

TITLE

DATE

CONDITIONS OF

DEC 20 1982

For JAMES A. GILLHAM
DISTRICT SUPERVISOR

NEW MEXICO OIL CONSERVATION COMMISSION
WELL LOCATION AND ACREAGE DEDICATION PLAT

Form C-102
Supersedes C-128
Effective 1-1-65

All distances must be from the outer boundaries of the Section.

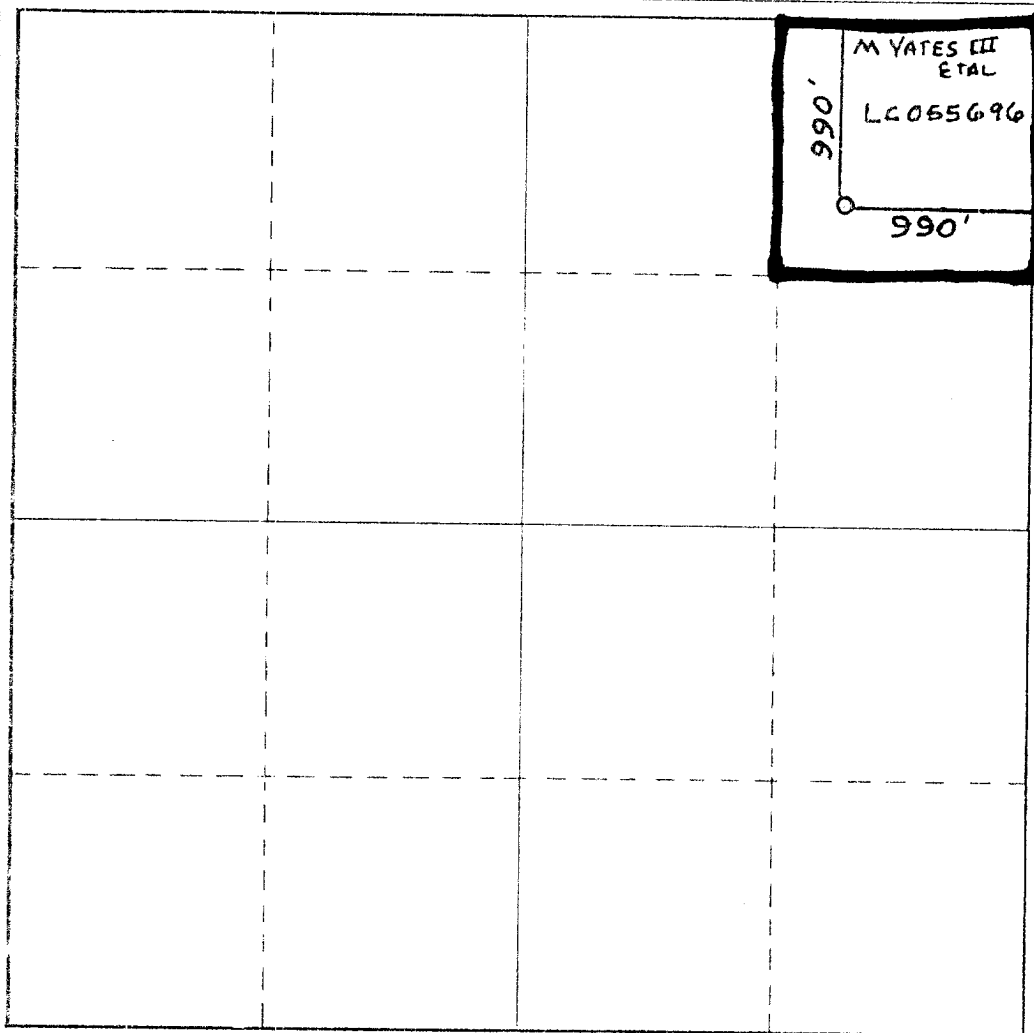
Operator PREMIER PRODUCTION CO.			Lease Yates Premier Federal			Well No. 4		
Unit Letter A	Section 22	Township 18 South	Range 29 East	County Eddy				
Actual Footage Location of Well: 990 feet from the North line and 990 feet from the East line								
Ground Level Elev. 3463.		Producing Formation PI		Pool UNDES. SAN ANDRES			Dedicated Acreage: 40 Acres	

1. Outline the acreage dedicated to the subject well by colored pencil or hachure marks on the plat below.
2. If more than one lease is dedicated to the well, outline each and identify the ownership thereof (both as to working interest and royalty).
3. If more than one lease of different ownership is dedicated to the well, have the interests of all owners been consolidated by communitization, unitization, force-pooling, etc?

☐ Yes ☒ No If answer is "yes" type of consolidation _____

If answer is "no," list the owners and tract descriptions which have actually been consolidated. (Use reverse side of this form if necessary.) _____

No allowable will be assigned to the well until all interests have been consolidated (by communitization, unitization, forced-pooling, or otherwise) or until a non-standard unit, eliminating such interests, has been approved by the Commission.



CERTIFICATION

I hereby certify that the information contained herein is true and complete to the best of my knowledge and belief.

Name
LARRY JONES
Position
OPERATOR
Company
Premier Production Co
Date
12-7-82

I hereby certify that the well location shown on this plat was plotted from field notes of actual surveys made by me or under my supervision, and that the same is true and correct to the best of my knowledge and belief.

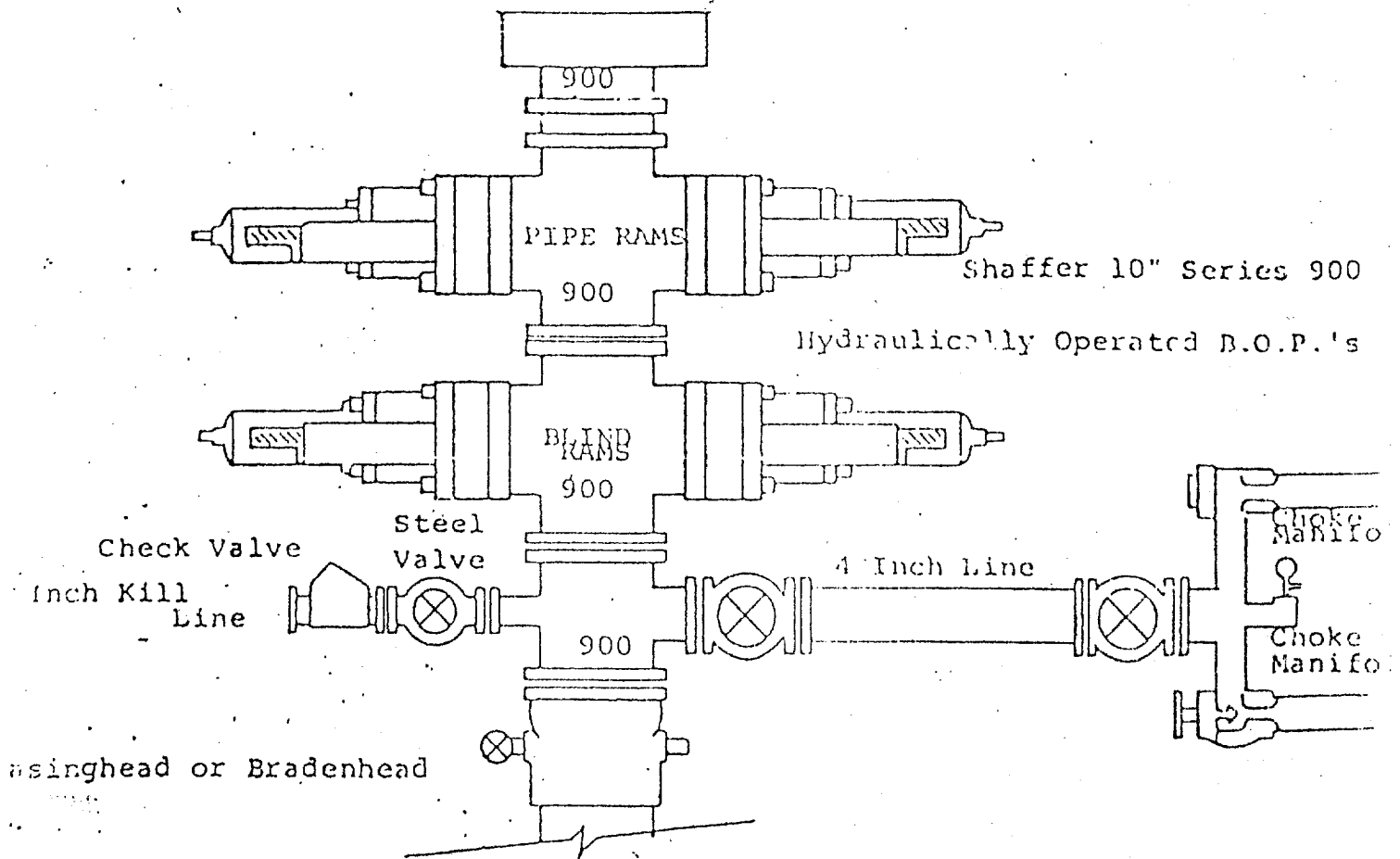
Date Surveyed
December 4, 1982

Registered Professional Engineer
and/or Land Surveyor

Certificate No.
NM PE&LS #5412

0 330 650 990 1320 1650 1980 2310 2640 2970 3300 3630 3960 4290 4620 4950 5280 5610 5940 6270 6600

EXHIBIT B



THE FOLLOWING CONSTITUTE MINIMUM BLOWOUT PREVENTER REQUIREMENTS

1. All preventers to be hydraulically operated with secondary manual control installed prior to drilling out from under casing.
2. Choke outlet to be a minimum of 4" diameter.
3. Kill line to be of all steel construction of 2" minimum diameter.
4. All connections from operating manifolds to preventers to be all steel, hole or tube a minimum of one inch in diameter.
5. The available closing pressure shall be at least 15% in excess of that required with sufficient volume to operate the B.O.P.'s.
6. All connections to and from preventer to have a pressure rating equivalent to that of the B.O.P.'s.
7. Inside blowout preventer to be available on rig floor.
8. Operating controls located a safe distance from the rig floor.
9. Hole must be kept filled on trips below intermediate casing. Operator not responsible for blowouts resulting from not keeping hole full.
10. D. P. float must be installed and used below zone of first gas intrusion.

Premier Production Co.

Yates Premier Fed. #4
990' FNL - 990' FEL
Section 22, T-18S R-29E
Eddy County, New Mexico

In conjunction with Form 9-331C, Application for Permit to Drill subject well, Premier Production Co. submits the following ten items of pertinent information in accordance with USGS requirements:

1. The geologic surface formation is sandy alluvium.
2. The estimate tops the geologic markers are as follows:

Yates	1050'
Seven Rivers	1355'
Queen	2061'
Grayburg	2375'
San Andres	2840'
TD	3300'

3. The estimated depths at which anticipated water and oil formations are expected to be encountered:

water	approximately 200' - 240'
oil	S.A. 2840' - 3100'

4. Proposed casing program: See Form 9-331C.
5. Pressure control equipment: See Form 9-331C and Exhibit B.
6. Mud Program: See Form 9-331C.
7. Auxiliary equipment: None
8. Testing, Logging and Coring Program:
Samples: 10' samples caught out from under surface casing to TD
DST's: As warranted
9. No abnormal pressures or temperatures are anticipated.
10. Anticipated Starting Date: As soon as possible after approval.

(EDDY COUNTY)
CITY QUADRANGLE
15-MINUTE SERIES

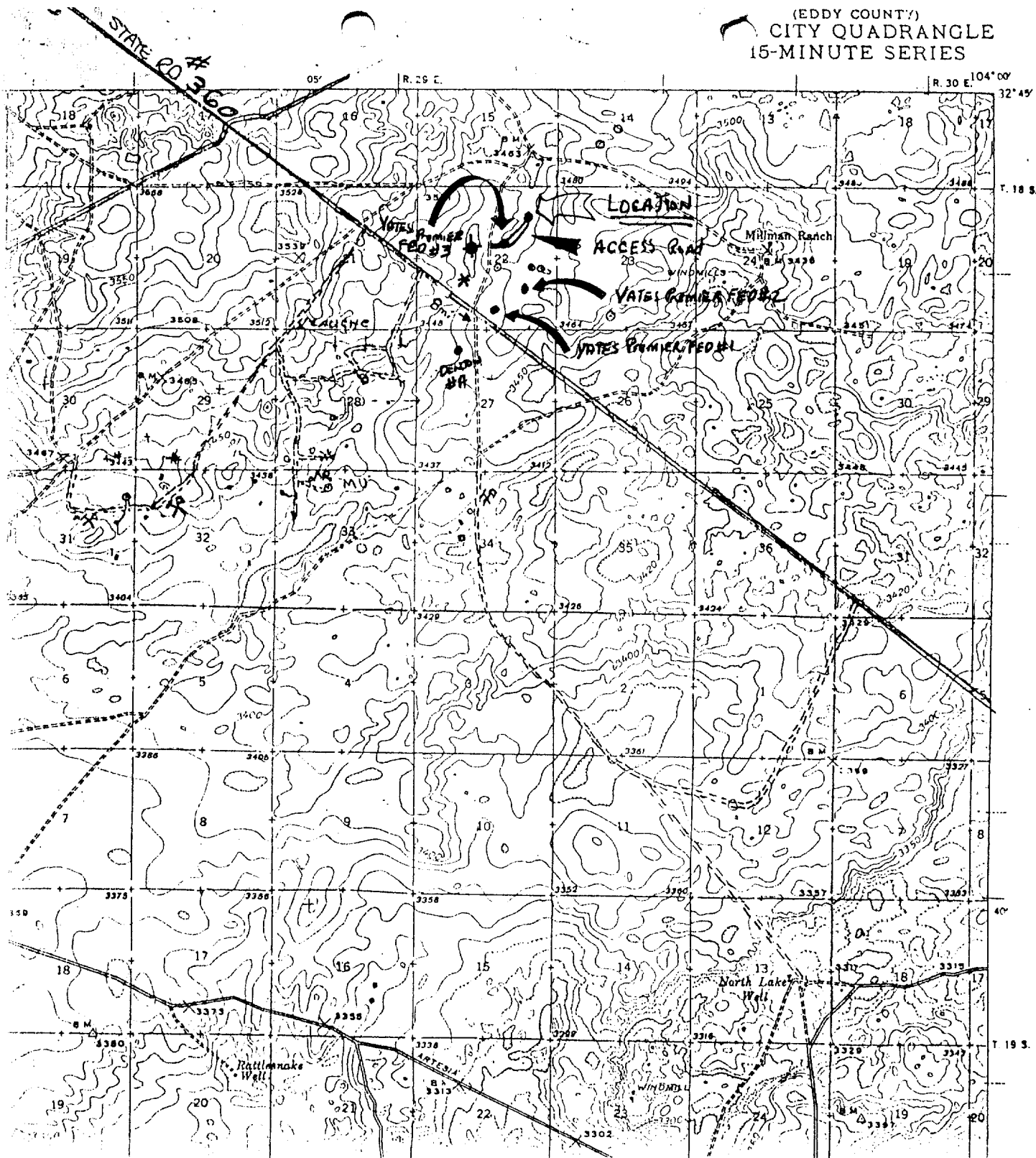
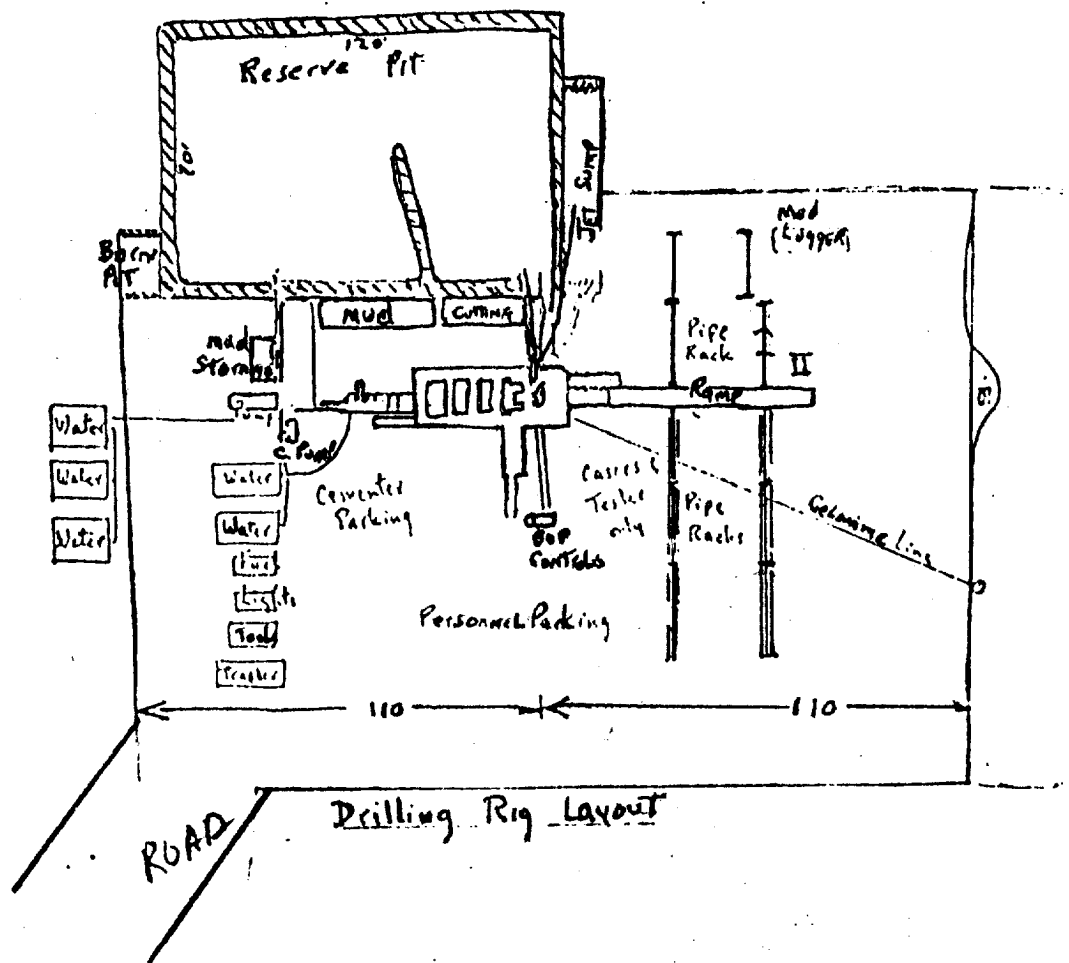


EXHIBIT A
Premier Production Co.
YATES PREMIER FEO #4
990' FNL - 990' FEL
SEC. 22 T 18 S R 29 E
Eddy County, New Mexico

EXHIBIT C



Drilling Rig Layout

