

AMENDED

NO. OF COPIES RECEIVED	
DISTRIBUTION	
SANTA FE	<input checked="" type="checkbox"/>
FILE	<input checked="" type="checkbox"/>
U.S.G.S.	<input checked="" type="checkbox"/>
LAND OFFICE	<input checked="" type="checkbox"/>
OPERATOR	<input checked="" type="checkbox"/>

NEW MEXICO OIL CONSERVATION COMMISSION

RECEIVED BY

OCT 17 1983

O. C. D.

ARTESIA, OFFICE

30-015-24461  
Form C-101  
Revised 1-1-65

5A. Indicate Type of Lease	
STATE <input type="checkbox"/>	FEE <input checked="" type="checkbox"/>
5. State Oil & Gas Lease No.	

**APPLICATION FOR PERMIT TO DRILL, DEEPEN, OR PLUG BACK**

1a. Type of Work		7. Unit Agreement Name	
b. Type of Well DRILL <input checked="" type="checkbox"/> DEEPEN <input type="checkbox"/> PLUG BACK <input type="checkbox"/> OIL WELL <input checked="" type="checkbox"/> GAS WELL <input type="checkbox"/> OTHER <input type="checkbox"/> SINGLE ZONE <input checked="" type="checkbox"/> MULTIPLE ZONE <input type="checkbox"/>		8. Farm or Lease Name Atoka San Andres Un	
2. Name of Operator Gulf Oil Corporation		9. Well No. 157	
3. Address of Operator P. O. Box 670, Hobbs, NM 88240		10. Field and Pool, or Wildcat Atoka San Andres	
4. Location of Well UNIT LETTER <u>E</u> LOCATED <u>2278</u> FEET FROM THE <u>North</u> LINE AND <u>488</u> FEET FROM THE <u>West</u> LINE OF SEC. <u>13</u> TWP. <u>18S</u> RGE. <u>26E</u> NMPM		12. County Eddy	
19. Proposed Depth 1800'		19A. Formation San Andres	
20. Rotary or C.T. Rotary		21. Elevations (Show whether DT, RT, etc.) 3301' GL	
21A. Kind & Status Plug. Bond Blanket		21B. Drilling Contractor Unknown	
22. Approx. Date Work will start ASAP			

**PROPOSED CASING AND CEMENT PROGRAM**

SIZE OF HOLE	SIZE OF CASING	WEIGHT PER FOOT	SETTING DEPTH	SACKS OF CEMENT	EST. TOP
12 1/4"	8-5/8"	24#	900'	250	surf-circ
7-7/8"	5 1/2"	15.5#	1800'	to be determined by caliper surv	surf-circ

Mud Program:                      0' - 350'      FW Spud Mud 8.6ppg, 32-36vis

350' - 1800'      FW 8.6-9.5ppg, 30-36vis, 15-20wl, 1600-1800'

See Attached BOP Drawing #2

APPROVAL VALID FOR 180 DAYS  
 PERMIT EXPIRES 4-17-84  
 UNLESS DRILLING UNDERWAY

*Post 10-21-83  
Hamm. Dec.*

IN ABOVE SPACE DESCRIBE PROPOSED PROGRAM: IF PROPOSAL IS TO DEEPEN OR PLUG BACK, GIVE DATA ON PRESENT PRODUCTIVE ZONE AND PROPOSED NEW PRODUCTIVE ZONE. GIVE BLOWOUT PREVENTER PROGRAM, IF ANY.

I hereby certify that the information above is true and complete to the best of my knowledge and belief.

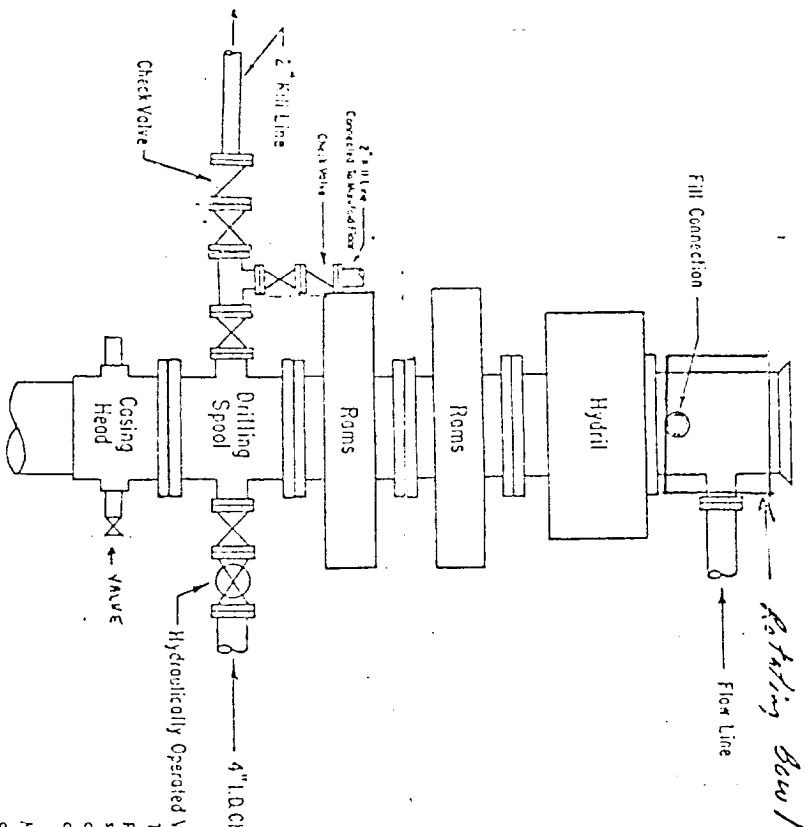
Signed L.C. Anderson Title Area Production Manager Date 10-13-83

(This space for State Use)

APPROVED BY Mike Walker TITLE OIL AND GAS INSPECTOR DATE OCT 18 1983

CONDITIONS OF APPROVAL, IF ANY:

Notify N.M.O.C.C. in sufficient  
 time to witness cementing  
 the 8 5/8" casing



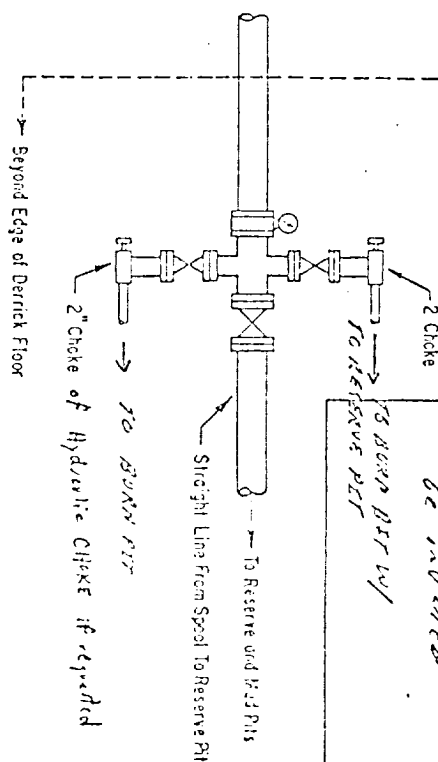
## 2000-3000 PSI WORKING PRESSURE BOP HOOK-UP FOR LARGE CASINGS

### SPECIFY WORKING PRESSURE

labeled, with control handles to indicate open and closed positions. A pressure reducer and regulator must be provided for operating the Hydril preventer. When necessary, a second pressure reducer shall be available to limit operating fluid pressures to ram preventers. Gulf Legion No. 38 hydraulic oil, or equivalent or better, is to be used as the fluid to operate the hydraulic equipment.

The choke manifold, the choke flow line, the relief lines are to be supported by metal stands and adequately anchored. The choke flow line, relief lines and choke lines shall be constructed as straight as possible and without sharp bends. Lay out and secure shall be maintained to the choke manifold. All valves are to be selected for operation in the presence of oil, gas, and drilling fluids. The choke flow line valves and valves of the relief lines connected to the drilling spool and all ram preventers must be equipped with stem extenders, universal joints if needed, and hand wheels which are to extend beyond the edge of the casing structure. All other valves shall be equipped with handles.

**Minimum operating equipment for the preventers and hydraulically operated valves shall be as follows:** (1) multiple pumps, driven by a continuous source of power, capable of fluid charging the total accumulator volume from the nitrogen pre-charge pressure to its rated pressure within 2 minutes. Also, the pumps are to be connected to the hydraulic operating system which is to be a closed system. (2) accumulators with a precharge of nitrogen of not less than 750 PSI and connected so as to receive the aforementioned fluid's charge. With the charging pumps shut down, the pressurized fluid volume stored in the accumulator shall be sufficient to close all the pressure-actuated devices simultaneously within 1/4 second after closure, the remaining accumulator pressure shall be not less than 1000 PSI with the remaining accumulator fluid volume of least 50 percent of the original. When required, either an additional source of power, remote and equivalent, is to be available to operate the above pumps, or there shall be additional pumps operated by separate power and equal in performance capabilities.



### ADDITIONS - DELETIONS - CHANGES SPECIFY

*NOTE: Unless Required means at any time the Gulf Supervisor can, may, or will require the equipment to be installed during operations.*

*Rotating Bowl to be installed*

*To Reserve Port*

*To Reserve and Hold Pits*

*Straight Line from Spool To Reserve Pit*

*To Reserve Pit*

*2\"/>*

AMENDED  
NEW MEXICO OIL CONSERVATION COMMISSION  
WELL LOCATION AND ACREAGE DEDICATION PLAT

Form C-102  
Supersedes C-128  
Effective 1-1-65

All distances must be from the outer boundaries of the Section

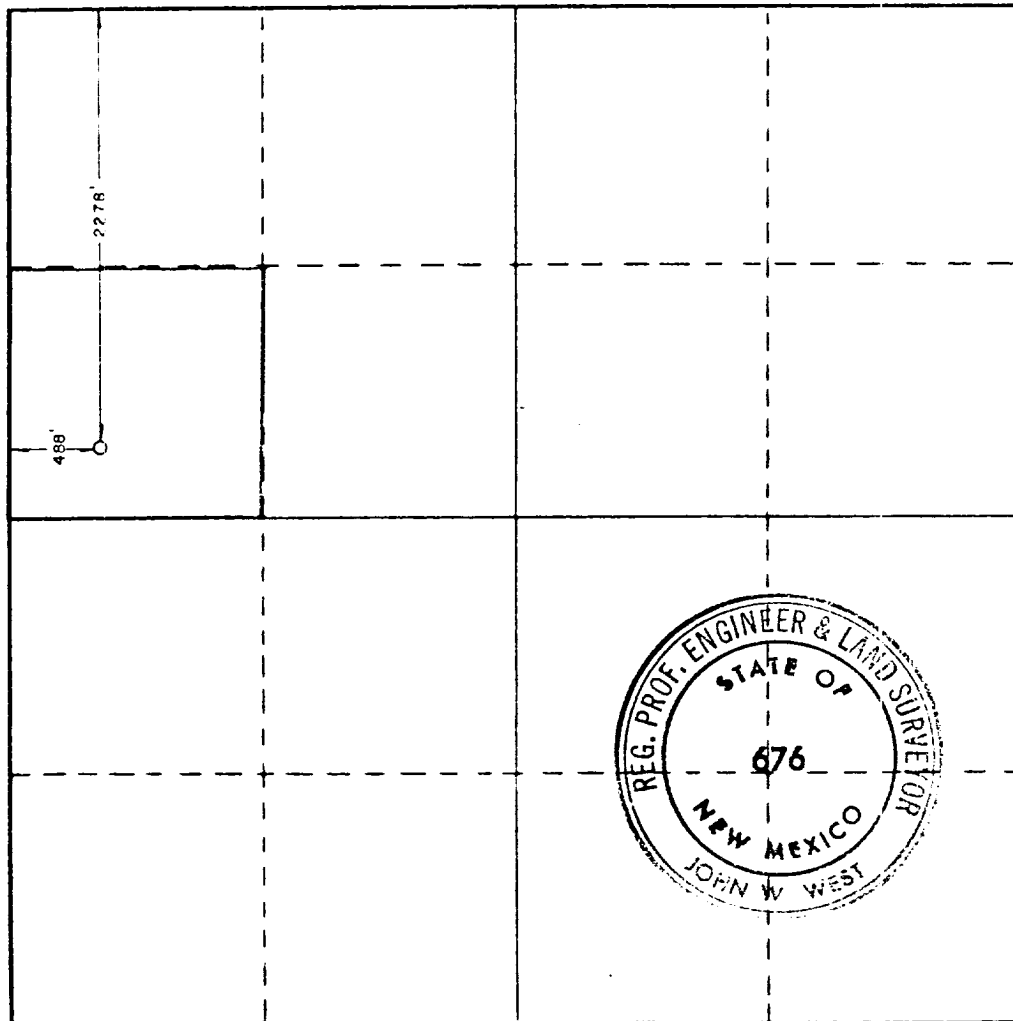
Operator <b>Gulf Oil Corp.</b>			Lease <b>Atoka San Andres Unit</b>		Well No. <b>157</b>
Unit Letter <b>E</b>	Section <b>13</b>	Township <b>18 South</b>	Range <b>26 East</b>	County <b>Eddy</b>	
Actual Footage Location of Well: <b>2278</b> feet from the <b>north</b> line and <b>488</b> feet from the <b>west</b> line					
Ground Level Elev. <b>3300.5'</b>	Producing Formation <b>San Andres</b>		Pool <b>Atoka San Andres</b>		Dedicated Acreage: <b>40</b> Acres

1. Outline the acreage dedicated to the subject well by colored pencil or hachure marks on the plat below.
2. If more than one lease is dedicated to the well, outline each and identify the ownership thereof (both as to working interest and royalty).
3. If more than one lease of different ownership is dedicated to the well, have the interests of all owners been consolidated by communitization, unitization, force-pooling, etc?

☐ Yes ☐ No If answer is "yes," type of consolidation \_\_\_\_\_

If answer is "no," list the owners and tract descriptions which have actually been consolidated. (Use reverse side of this form if necessary.) \_\_\_\_\_

No allowable will be assigned to the well until all interests have been consolidated (by communitization, unitization, forced-pooling, or otherwise) or until a non-standard unit, eliminating such interests, has been approved by the Commission.



CERTIFICATION

I hereby certify that the information contained herein is true and complete to the best of my knowledge and belief.

*R. C. Anderson*

Name

**R. C. Anderson**

Position

**Area Production Mgr**

Company

**Gulf Oil Corporation**

Date

**10-13-83**

I hereby certify that the well location shown on this plat was plotted from field notes of actual surveys made by me or under my supervision, and that the same is true and correct to the best of my knowledge and belief.

Date Surveyed

**April 12, 1983**

Registered Professional Engineer  
and/or Land Surveyor

*John W. West*

Certificate No.

**John W. West, NM R.L.S. 676**

0 330 660 990 1320 1650 1980 2310 2640 2970 3300 3630 3960 4290 4620 4950 5280 5610 5940 6270 6600 6930 7260 7590 7920 8250 8580 8910 9240 9570 9900 0