

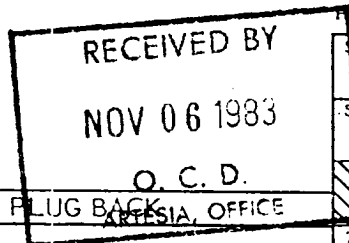
SL-015-24461

Amended

NO. OF COPIES RECEIVED	
DISTRIBUTION	
SANTA FE	✓
FILE	✓
U.S.G.S.	2
LAND OFFICE	✓
OPERATOR	✓

NEW MEXICO OIL CONSERVATION COMMISSION

Form C-101
Revised 1-1-65



3. A. Indicate Type of Lease
STATE ☐ FEE ☒
5. State Oil & Gas Lease No.

APPLICATION FOR PERMIT TO DRILL, DEEPEN, OR PLUG BACK

1a. Type of Work b. Type of Well DRILL <input checked="" type="checkbox"/> DEEPEN <input type="checkbox"/> PLUG BACK <input type="checkbox"/> OIL WELL <input checked="" type="checkbox"/> GAS WELL <input type="checkbox"/> OTHER <input type="checkbox"/> SINGLE ZONE <input type="checkbox"/> MULTIPLE ZONE <input type="checkbox"/>		7. Unit Agreement Name
2. Name of Operator Gulf Oil Corp. ✓		8. Farm or Lease Name Atoka San Andres Tri
3. Address of Operator P.O. Box 670, Hobbs, NM 88240		9. Well No. 157
4. Location of Well UNIT LETTER E LOCATED 2263 FEET FROM THE North LINE AND 488 FEET FROM THE West LINE OF SEC. 13 TWP. 18S RGE. 26E NMPM		10. Field and Pool, or Wildcat Atoka San Andres
19. Proposed Depth 1800'		19A. Formation San Andres
20. Rotary or C.T. Rotary		21. Elevations (Show whether DF, RT, etc.) 3301' GL
21A. Kind & Status Plug. Bond Blanket		21B. Drilling Contractor Unknown
22. Approx. Date Work will start ASAP		12. County Eddy

PROPOSED CASING AND CEMENT PROGRAM

SIZE OF HOLE	SIZE OF CASING	WEIGHT PER FOOT	SETTING DEPTH	SACKS OF CEMENT	EST. TOP
12 1/4"	8 3/8"	24#	900'	250	Surf-Circ
7 7/8"	5 1/2"	15.5#	1800'	to be determ by Caliper surr	Surf-Circ

Mud Program: 0'-350' FW Spud Mud 8.6 ppg, 32-36 vis
350'-1800' FW 8.6-9.5 ppg, 30-36 vis, 15-20 wl, 1600'-1800

Posted PD-1
8 1/2" Back
11-11-83

APPROVAL VALID FOR 180 DAYS
PERMIT EXPIRES 5-8-84
UNLESS DRILLING UNDERWAY

BOP Dwg #2

IN ABOVE SPACE DESCRIBE PROPOSED PROGRAM: IF PROPOSAL IS TO DEEPEN OR PLUG BACK, GIVE DATA ON PRESENT PRODUCTIVE ZONE AND PROPOSED NEW PRODUCTIVE ZONE. GIVE BLOWOUT PREVENTER PROGRAM, IF ANY.

I hereby certify that the information above is true and complete to the best of my knowledge and belief.

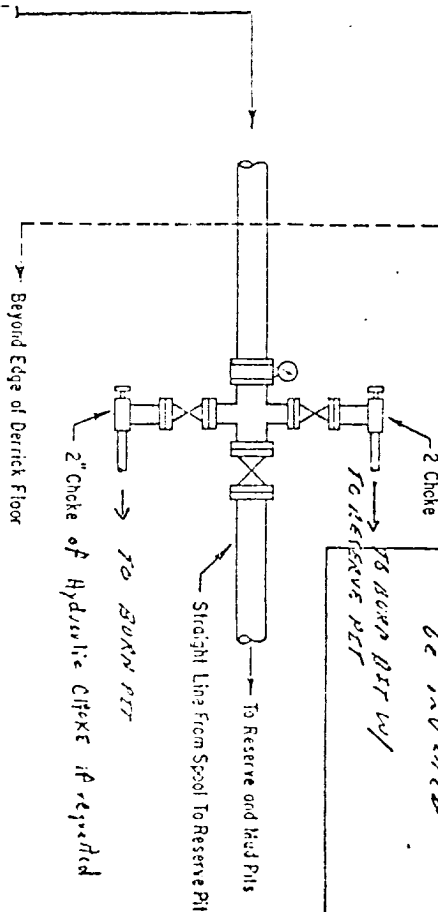
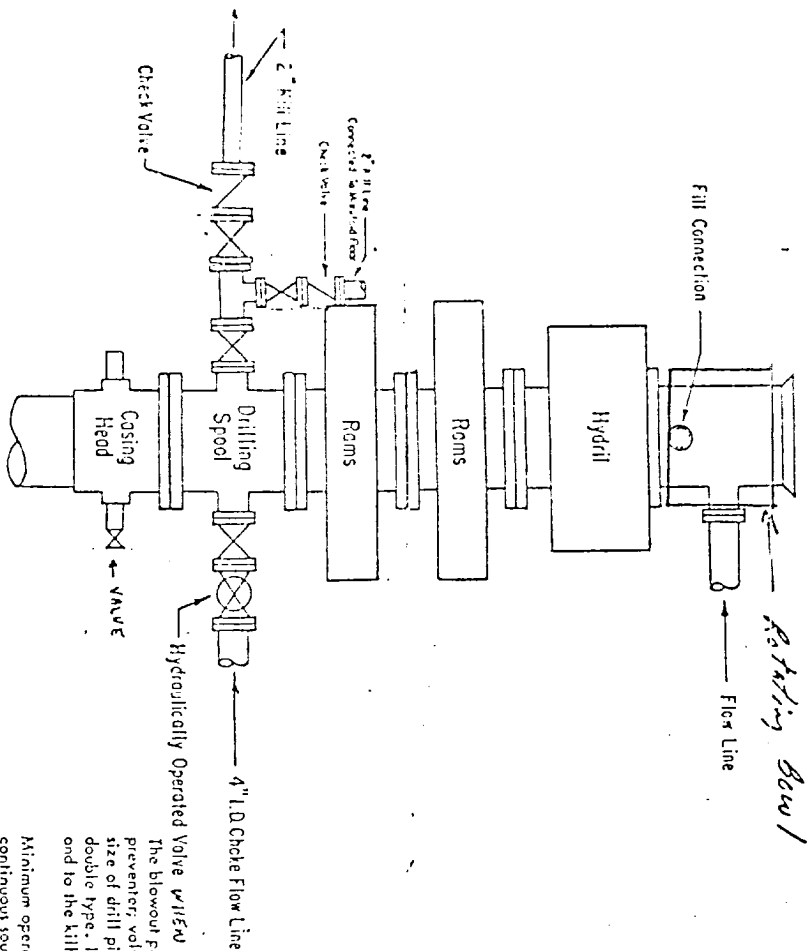
Signed R.C. O'Connor Title AREA PROD MANAGER Date 11-4-83

(This space for State Use)

APPROVED BY Mike Walker TITLE OIL AND GAS INSPECTOR DATE NOV 08 1983

CONDITIONS OF APPROVAL, IF ANY:

Notify N.M.O.C.C. in sufficient
time to witness cementing
the 8 3/8" casing



ADDITIONS - DELETIONS - CHANGES
SPECIFY

NOTE: "Unless Required" means at any time the Gulf Supervisor can, may, or will require the equipment to be installed during operations.

Rotating Bowl to be indicated

To Reserve and Head Pits

To Reserve PIT

2\"/>

THE BLOWOUT PREVENTER ASSEMBLY SHALL BE REQUIRED

The blowout preventer assembly shall consist of one blind ram preventer and one pipe ram preventer, both hydraulically operated; a hydril preventer; valves, checkers and connections, as illustrated. If a tapered drill string is used, a ram preventer shall be provided for each size of drill pipe. Casing and tubing rams to fit the preventers are to be available as needed. The ram preventers may be two singles or a double type. If correct in size, the flanged outlets of the ram preventer may be used for connecting to the 4-inch I.D. choke flow line and to the kill line. The substructure height shall be sufficient to install a rotating blowout preventer.

Minimum operating equipment for the preventers and hydraulically operated valves shall be as follows: (1) multiple pumps, driven by a continuous source of power, capable of fluid changing the total accumulator volume from the nitrogen precharge pressure to its rated pressure within 2 minutes. Also, the pumps are to be connected to the hydraulic operating system which is to be a closed system. (2) accumulators with a precharge of nitrogen of not less than 750 PSI and connected so as to receive the aforementioned fluid charge. With the charging pumps shut down, the pressurized fluid volume stored in the accumulator shall be sufficient to close all the pressure-operated devices simultaneously within 7 seconds after closure, the remaining accumulator pressure shall be not less than 1000 PSI with the remaining accumulator fluid volume at least 50 percent of the original. When required, either an additional source of power, remote and equivalent, is to be available to operate the above pumps, or there shall be additional pumps operated by separate power and equal in performance capabilities.

**2000 - 3000 PSI WORKING PRESSURE
BOP HOOK-UP FOR LARGE CASINGS**

SPECIFY WORKING PRESSURE

The closing manifold and remote closing manifold shall have a separate control for each pressure-operated device. Controls are to be labeled, with control handles to indicate open and closed positions. A pressure reducer and regulator must be provided for operating the hydril preventer. When required, a second pressure reducer shall be available to limit operating fluid pressures to ram preventers. Gulf Legion No. 38 hydraulic oil, an equivalent or better, is to be used as the fluid to operate the hydraulic equipment.

The choke manifold, the choke flow line, the choke lines and the relief lines are to be supported by metal stands and adequately anchored. The choke flow line, relief lines and choke lines shall be constructed as straight as possible and without sharp bends. Easy or a safe access shall be maintained to the choke manifold. All valves are to be selected for operation in the presence of oil, gas, and drilling fluids. The choke flow line valves and valves of the relief lines connected to the drilling spoils and all ram type preventers must be equipped with stem extensions, universal joints if needed, and hand wheels which are to extend beyond the edge of the derrick substructure. All other valves shall be equipped with handles.

MEXICO OIL CONSERVATION COMMISSION
WELL LOCATION AND ACREAGE DEDICATION PLAT

Form C-102
Supersedes C-128
Effective 1-1-65

All distances must be from the outer boundaries of the Section

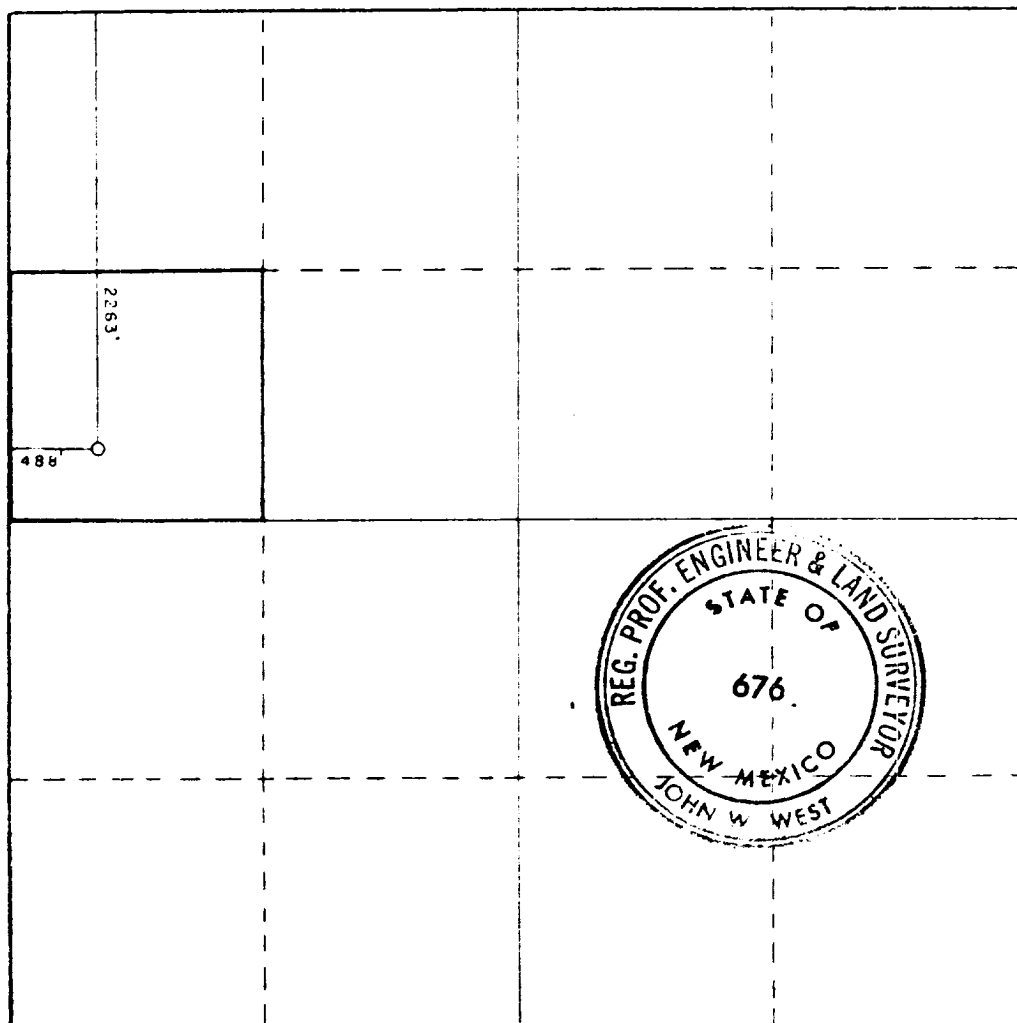
Operator GULF OIL CORP.			Lease ATOKA SAN ANDRES UNIT		Well No. 157
Grid Letter E	Section 13	Township 18S	Range 26E	County EDDY	
Actual Fact Location of Well: 2263 feet from the NORTH line and 488 feet from the WEST line					
Ground Level Elev. 3300.5	Producing Formation <i>San Andres</i>		Foot <i>Atoka San Andres</i>		Leased Acreage 40 Acres

1. Outline the acreage dedicated to the subject well by colored pencil or hatchure marks on the plat below.
2. If more than one lease is dedicated to the well, outline each and identify the ownership thereof (both as to working interest and royalty).
3. If more than one lease of different ownership is dedicated to the well, have the interests of all owners been consolidated by communitization, unitization, force-pooling, etc?

☐ Yes ☐ No If answer is "yes," type of consolidation _____

If answer is "no," list the owners and tract descriptions which have actually been consolidated. (Use reverse side of this form if necessary.) _____

No allowable will be assigned to the well until all interests have been consolidated (by communitization, unitization, forced-pooling, or otherwise) or until a non-standard unit, eliminating such interests, has been approved by the Commission.



CERTIFICATION

I hereby certify that the information contained herein is true and complete to the best of my knowledge and belief.

R.C. Anderson

Name **R.C. ANDERSON**
Position **AREA PROD MANAGER**
Company **GULF OIL CORP**

Date **11-4-83**

I hereby certify that the well location shown on this plat was plotted from field notes of actual surveys made by me or under my supervision, and that the same is true and correct to the best of my knowledge and belief.

Date Surveyed **11/2/83**

Registered Professional Engineer and Land Surveyor

John W. West

Certificate No **JOHN W. WEST, 676**
RONALD J. EIDSON, 3239

