

GEOLOGICAL SURVEY

APPLICATION FOR PERMIT TO DRILL, DEEPEN, OR PLUG BACK

1a. TYPE OF WORK

DRILL ☒

DEEPEN ☐

PLUG BACK ☐

b. TYPE OF WELL

OIL
WELL ☒

GAS
WELL ☐

OTHER ☐

SINGLE
ZONE ☐

MULTIPLE
ZONE ☐

MAY 20 1983

2. NAME OF OPERATOR

Forister & Sweatt

O. C. D.

ARTESIA, OFFICE

3. ADDRESS OF OPERATOR

PO Box 161, Artesia, NM 88210

4. LOCATION OF WELL (Report location clearly and in accordance with any State requirements.)*

At surface

2310 FEL 660 FSL

At proposed prod. zone

14. DISTANCE IN MILES AND DIRECTION FROM NEAREST TOWN OR POST OFFICE*

8 miles northwest of Loco Hills

ROSWELL, NEW MEXICO

15. DISTANCE FROM PROPOSED*

LOCATION TO NEAREST
PROPERTY OR LEASE LINE, FT.
(Also to nearest drlg. unit line, if any)

16. NO. OF ACRES IN LEASE

680

17. NO. OF ACRES ASSIGNED
TO THIS WELL

40

18. DISTANCE FROM PROPOSED LOCATION*

TO NEAREST WELL, DRILLING, COMPLETED,
OR APPLIED FOR, ON THIS LEASE, FT.

19. PROPOSED DEPTH

2700

20. ROTARY OR CABLE TOOLS

Rotary

21. ELEVATIONS (Show whether DF, RT, GR, etc.)

3649.4 GR

22. APPROX. DATE WORK WILL START*

5-20-83

23. PROPOSED CASING AND CEMENTING PROGRAM

SIZE OF HOLE	SIZE OF CASING	WEIGHT PER FOOT	SETTING DEPTH	QUANTITY OF CEMENT
12 1/2	8 5/8	23#	340	175 sx Circulate
7 7/8	4 1/2	9.5#	2700	800 sx

1. We propose to drill and test the Queen, Grayburg, and San Andres formations. Approximately 340' of 8 5/8" surface casing will be set. 4 1/2" 9.5# production casing.

B.O.P. Program - shaffer type hydraulic B.O.P. will be installed on surface casing.

Mud Program - Fresh water til surface casing set. Brine water 350' to T.D. Mud up to run logs and casing.

Post ID-2
5-27-83
APF & New Loc.

IN ABOVE SPACE DESCRIBE PROPOSED PROGRAM: If proposal is to deepen or plug back, give data on present productive zone and proposed new productive zone. If proposal is to drill or deepen directionally, give pertinent data on subsurface locations and measured and true vertical depths. Give blowout preventer program, if any.

24.

SIGNED

TITLE

Partner

DATE

4-21-83

(This space for Federal or State office use)

PERMIT NO.

APPROVAL DATE

APPROVED BY

TITLE

Acting Asst. District
Manager for Minerals

DATE

5/17/83

CONDITIONS OF APPROVAL, IF ANY

NEW MEXICO OIL CONSERVATION COMMISSION
WELL LOCATION AND ACREAGE DEDICATION PLAT

Form C-102
Supersedes C-128
Effective 1-1-65

All distances must be from the outer boundaries of the Section.

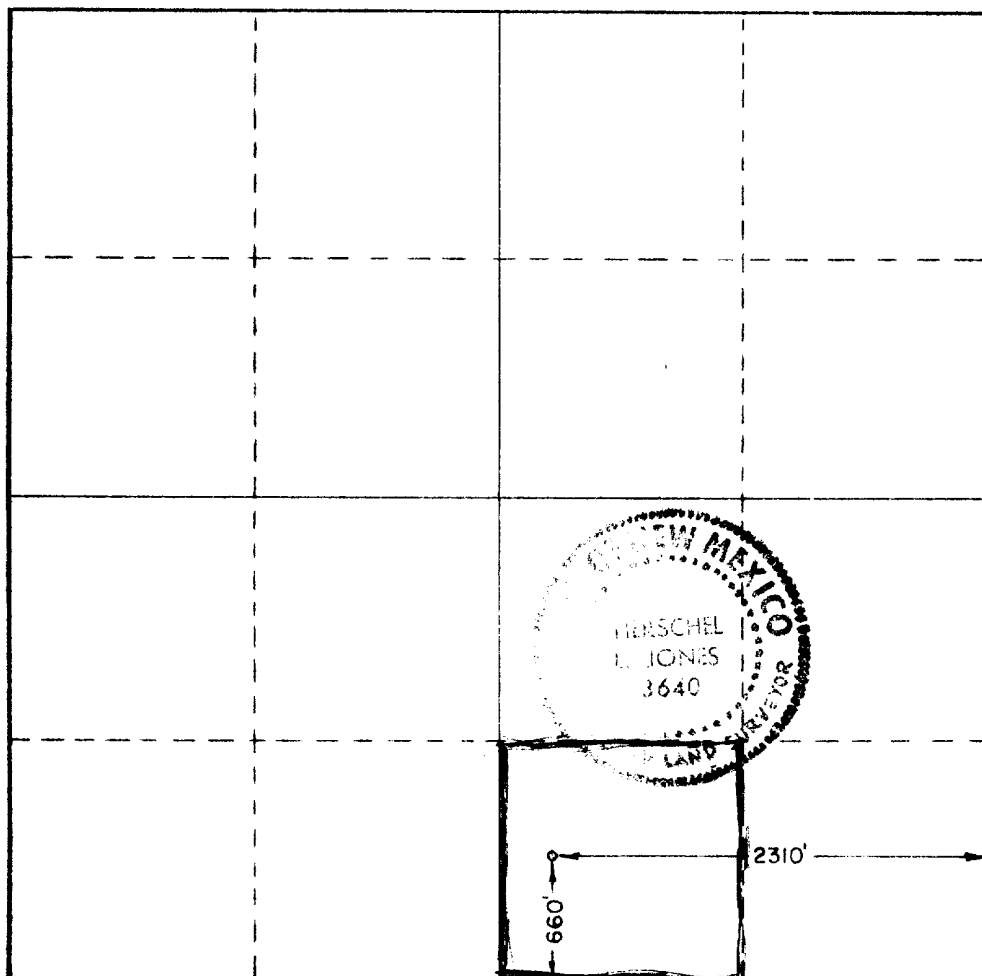
Operator FORISTER & SWEATT		Lease BEAR DRAW		Well No. 5
Unit Letter 0	Section 21	Township 16 South	Range 29 East	County Eddy
Actual Footage Location of Well: 2310 feet from the East line and 660 feet from the South line				
Ground Level Elev. 3649.4	Producing Formation G. G. H.	Pool Bear Draw G. G. S. H.	Dedicated Acreage: 1.0 Acres	

1. Outline the acreage dedicated to the subject well by colored pencil or hachure marks on the plat below.
2. If more than one lease is dedicated to the well, outline each and identify the ownership thereof (both as to working interest and royalty).
3. If more than one lease of different ownership is dedicated to the well, have the interests of all owners been consolidated by communitization, unitization, force-pooling, etc?

☐ Yes ☐ No If answer is "yes," type of consolidation _____

If answer is "no," list the owners and tract descriptions which have actually been consolidated. (Use reverse side of this form if necessary.) _____

No allowable will be assigned to the well until all interests have been consolidated (by communitization, unitization, forced-pooling, or otherwise) or until a non-standard unit, eliminating such interests, has been approved by the Commission.



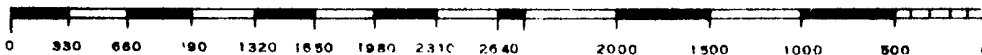
CERTIFICATION

I hereby certify that the information contained herein is true and complete to the best of my knowledge and belief.

Name *Clarence Jones*
Position *Partner*
Company *Forister & Sweatt*
Date *4-21-83*

I hereby certify that the well location shown on this plat was plotted from field notes of actual surveys made by me or under my supervision, and that the same is true and correct to the best of my knowledge and belief.

Date Surveyed *4/8/83*
Registered Professional Engineer and/or Land Surveyor
Herschel L. Jones
Certificate No. *3640*



Forister & Sweatt
P.O. Box 161
Artesia, N.M. 88210

APPLICATION FOR DRILLING

Forister & Sweatt
Bear Draw #5
Sec 21 T16S R29E
2310 FEL 660 FSL
Eddy County, New Mexico
Lease: NM 15007

In conjunction with Form 9-331C, Application for Permit to Drill Subject well, Forister & Sweatt submits the following items of pertinent information in accordance with Minerals Management Service requirements.

1. The geologic surface formation is Sandy Alluvium.
2. The estimated tops of geologic markers are as follows:

Seven Rivers	1060'
Penrose	1930'
Metex	2290'
Premier	2400'
Lovington	2530'
San Andres	2650'

3. The estimated depths at which anticipated water, oil, or gas formations are expected to be encountered:

Water: Approx. 200'
Oil or Gas: Penrose 1920', Metex 2280',
Premier 2420', Lovington 2540'

4. Proposed Casing Program: See Form 9-331C.
5. Pressure Control Equipment: See Form 9-331C.
6. Mud Program: See Form 9-331C.
7. Auxillary Equipment: Blowout Preventor. Exhibit E.
8. Testing, Logging and Coring Program:
Logging: Gamma-Neutron log before casing is set.
9. No abnormal pressures are anticipated.
10. Anticipated starting date: May 20, 1983
Anticipated completion date: June 20, 1983

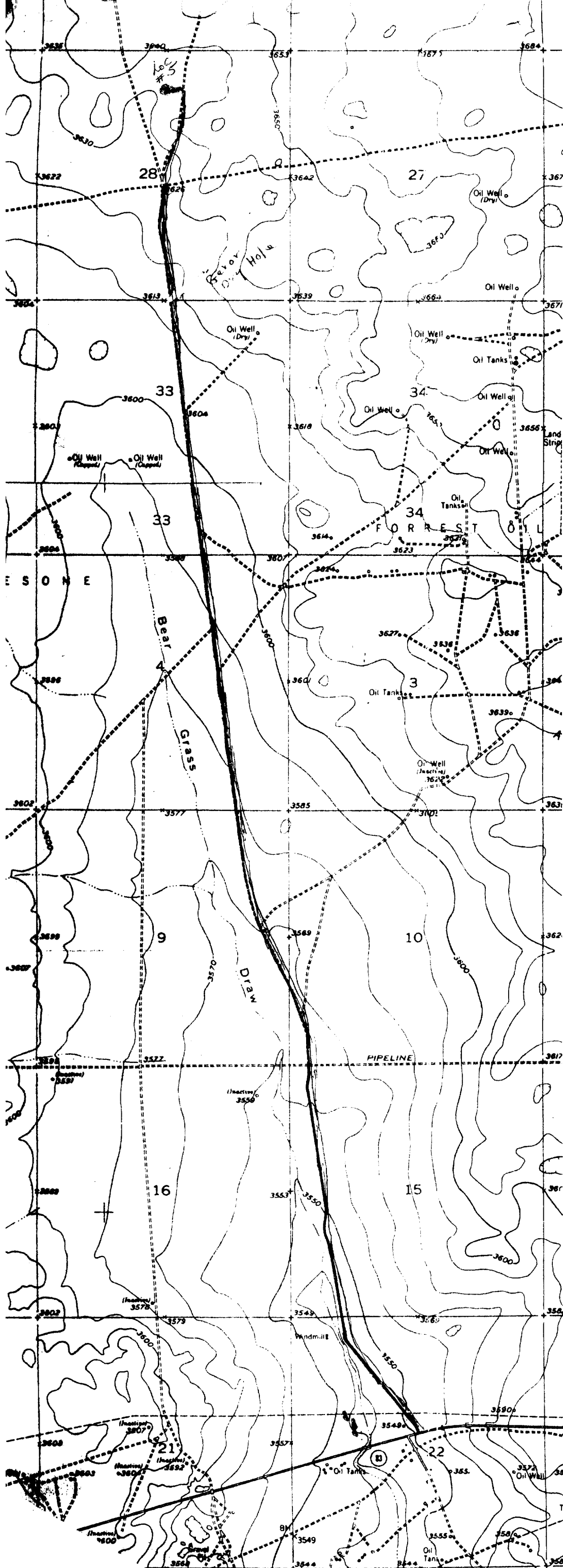


Exhibit "A"

- Existing Roads
- New Road