

UNITED STATES  
DEPARTMENT OF THE INTERIOR  
GEOLOGICAL SURVEY

## APPLICATION FOR PERMIT TO DRILL, DEEPEN, OR PLUG BACK

## 1a. TYPE OF WORK

DRILL ☒DEEPEN ☐

RECEIVED

PLUG BACK ☐

## b. TYPE OF WELL

OIL  
WELL ☒GAS  
WELL ☐

OTHER

SINGLE  
WELL ☐MULTIPLE  
ZONE ☐

## 2. NAME OF OPERATOR

Martin Yates III ✓

## 3. ADDRESS OF OPERATOR

207 S. 4th, Artesia, New Mexico 88210

## 4. LOCATION OF WELL (Report location clearly and in accordance with any State requirements.)\*

At surface

660' FSL and 660' FEL

At proposed prod. zone

same

## 14. DISTANCE IN MILES AND DIRECTION FROM NEAREST TOWN OR POST OFFICE\*

Approximately 30 miles SE of Artesia, New Mexico.

## 15. DISTANCE FROM PROPOSED\*

LOCATION TO NEAREST

PROPERTY OR LEASE LINE, FT.

(Also to nearest drlg. unit line, if any)

330'

## 18. DISTANCE FROM PROPOSED LOCATION\*

TO NEAREST WELL, DRILLING, COMPLETED,

OR APPLIED FOR, ON THIS LEASE, FT.

1200'

## 16. NO. OF ACRES IN LEASE

660

## 19. PROPOSED DEPTH

3500'

17. NO. OF ACRES ASSIGNED  
TO THIS WELL

40

## 20. ROTARY OR CABLE TOOLS

Rotary

## 21. ELEVATIONS (Show whether DF, RT, GR, etc.)

3479.5' GL

## 22. APPROX. DATE WORK WILL START\*

ASAP

## 23. PROPOSED CASING AND CEMENTING PROGRAM

SIZE OF HOLE	SIZE OF CASING	WEIGHT PER FOOT	SETTING DEPTH	QUANTITY OF CEMENT
12 1/4"	8 5/8"	24# J-55	350'	350 sx circulated
7 7/8"	4 1/2"	9.5# J-55	3500'	1500 sx circulated

Plan to test the San Andres formation.

Mud Program: FW gel to 480', cut brine, gel and possible KCL to TD.Bop Program: BOP's will be installed at the offset and tested daily.

IN ABOVE SPACE DESCRIBE PROPOSED PROGRAM: If proposal is to deepen or plug back, give data on present productive zone and proposed new productive zone. If proposal is to drill or deepen directionally, give pertinent data on subsurface locations and measured and true vertical depths. Give blowout preventer program, if any.

24.

SIGNED

Cy Cowan

TITLE Regulatory Agent

DATE 6/29/83

(This space for Federal or State office use)

PERMIT NO.

APPROVAL DATE

APPROVED BY

James A. Sullivan

TITLE

ADM, MINERALS

DATE

July 7, 1983

CONDITIONS OF APPROVAL, IF ANY:

APPROVAL SUBJECT TO  
GENERAL REQUIREMENTS AND  
SPECIAL STIPULATIONS  
ATTACHEDRECEIVED  
JUL 1 10 33 AM '83  
BUR. OF LAND MGMT  
ROSSELL DISTRICT

**NEW MEXICO OIL CONSERVATION COMMISSION  
WELL LOCATION AND ACREAGE DEDICATION PLAT**

Form C-102  
Supersedes C-128  
Effective 1-1-65

All distances must be from the outer boundaries of the Section.

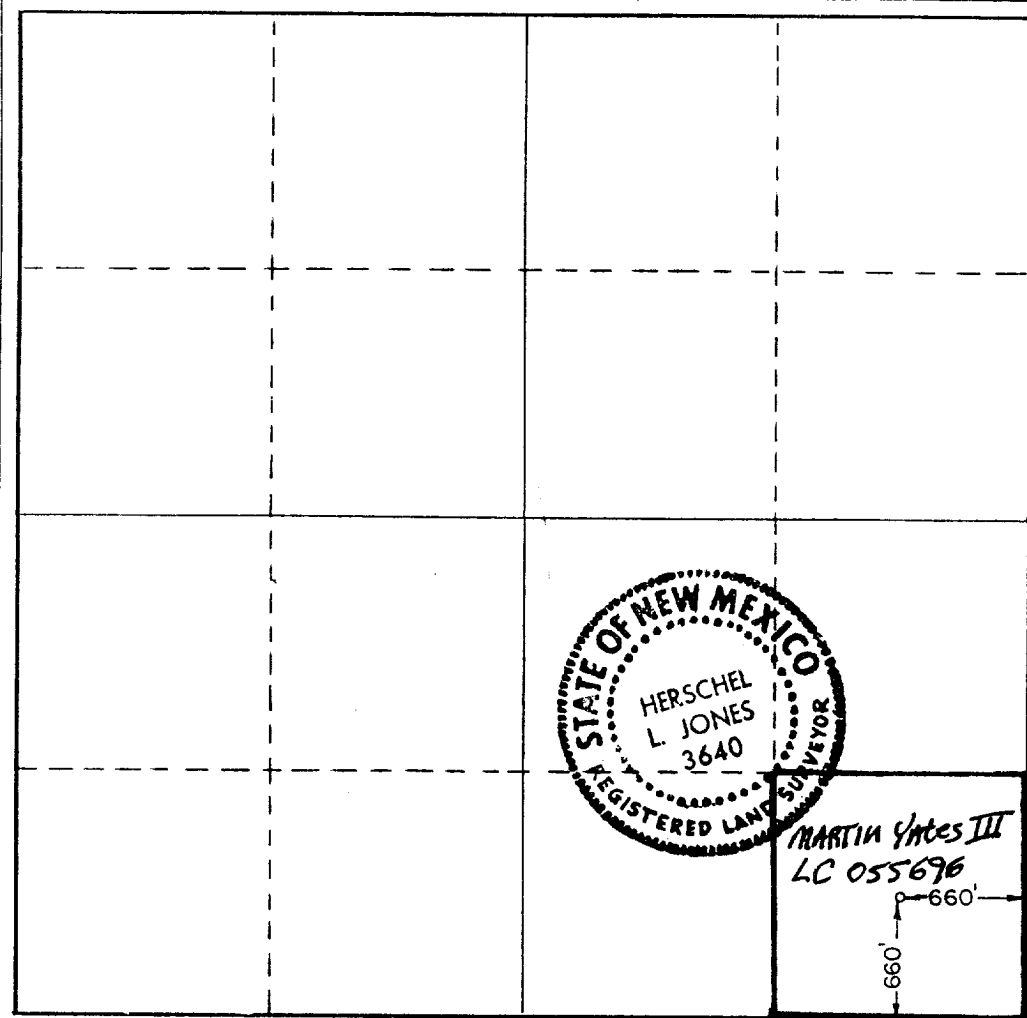
Operator <b>MARTIN YATES III</b>			Lease <b>BOULTER FEDERAL</b>		Well No. <b>5</b>
Unit Letter <b>P</b>	Section <b>22</b>	Township <b>18 South</b>	Range <b>29 East</b>	County <b>Eddy County</b>	
Actual Footage Location of Well: <div style="display: flex; justify-content: space-between;"> <span>660 feet from the <b>South</b> line and</span> <span>660 feet from the <b>East</b> line</span> </div>					
Ground Level Elev. <b>3479.5</b>	Producing Formation <b>San Andres</b>	Pool Name <b>Looco Hills Grayburg SA</b>	Dedicated Acreage: <b>40</b> Acres		

1. Outline the acreage dedicated to the subject well by colored pencil or hachure marks on the plat below.
2. If more than one lease is dedicated to the well, outline each and identify the ownership thereof (both as to working interest and royalty).
3. If more than one lease of different ownership is dedicated to the well, have the interests of all owners been consolidated by communitization, unitization, force-pooling, etc?

☐ Yes ☒ No If answer is "yes," type of consolidation \_\_\_\_\_

If answer is "no," list the owners and tract descriptions which have actually been consolidated. (Use reverse side of this form if necessary.) \_\_\_\_\_

No allowable will be assigned to the well until all interests have been consolidated (by communitization, unitization, forced-pooling, or otherwise) or until a non-standard unit, eliminating such interests, has been approved by the Commission.



**CERTIFICATION**

I hereby certify that the information contained herein is true and complete to the best of my knowledge and belief.

*Cy Cowan*

Name  
**Cy Cowan**  
Position  
**Regulatory Agent**  
Company  
**Yates Petroleum Corp.**

Date  
**6/28/83**

I hereby certify that the well location shown on this plat was plotted from field notes of actual surveys made by me or under my supervision, and that the same is true and correct to the best of my knowledge and belief.

Date Surveyed  
**6/23/83**

Registered Professional Engineer and/or Land Surveyor

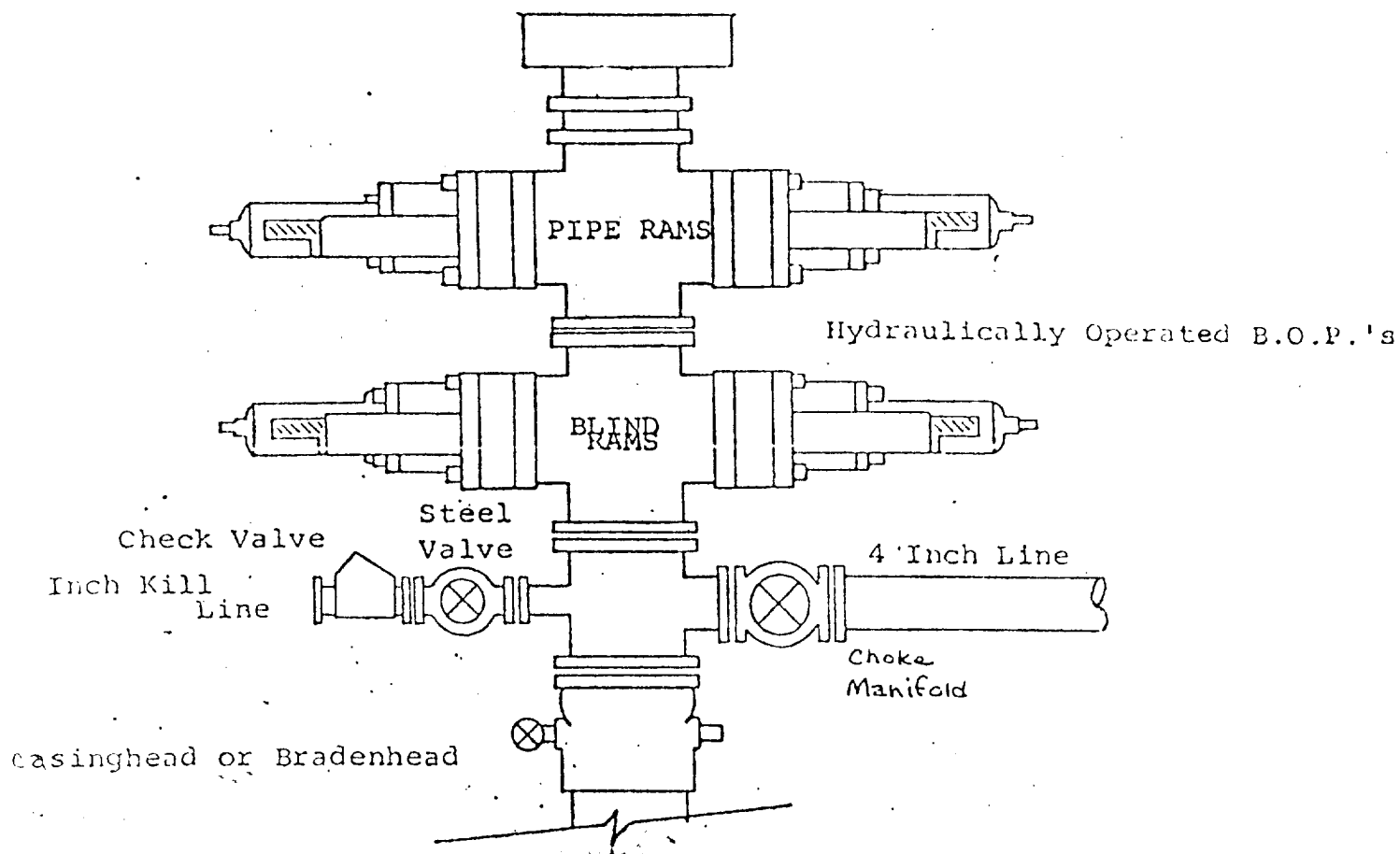
*Herschel L. Jones*

Certificate No.  
**3640**

0 330 660 990 1320 1650 1980 2310 2640 2970 3300 3630 3960 4290 4620 4950 5280 5610 5940 6270 6600

EXHIBIT B

BOP DIAGRAM



MARTIN YATES III  
Boulter Federal #5  
660' FSL and 660' FEL  
Section 22-T18S=R29E

In conjunction with Form 9-331C, Application for Permit to Drill subject well, Yates Petroleum Corporation submits the following ten items of pertinent information in accordance with USGS requirements.

1. The geologic surface formation is sandy loam.
2. The estimated tops of geologic markers are as follows:

Yates	1040'
Queen	2030'
San Andres	2860'
TD	3500'
3. The estimated depths at which anticipated water, oil or gas formations are expected to be encountered:

Water: approximately 150'

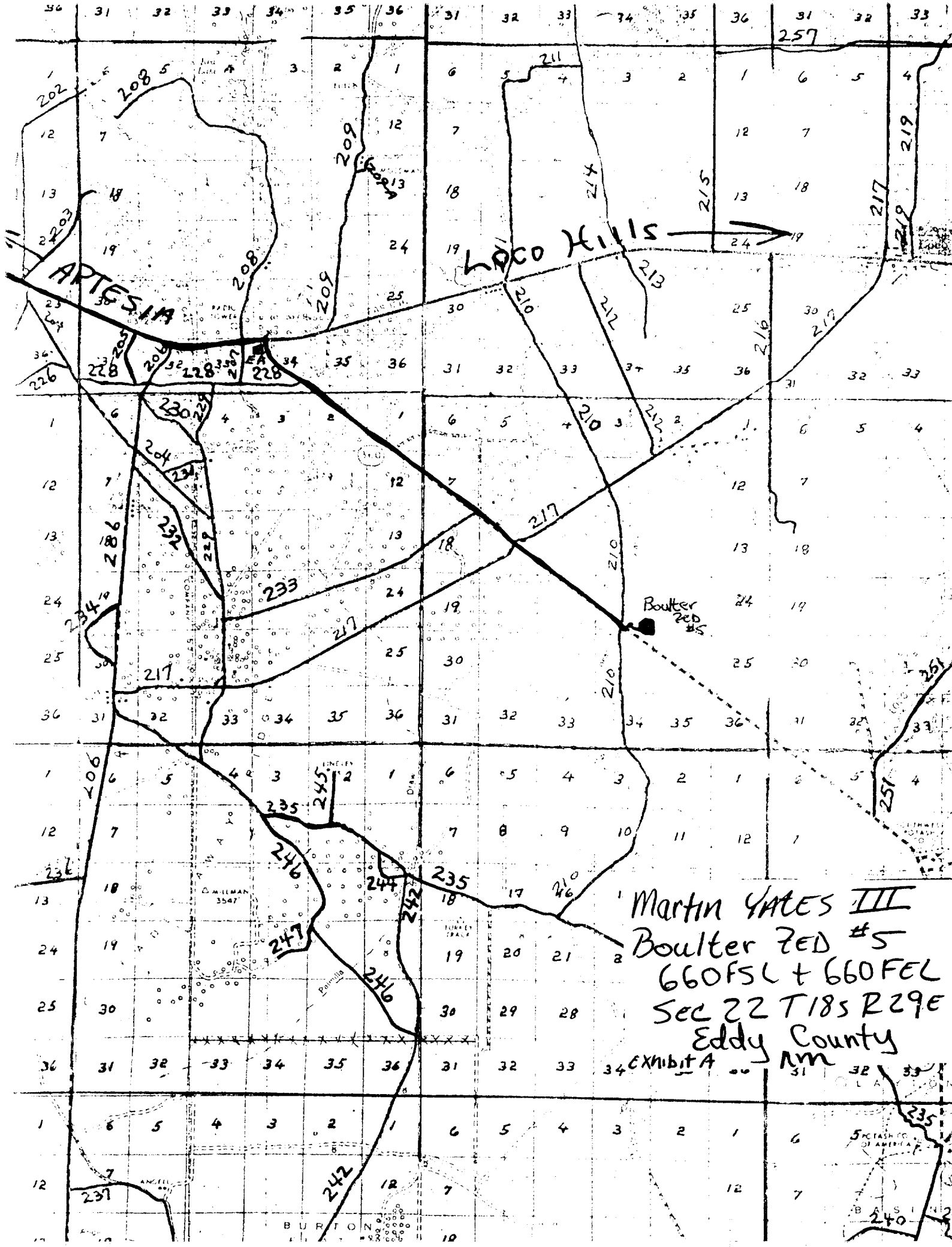
Oil or Gas: 2000'-2850'
4. Proposed Casing Program: See Form 9-331C.
5. Pressure Control Equipment: See Form 9-331C.
6. Mud Program: See Form 9-331C.
7. Auxiliary Equipment: Kelly Cock; pit level indicators and flow sensor equipment; sub with full-opening valve on floor, drill pipe connection.
8. Testing, Logging and Coring Program:

Samples: 10' samples from surface.

DST's: Not likely.

Coring: Not Likely.

Logging: CNL-FDC TD to csg w/CNL-2 to surface, DLL TD to csg w/min Rx0.
9. No abnormal pressures or temperatures are anticipated.
10. Anticipated starting date: As soon as possible after approval.

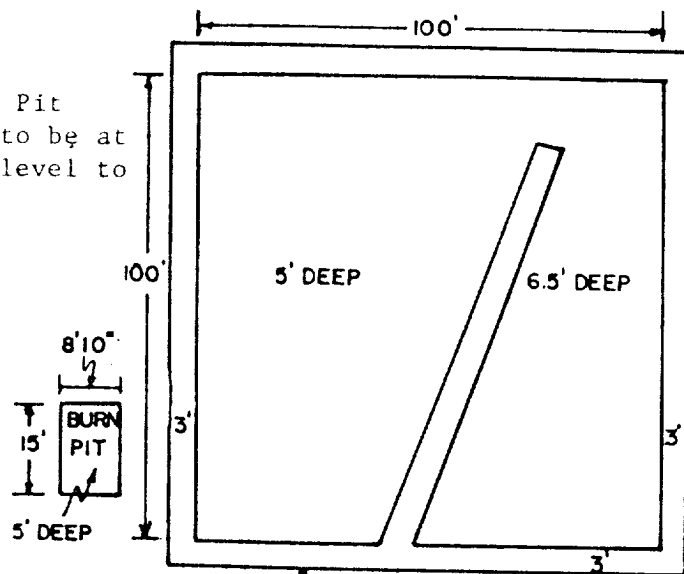


Martin YATES III  
Boulter 2ed #5  
660FSL + 660FEL  
Sec 22 T18S R29E  
Eddy County  
Exhibit A

# YATES PETROLEUM CORP.

## Exhibit C

Reserve Pit  
bottom to be at  
ground level to  
1 ft.



NOTE:

Inside walls must be as  
high and wide as outer  
walls of pit.

