

DISTRIBUTION		
SANT - FE	✓	
FILE	✓	✓
U.S.G.S.	2	
LAND OFFICE	✓	
OPERATOR	✓	

NEW MEXICO OIL CONSERVATION COMMISSION

Form O-101 2-70
Revised 11-69

RECEIVED BY
SEP 01 1983
ARTESIA, CHASE
PLUG BACK

5A. Indicate Type of Lease
STATE ☒ FEDERAL ☐
5. State Oil & Gas Lease No.
647 #350

APPLICATION FOR PERMIT TO DRILL, DEEPEN, OR PLUG BACK

1a. Type of Work DRILL <input checked="" type="checkbox"/> DEEPEN <input type="checkbox"/>		7. Unit Agreement Name	
b. Type of Well OIL WELL <input checked="" type="checkbox"/> GAS WELL <input type="checkbox"/> OTHER <input type="checkbox"/>		8. Farm or Lease Name Illinois	
2. Name of Operator Santa Rita Exploration, Corp. ✓		9. Well No. #1	
3. Address of Operator P.O. Box 798, Artesia, New Mexico 88210		10. Field and Pool, or Wildcat Artesia GR SA	
4. Location of Well UNIT LETTER B LOCATED 990 FEET FROM THE North LINE AND 1700 FEET FROM THE East LINE OF SEC. 19 TWP. 18S RGE. 28E NMPM		17. County Eddy	
19. Proposed Depth 2850'		19A. Formation San Andres	
20. Rotary or C.T. Rotary		21. Elevations (Show whether DF, RT, etc.) 3594.8	
21A. Kind & Status Plug. Bond Statewide		21B. Drilling Contractor Collier Drilling Co.	
22. Approx. Date Work will start Sept. 5, 1983			

23. PROPOSED CASING AND CEMENT PROGRAM

SIZE OF HOLE	SIZE OF CASING	WEIGHT PER FOOT	SETTING DEPTH	SACKS OF CEMENT	EST. TOP
12 1/4 "	8 5/8"	24#	350'	300 sxs	
7 7/8 "	5 1/2"	15.5#	2850'	600 sxs	

Plan to spud Artesia San Andres well on September 5, 1983 with 12 1/4" bit. Set 350' of 8 5/8" surface 24# with 300 sxs. Class "C" neat. Drill out with 7 7/8" bit with 10# brine to proposed depth of 2850'. If commercial shows are present, 5 1/2, 15.5# casing will be set with 600 sxs Class "C" neat and circulate to surface. If dry hole proper plugs will be set as prescribed by NM OCD.

*posted a copy
to the
9-12-83*

APPROVAL VALID FOR 180 DAYS
PERMIT EXPIRES 3-2-84
UNLESS DRILLING UNDERWAY

IN ABOVE SPACE DESCRIBE PROPOSED PROGRAM: IF PROPOSAL IS TO DEEPEN OR PLUG BACK, GIVE DATA ON PRESENT PRODUCTIVE ZONE AND PROPOSED NEW PRODUCTIVE ZONE. GIVE BLOWOUT PREVENTER PROGRAM, IF ANY.

I hereby certify that the information above is true and complete to the best of my knowledge and belief.

Signed Steve Jand Title Production Clerk Date August 24, 1983

(This space for State Use)

APPROVED BY Mike Walker TITLE OIL AND GAS INSPECTOR DATE SEP 02 1983

CONDITIONS OF APPROVAL, IF ANY:

MEXICO OIL CONSERVATION COMMISSION
WELL LOCATION AND ACREAGE DEDICATION PLAT

Form O-102
 Supersedes O-128
 Effective 1-1-65

All distances must be from the outer boundaries of the Section

Operator SANTA RITA EXPLORATION CORP			Lease ILLINOIS		Well No. 1
Section Letter B	Section 19	Township 13 SOUTH	Range 28 EAST	County RODNEY	

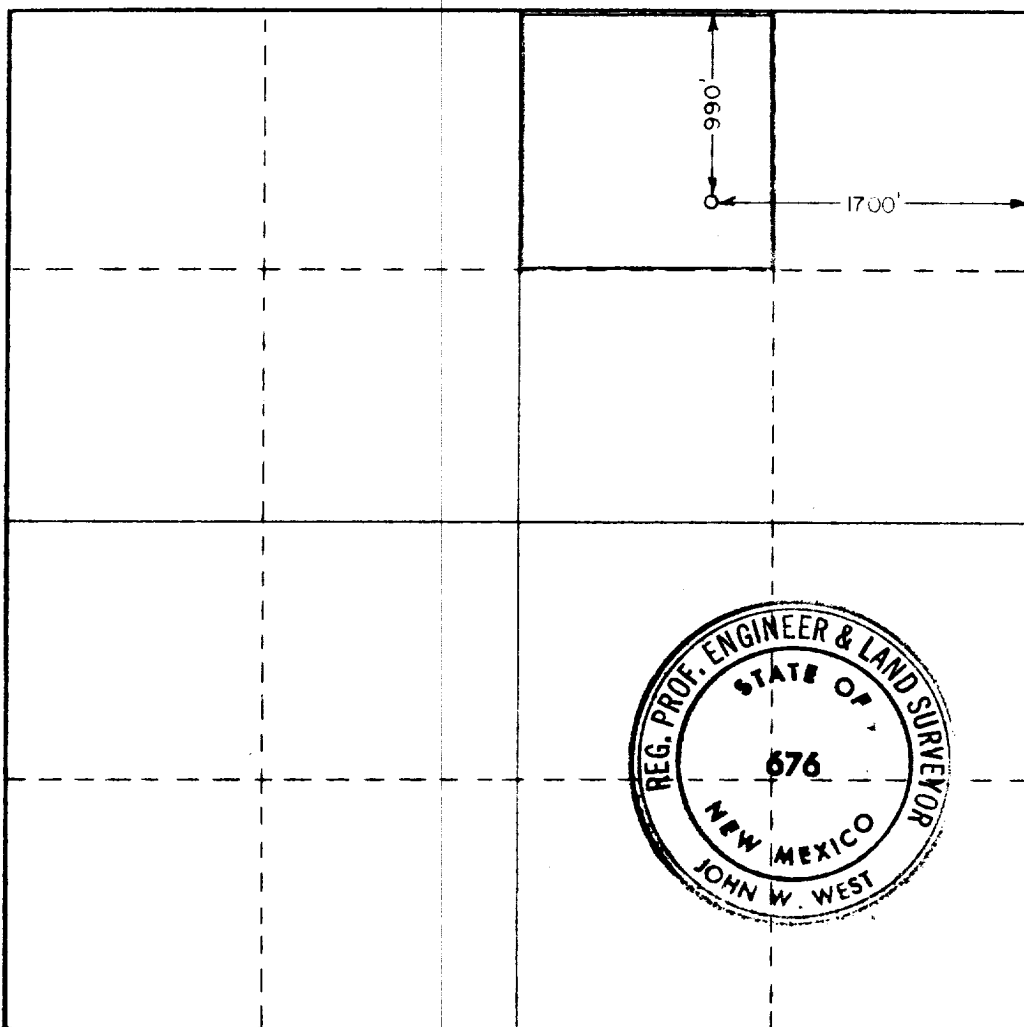
Well Location Location of Well:
 990 feet from the **NORTH** line and 1700 feet from the **EAST** line.
 Ground Level Elev. **3544.8** Producing Formation **Queen GR SA** Pool **Artesia Queen GR SA** Estimated Acreage **40** Acres

- Outline the acreage dedicated to the subject well by colored pencil or hatchure marks on the plat below.
- If more than one lease is dedicated to the well, outline each and identify the ownership thereof (both as to working interest and royalty).
- If more than one lease of different ownership is dedicated to the well, have the interests of all owners been consolidated by communitization, unitization, force-pooling, etc?

☐ Yes ☐ No If answer is "yes," type of consolidation _____

If answer is "no," list the owners and tract descriptions which have actually been consolidated. (Use reverse side of this form if necessary.) _____

No allowable will be assigned to the well until all interests have been consolidated (by communitization, unitization, forced-pooling, or otherwise) or until a non-standard unit, eliminating such interests, has been approved by the Commission.



CERTIFICATION

I hereby certify that the information contained herein is true and complete to the best of my knowledge and belief.

Vickie Teel
 Name
Vickie Teel
 Position
Production Clerk
 Company
Collier Energy, Inc.
 Date
Sept. 1, 1983

I hereby certify that the well location shown on this plat was plotted from field notes of actual surveys made by me or under my supervision, and that the same is true and correct to the best of my knowledge and belief.

Date Surveyed
AUGUST 30, 1983
 Registered Professional Engineer and Land Surveyor
John W. West

Certificate No. **JOHN W. WEST, 676**
RONALD J. EIDSON, 3239

