

DISTRIBUTION	
SANTA FE	✓
FILE	✓
U.S.G.S.	2
LAND OFFICE	✓
OPERATOR	1

RECEIVED BY

SEP 20 1983

O. C. D.

ARTESIA, OFFICE

5A. Indicate Type of Lease

STATE ☒FEL ☐

6. State Oil & Gas Lease No.

E-9261

APPLICATION FOR PERMIT TO DRILL, DEEPEN, OR PLUG BACK

1a. Type of Work DRILL <input checked="" type="checkbox"/> DEEPEN <input type="checkbox"/> PLUG BACK <input type="checkbox"/>		7. Unit Agreement Name
b. Type of Well OIL WELL <input checked="" type="checkbox"/> GAS WELL <input type="checkbox"/> OTHER <input type="checkbox"/> SINGLE ZONE <input type="checkbox"/> MULTIPLE ZONE <input type="checkbox"/>		8. Farm or Lease Name Ohio State
2. Name of Operator Santa Rita Exploration, Corp. ✓		9. Well No. #1
3. Address of Operator P.O. Box 798, Artesia, New Mexico 88210		10. Field and Pool, or Wildcat Artesia O GR SA
4. Location of Well UNIT LETTER L LOCATED 1650 FEET FROM THE South LINE AND 990 FEET FROM THE West LINE OF SEC. 16 TWP. 18S RGE. 28E NMPM		12. County Eddy
19. Proposed Depth 2850'		19A. Formation San Andres
21A. Kind & Status Plug. Bond Statewide		20. Rotary or C.T. Rotary
21. Elevations (Show whether DF, RT, etc.) 3615'		22. Approx. Date Work will start Sept. 20, 1983
21B. Drilling Contractor Collier Drilling		

23. PROPOSED CASING AND CEMENT PROGRAM

SIZE OF HOLE	SIZE OF CASING	WEIGHT PER FOOT	SETTING DEPTH	SACKS OF CEMENT	EST. TOP
12 1/4	8 5/8	23#	350'	300 sxs	
7 7/8	5 1/2	15.5#	2850'	600 sxs	

Plan to spud Artesia San Andres well on September 20, 1983 with 12 1/4" bit. Set 350' of 8 5/8" surface 23# with 300 sxs. Class "C" neat. Drill out with 7 7/8" bit with 10# brine to proposed depth of 2850'. If commercial shows are present, 5 1/2, 15.5# casing will be set with 600 sxs Class "C" neat and circulate to surface. If dry hole proper plugs will be set as prescribed by NM OCD.

APPROVAL VALID FOR 180 DAYS
PERMIT EXPIRES 3-22-84
UNLESS DRILLING UNDERWAY

BOP:

Rig 10 - 10" Manual 3000# Shaffer

Rig 12 - 10" 5000# SS Cameron Series 1500 - with Koomey 2 stage accumulator

Post ID-1
9-23-83
M. Lee - API

IN ABOVE SPACE DESCRIBE PROPOSED PROGRAM: IF PROPOSAL IS TO DEEPEN OR PLUG BACK, GIVE DATA ON PRESENT PRODUCTIVE ZONE AND PROPOSED NEW PRODUCTIVE ZONE. GIVE BLOWOUT PREVENTER PROGRAM, IF ANY.

I hereby certify that the information above is true and complete to the best of my knowledge and belief.

Signed Walter Hall Title Production Clerk Date Sept. 20, 1983

(This space for State Use)

APPROVED BY M. Lee TITLE OIL AND GAS INSPECTOR DATE SEP 22 1983

CONDITIONS OF APPROVAL, IF ANY:

OIL CONSERVATION DIVISION

STATE OF NEW MEXICO
ENERGY AND MINERALS DEPARTMENTP. O. BOX 2088
SANTA FE, NEW MEXICO 87501Form C-102
Revised 10-1-78

All distances must be from the outer boundaries of the Section.

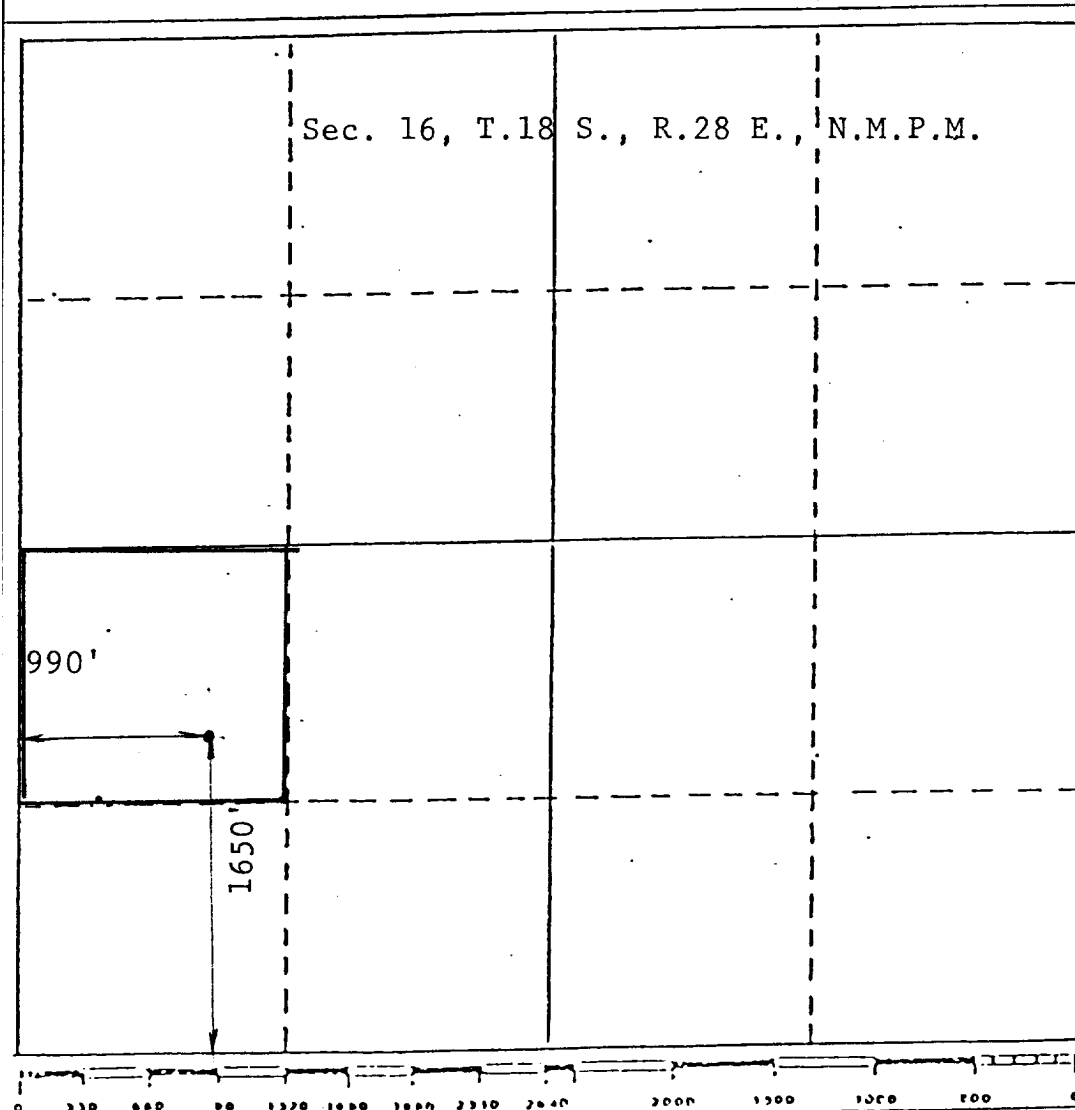
Operator Santa Rita Exploration		Lease Ohio State		Well No. 1
Unit Letter L	Section 16	Township 18 South	Range 28 East	County Eddy
Actual Footage Location of Well: 1650 feet from the South line and 990 feet from the West line				
Ground Level Elev. 3615	Producing Formation San Andres	Pool Artesia Q GR SA	Dedicated Acreage: 40 Acres	

1. Outline the acreage dedicated to the subject well by colored pencil or hatchure marks on the plat below.
2. If more than one lease is dedicated to the well, outline each and identify the ownership thereof (both as to working interest and royalty).
3. If more than one lease of different ownership is dedicated to the well, have the interests of all owners been consolidated by communitization, unitization, force-pooling, etc?

☐ Yes ☐ No If answer is "yes," type of consolidation _____

If answer is "no," list the owners and tract descriptions which have actually been consolidated. (Use reverse side of this form if necessary.) _____

No allowable will be assigned to the well until all interests have been consolidated (by communitization, unitization, forced-pooling, or otherwise) or until a non-standard unit, eliminating such interests, has been approved by the Division.



CERTIFICATION

I hereby certify that the information contained herein is true and complete to the best of my knowledge and belief.

Name

Vickie Teel

Position

Production Clerk

Company

Collier Energy, Inc.

Date

Sept. 20, 1983

I hereby certify that the well location shown on this plat was plotted from field notes of actual surveys made by me or under my supervision, and that the same is true and correct to the best of my knowledge and belief.

Date Surveyed

Sept. 19, 1983

Registered Professional Engineer
and/or Land Surveyor

John D. Jaquess, P.E. & L.S.

Certificate No.

6290