

NO. OF COPIES RECEIVED	
DISTRIBUTION	
SANTA FE	✓
FILE	✓
U.S.G.S.	✓
LAND OFFICE	✓
OPERATOR	✓

P. O. BOX 2088  
SANTA FE, NEW MEXICO 87501

OCT 03 1983

O. C. D.  
ARTESIA, OFFICEForm C-101  
Revised 10-1-78

5A. Indicate Type of Lease

STATE ☐FEE ☒

5. State Oil &amp; Gas Lease No.

## APPLICATION FOR PERMIT TO DRILL, DEEPEN, OR PLUG BACK

4. Type of Work

DRILL ☒DEEPEN ☐PLUG BACK ☐

5. Type of Well

OIL

WELL ☒

GAS

WELL ☐

OTHER

SINGLE

ZONE ☐

MULTIPLE

ZONE ☐

6. Name of Operator

Yates Petroleum Corporation ✓

7. Address of Operator

207 S. 4th, Artesia, New Mexico 88210

8. Location of Well

UNIT LETTER N

LOCATED 430

FEET FROM THE South

LINE

9. NO. 2260

FEET FROM THE West

LINE OF SEC. 26

TWP. 18S

RGE. 26E

NADON

7. Unit Agreement Name

8. Farm or Lease Name

Platt "PA"

9. Well No.

8

10. Field and Pool or Wildcat

Und. Atoka Yeso

12. County

Eddy

11. Elevations (Show whether DF, RT, etc.)

3310' GL

21A. Kind &amp; Status Plug. Bond

Blanket

19. Proposed Depth

3800'

19A. Formation

Yeso

20. Rotary or C.T.

Rotary

21B. Drilling Contractor

not determined

22. Approx. Date Work will start

ASAP

## PROPOSED CASING AND CEMENT PROGRAM

SIZE OF HOLE	SIZE OF CASING	WEIGHT PER FOOT	SETTING DEPTH	SACKS OF CEMENT	EST. TOP
9 1/2"	7"	20#	925'	600 sx	circulated
6 1/4"	4 1/2"	10.5#	TD	350 sx	circulated

Propose to drill and test the Yeso and intermediate formations. Casing will be set at least 100' below the Artesian Water Zone and 4 1/2" production string will be set at TD, all casing circulated to the surface. Will perforate and stimulate as needed for production.

MUD PROGRAM: FW gel to 925', fresh water to TD.

BOP PROGRAM: BOP's will be installed on the 7" casing & tested.

APPROVAL VALID FOR 180 DAYS  
PERMIT EXPIRES 4-6-84  
UNLESS DRILLING UNDERWAY

ABOVE SPACE DESCRIBE PROPOSED PROGRAM; IF PROPOSAL IS TO DEEPEN OR PLUG BACK, GIVE DATA ON PRESENT PRODUCTIVE ZONE AND PROPOSED NEW PRODUCTION ZONE. GIVE BLOWOUT PREVENTER PROGRAM, IF ANY.

I hereby certify that the information above is true and complete to the best of my knowledge and belief.

Signed Law Beardsley Title Regulatory Agent Date 10/3/83

(This space for State Use)

APPROVED BY Mark Walker TITLE OIL AND GAS INSPECTOR

DATE OCT 6 1983

CONDITIONS OF APPROVAL, IF ANY:

Notify N.M.O.C.C. in sufficient  
time to witness cementing  
the 7 casing

NEW MEXICO OIL CONSERVATION COMMISSION  
WELL LOCATION AND ACREAGE DEDICATION PLAT

Form C-102  
Supersedes C-128  
Effective 1-1-65

All distances must be from the outer boundaries of the Section.

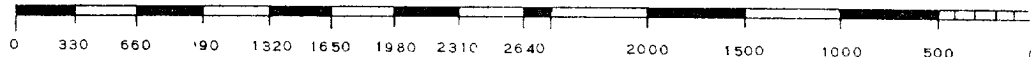
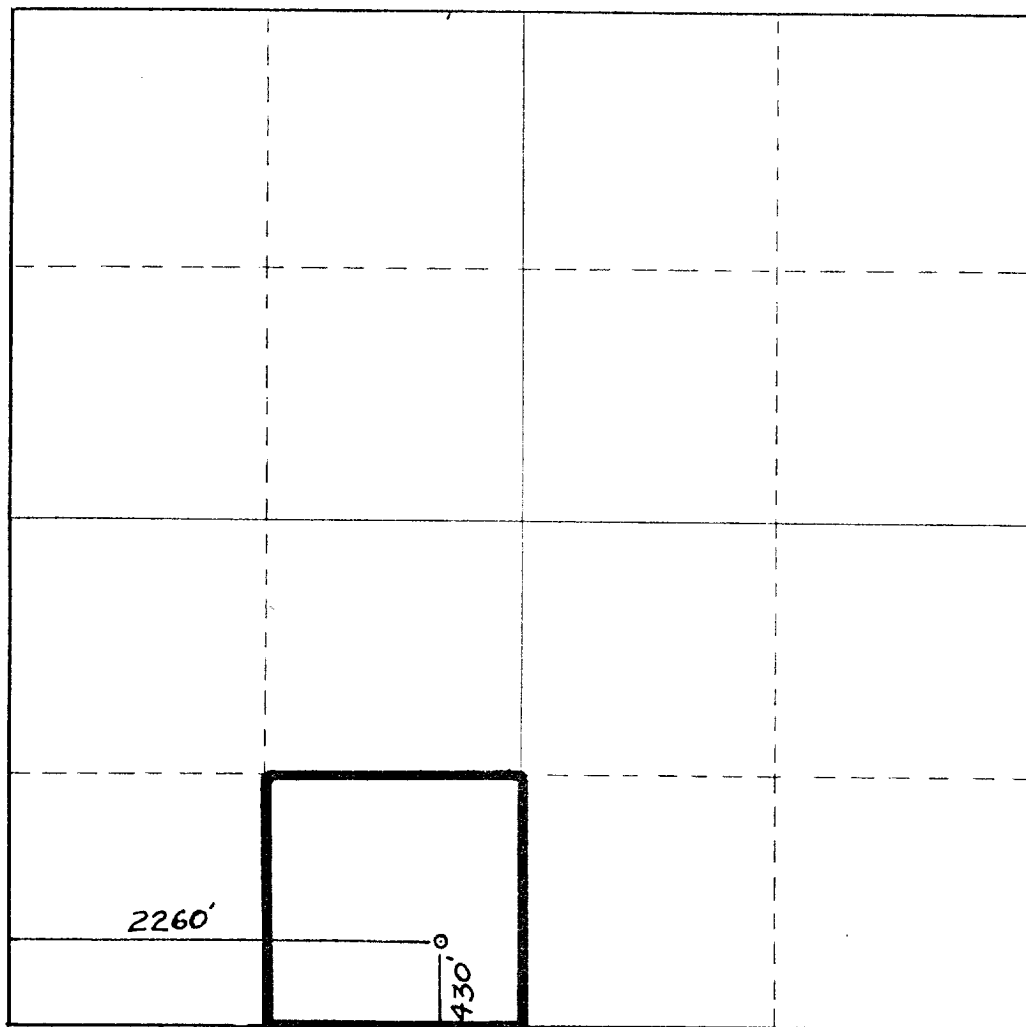
Operator <b>YATES PETROLEUM CORPORATION</b>			Lease <b>Platt PA</b>		Well No. <b>8</b>
Unit Letter <b>N</b>	Section <b>26</b>	Township <b>18 South</b>	Range <b>26 East</b>	County <b>Eddy</b>	
Actual Footage Location of Well: <b>430</b> feet from the <b>South</b> line and <b>2260</b> feet from the <b>West</b> line					
Ground Level Elev. <b>3310.</b>	Producing Formation <b>Yeso</b>		Pool <b>Undes. Atoka Yeso</b>		Dedicated Acreage: <b>40</b> Acres

1. Outline the acreage dedicated to the subject well by colored pencil or hachure marks on the plat below.
2. If more than one lease is dedicated to the well, outline each and identify the ownership thereof (both as to working interest and royalty).
3. If more than one lease of different ownership is dedicated to the well, have the interests of all owners been consolidated by communitization, unitization, force-pooling, etc?

☐ Yes ☐ No If answer is "yes," type of consolidation \_\_\_\_\_

If answer is "no," list the owners and tract descriptions which have actually been consolidated. (Use reverse side of this form if necessary.) \_\_\_\_\_

No allowable will be assigned to the well until all interests have been consolidated (by communitization, unitization, forced-pooling, or otherwise) or until a non-standard unit, eliminating such interests, has been approved by the Commission.



CERTIFICATION

I hereby certify that the information contained herein is true and complete to the best of my knowledge and belief.

*Ken Beardemph*

Name  
**Ken Beardemph**

Position  
**Regulatory Agent**

Company  
**Yates Petroleum Corp.**

Date  
**10/3/83**

I hereby certify that the well location shown on this plat was plotted from field notes of actual surveys made by me or under my supervision, and that the same is true and correct to the best of my knowledge and belief.

*Dan R. Reddy*

Date Surveyed  
**October 2, 1983**

Registered Professional Engineer and/or Land Surveyor

*Dan R. Reddy*

Certificate No.  
**NM PE&LS #5412**

# EXHIBIT B

## BOP DIAGRAM

RATED 3000<sup>#</sup>

