

DISTRIBUTION		
SANTA FE	✓	
FILE	✓	✓
U.S.G.S.	2	
LAND OFFICE	✓	
OPERATOR	✓	

NEW MEXICO OIL CONSERVATION COMMISSION

RECEIVED BY

OCT 06 1983

O. C. D.  
ARTESIA, OFFICE

Form C-101 30-015-24621  
Revised 1-1-65

5A. Indicate Type of Lease

STATE ☒ FEDERAL ☐

5. State Oil &amp; Gas Lease No.

## APPLICATION FOR PERMIT TO DRILL, DEEPEN, OR PLUG BACK

1A. Type of Work b. Type of Well OIL WELL <input checked="" type="checkbox"/> GAS WELL <input type="checkbox"/> OTHER <input type="checkbox"/> SINGLE ZONE <input type="checkbox"/> MULTIPLE ZONE <input type="checkbox"/>				7. Unit Agreement Name	
2. Name of Operator Santa Rita Exploration Corp. ✓				8. Farm or Lease Name Superior State	
3. Address of Operator P.O. Box 798, Artesia, New Mexico 88210				9. Well No. Superior State #1	
4. Location of Well UNIT LETTER D LOCATED 990 FEET FROM THE North LINE AND 990 FEET FROM THE West LINE OF SEC. 24 TWP. 18S RGE. 27E NMPM				10. Field and Pool, or Wildcat Artesia Q GR SA	
				12. County Eddy	
				19. Proposed Depth 2800'	
				19A. Formation San Andres	
				20. Rotary or C.T. Rotary	
21. Elevations (show whether DF, RT, etc.) 3576.0		21A. Kind & Status Plug. Bond Statewide		21B. Drilling Contractor Collier Drilling, Inc.	
				22. Approx. Date Work will start October 20, 1983	

23.

## PROPOSED CASING AND CEMENT PROGRAM

SIZE OF HOLE	SIZE OF CASING	WEIGHT PER FOOT	SETTING DEPTH	SACKS OF CEMENT	EST. TOP
12 1/4	8 5/8"	24#	300-350	300 sxs	surface
7 7/8	5 1/2"	15.5#	2800	600 sxs	surface

Plan to spud an Artesia San Andres well on Oct. 20, 1983 with 12 1/4" bit. Set 300-350' of 8 5/8" surface 24# with 300 sxs Class "C" neat. Drill out with 7 7/8" bit with 10# brine to proposed depth of 2800'. If commercial shows are present 5 1/2", 15.5# casing will be set with 600 sxs Class "C" neat & circulate to surface. If dry hole proper plugs will be set as prescribed by NM OCD.

APPROVAL VALID FOR 180 DAYS  
PERMIT EXPIRES 4-7-84  
UNLESS DRILLING UNDERWAY

BOP:

Rig 10 - 10" Manual 3000# Shaffer

Rig 12 - 10" 5000# SS Cameron Series 1500 - with Koomey 2 stage accumulator

Post ID-1  
10-14-83  
APR 10 1984

IN ABOVE SPACE DESCRIBE PROPOSED PROGRAM: IF PROPOSAL IS TO DEEPEN OR PLUG BACK, GIVE DATA ON PRESENT PRODUCTIVE ZONE AND PROPOSED NEW PRODUCTIVE ZONE. GIVE BLOWOUT PREVENTER PROGRAM, IF ANY.

I hereby certify that the information above is true and complete to the best of my knowledge and belief.

Signed Vickie J. Jelf Title Production Clerk Date Oct. 4, 1983

(This space for State Use)

APPROVED BY W. H. Walker TITLE OIL AND GAS INSPECTOR DATE OCT 7 1983

CONDITIONS OF APPROVAL, IF ANY:

**N MEXICO OIL CONSERVATION COMMISS**  
**WELL LOCATION AND ACREAGE DEDICATION PLAT**

Form C-102  
 Supersedes C-128  
 Effective 14-85

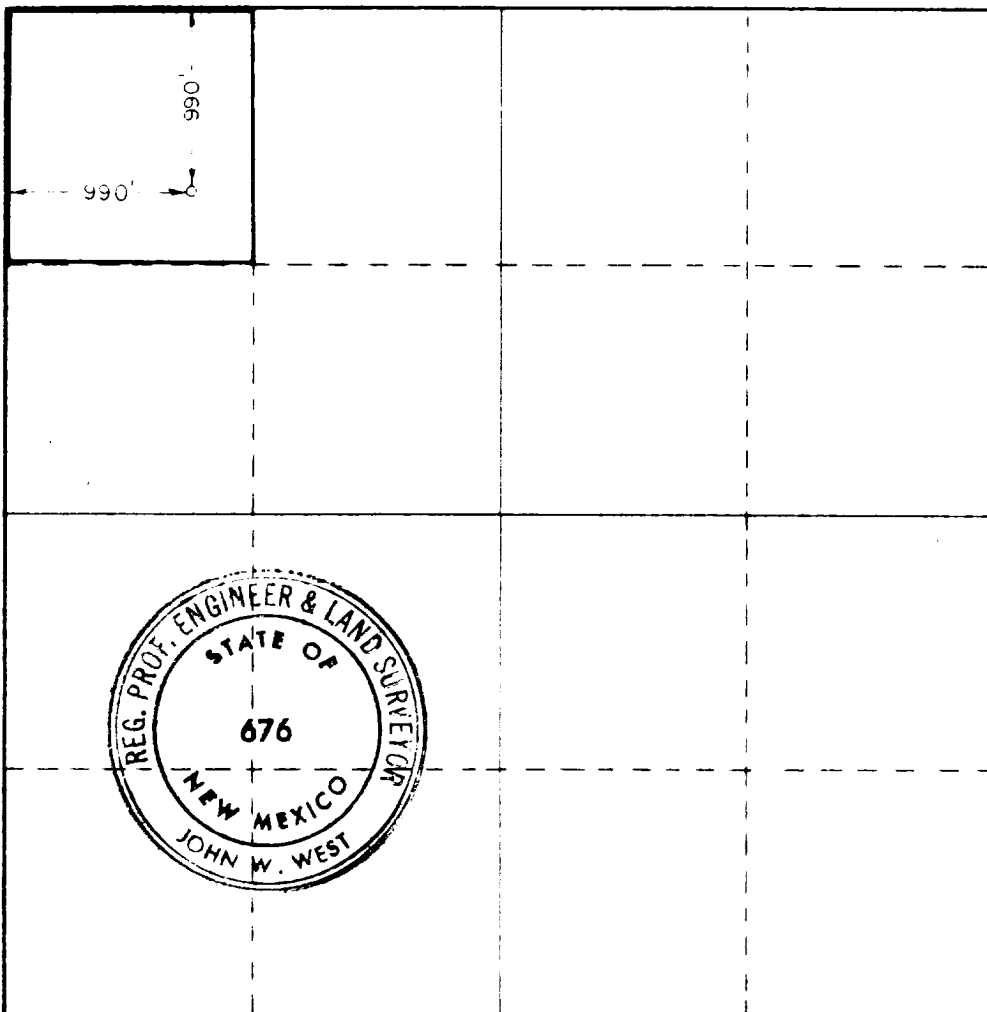
All distances must be from the outer boundaries of the Section

Operator <b>SANTA RITA EXPLORATION CORP.</b>			Lease <b>SUPERIOR STATE</b>		Well No. <b>1</b>
Tract Letter <b>D</b>	Section <b>24</b>	Township <b>18 SOUTH</b>	Range <b>27 EAST</b>	County <b>EDDY</b>	
Actual Footage Location of Well:					
<b>990</b> feet from the <b>NORTH</b> line and		<b>990</b> feet from the <b>WEST</b> line			
Ground Level Elev. <b>3576.0</b>	Producing Formation <b>San Andres</b>	Pool <b>Artesia Q GR SA</b>	Dedicated Acreage: <b>40</b> Acres		

- Outline the acreage dedicated to the subject well by colored pencil or hachure marks on the plat below.
- If more than one lease is dedicated to the well, outline each and identify the ownership thereof (both as to working interest and royalty).
- If more than one lease of different ownership is dedicated to the well, have the interests of all owners been consolidated by communitization, unitization, force-pooling, etc?  
☐ Yes   ☐ No   If answer is "yes," type of consolidation \_\_\_\_\_

If answer is "no," list the owners and tract descriptions which have actually been consolidated. (Use reverse side of this form if necessary.) \_\_\_\_\_

No allowable will be assigned to the well until all interests have been consolidated (by communitization, unitization, forced-pooling, or otherwise) or until a non-standard unit, eliminating such interests, has been approved by the Commission.



**CERTIFICATION**

I hereby certify that the information contained herein is true and complete to the best of my knowledge and belief

*Vickie Teel*

Name

**Vickie Teel**

Position

**Production Clerk**

Company

**Collier Energy, Inc.**

Date

**Oct. 4, 1983**

I hereby certify that the well location shown on this plat was plotted from field notes of actual surveys made by me or under my supervision, and that the same is true and correct to the best of my knowledge and belief.

Date Surveyed

**SEPTEMBER 29, 1983**

Registered Professional Engineer  
 and/or Land Surveyor

*John W. West*

Certificate No. **JOHN W. WEST,**

**676**

**RONALD J. EIDSON,**

**3239**

